

STANDARD ARRIVAL CHART-
INSTRUMENT (STAR)-ICAO

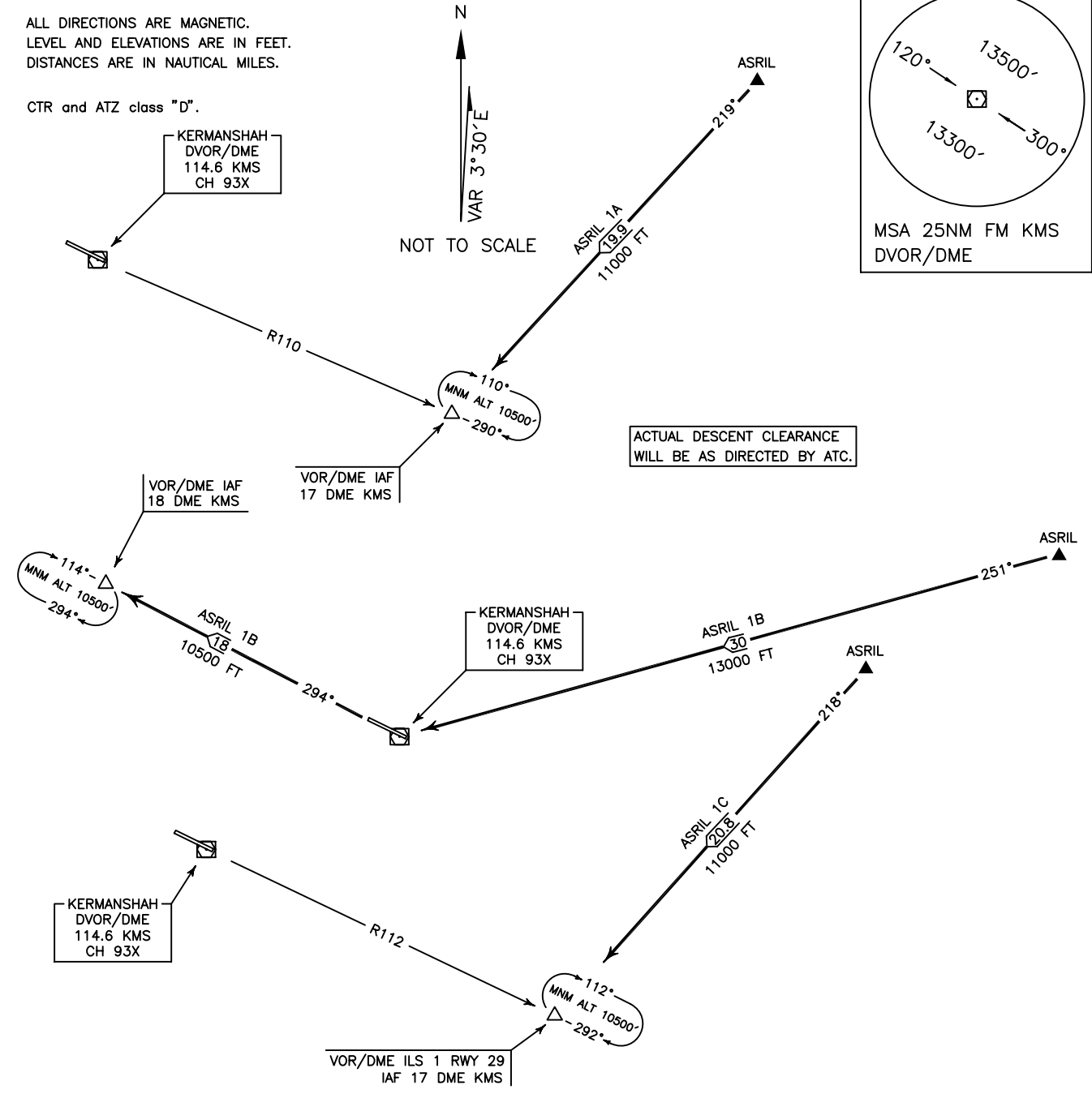
TRANSITION ALTITUDE
13000 FT

TWR 122.450
121.900
ATIS 126.800

KERMANSHAH/
SHAHID ASHRAFI ESFAHANI
RWY 11/29
ASRIL 1A/1B/1C

ALL DIRECTIONS ARE MAGNETIC.
LEVEL AND ELEVATIONS ARE IN FEET.
DISTANCES ARE IN NAUTICAL MILES.

CTR and ATZ class "D".



ASRIL 1A ARR:

FM ASRIL proceed to VOR/DME RWY 29 IAF (RDL 110-17 DME), MAG TR 219°, DIST 19.9 NM, MNM ALT 11000 FT.

ASRIL 1B ARR:

FM ASRIL proceed to VOR/DME RWY 11 IAF (RDL 294-18 DME) via overhead KMS DVOR/DME, MAG TR 251, DIST 30 NM, MNM ALT 13000 FT, then MAG TR 294° to IAF, DIST 18 NM, MNM ALT 10500 FT.

ASRIL 1C ARR:

FM ASRIL proceed to VOR/DME ILS 1 RWY 29 IAF (RDL 112-17 DME), MAG TR 218°, DIST 20.8 NM, MNM ALT 11000 FT.