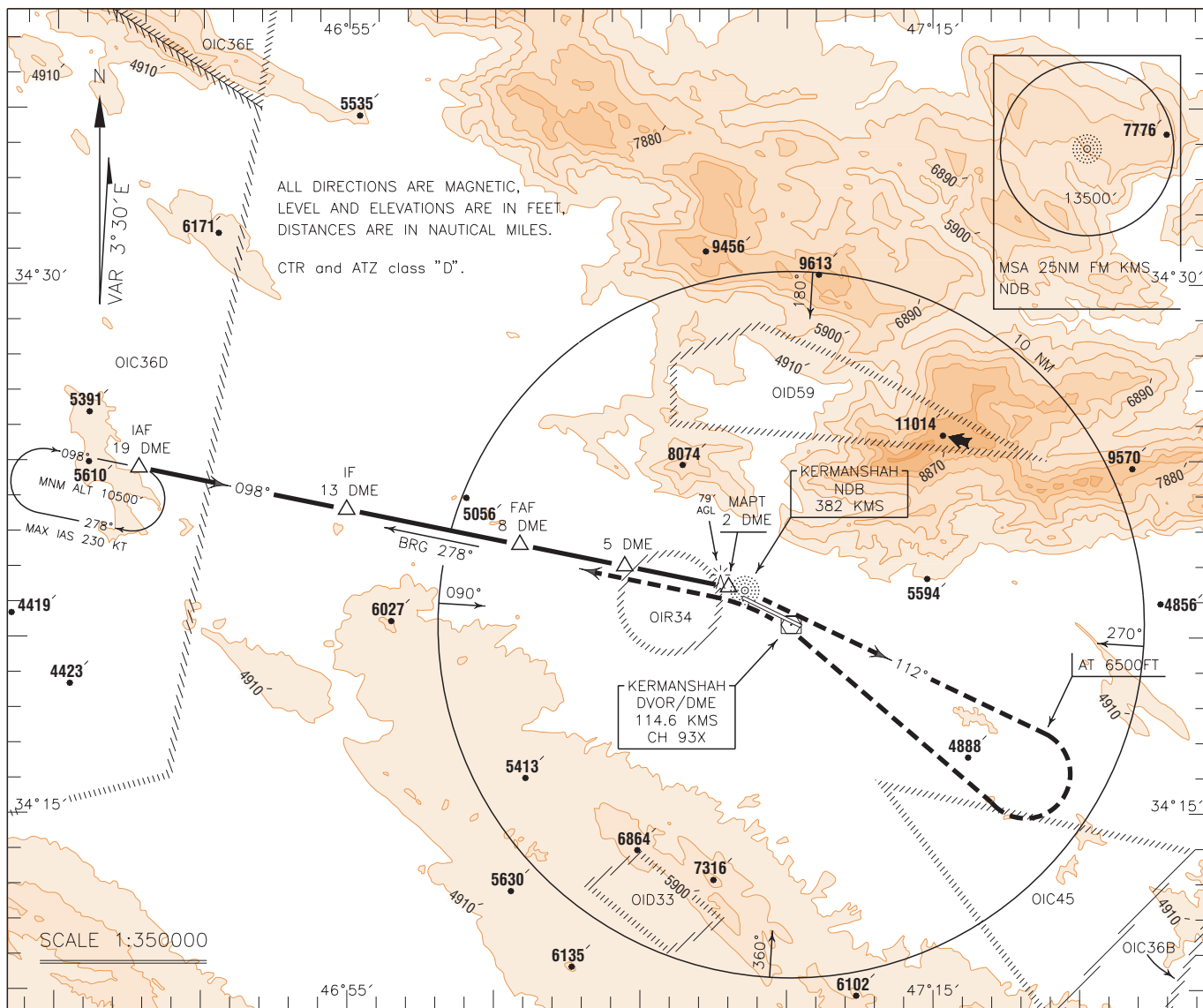


INSTRUMENT
APPROACH
CHART-ICAO

AERODROME ELEV. 4301 FT
HEIGHTS RELATED TO
AERODROME ELEVATION

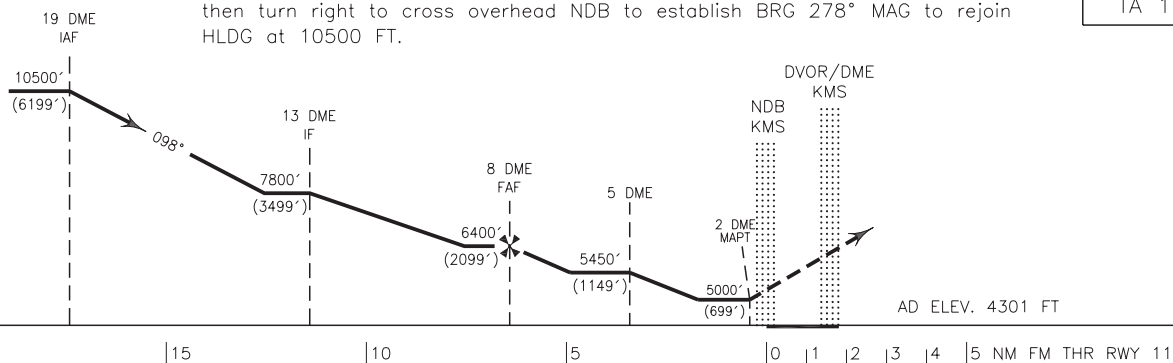
TWR 122.450
121.900
ATIS 126.800

KERMANSHAH/
SHAHID ASHRAFI ESFAHANI
NDB/DME RWY 11
CAT A/B/C/D



MISSED APPROACH: At 2 DME climb to overhead NDB, then climb on BRG 112° MAG to 6500 FT, then turn right to cross overhead NDB to establish BRG 278° MAG to rejoin HLDG at 10500 FT.

TA 13000'



NOTE:
1-Circle to land not authorized BTN BRG 315° and BRG 100° clockwise.
2-Contour intervals are to be selected at 990 FT (300 M).

OCA(H)	A	B	C	D
Straight	5000' (699')			
Circling	5100' (799')	5200' (899')	5400' (1099')	5580' (1279')