

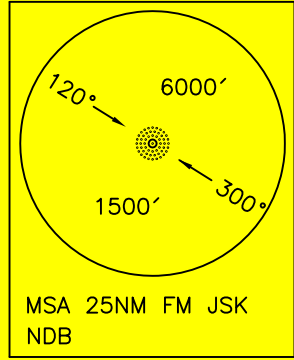
STANDARD ARRIVAL CHART-
INSTRUMENT (STAR)-ICAO

TRANSITION ALTITUDE
4000 FT

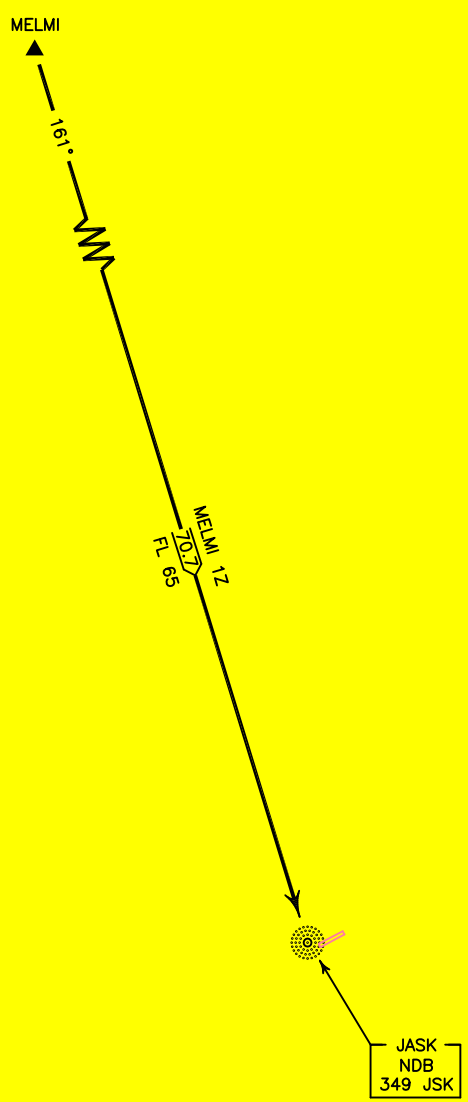
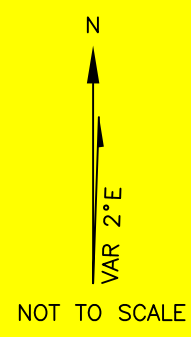
JASK
RWY 06/24
MELMI 1Z

ALL DIRECTIONS ARE MAGNETIC,
LEVEL AND ELEVATIONS ARE IN FEET,
DISTANCES ARE IN NAUTICAL MILES.

military ATZ.



ACTUAL DESCENT CLEARANCE
WILL BE AS DIRECTED BY ATC.



MELMI 1Z ARR:
FM MELMI proceed to JSK NDB, MAG TR 161°, DIST 70.7 NM, MNM FL 65.
Note: This procedure penetrate within C43.