

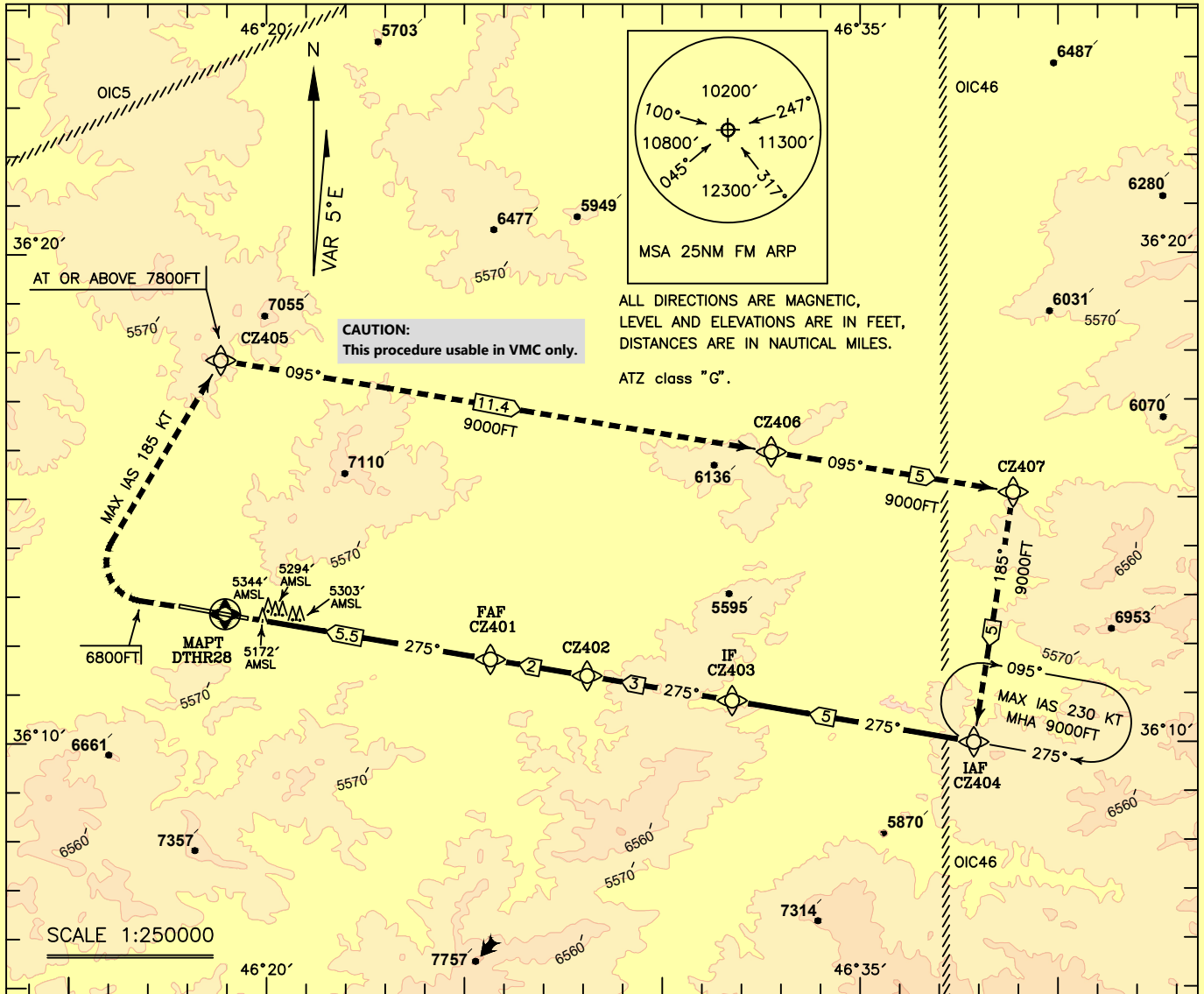


INSTRUMENT  
APPROACH  
CHART-ICAO

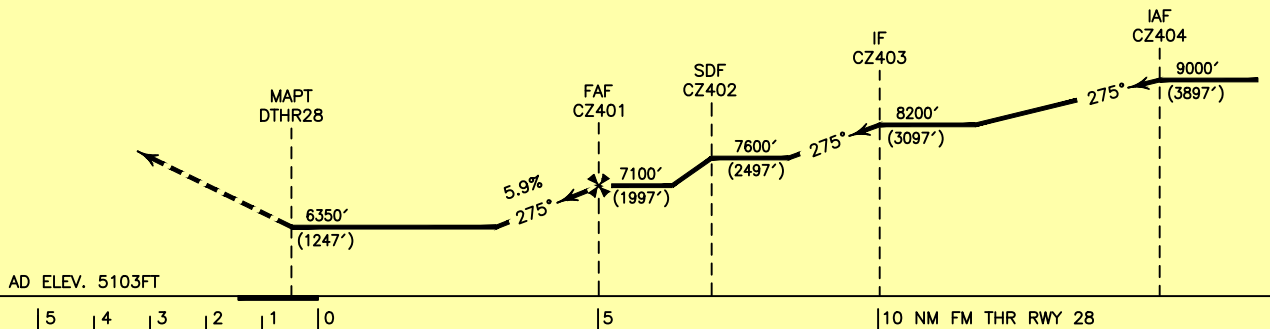
AERODROME ELEV. 5103 FT  
HEIGHTS RELATED TO  
AERODROME ELEVATION

INFO 124.350

SAQEZ  
RNP RWY 28  
CAT A/B/C



**MISSED APPROACH:** At DTHR28 climb on MAG TR 275° to 6800 FT, then turn right direct to CZ405, at TA 11000' or above 7800 FT (MAX IAS 185Kt), then to IAF via CZ406 and CZ407 and climb to 9000 FT to rejoin HLDG.



**NOTE:**

-Contour intervals are to be selected at 990 FT.

OCA(H)	A	B	C
LNAV/VNAV			
LNAV	6350' (1247')		

CODING INFORMATION FOR RNP RWY 28 OICZ												
Serial Number	Path Descriptor	Waypoint Identifier	Coordinates	Fly-over	Course/Track °M(°T)	Magnetic Variation	Distance (NM)	Turn Direction	Altitude (FT)	Speed (kt)	VPA / TCH (FT)	Navigation Specification
001	IF	CZ404	361001.01N 0463747.93E	-	-	5.2E	-	-	+9000	230	-	RNP APCH
002	TF	CZ403	361052.45N 0463142.83E	-	275 (279.83)	5.2E	5	-	8200	-	-	RNP APCH
003	TF	CZ402	361123.17N 0462803.69E	-	275 (279.83)	5.2E	3	-	7600	-	-	RNP APCH
004	TF	CZ401	361143.59N 0462537.58E	-	275 (279.83)	5.2E	2	-	7100	-	-	RNP APCH
005	TF	DTHR28	361239.318N 0461856.493E	Y	275 (279.83)	5.2E	5.5	-	+6350	-	-	RNP APCH
006	CA			-	275 (279.83)	5.2E	-	-	+6800		-	RNP APCH
007	DF	CZ405	361750.29N 0461855.26E	-	-	5.2E	-	R	+7800	185	-	RNP APCH
008	TF	CZ406	361548.498N 0463246.16E	-	095 (100.19)	5.2E	11.4	-	9000	-	-	RNP APCH
009	TF	CZ407	361454.47N 0463851.09E	-	095 (100.32)	5.2E	5	R	9000	-	-	RNP APCH
010	TF	CZ404	361001.01N 0463747.93E	-	185 (189.89)	5.2E	5	-	9000	-	-	RNP APCH
011	HM	CZ404	361001.01N 0463747.93E	-	275 (279.83)	5.2E	-	R	+9000	230	-	RNP APCH