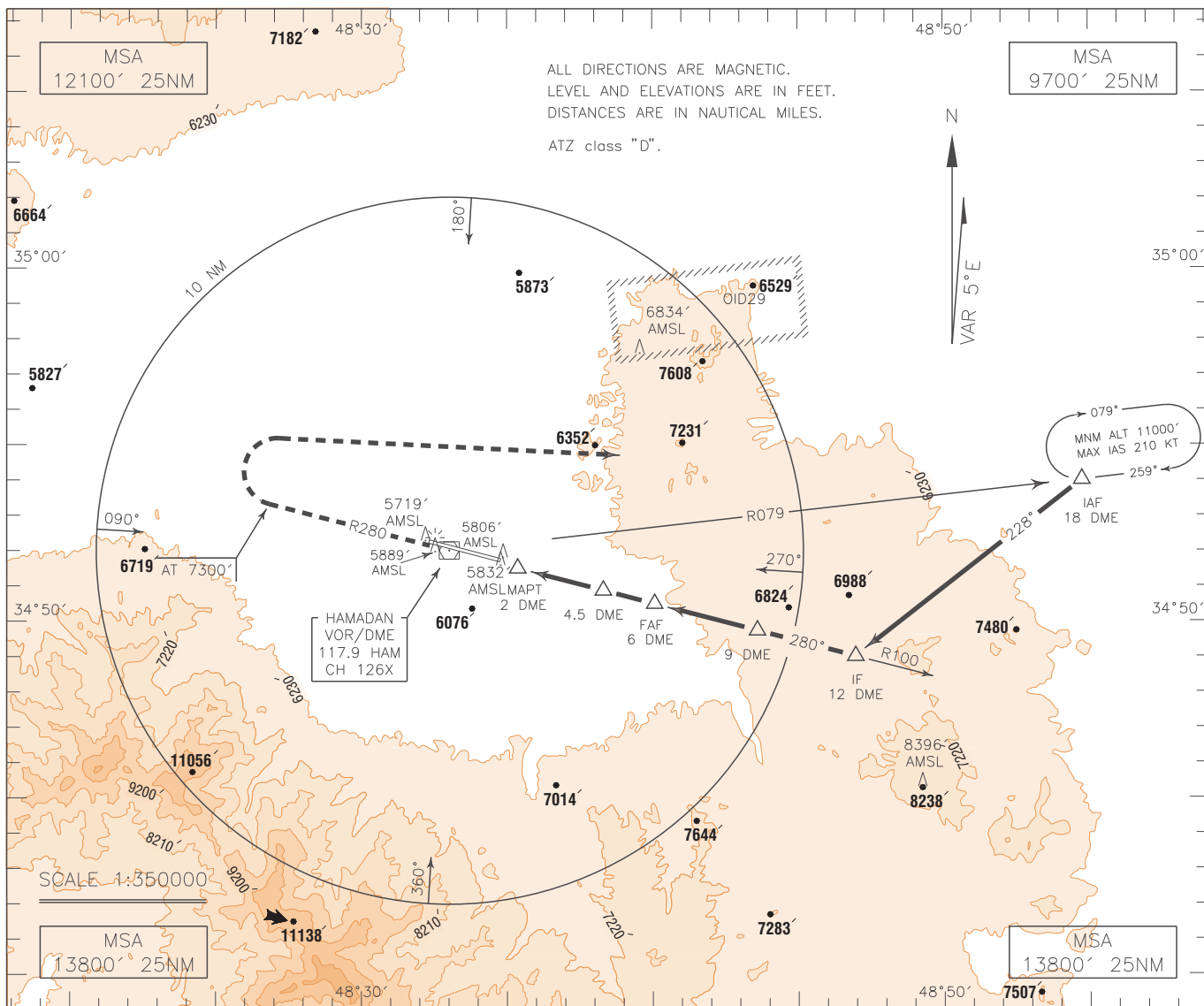


INSTRUMENT
APPROACH
CHART-ICAO

AERODROME ELEV 5771 FT
HEIGHTS RELATED TO
AERODROME ELEVATION

TWR 123.500
121.900

HAMADAN
VOR/DME RWY 28
CAT A/B/C/D



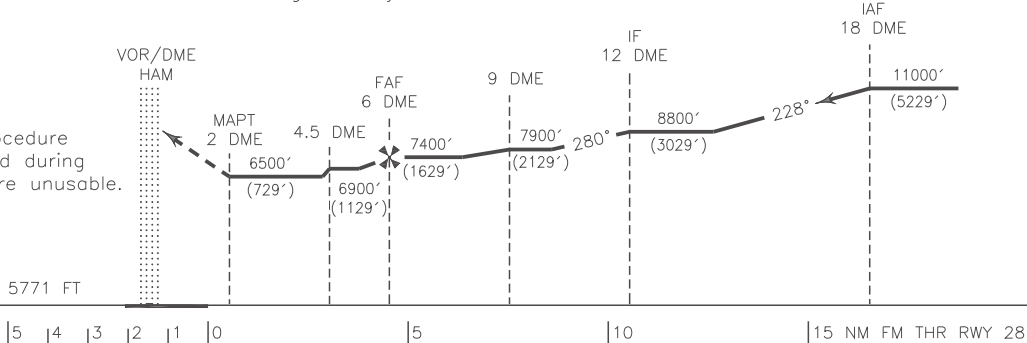
MISSED APPROACH: At 2 DME climb on MAG TR 280° to overhead VOR/DME, then climb on RDL 280 to 7300 FT, then turn right to rejoin HLDG at 11000 FT.

TA 13000'

NOTE:

Missed approach procedure penetrates OID29 and during activity this procedure unusable.

AD ELEV. 5771 FT



NOTE:

- 1-This procedure lies within OIR32.
- 2-Holding area penetrates with OID29
- 3-Contour intervals are to be selected at 990 FT (300 M).

OCA(H)	A	B	C	D
Straight	6500' (729')			
Circling	6710' (939')	7540' (1769')	7850' (2079')	