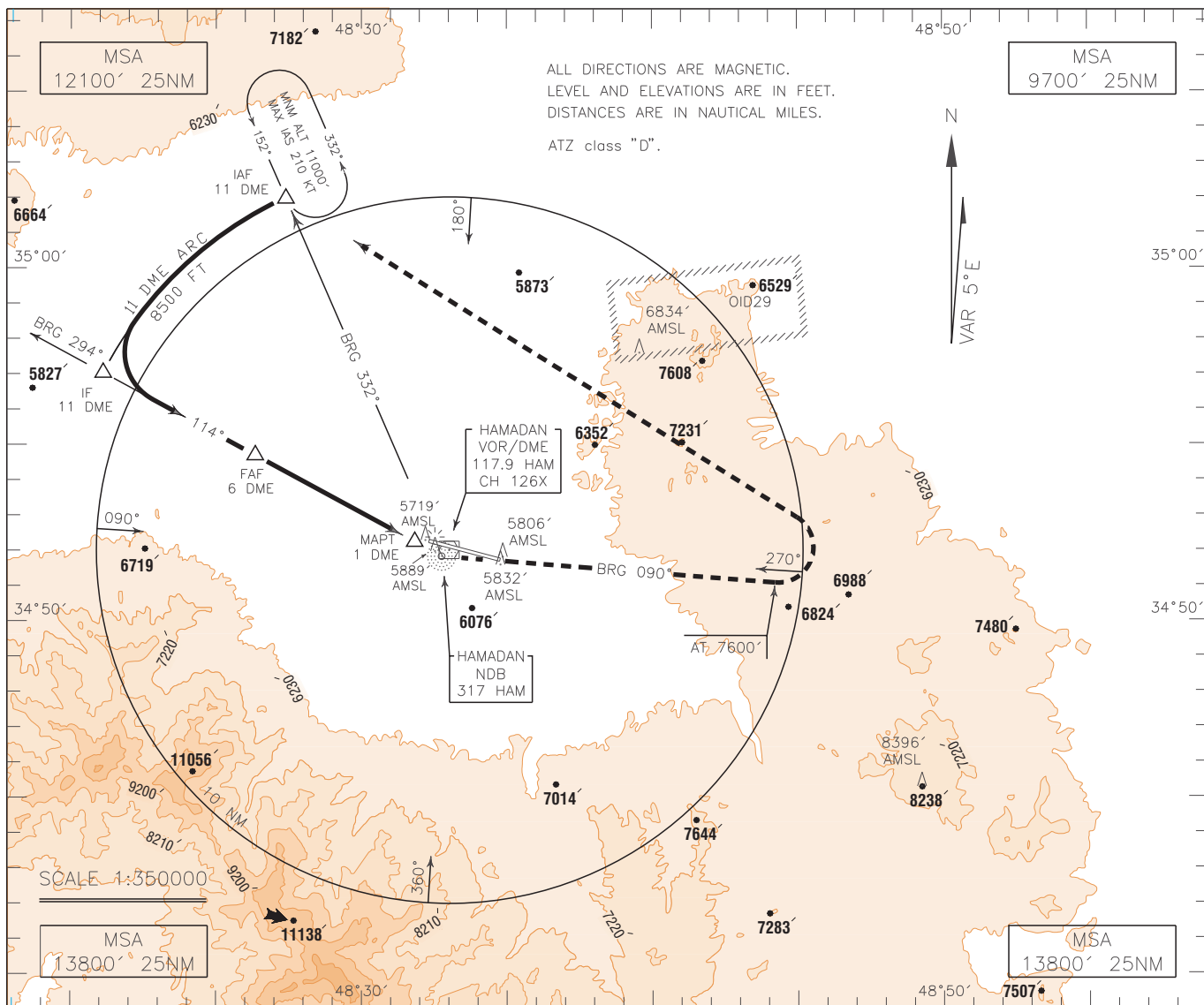


INSTRUMENT
APPROACH
CHART-ICAO

AERODROME ELEV 5771 FT
HEIGHTS RELATED TO
THR RWY 10 ELEV. 5703 FT

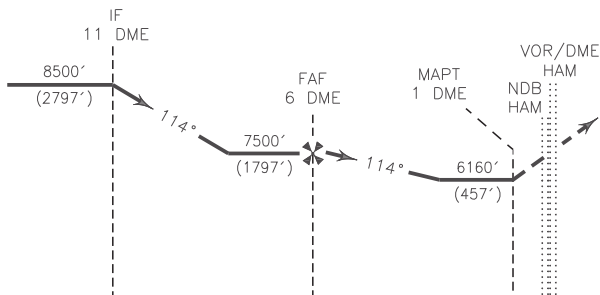
TWR 123.500
121.900

HAMADAN
NDB/DME RWY 10
CAT A/B/C/D



MISSED APPROACH: At 1 DME climb on MAG TR 114° to overhead NDB, then turn left climb on BRG 090° to 7600 FT, then turn left to rejoin HLDG at 11000 FT.

TA 13000'



NOTE:
Missed approach procedure penetrates OID29 and during activity this procedure unusable.

THR RWY 10 ELEV. 5703 FT

15 | 10 | 5 | 0 | 1 | 2 | 3 | 4 | 5 NM FM THR RWY 10

NOTE:

- 1-This procedure lies within OIR32.
- 2-Holding area penetrates with OID29
- 3-Contour intervals are to be selected at 990 FT (300 M).

OCA(H)	A	B	C	D
Straight	6160'(457')			
Circling	6710'(939')	7540'(1769')	7850'(2079')	