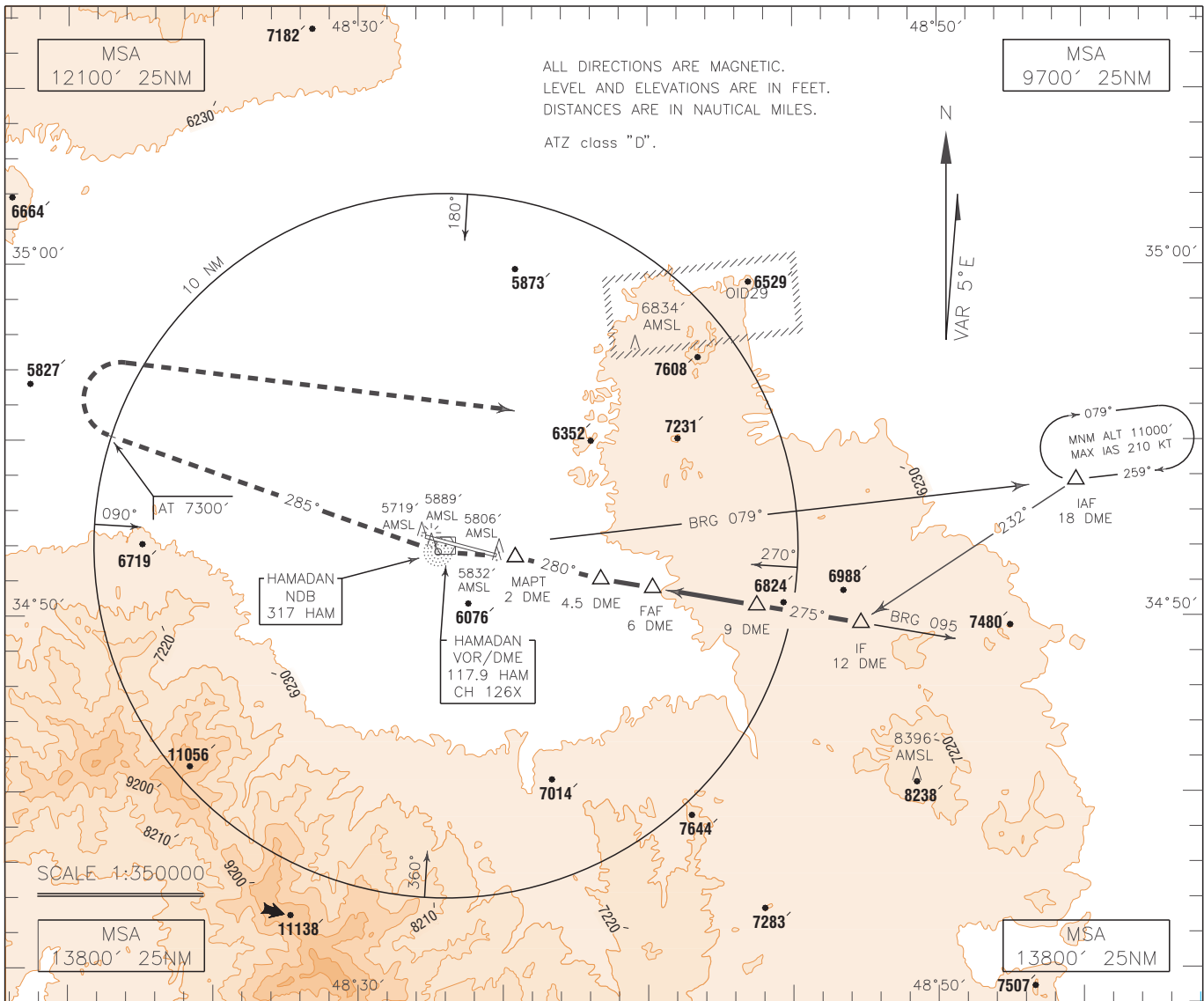


INSTRUMENT
APPROACH
CHART-ICAO

AERODROME ELEV 5771 FT
HEIGHTS RELATED TO
AERODROME ELEVATION

TWR 123.500
121.900

HAMADAN
CIRCLING NDB/DME
CAT A/B

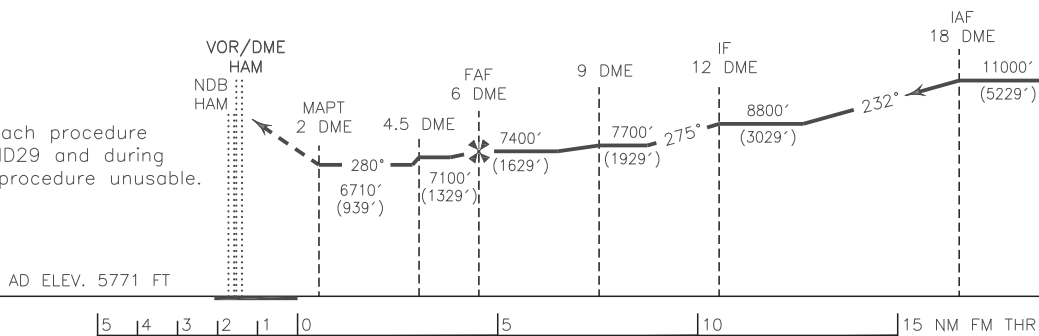


MISSED APPROACH: At 2 DME climb to overhead NDB, then turn right climb on BRG 285° to 7300 FT, then turn right to rejoin HLDG at 11000 FT.

TA 13000'

NOTE:

Missed approach procedure penetrates OI29 and during activity this procedure unusable.



NOTE:

- 1—This procedure lies within OIR32.
- 2—Holding area penetrates with OI29
- 3—Contour intervals are to be selected at 990 FT (300 M).

OCA(H)	A	B	C	D
Straight				
Circling	6710' (939')			