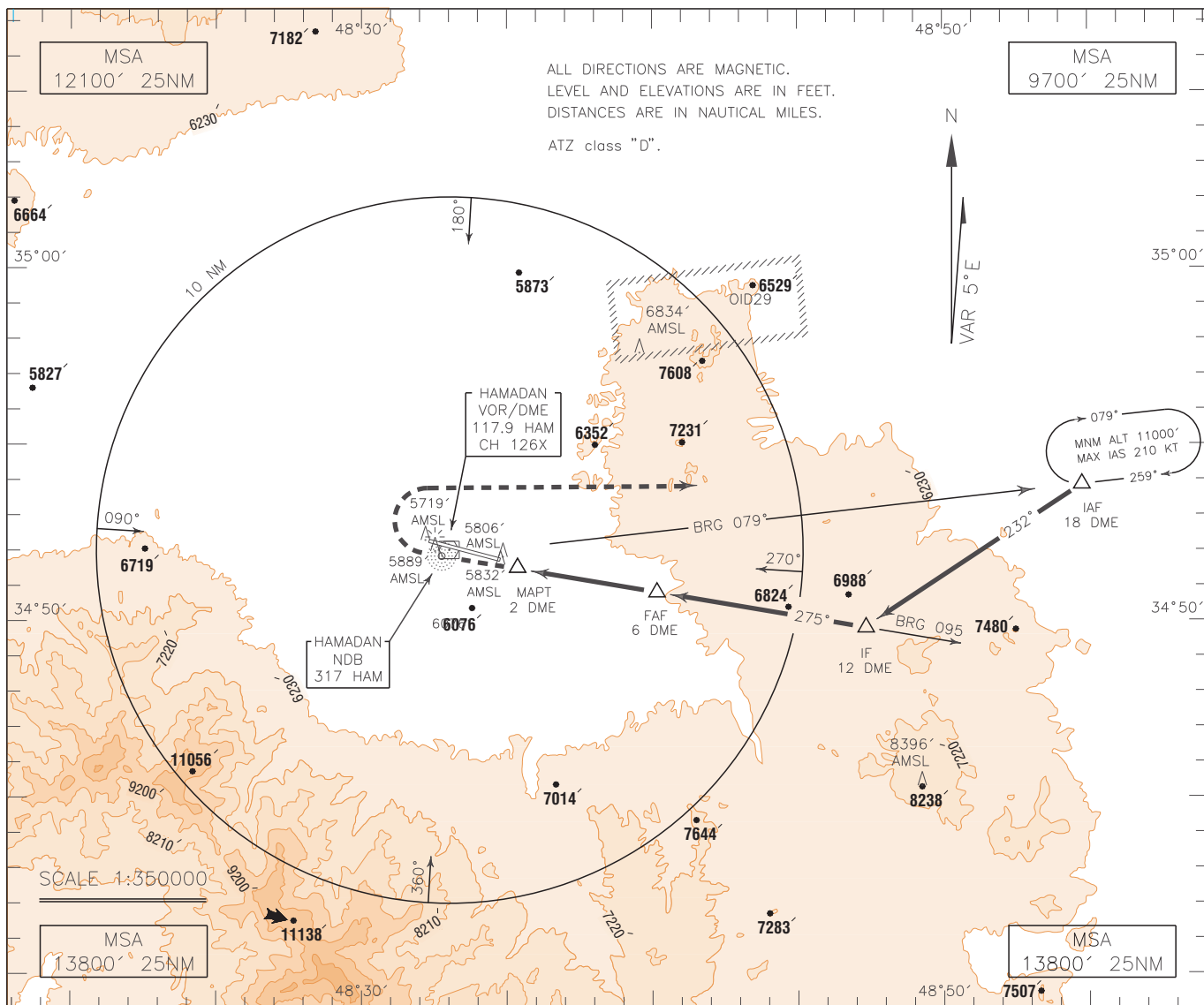


INSTRUMENT  
APPROACH  
CHART-ICAO

AERODROME ELEV 5771 FT  
HEIGHTS RELATED TO  
AERODROME ELEVATION

TWR 123.500  
121.900

HAMADAN  
CIRCLING NDB/DME  
CAT C/D



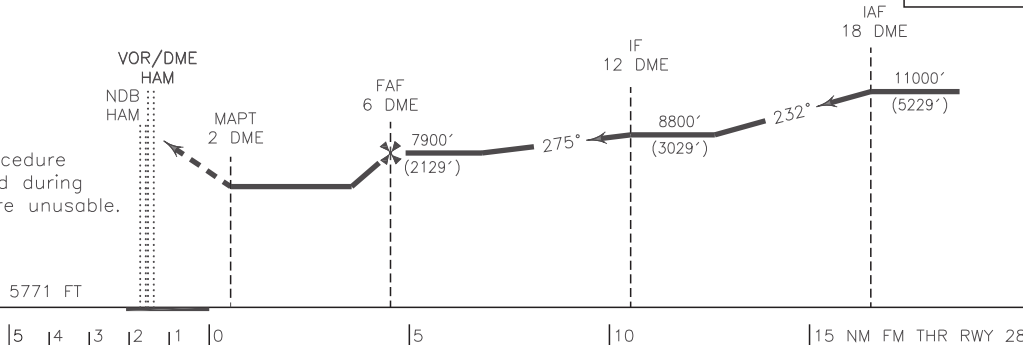
MISSED APPROACH: At 2 DME climb on MAG TR 275° to overhead NDB, then turn right to rejoin  
HLDG at 11000 FT.

TA 13000'

NOTE:

Missed approach procedure penetrates OID29 and during activity this procedure unusable.

AD ELEV. 5771 FT



NOTE:

- 1-This procedure lies within OIR32.
- 2-Holding area penetrates with OID29
- 3-Contour intervals are to be selected at 990 FT (300 M).

OCA(H)	A	B	C	D
Straight				
Circling			7540' (1769')	7850' (2079')