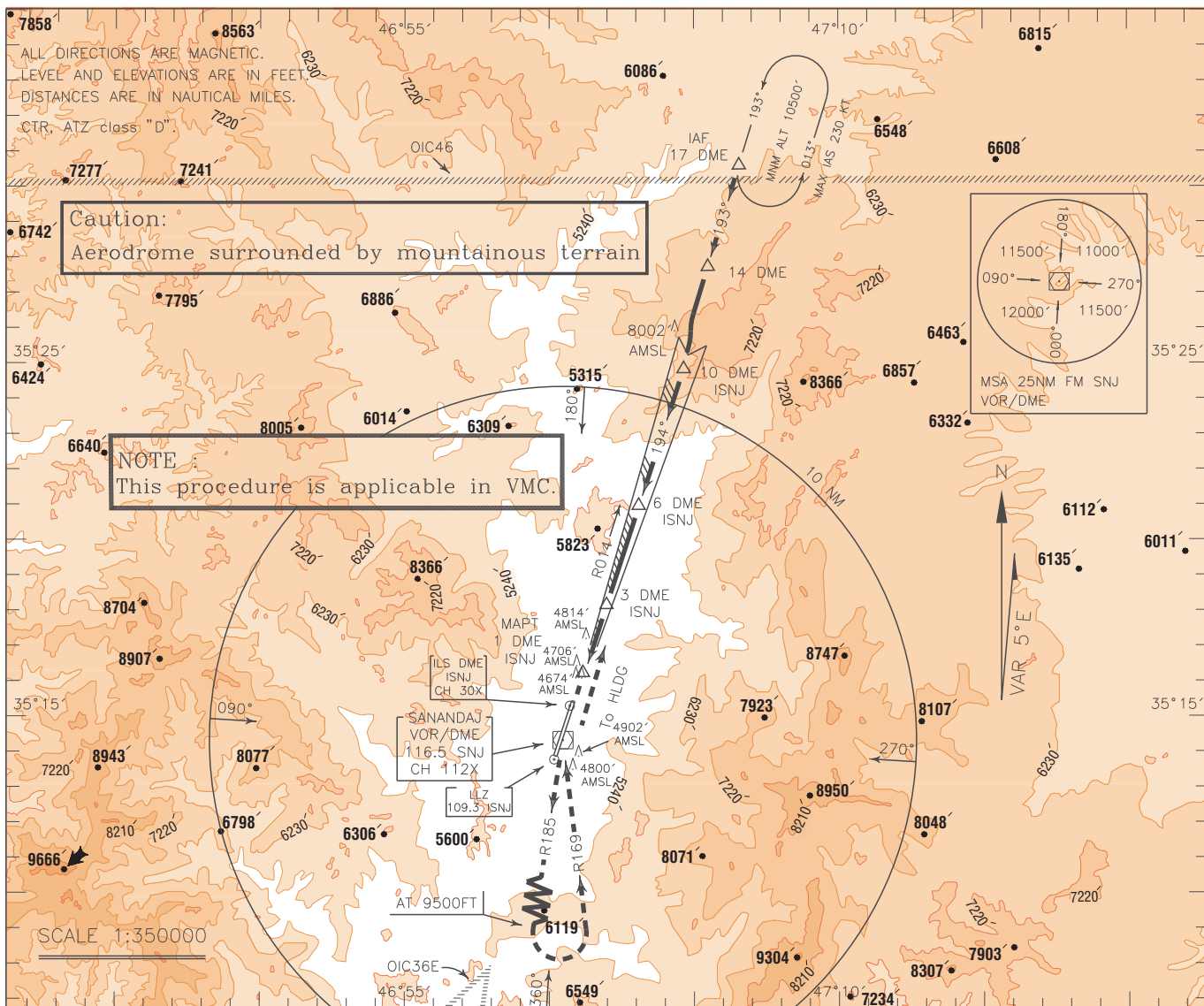


INSTRUMENT
APPROACH
CHART-ICAO

AERODROME ELEV. 4528 FT
HEIGHTS RELATED TO
THR RWY 19 ELEV. 4528 FT

TWR 122.900, 121.900
ATIS 128.450

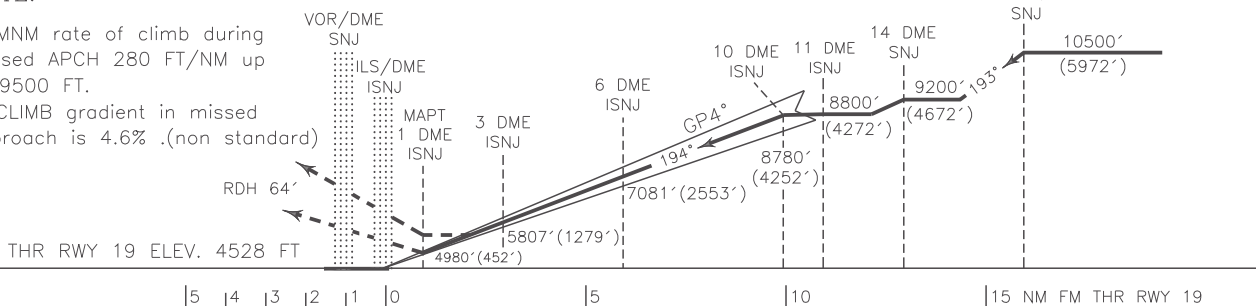
SANANDAJ
ILS RWY 19
CAT A/B/C



MISSED APPROACH: At 1 DME climb straight ahead to VOR/DME, then climb on RDL 185 to 9500 FT, then turn left to establish RDL 169 to overhead VOR/DME, then establish RDL 013 to rejoin HLDG at 10500 FT.

NOTE:

- 1-MNM rate of climb during missed APCH 280 FT/NM up to 9500 FT.
- 2-CLIMB gradient in missed approach is 4.6% (non standard)



NOTE:

- 1-Glide path angle is 4° (non standard).
- 2-Contour intervals are to be selected at 990 FT (300 M).

OCA(H)	A	B	C	D
Straight		4980' (452')		
GP INOP		5580' (1052')		
Circling	5960' (1432')	6860' (2332')	8120' (3592')	