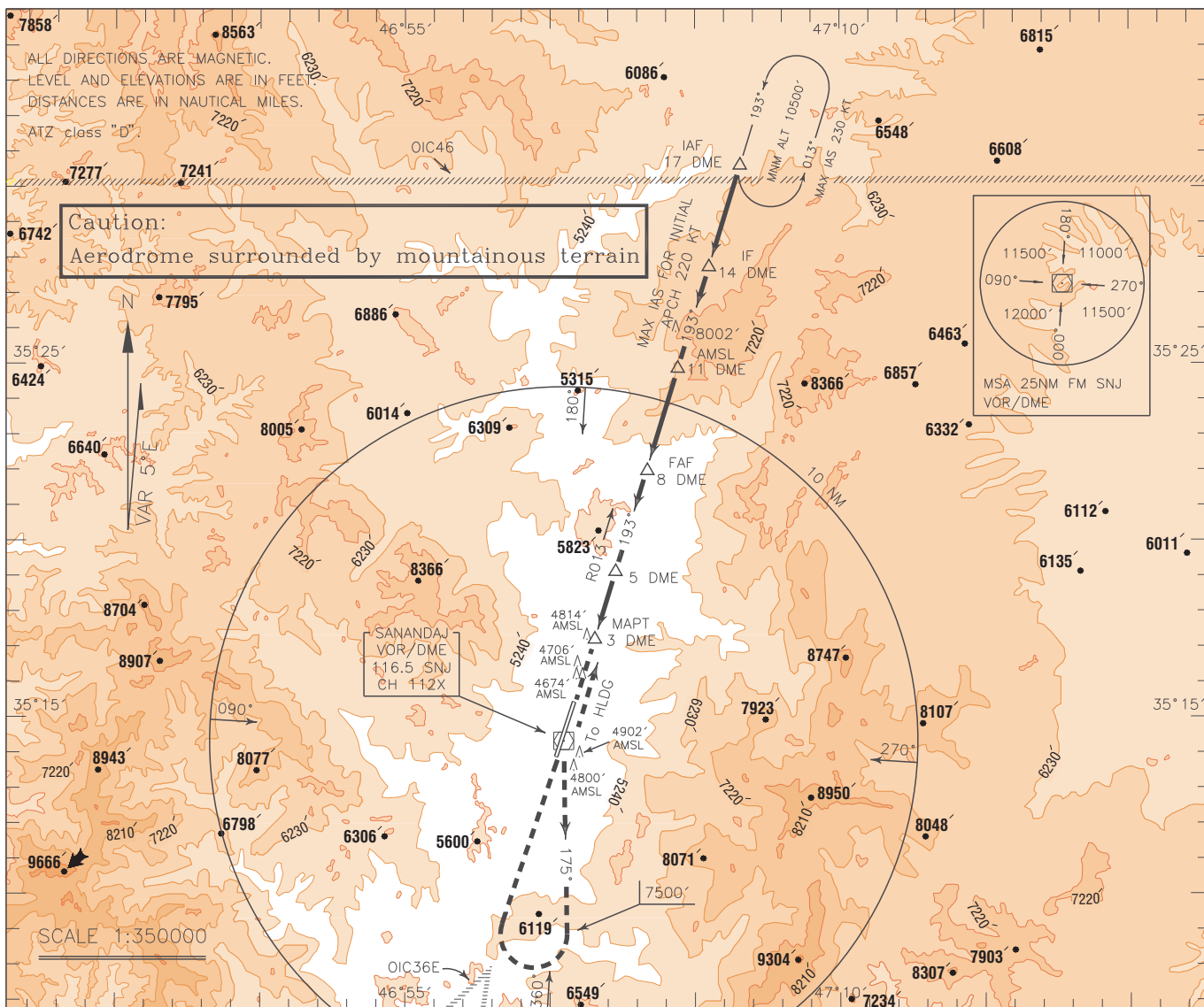


INSTRUMENT
APPROACH
CHART-ICAO

AERODROME ELEV. 4528 FT
HEIGHTS RELATED TO
AERODROME ELEVATION

TWR 122.900, 121.900
ATIS 128.450

SANANDAJ
VOR/DME RWY 19
CAT A/B/C/D



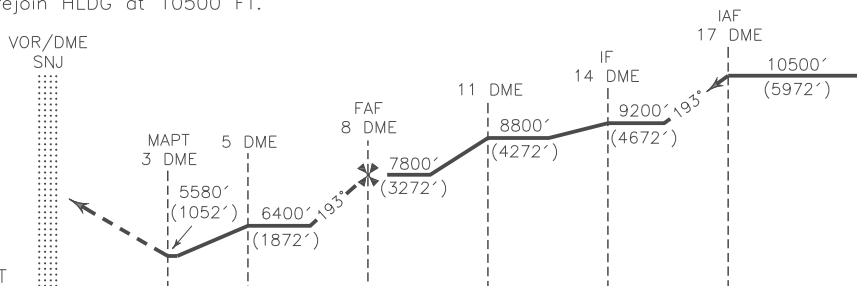
MISSED APPROACH: At 3 DME climb straight ahead to VOR/DME, then climb on TR 175° MAG to 7500 FT, then turn right to over VOR/DME and proceed on RDL 013 to rejoin HLDG at 10500 FT.

TA 11000'

NOTE:

MMN rate of climb during missed APCH 250 FT/NM.

AD ELEV. 4528 FT



5 4 3 2 1 0 5 10 15 NM FM THR RWY 19

NOTE :

- 1- Non standard descent gradient is required in intermediate and final approach segment.
- 2- Ceiling shall not be less than 2000 FT for executing this procedure.
- 3-Contour intervals are to be selected at 990 FT (300 M).

OCA(H)	A	B	C	D
Straight	5580' (1052')			
Circling	5960' (1432')	6860' (2332')	8120' (3592')	8760' (4232')