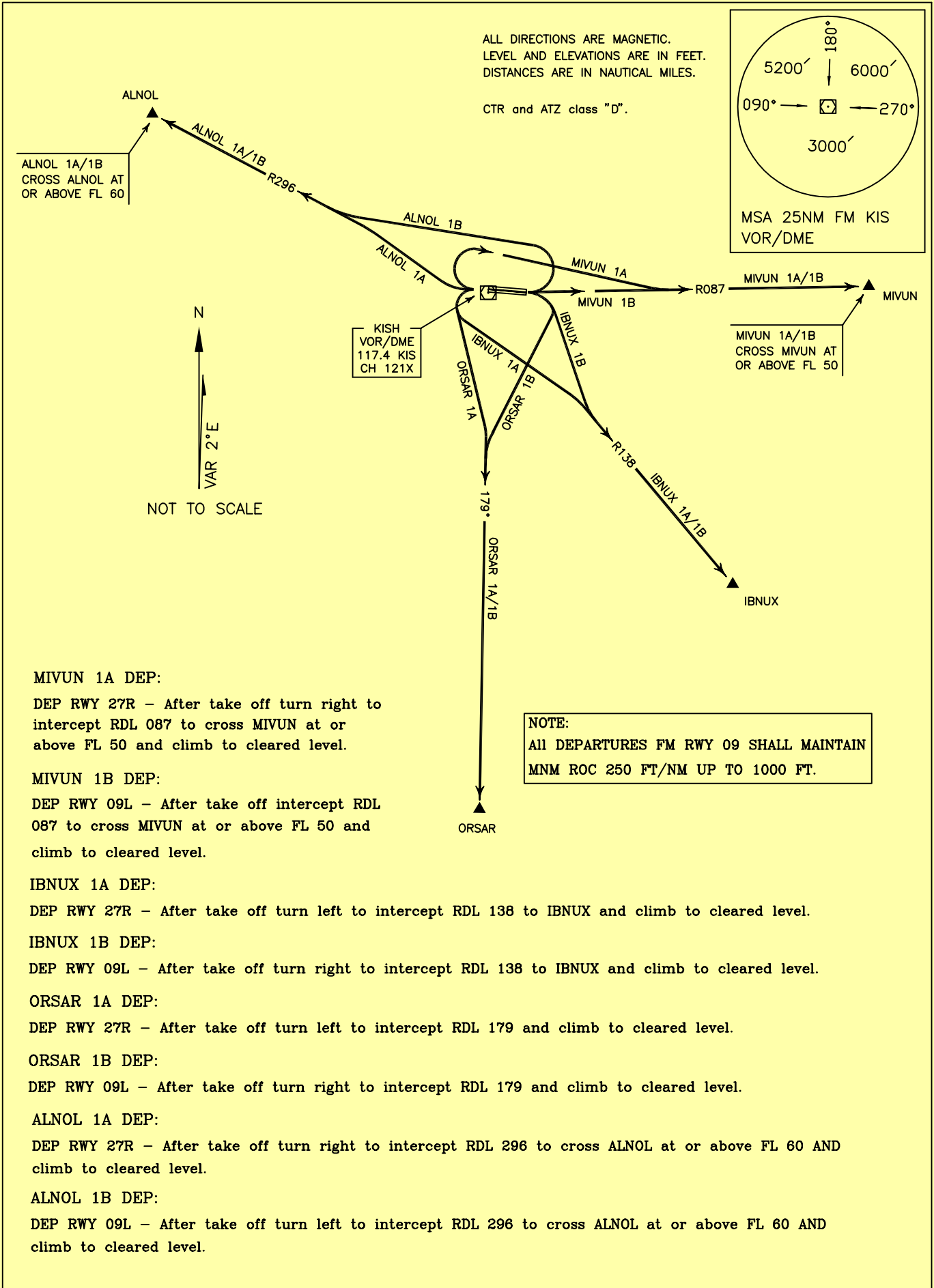


STANDARD DEPARTURE CHART-
INSTRUMENT (SID)-ICAO

TRANSITION ALTITUDE
3000 FT

TWR 118.450, 119.600
121.675
ATIS 128.000

KISH ISLAND/KISH
RWY 27R, 09L
MIVUN 1A/1B, IBNUX 1A/1B
ORSAR 1A/1B, ALNOL 1A/1B



MIVUN 1A DEP:

DEP RWY 27R - After take off turn right to intercept RDL 087 to cross MIVUN at or above FL 50 and climb to cleared level.

MIVUN 1B DEP:

DEP RWY 09L - After take off intercept RDL 087 to cross MIVUN at or above FL 50 and climb to cleared level.

IBNUX 1A DEP:

DEP RWY 27R - After take off turn left to intercept RDL 138 to IBNUX and climb to cleared level.

IBNUX 1B DEP:

DEP RWY 09L - After take off turn right to intercept RDL 138 to IBNUX and climb to cleared level.

ORSAR 1A DEP:

DEP RWY 27R - After take off turn left to intercept RDL 179 and climb to cleared level.

ORSAR 1B DEP:

DEP RWY 09L - After take off turn right to intercept RDL 179 and climb to cleared level.

ALNOL 1A DEP:

DEP RWY 27R - After take off turn right to intercept RDL 296 to cross ALNOL at or above FL 60 AND climb to cleared level.

ALNOL 1B DEP:

DEP RWY 09L - After take off turn left to intercept RDL 296 to cross ALNOL at or above FL 60 AND climb to cleared level.

STANDARD DEPARTURE CHART-
INSTRUMENT (SID)-ICAO

TRANSITION ALTITUDE
3000 FT

TWR 118.450, 119.600
121.675
ATIS 128.000

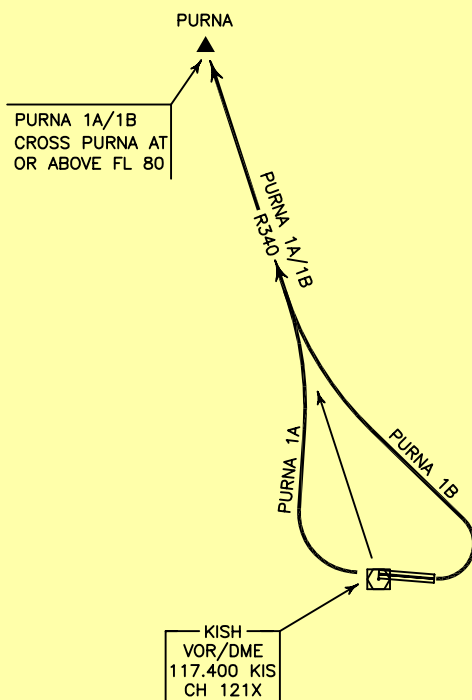
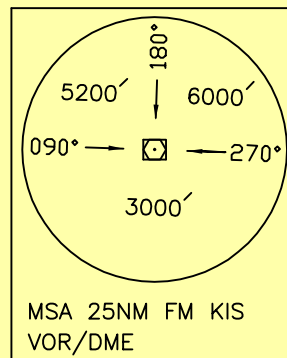
KISH ISLAND/KISH
RWY 27R, 09L
PURNA 1A/1B



NOT TO SCALE

ALL DIRECTIONS ARE MAGNETIC.
LEVEL AND ELEVATIONS ARE IN FEET.
DISTANCES ARE IN NAUTICAL MILES.

CTR and ATZ class "D".



NOTE:

ALL DEPARTURES FM RWY 09 SHALL MAINTAIN
MNM ROC 250 FT/NM UP TO 1000 FT.

PURNA 1A DEP:

DEP RWY 27R - After take off turn right to intercept RDL 340 to cross PURNA at or above FL 80 and climb to cleared level.

PURNA 1B DEP:

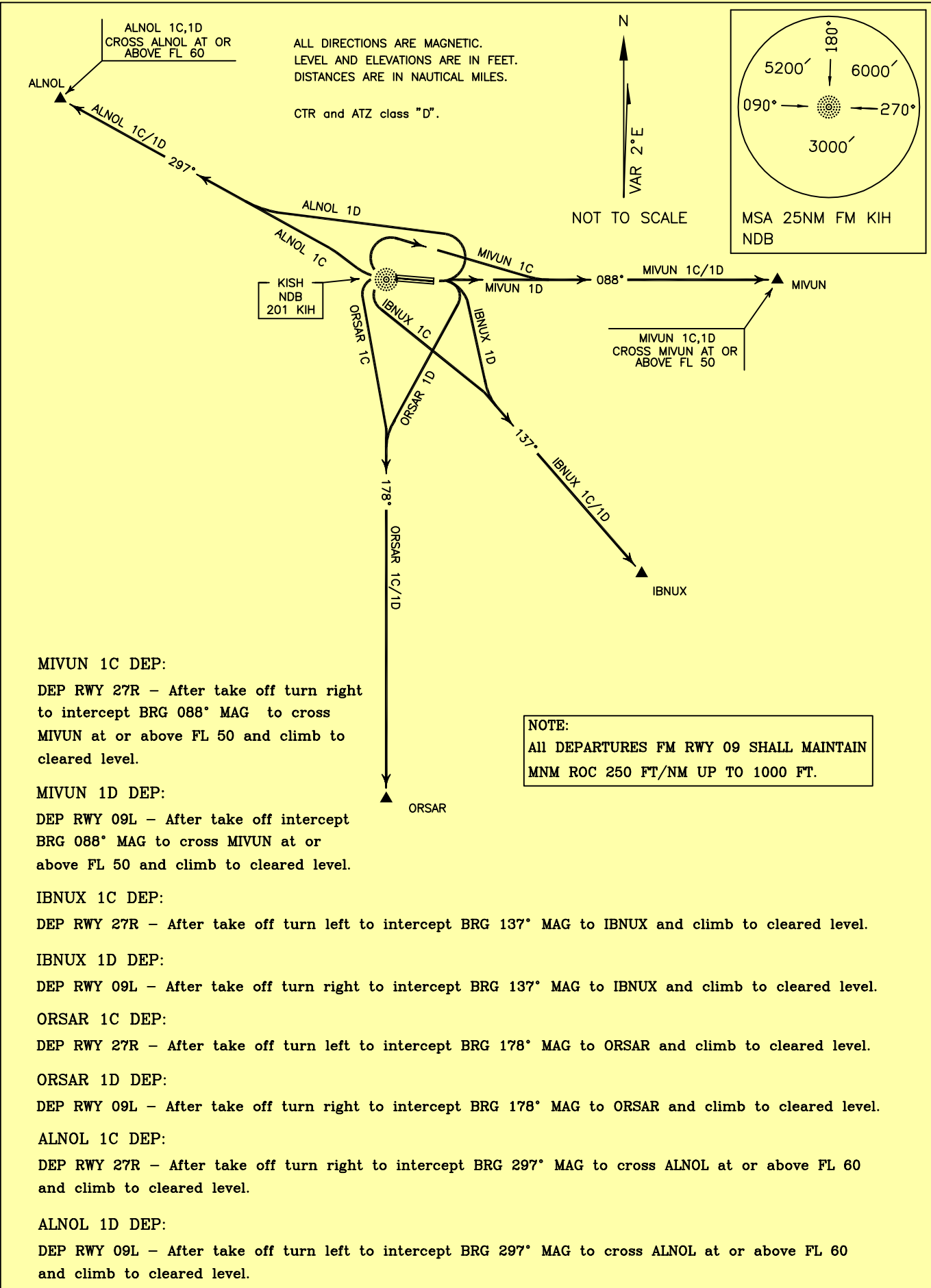
DEP RWY 09L - After take off turn left to intercept RDL 340 to cross PURNA at or above FL 80 and climb to cleared level.

STANDARD DEPARTURE CHART-
INSTRUMENT (SID)-ICAO

TRANSITION ALTITUDE
3000 FT

TWR 118.450, 119.600
121.675
ATIS 128.000

KISH ISLAND/KISH
RWY 27R, 09L
MIVUN 1C/1D, IBNUX 1C/1D
ORSAR 1C/1D, ALNOL 1C/1D



MIVUN 1C DEP:

DEP RWY 27R - After take off turn right to intercept BRG 088° MAG to cross MIVUN at or above FL 50 and climb to cleared level.

MIVUN 1D DEP:

DEP RWY 09L - After take off intercept BRG 088° MAG to cross MIVUN at or above FL 50 and climb to cleared level.

IBNUX 1C DEP:

DEP RWY 27R - After take off turn left to intercept BRG 137° MAG to IBNUX and climb to cleared level.

IBNUX 1D DEP:

DEP RWY 09L - After take off turn right to intercept BRG 137° MAG to IBNUX and climb to cleared level.

ORSAR 1C DEP:

DEP RWY 27R - After take off turn left to intercept BRG 178° MAG to ORSAR and climb to cleared level.

ORSAR 1D DEP:

DEP RWY 09L - After take off turn right to intercept BRG 178° MAG to ORSAR and climb to cleared level.

ALNOL 1C DEP:

DEP RWY 27R - After take off turn right to intercept BRG 297° MAG to cross ALNOL at or above FL 60 and climb to cleared level.

ALNOL 1D DEP:

DEP RWY 09L - After take off turn left to intercept BRG 297° MAG to cross ALNOL at or above FL 60 and climb to cleared level.

STANDARD ARRIVAL CHART-
INSTRUMENT (STAR)-ICAO

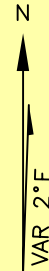
TRANSITION ALTITUDE
3000 FT

TWR 118.450, 119.600
121.675
ATIS 128.000

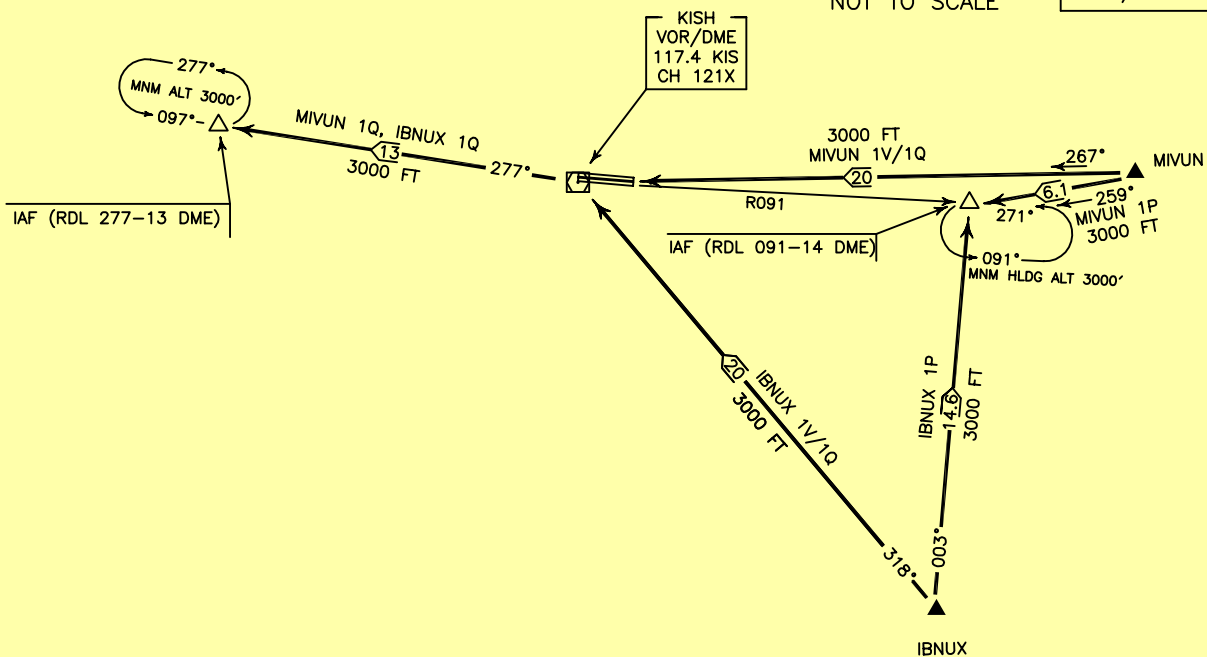
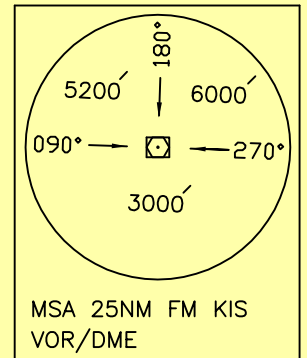
KISH ISLAND/KISH
RWY 27R, 09L
MIVUN 1P/1Q/1V
IBNUX 1P/1Q/1V

ALL DIRECTIONS ARE MAGNETIC.
LEVEL AND ELEVATIONS ARE IN FEET.
DISTANCES ARE IN NAUTICAL MILES.

CTR and ATZ class "D".



NOT TO SCALE



MIVUN 1P ARR:

FM MIVUN proceed to IAF (RDL 091-14 DME), MAG TR 259°, DIST 6.1 NM, MNM ALT 3000 FT.

MIVUN 1Q ARR:

FM MIVUN proceed to IAF (RDL 277-13 DME) via overhead KIS VOR/DME, MAG TR 267° up to overhead, DIST 20 NM, then MAG TR 277° to IAF, DIST 13 NM, MNM ALT 3000 FT.

MIVUN 1V ARR:

FM MIVUN proceed to KIS VOR/DME, MAG TR 267°, DIST 20 NM, MNM ALT 3000 FT.

IBNUX 1P ARR:

FM IBNUX proceed to IAF (RDL 091-14 DME), MAG TR 003°, DIST 14.6 NM, MNM ALT 3000 FT.

IBNUX 1Q ARR:

FM IBNUX proceed to IAF (RDL 277-13 DME) via overhead KIS VOR/DME, MAG TR 318° up to overhead, DIST 20 NM, then MAG TR 277° to IAF, DIST 13 NM, MNM ALT 3000 FT.

IBNUX 1V ARR:

FM IBNUX proceed to KIS VOR/DME, MAG TR 318°, DIST 20 NM, MNM ALT 3000 FT.

STANDARD ARRIVAL CHART—
INSTRUMENT (STAR)—ICAO

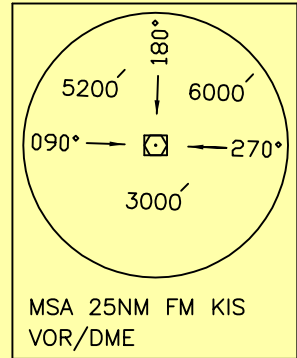
TRANSITION ALTITUDE
3000 FT

TWR 118.450, 119.600
121.675
ATIS 128.000

KISH ISLAND/KISH
RWY 27R, 09L
ORSAR 1P/1Q/1V
ALNOL 1P/1Q/1V

ALL DIRECTIONS ARE MAGNETIC.
LEVEL AND ELEVATIONS ARE IN FEET.
DISTANCES ARE IN NAUTICAL MILES.

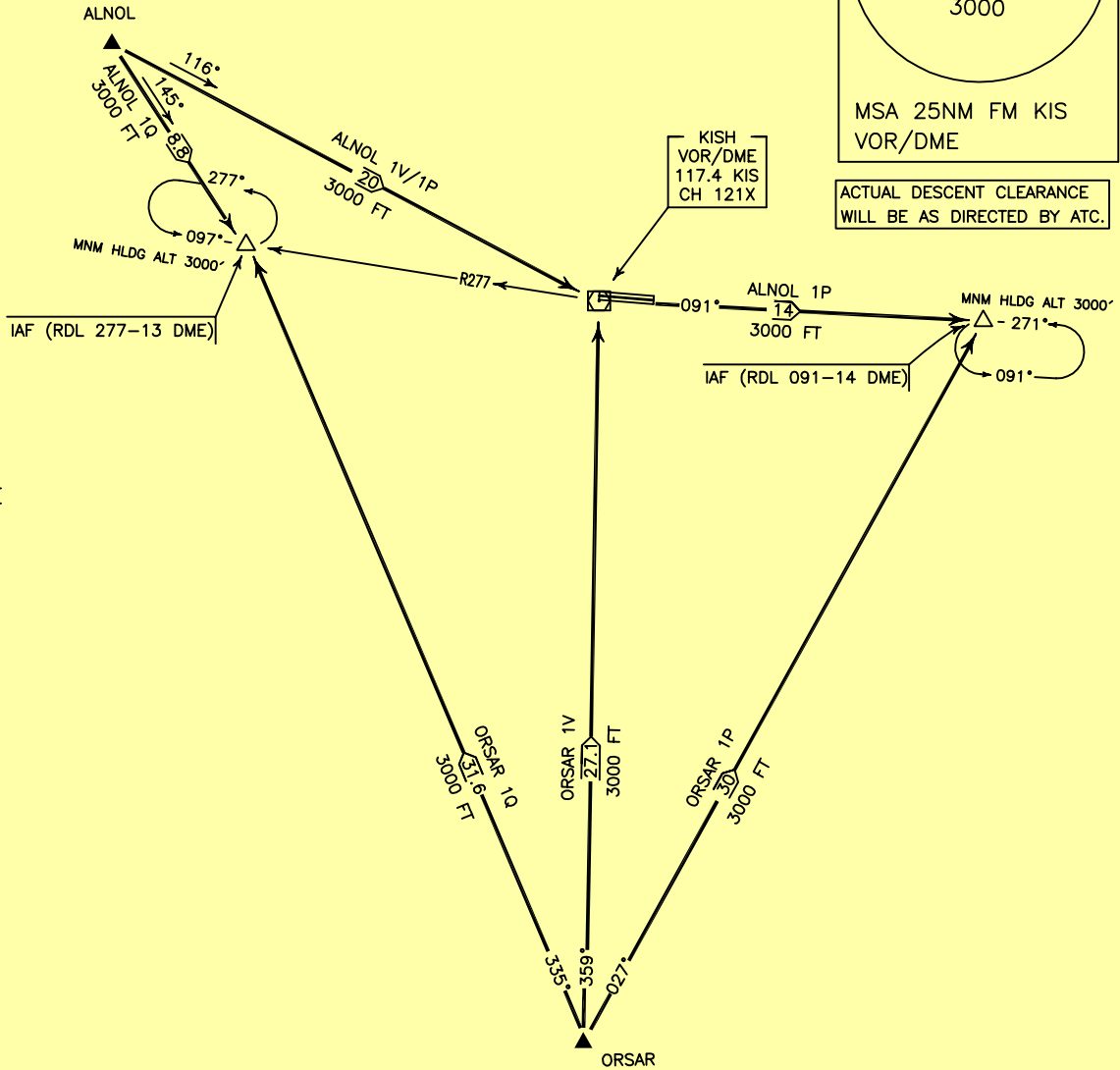
CTR and ATZ class "D".



ACTUAL DESCENT CLEARANCE
WILL BE AS DIRECTED BY ATC.

N
↑
VAR 2°E

NOT TO SCALE



ORSAR 1P ARR:

FM ORSAR proceed to IAF (RDL 091-14 DME), MAG TR 027°, DIST 30 NM, MNM ALT 3000 FT.

ORSAR 1Q ARR:

FM ORSAR proceed to IAF (RDL 277-13 DME), MAG TR 335°, DIST 31.6 NM, MNM ALT 3000 FT.

ORSAR 1V ARR:

FM ORSAR proceed to KIS VOR/DME, MAG TR 359°.DIST 27.1 NM, MNM ALT 3000 FT.

ALNOL 1P ARR:

FM ALNOL proceed to IAF (RDL 091-14 DME) via overhead KIS VOR/DME, MAG TR 116° up to overhead, DIST 20 NM, then MAG TR 091° to IAF, DIST 14 NM, MNM ALT 3000 FT.

ALNOL 1Q ARR:

FM ALNOL proceed to IAF (RDL 277-13 DME), MAG TR 145°, DIST 8.8 NM, MNM ALT 3000 FT.

ALNOL 1V ARR:

FM ALNOL proceed to KIS VOR/DME, MAG TR 116°, DIST 20 NM, MNM ALT 3000 FT.

STANDARD ARRIVAL CHART-
INSTRUMENT (STAR)-ICAO

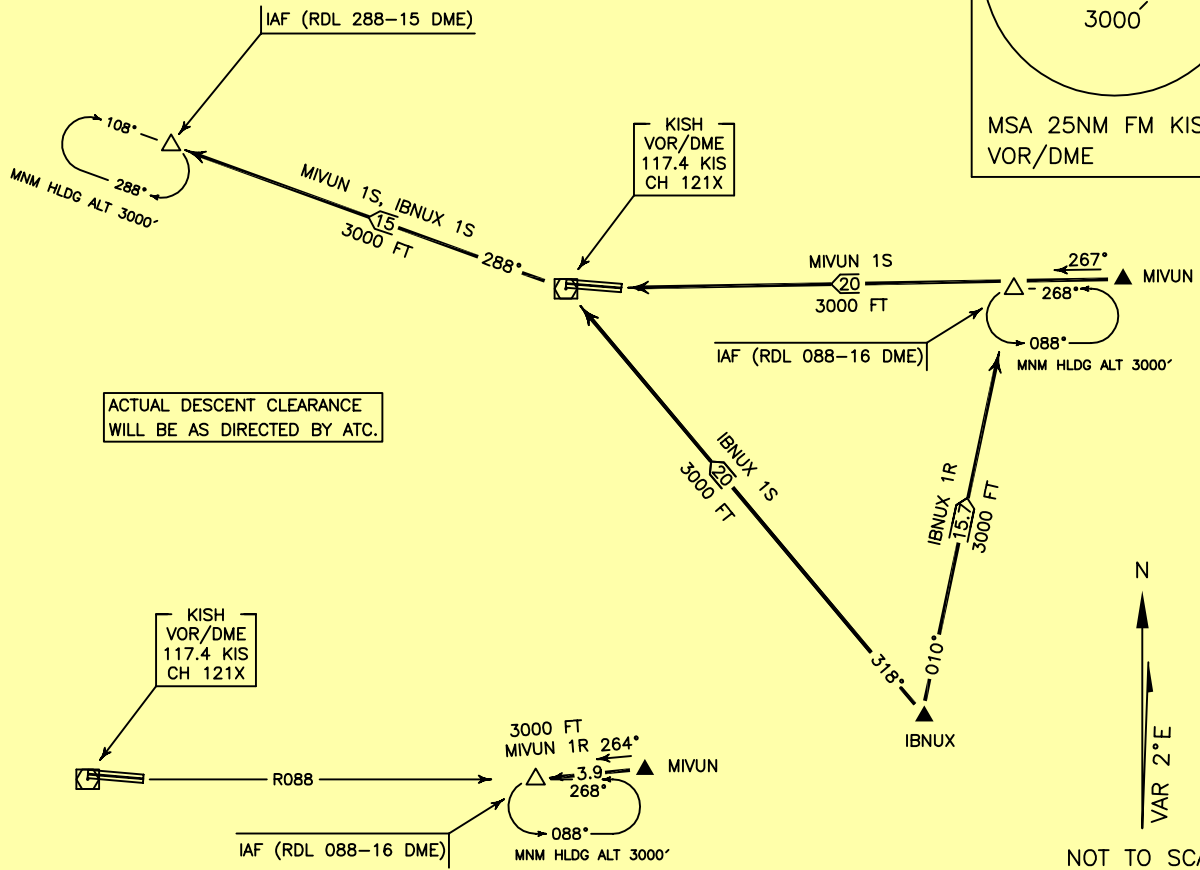
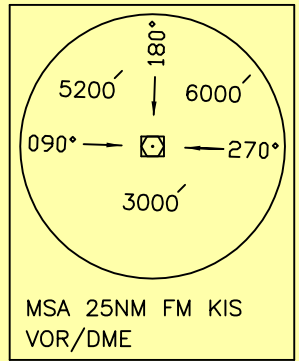
TRANSITION ALTITUDE
3000 FT

TWR 118.450, 119.600
121.675
ATIS 128.000

KISH ISLAND/KISH
RWY 27R, 09L
MIVUN 1R/1S
IBNUX 1R/1S

ALL DIRECTIONS ARE MAGNETIC.
LEVEL AND ELEVATIONS ARE IN FEET.
DISTANCES ARE IN NAUTICAL MILES.

CTR and ATZ class "D".



MIVUN 1R ARR:

FM MIVUN proceed to IAF (RDL 088-16 DME), MAG TR 264°, DIST 3.9 NM, MNM ALT 3000 FT.

MIVUN 1S ARR:

FM MIVUN proceed to IAF (RDL 288-15 DME), via overhead KIS VOR/DME, MAG TR 267° up to overhead, DIST 20 NM, then MAG TR 288° to IAF, DIST 15 NM, MNM ALT 3000 FT.

IBNUX 1R ARR:

FM IBNUX proceed to IAF (RDL 088-16 DME), MAG TR 010°, DIST 15.7 NM, MNM ALT 3000 FT.

IBNUX 1S ARR:

FM IBNUX proceed to IAF (RDL 288-15 DME), via overhead KIS VOR/DME, MAG TR 318° up to overhead, DIST 20 NM, then MAG TR 288° to IAF, DIST 15 NM, MNM ALT 3000 FT.

STANDARD ARRIVAL CHART—
INSTRUMENT (STAR)—ICAO

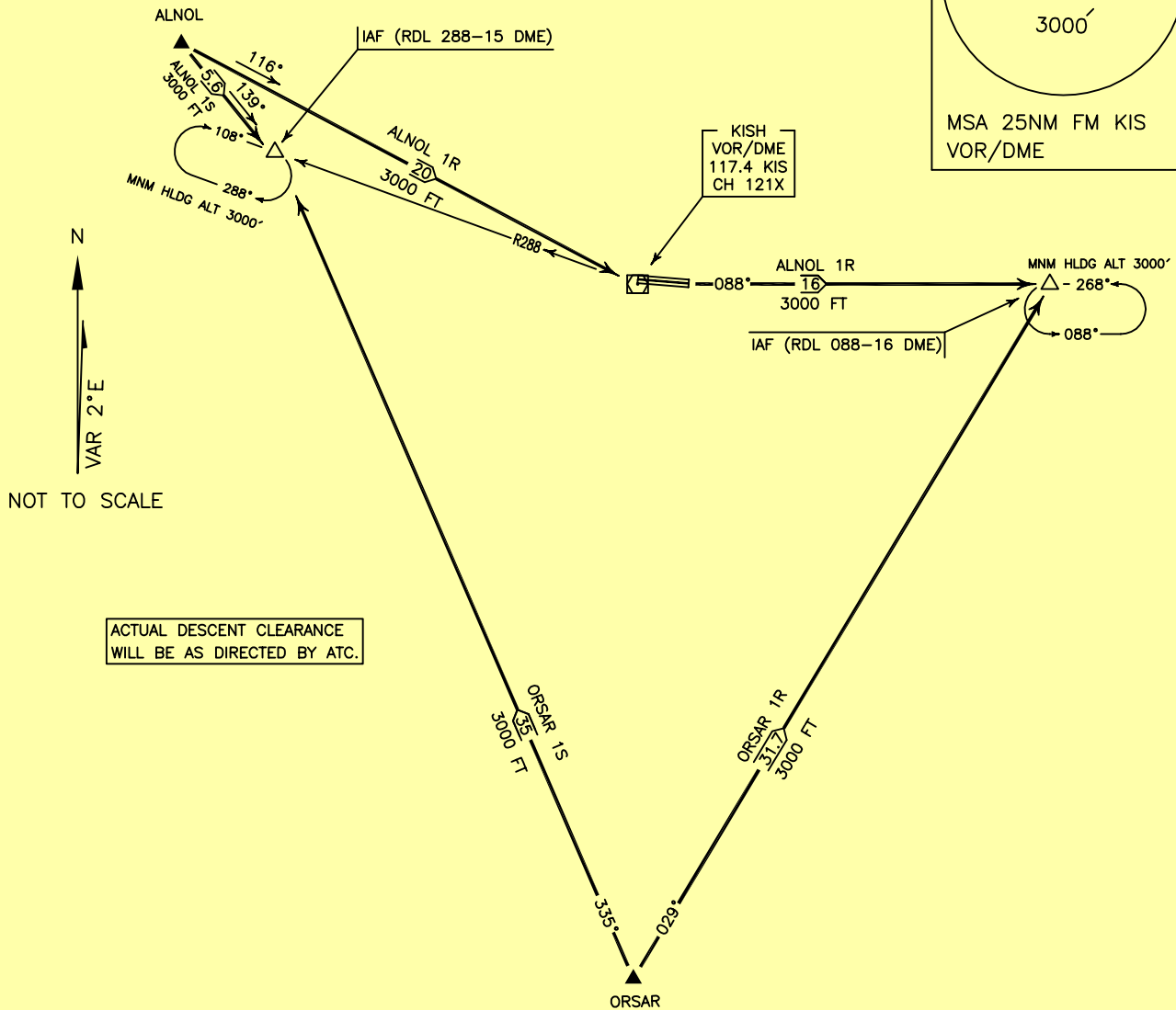
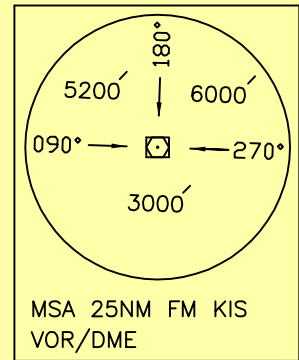
TRANSITION ALTITUDE
3000 FT

TWR 118.450, 119.600
121.675
ATIS 128.000

KISH ISLAND/KISH
RWY 27R, 09L
ORSAR 1R/1S
ALNOL 1R/1S

ALL DIRECTIONS ARE MAGNETIC.
LEVEL AND ELEVATIONS ARE IN FEET.
DISTANCES ARE IN NAUTICAL MILES.

CTR and ATZ class "D".



ORSAR 1R ARR:

FM ORSAR proceed to IAF (RDL 088-16 DME), MAG TR 029°, DIST 31.7 NM, MNM ALT 3000 FT.

ORSAR 1S ARR:

FM ORSAR proceed to IAF (RDL 288-15 DME), MAG TR 335°, DIST 35 NM, MNM ALT 3000 FT.

ALNOL 1R ARR:

FM ALNOL proceed to IAF (RDL 088-16 DME), via overhead KIS VOR/DME, MAG TR 116° up to overhead, DIST 20 NM, then MAG TR 088° to IAF, DIST 16 NM, MNM ALT 3000 FT.

ALNOL 1S ARR:

FM ALNOL proceed to IAF (RDL 288-15 DME), MAG TR 139°, DIST 5.6 NM, MNM ALT 3000 FT.

STANDARD ARRIVAL CHART-
INSTRUMENT (STAR)-ICAO

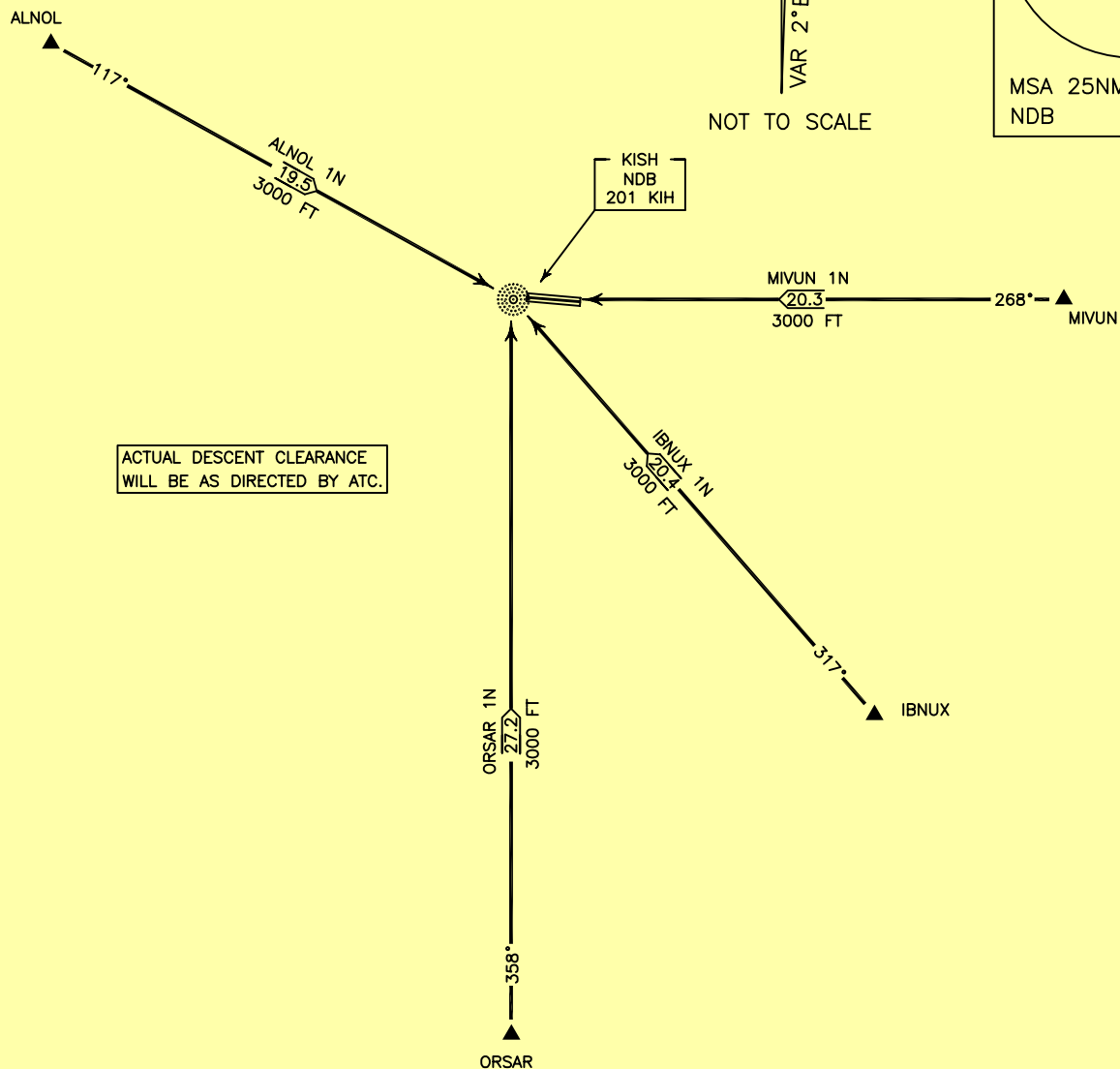
TRANSITION ALTITUDE
3000 FT

TWR 118.450, 119.600
121.675
ATIS 128.000

KISH ISLAND/KISH
RWY 27R, 09L
MIVUN 1N, IBNUX 1N
ORSAR 1N, ALNOL 1N

ALL DIRECTIONS ARE MAGNETIC.
LEVEL AND ELEVATIONS ARE IN FEET.
DISTANCES ARE IN NAUTICAL MILES.

CTR and ATZ class "D".



MIVUN 1N ARR:

FM MIVUN proceed to KIH NDB, MAG TR 268°, DIST 20.3 NM, MNM ALT 3000 FT.

IBNUX 1N ARR:

FM IBNUX proceed to KIH NDB, MAG TR 317°, DIST 20.4 NM, MNM ALT 3000 FT.

ORSAR 1N ARR:

FM ORSAR proceed to KIH NDB, MAG TR 358°, DIST 27.2 NM, MNM ALT 3000 FT.

ALNOL 1N ARR:

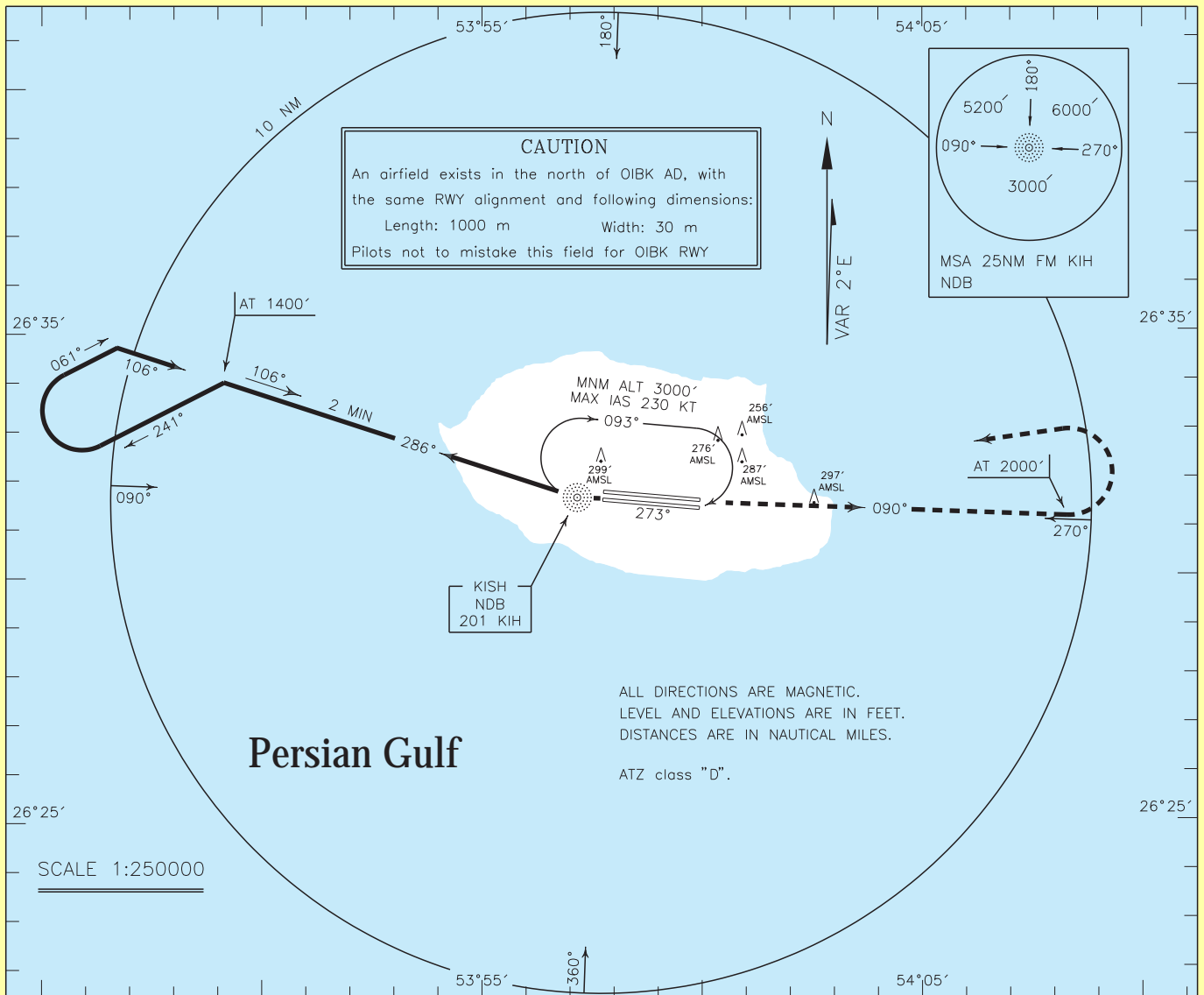
FM ALNOL proceed to KIH NDB, MAG TR 117°, DIST 19.5 NM, MNM ALT 3000 FT.

INSTRUMENT
APPROACH
CHART-ICAO

AERODROME ELEV. 99 FT
HEIGHTS RELATED TO
AERODROME ELEVATION

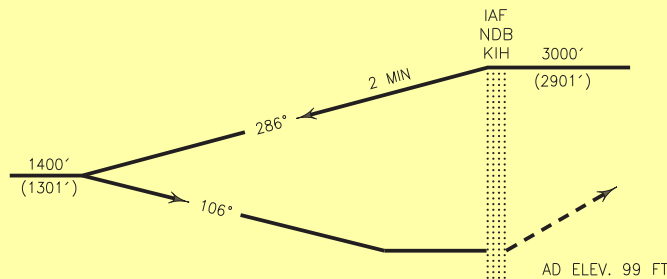
TWR 118.450, 119.600
121.675
ATIS 128.000

KISH ISLAND/KISH
NDB RWY 09L
CAT A/B/C/D



MISSED APPROACH: Over NDB climb on BRG 090° to 2000 FT, then turn left to rejoin HLDG at 3000 FT.

TA 3000'



10 | 5 | 0 | 1 | 2 | 3 | 4 | 5 NM FM THR RWY 09L

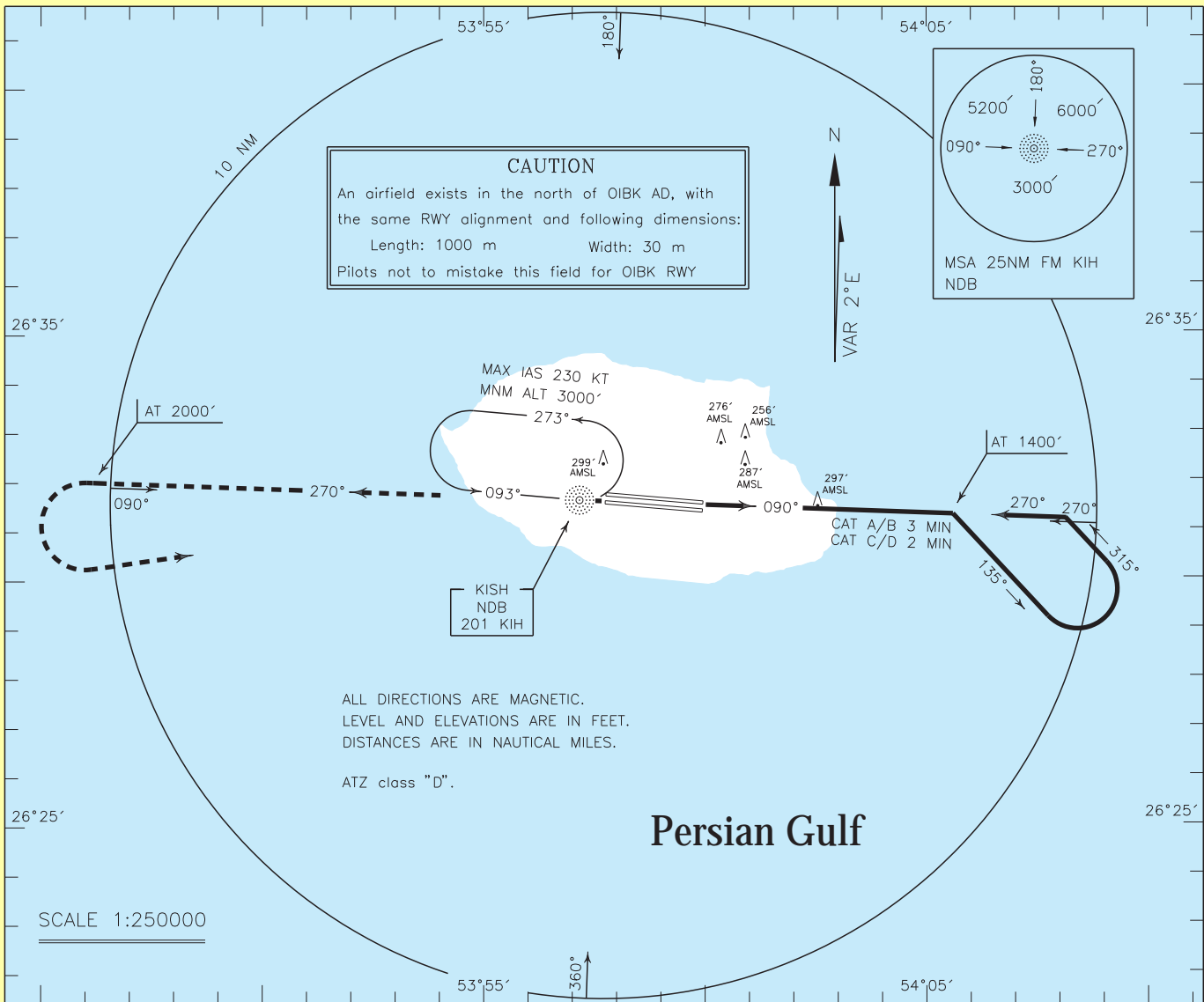
OCA(H)	A	B	C	D
Straight		500' (401')		
Circling		880' (781')		

INSTRUMENT
APPROACH
CHART-ICAO

AERODROME ELEV. 99 FT
HEIGHTS RELATED TO
AERODROME ELEVATION

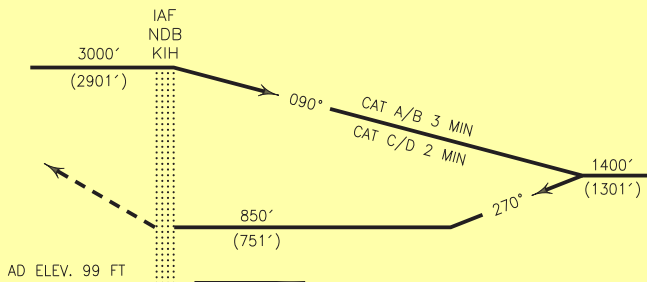
TWR 118.450, 119.600
121.675
ATIS 128.000

KISH ISLAND/KISH
NDB RWY 27R
CAT A/B/C/D



MISSED APPROACH: Over NDB climb on BRG 270° to 2000 FT, then turn left to rejoin HLDG at 3000 FT.

TA 3000'



AD ELEV. 99 FT | 5 | 4 | 3 | 2 | 1 | 0 | 5 | 10 NM FM THR RWY 27R

OCA(H)	A	B	C	D
Straight		850' (751')		
Circling		880' (781')		