

Tel: +98 21-66025108
 Fax: +9821-44649269
 Telex: 213889 EPDIR
 AFTN: OIIYNYX
 Email: ais_iran@airport.ir
 ais_subscription@airport.ir
 Web Site: www.airport.ir/ais

ISLAMIC REPUBLIC OF IRAN
AERONAUTICAL INFORMATION SERVICES
 DEPUTY CEO for AERONAUTICAL OPERATIONS
 IRANIAN AIRPORTS & AIR NAVIGATION COMPANY (IAC)
 MEHRABAD INTL. AIRPORT
 P.O.BOX : 13185-1334, Postal Code : 1387835283
 TEHRAN – IRAN

AIP Supplement
 03/22
 01 JAN 22

Effective Date:
27 JAN 22

New SIDs, STARs and IACs at OIZH:

AIP SUP	NOTAM/SUP Superseded
AIP SUP 03/22 – new SIDs, STARs and IACs at OIZH	
B) 2201270000 C) PERM	
OIZH AD 2.24 CHARTS RELATED TO AN AERODROME	
Aerodrome Chart – ICAO Standard Departure Chart - Instrument – ICAO Standard Arrival Chart - Instrument – ICAO	AD 2 OIZH ADC AD 2 OIZH SID 1-1 AD 2 OIZH SID 1-2 AD 2 OIZH SID 1-3 AD 2 OIZH SID 1-4 AD 2 OIZH SID 1-5 AD 2 OIZH SID 1-6 AD 2 OIZH SID 2-1 AD 2 OIZH SID 2-2 AD 2 OIZH SID 2-3 AD 2 OIZH SID 2-4 AD 2 OIZH STAR 0-1-1 AD 2 OIZH STAR 0-1-2 AD 2 OIZH STAR 0-1-3 AD 2 OIZH STAR 0-1-4 AD 2 OIZH STAR 0-2-1 AD 2 OIZH STAR 0-2-2 AD 2 OIZH STAR 0-2-3 AD 2 OIZH STAR 0-2-4 AD 2 OIZH STAR 0-2-5 AD 2 OIZH STAR 0-3-1 AD 2 OIZH STAR 0-3-2 AD 2 OIZH STAR 1-1 AD 2 OIZH STAR 1-2 AD 2 OIZH STAR 1-3 AD 2 OIZH STAR 1-4 AD 2 OIZH STAR 1-5 AD 2 OIZH STAR 2-1 AD 2 OIZH STAR 2-2

ISLAMIC REPUBLIC OF IRAN

AERONAUTICAL INFORMATION SERVICES

DEPUTY CEO for AERONAUTICAL OPERATIONS

IRANIAN AIRPORTS & AIR NAVIGATION COMPANY (IAC)

MEHRABAD INTL. AIRPORT

P.O.BOX : 13185-1334, Postal Code : 1387835283

TEHRAN – IRAN

Tel: +98 21-66025108
Fax: +9821-44649269
Telex: 213889 EPDIR
AFTN: OIIINYX
Email: ais_iran@airport.ir
ais_subscription@airport.ir
Web Site: www.airport.ir/ais

AIP Supplement

03/22

01 JAN 22

Instrument Approach Chart – ICAO

AD 2 OIZH IAC 0-1-1

AD 2 OIZH IAC 0-1-2

AD 2 OIZH IAC 0-2-1

AD 2 OIZH IAC 0-2-2

↔ AD 2 OIZH IAC 1-1

↔ AD 2 OIZH IAC 1-2

↔ AD 2 OIZH IAC 2-1

→ AD 2 OIZH IAC 2-2

AD 2 OIZH IAC 3-1

AD 2 OIZH IAC 3-2

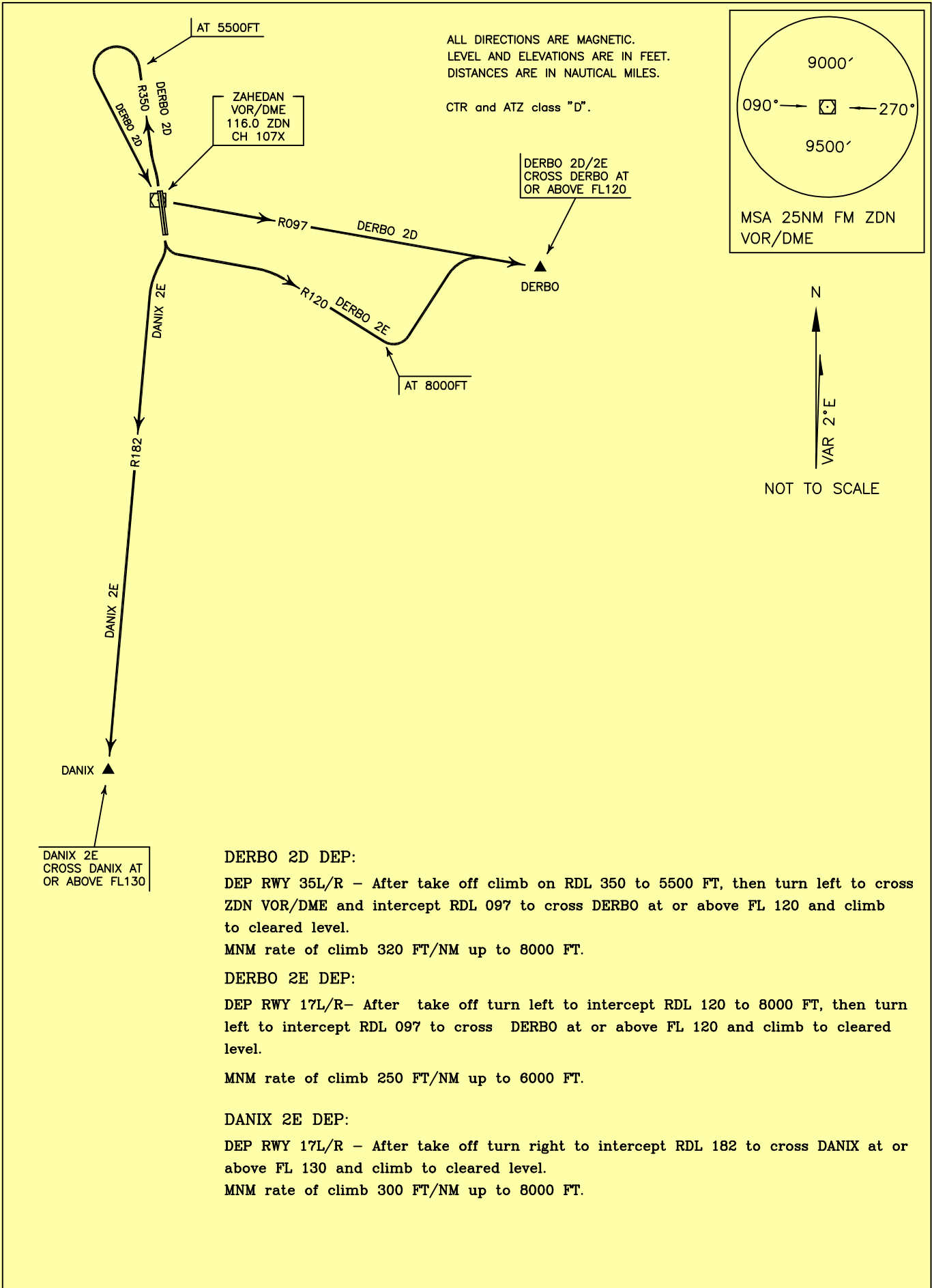
AD 2 OIZH IAC 4-1

AD 2 OIZH IAC 5-1

STANDARD DEPARTURE CHART-
INSTRUMENT (SID)-ICAO

TRANSITION ALTITUDE 11000 FT	TWR 118.100, 119.400 121.900 ATIS 128.450
---------------------------------	---

ZAHEDAN
RWY 35L/R, 17L/R
DERBO 2D/2E
DANIX 2E



DANIX 2E
CROSS DANIX AT
OR ABOVE FL130

DERBO 2D DEP:
DEP RWY 35L/R - After take off climb on RDL 350 to 5500 FT, then turn left to cross ZDN VOR/DME and intercept RDL 097 to cross DERBO at or above FL 120 and climb to cleared level.
MNM rate of climb 320 FT/NM up to 8000 FT.

DERBO 2E DEP:
DEP RWY 17L/R- After take off turn left to intercept RDL 120 to 8000 FT, then turn left to intercept RDL 097 to cross DERBO at or above FL 120 and climb to cleared level.
MNM rate of climb 250 FT/NM up to 6000 FT.

DANIX 2E DEP:
DEP RWY 17L/R - After take off turn right to intercept RDL 182 to cross DANIX at or above FL 130 and climb to cleared level.
MNM rate of climb 300 FT/NM up to 8000 FT.

STANDARD DEPARTURE CHART-
INSTRUMENT (SID)-ICAO

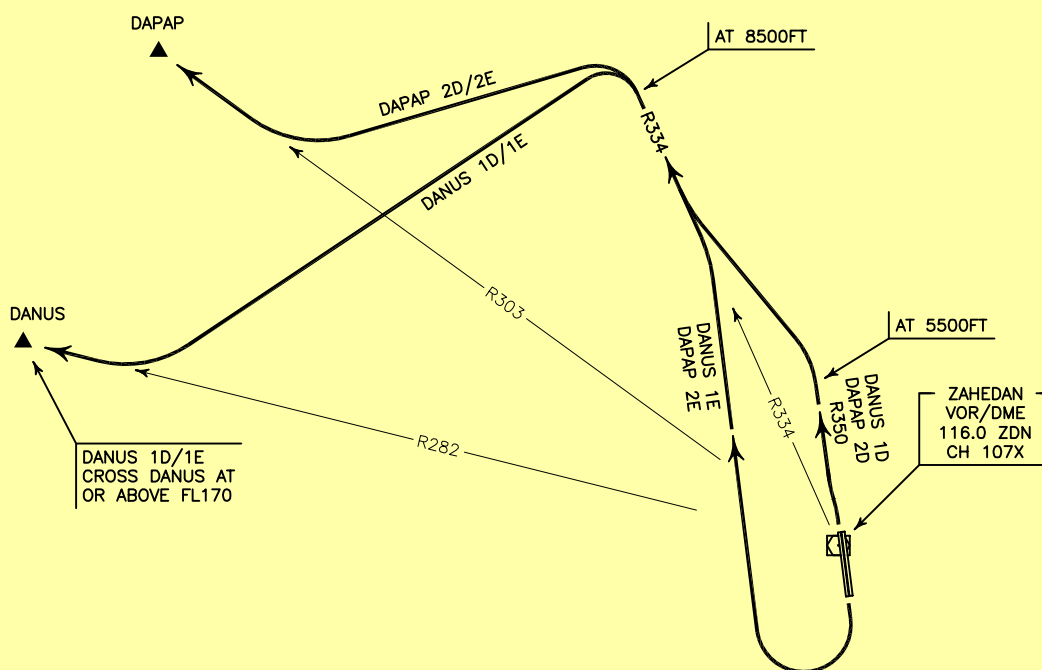
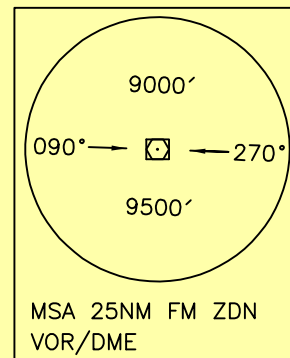
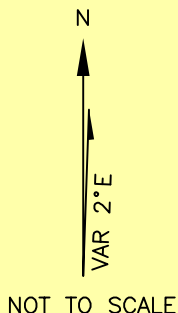
TRANSITION ALTITUDE
11000 FT

TWR 118.100, 119.400
121.900
ATIS 128.450

ZAHEDAN
RWY 35L/R, 17L/R
DANUS 1D/1E
DAPAP 2D/2E

ALL DIRECTIONS ARE MAGNETIC.
LEVEL AND ELEVATIONS ARE IN FEET.
DISTANCES ARE IN NAUTICAL MILES.

CTR and ATZ class "D".



DANUS 1D DEP:

DEP RWY 35L/R - After take off climb on RDL 350 to 5500 FT, then turn left to intercept RDL 334 and climb to 8500 FT, then turn left to intercept RDL 282 to cross DANUS at or above FL 170 and climb to cleared level.

DANUS 1E DEP:

DEP RWY 17L/R - After take off turn right to intercept RDL 334 and climb to 8500 FT, then turn left to intercept RDL 282 to cross DANUS at or above FL 170 and climb to cleared level.
DEP turn limited to 210 KT IAS MAX up to intercept RDL 334.

DAPAP 2D DEP:

DEP RWY 35L/R - After take off climb on RDL 350 to 5500 FT, then turn left to intercept RDL 334 and climb to 8500 FT, then turn left to intercept RDL 303 to DAPAP and climb to cleared level.

DAPAP 2E DEP:

DEP RWY 17L/R - After take off turn right to intercept RDL 334 and climb to 8500 FT, then turn left to intercept RDL 303 to DAPAP and climb to cleared level.
DEP turn limited to 210 KT IAS MAX up to intercept RDL 334.

STANDARD DEPARTURE CHART-
INSTRUMENT (SID)-ICAO

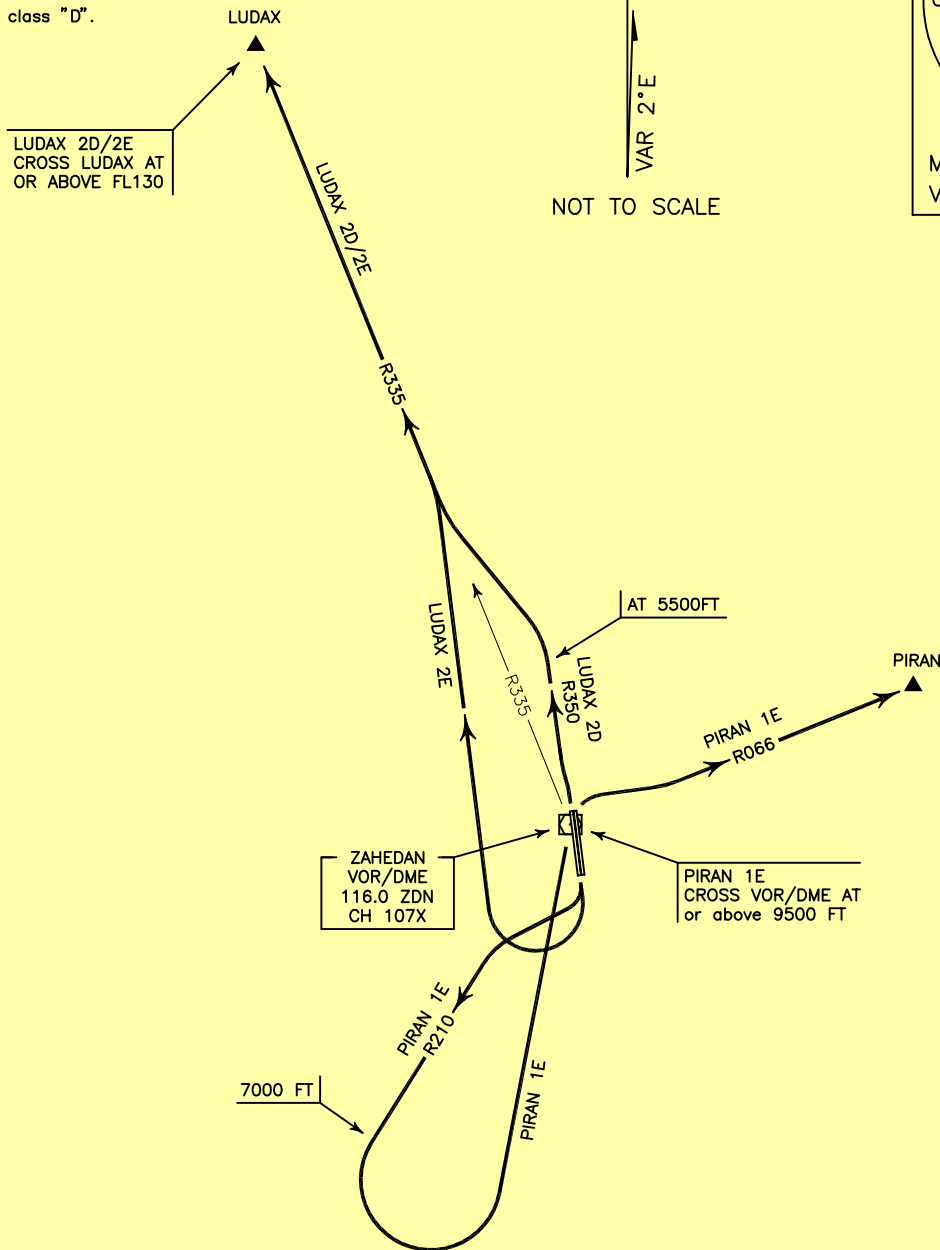
TRANSITION ALTITUDE
11000 FT

TWR 118.100, 119.400
121.900
ATIS 128.450

ZAHEDAN/ZAHEDAN
RWY 35L/R, 17L/R
PIRAN 1E
LUDAX 2D/2E

ALL DIRECTIONS ARE MAGNETIC.
LEVEL AND ELEVATIONS ARE IN FEET.
DISTANCES ARE IN NAUTICAL MILES.

CTR and ATZ class "D".



PIRAN 1E DEP:

DEP RWY 17L/R - After take off turn right to intercept RDL 210 up to 7000 FT, then turn left to cross overhead ZDN VOR/DME at or above 9500 FT, then turn right proceed on RDL 066 and climb to cleared level.
MNM rate of climb 290 FT/NM up to 7000 FT.

LUDAX 2D DEP:

DEP RWY 35L/R - After take off climb on RDL 350 to 5500 FT, turn left to intercept RDL 335 to cross LUDAX at or above FL 130 and climb to cleared level.

LUDAX 2E DEP:

DEP RWY 17L/R - After take off turn right to intercept RDL 335 to cross LUDAX at or above FL 130 and climb to cleared level.

DEP turn limited to 210 KT IAS MAX up to intercept RDL 335.

STANDARD DEPARTURE CHART-
INSTRUMENT (SID)-ICAO

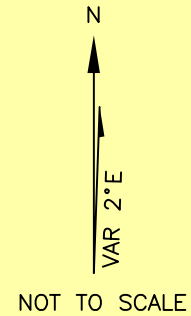
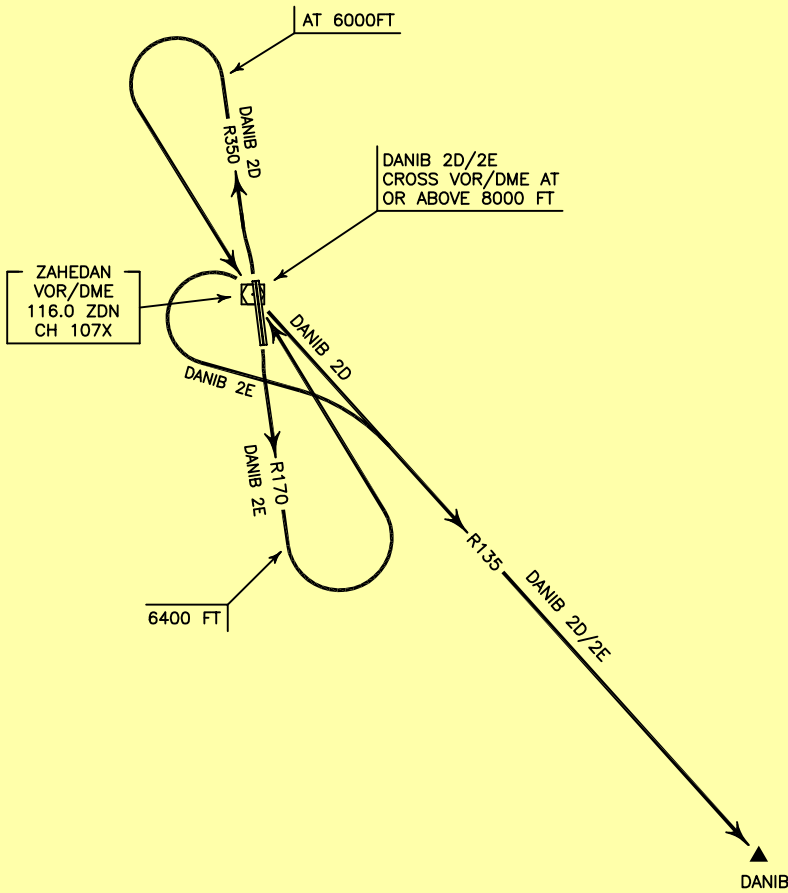
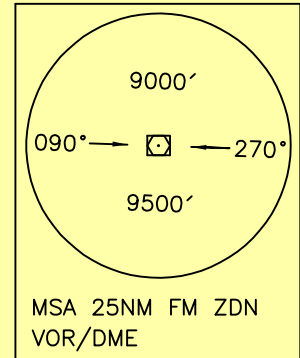
TRANSITION ALTITUDE
11000 FT

TWR 118.100, 119.400
121.900
ATIS 128.450

ZAHEDAN
RWY 35L/R, 17L/R
DANIB 2D/2E

ALL DIRECTIONS ARE MAGNETIC.
LEVEL AND ELEVATIONS ARE IN FEET.
DISTANCES ARE IN NAUTICAL MILES.

CTR and ATZ class "D".



DANIB 2D DEP:

DEP RWY 35L/R - After take off climb on RDL 350 to 6000 FT, then turn left to cross overhead ZDN VOR/DME at or above 8000 FT, then intercept RDL 135 to DANIB and climb to cleared level.

MNM rate of climb 320 FT/NM up to overhead ZDN VOR/DME.

Note: turn below 6000 FT is not authorized.

DANIB 2E DEP:

DEP RWY 17L/R - After take off climb on RDL 170 to 6400 FT, then turn left to cross overhead ZDN VOR/DME at or above 8000 FT, then turn left to intercept RDL 135 to DANIB and climb to cleared level.

MNM rate of climb 260 FT/NM up to overhead ZDN VOR/DME.

Note: turn below 6400 FT is not authorized.

STANDARD DEPARTURE CHART-
INSTRUMENT (SID)-ICAO

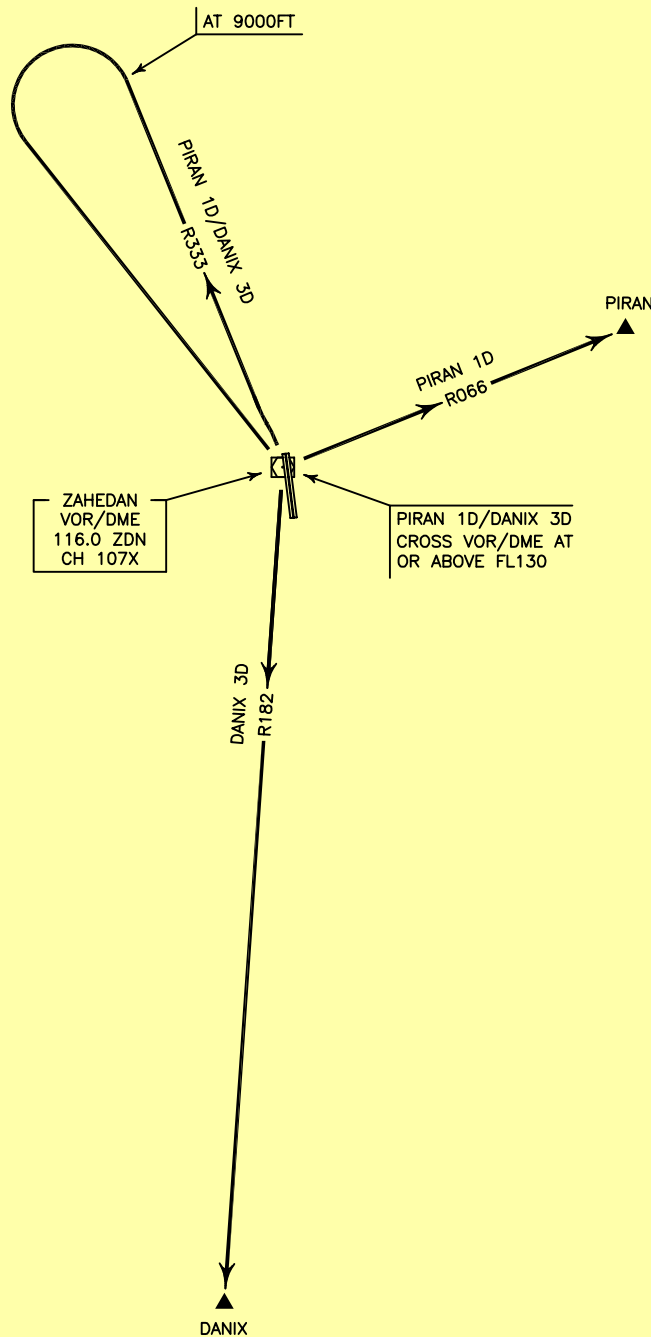
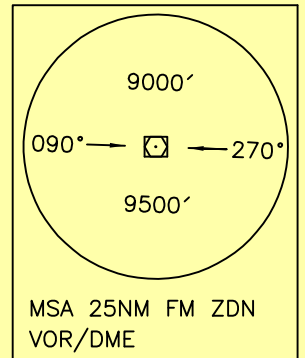
TRANSITION ALTITUDE
11000 FT

TWR 118.100, 119.400
121.900
ATIS 128.450

ZAHEDAN
RWY 35L/R, 17L/R
PIRAN 1D
DANIX 3D

ALL DIRECTIONS ARE MAGNETIC.
LEVEL AND ELEVATIONS ARE IN FEET.
DISTANCES ARE IN NAUTICAL MILES.

CTR and ATZ class "D".



PIRAN 1D DEP:

DEP RWY 35L/R - After take off climb on RDL 333 to 9000 FT, then turn left cross overhead ZDN VOR/DME at or above FL 130, then turn left to intercept RDL 066 to PIRAN and climb to cleared level. MNM rate of climb 300 FT/NM.

DANIX 3D DEP:

DEP RWY 35L/R - After take off climb on RDL 333 to 9000 FT, then turn left cross overhead ZDN VOR/DME at or above FL 130, then turn right to intercept RDL 182 to DANIX and climb to cleared level. MNM rate of climb up to 9000 FT, 300 FT/NM.

STANDARD DEPARTURE CHART-
INSTRUMENT (SID)-ICAO

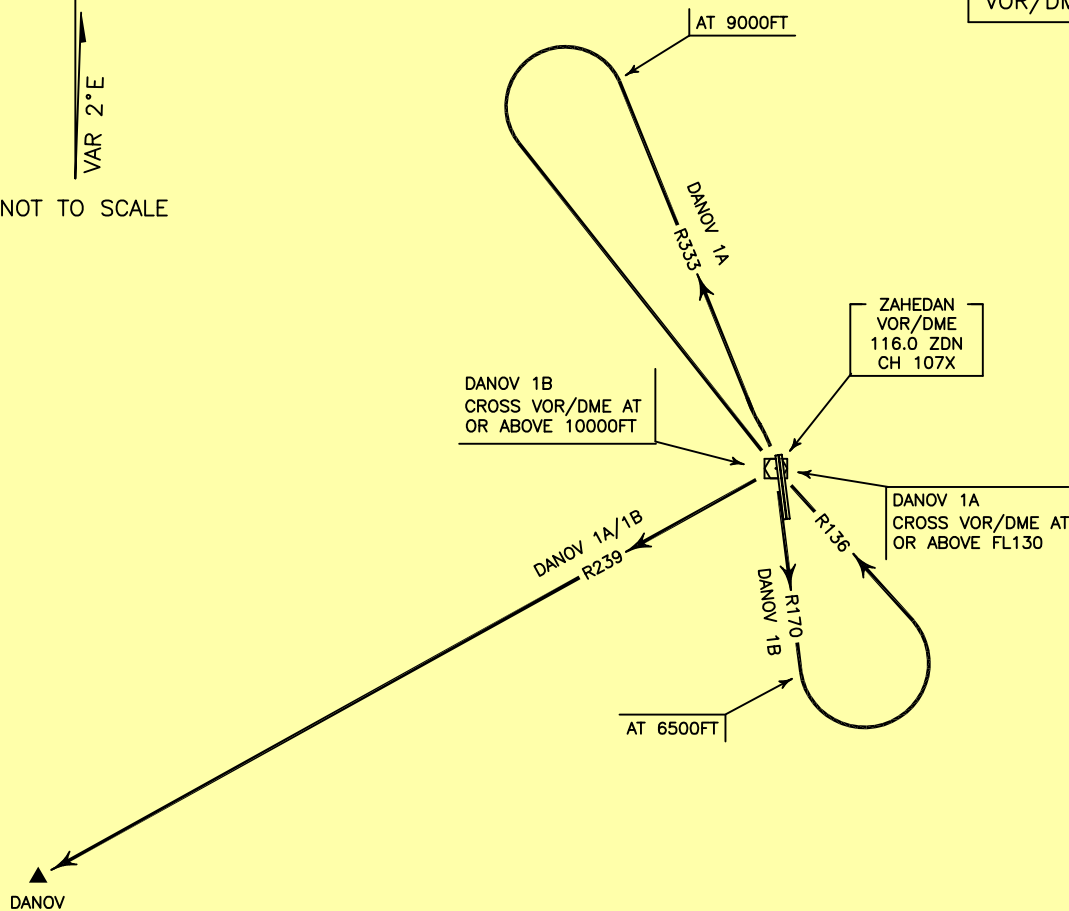
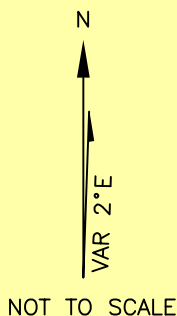
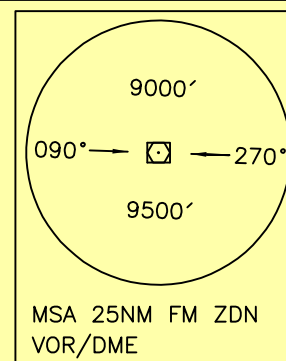
TRANSITION ALTITUDE
11000 FT

TWR 118.100, 119.400
121.900
ATIS 128.450

ZAHEDAN
RWY 35L/R, 17L/R
DANOV 1A/1B

ALL DIRECTIONS ARE MAGNETIC.
LEVEL AND ELEVATIONS ARE IN FEET.
DISTANCES ARE IN NAUTICAL MILES.

CTR and ATZ class "D".



DANOV 1A DEP:

DEP RWY 35L/R - After take off climb on RDL 333 to 9000 FT, then turn left cross overhead ZDN VOR/DME at or above FL 130, then turn right to intercept RDL 239 to DANOV and climb to cleared level.
MNM rate of climb 300 FT/NM up to ALT 9000 FT.

DANOV 1B DEP:

DEP RWY 17L/R - After take off climb on RDL 170 to 6500 FT, then turn left to intercept RDL 136 to cross overhead ZDN VOR/DME at or above 10000 FT, then turn left to intercept RDL 239 to DANOV and climb to cleared level. MNM rate of climb 270 FT/NM up to ALT 6500 FT. MAX IAS up to overhead 270 KT.

STANDARD DEPARTURE CHART-
INSTRUMENT (SID)-ICAO

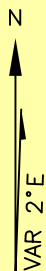
TRANSITION ALTITUDE
11000 FT

TWR 118.100, 119.400
121.900
ATIS 128.450

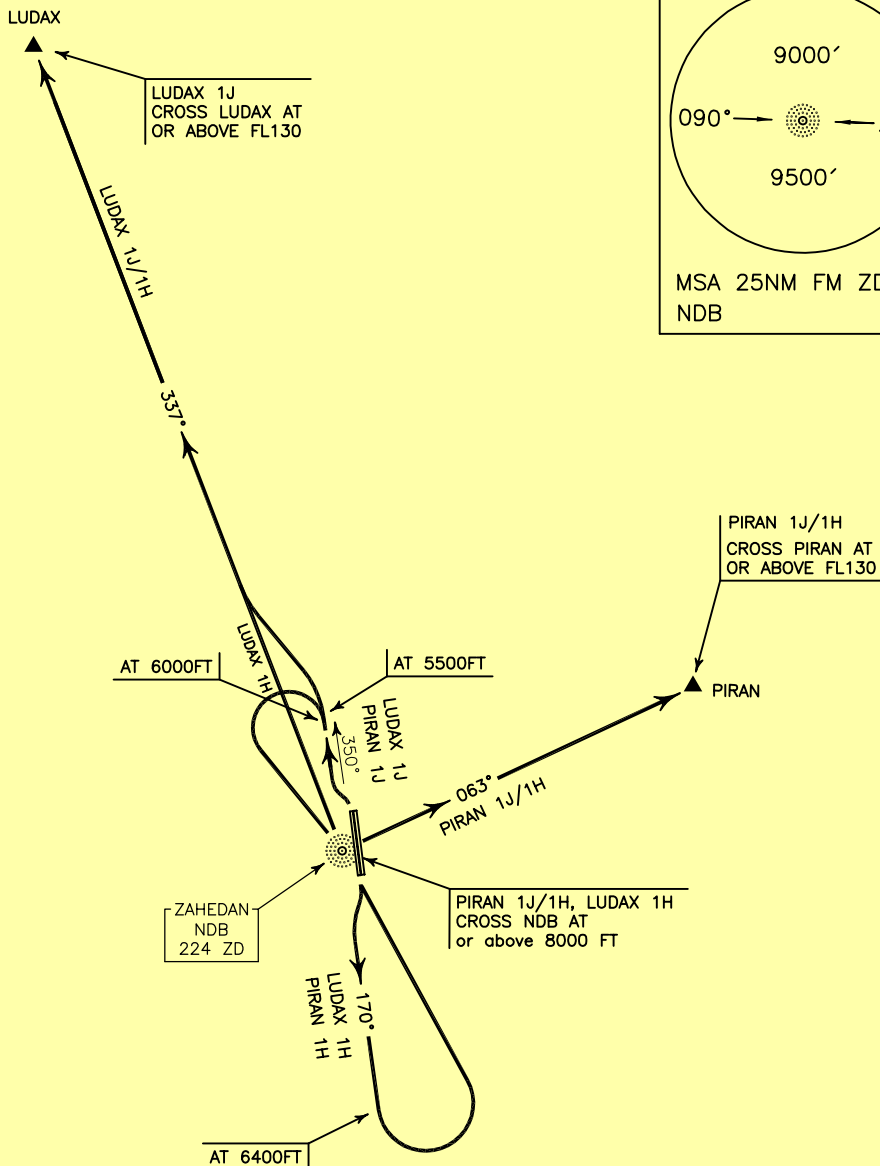
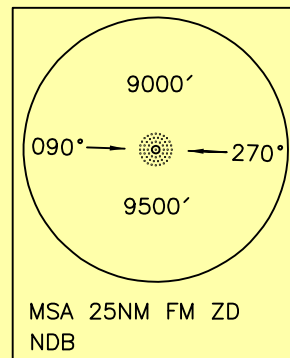
ZAHEDAN
RWY 35L/R, 17L/R
PIRAN 1J/IH
LUDAX 1J/1H

ALL DIRECTIONS ARE MAGNETIC.
LEVEL AND ELEVATIONS ARE IN FEET.
DISTANCES ARE IN NAUTICAL MILES.

CTR and ATZ class "D".



NOT TO SCALE



PIRAN 1J DEP:

DEP RWY 35L/R - After take off climb on TR 350° MAG to 6000 FT, then turn left to cross overhead ZD NDB at or above 8000 FT, then intercept BRG 063° to cross PIRAN at or above FL 130 and climb to cleared level. MNM rate of climb 320 FT/NM. Turn below 6000 FT is not authorized.

PIRAN 1H DEP:

DEP RWY 17L/R - After take off climb on TR 170° MAG to 6400 FT, then turn left to cross overhead ZD NDB at or above 8000 FT, then turn right to intercept BRG 063° to cross PIRAN at or above FL 130 and climb to cleared level. MNM rate of climb 260 FT/NM up to overhead ZD NDB. Turn below 6400 FT is not authorized.

LUDAX 1J DEP:

DEP RWY 35L/R - After take off climb on TR 350° MAG to 5500 FT, then turn left to intercept BRG 337° to cross LUDAX at or above FL 130 and climb to cleared level.

LUDAX 1H DEP:

DEP RWY 17L/R - After take off climb on TR 170° MAG to 6400 FT, then turn left to cross overhead ZD NDB at or above 8000 FT, then intercept BRG 337° to LUDAX and climb to cleared level. MNM rate of climb 260 FT/NM up to overhead ZD NDB. Turn below 6400 FT is not authorized.

STANDARD DEPARTURE CHART-
INSTRUMENT (SID)-ICAO

TRANSITION ALTITUDE
11000 FT

TWR 118.100, 119.400
121.900
ATIS 128.450

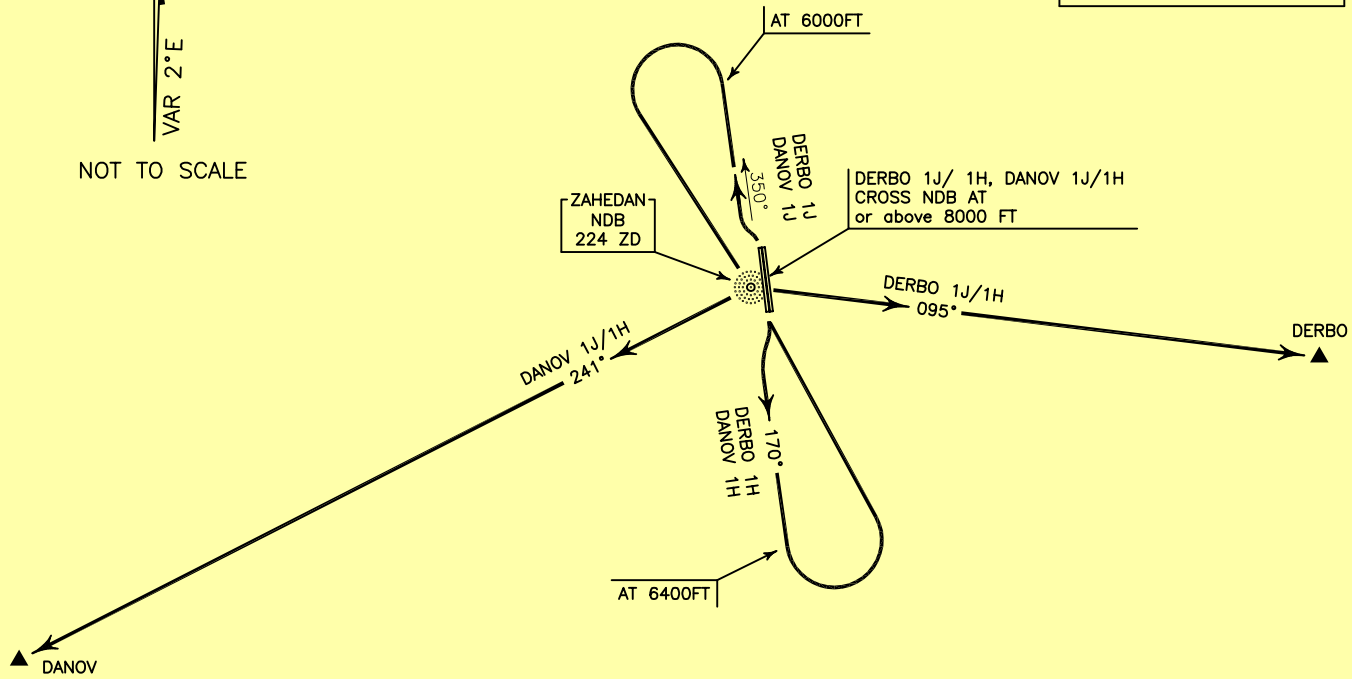
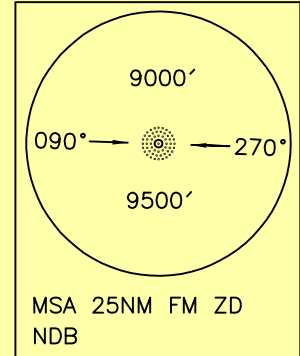
ZAHEDAN
RWY 35L/R, 17L/R
DEBRO 1J/1H
DANOV 1J/1H

ALL DIRECTIONS ARE MAGNETIC.
LEVEL AND ELEVATIONS ARE IN FEET.
DISTANCES ARE IN NAUTICAL MILES.

CTR and ATZ class "D".



NOT TO SCALE



DERBO 1J DEP:

DEP RWY 35L/R - After take off climb on TR 350° MAG to 6000 FT, then turn left to cross overhead ZD NDB at or above 8000 FT, then intercept BRG 095° to cross DERBO and climb to cleared level.
MNM rate of climb 320 FT/NM up to overhead ZD NDB. Turn below 6000 FT is not authorized.

DERBO 1H DEP:

DEP RWY 17L/R - After take off climb on TR 170° MAG to 6400 FT, then turn left to cross overhead ZD NDB at or above 8000 FT, then turn right to intercept BRG 095° to cross DERBO and climb to cleared level.
MNM rate of climb 260 FT/NM up to overhead ZD NDB. Turn below 6400 FT is not authorized.

DANOV 1J DEP:

DEP RWY 35L/R - After take off climb on TR 350° MAG to 6000 FT, then turn left to cross overhead ZD NDB at or above 8000 FT, then turn right to intercept BRG 241° to DANOV and climb to cleared level.
MNM rate of climb 320 FT/NM up to overhead ZD NDB. Turn below 6000 FT is not authorized.

DANOV 1H DEP:

DEP RWY 17L/R - After take off climb on TR 170° MAG to 6400 FT, then turn left to cross overhead ZD NDB at or above 8000 FT, then turn left to intercept BRG 241° to DANOV and climb to cleared level.
MNM rate of climb 260 FT/NM up to overhead ZD NDB. Turn below 6400 FT is not authorized.

STANDARD DEPARTURE CHART-
INSTRUMENT (SID)-ICAO

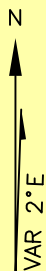
TRANSITION ALTITUDE
11000 FT

TWR 118.100, 119.400
121.900
ATIS 128.450

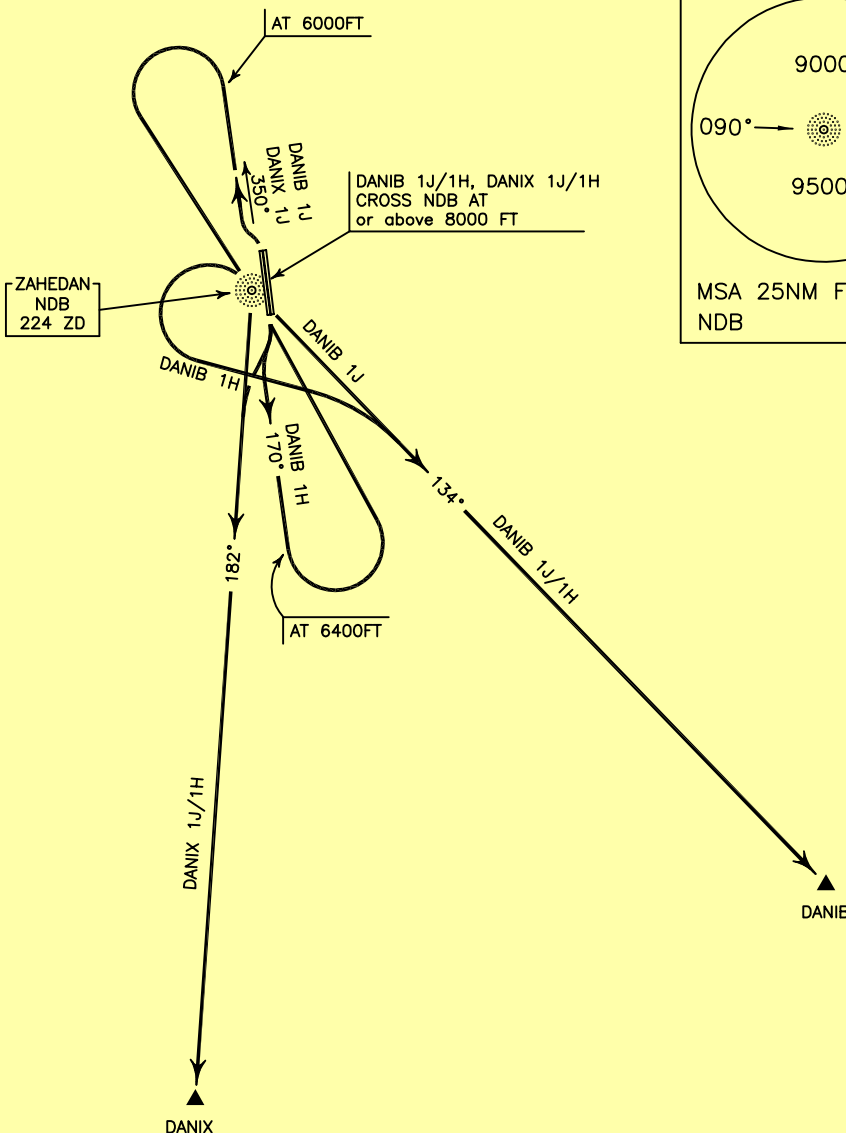
ZAHEDAN
RWY 35L/R, 17L/R
DANIB 1J/1H
DANIX 1J/1H

ALL DIRECTIONS ARE MAGNETIC.
LEVEL AND ELEVATIONS ARE IN FEET.
DISTANCES ARE IN NAUTICAL MILES.

CTR and ATZ class "D".



NOT TO SCALE



DANIB 1J DEP:

DEP RWY 35L/R - After take off climb on BRG 350° MAG to 6000 FT, then turn left to cross overhead ZD NDB at or above 8000 FT, then intercept BRG 134° MAG to DANIB and climb to cleared level.

MNM rate of climb 320 FT/NM up to overhead ZD NDB.

Note: Turn below 6000 FT is not authorized.

DANIB 1H DEP:

DEP RWY 17L/R - After take off climb on BRG 170° MAG to 6400 FT, then turn left to cross overhead ZD NDB at or above 8000 FT, then turn left to intercept BRG 134° MAG to DANIB and climb to cleared level.

MNM rate of climb 260 FT/NM up to overhead ZD NDB.

Note: Turn below 6400 FT is not authorized.

DANIX 1J DEP:

DEP RWY 35L/R - After take off climb on TR 350° MAG to 6000 FT, then turn left to cross overhead ZD NDB at or above 8000 FT, then intercept BRG 182° to DANIX and climb to cleared level.

MNM rate of climb 320 FT/NM up to overhead ZD NDB.

Note: Turn below 6000 FT is not authorized.

DANIX 1H DEP:

DEP RWY 17L/R - After take off turn right and climb BRG 182° to DANIX and climb to cleared level.

MNM rate of climb 300 FT/NM.

STANDARD DEPARTURE CHART-
INSTRUMENT (SID)-ICAO

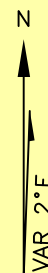
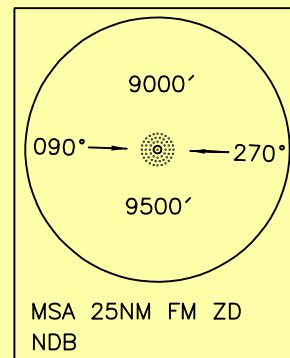
TRANSITION ALTITUDE
11000 FT

TWR 118.100, 119.400
121.900
ATIS 128.450

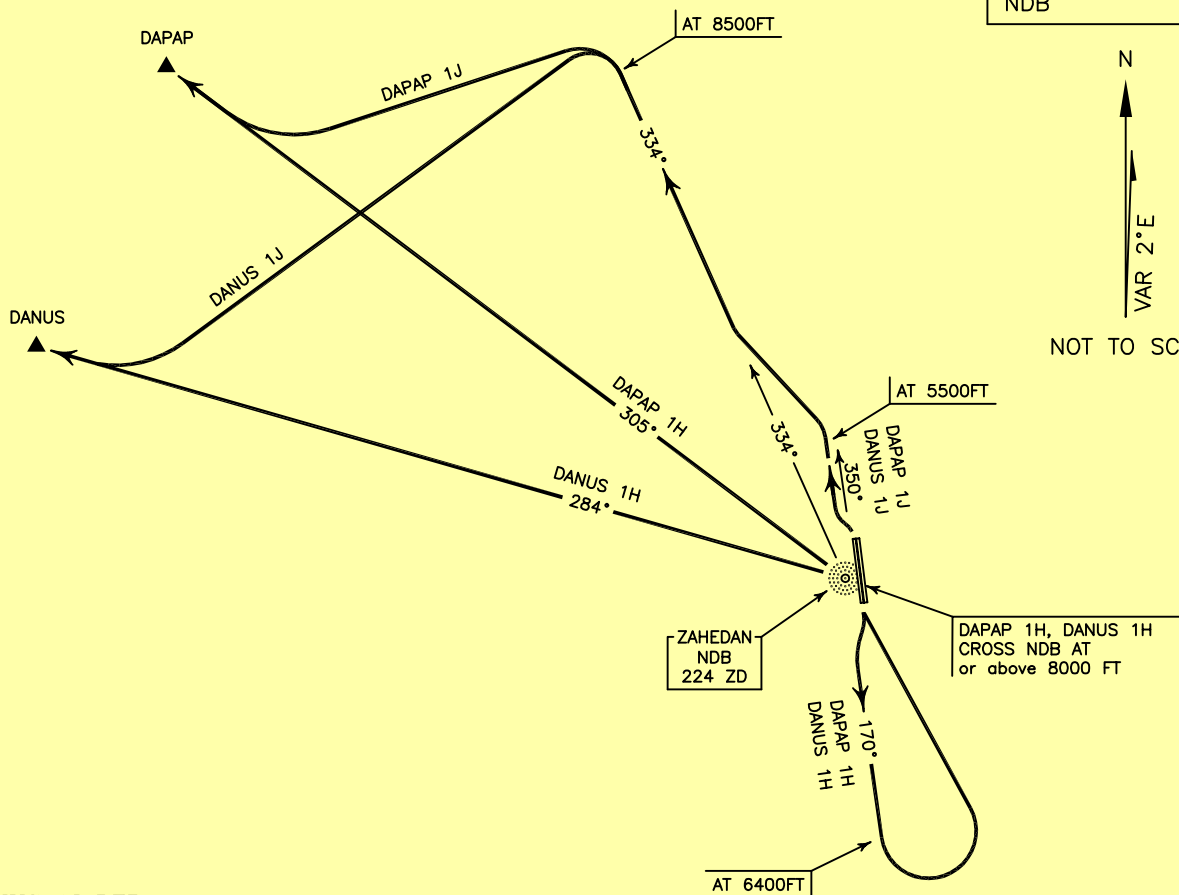
ZAHEDAN
RWY 35L/R, 17L/R
DANUS 1J/1H
DAPAP 1J/IH

ALL DIRECTIONS ARE MAGNETIC.
LEVEL AND ELEVATIONS ARE IN FEET.
DISTANCES ARE IN NAUTICAL MILES.

CTR and ATZ class "D".



NOT TO SCALE



DANUS 1J DEP:

DEP RWY 35L/R - After take off climb on TR 350° MAG to 5500 FT, then turn left to intercept BRG 334° and climb to 8500 FT to intercept BRG 284° to DANUS and climb to cleared level.

DANUS 1H DEP:

DEP RWY 17L/R - After take off climb on TR 170° MAG to 6400 FT, then turn left to cross overhead ZD NDB at or above 8000 FT, then turn left to intercept BRG 284° to DANUS and climb to cleared level.
MNM rate of climb 260 FT/NM up to overhead ZD NDB. Turn below 6400 FT is not authorized.

DAPAP 1J DEP:

DEP RWY 35L/R - After take off climb on TR 350° MAG to 5500 FT, then turn left to intercept BRG 334° and climb to 8500 FT to intercept BRG 305° to DAPAP and climb to cleared level.

DAPAP 1H DEP:

DEP RWY 17L/R - After take off climb on TR 170° MAG to 6400 FT, then turn left to cross overhead ZD NDB at or above 8000 FT, then turn left to intercept BRG 305° to DAPAP and climb to cleared level.
MNM rate of climb 260 FT/NM up to overhead ZD NDB. Turn below 6400 FT is not authorized.

STANDARD ARRIVAL CHART-
INSTRUMENT (STAR)-ICAO

TRANSITION ALTITUDE
11000 FT

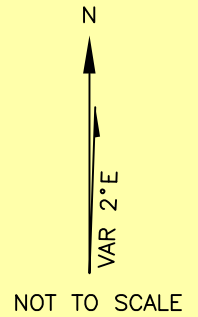
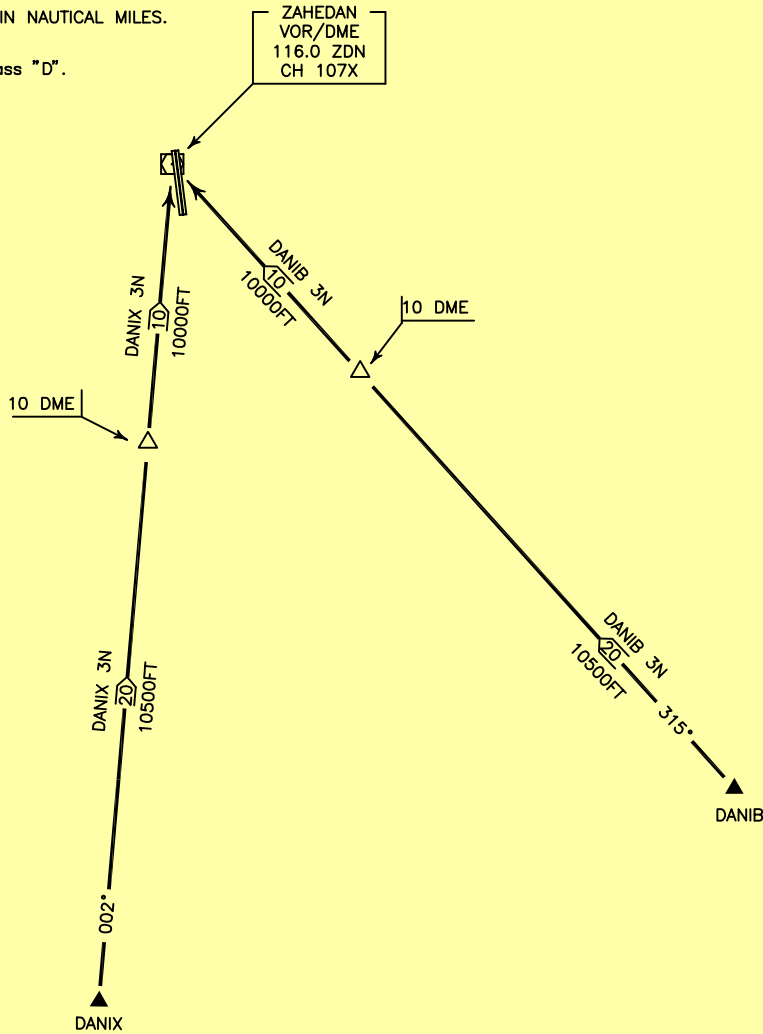
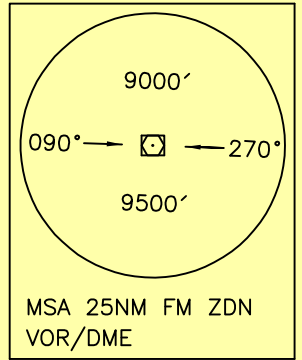
TWR 118.100, 119.400
121.900
ATIS 128.450

ZAHEDAN
RWY 35L/R, 17L/R
DANIB 3N
DANIX 3N

ALL DIRECTIONS ARE MAGNETIC.
LEVEL AND ELEVATIONS ARE IN FEET.
DISTANCES ARE IN NAUTICAL MILES.

CTR and ATZ class "D".

ZAHEDAN
VOR/DME
116.0 ZDN
CH 107X



DANIB 3N ARR:

FM DANIB proceed to ZDN VOR/DME, MAG TR 315°, DIST 30 NM, MNM ALT 10500 FT. after 10 DME
MNM ALT 10000 FT.

DANIX 3N ARR:

FM DANIX proceed to ZDN VOR/DME, MAG TR 002°, DIST 30 NM, MNM ALT 10500 FT. after 10 DME,
MNM ALT 10000 FT.

STANDARD ARRIVAL CHART-
INSTRUMENT (STAR)-ICAO

TRANSITION ALTITUDE
11000 FT

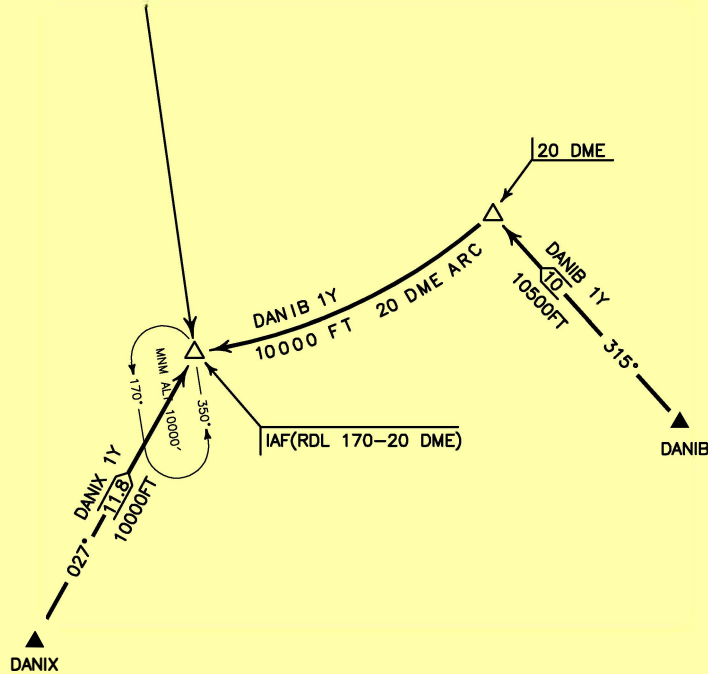
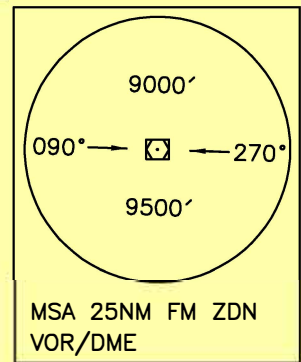
TWR 118.100, 119.400
121.900
ATIS 128.450

ZAHEDAN
RWY 35L/R
DANIB 1Y
DANIX 1Y

ALL DIRECTIONS ARE MAGNETIC.
LEVEL AND ELEVATIONS ARE IN FEET.
DISTANCES ARE IN NAUTICAL MILES.

CTR and ATZ class "D".

ZAHEDAN
VOR/DME
116.0 ZDN
CH 107X



DANIB 1Y ARR:

FM DANIB proceed to IAF (RDL 170-20 DME), MAG TR 315°, DIST 10 NM, at 20 DME turn left for 20 DME ARC to IAF, MNM ALT 10500 FT after 20 DME MNM ALT 10000 FT.

DANIX 1Y ARR:

FM DANIX proceed direct to IAF (RDL 170-20 DME), MAG TR 027°, DIST 11.8 NM, MNM ALT 10000 FT.

STANDARD ARRIVAL CHART-
INSTRUMENT (STAR)-ICAO

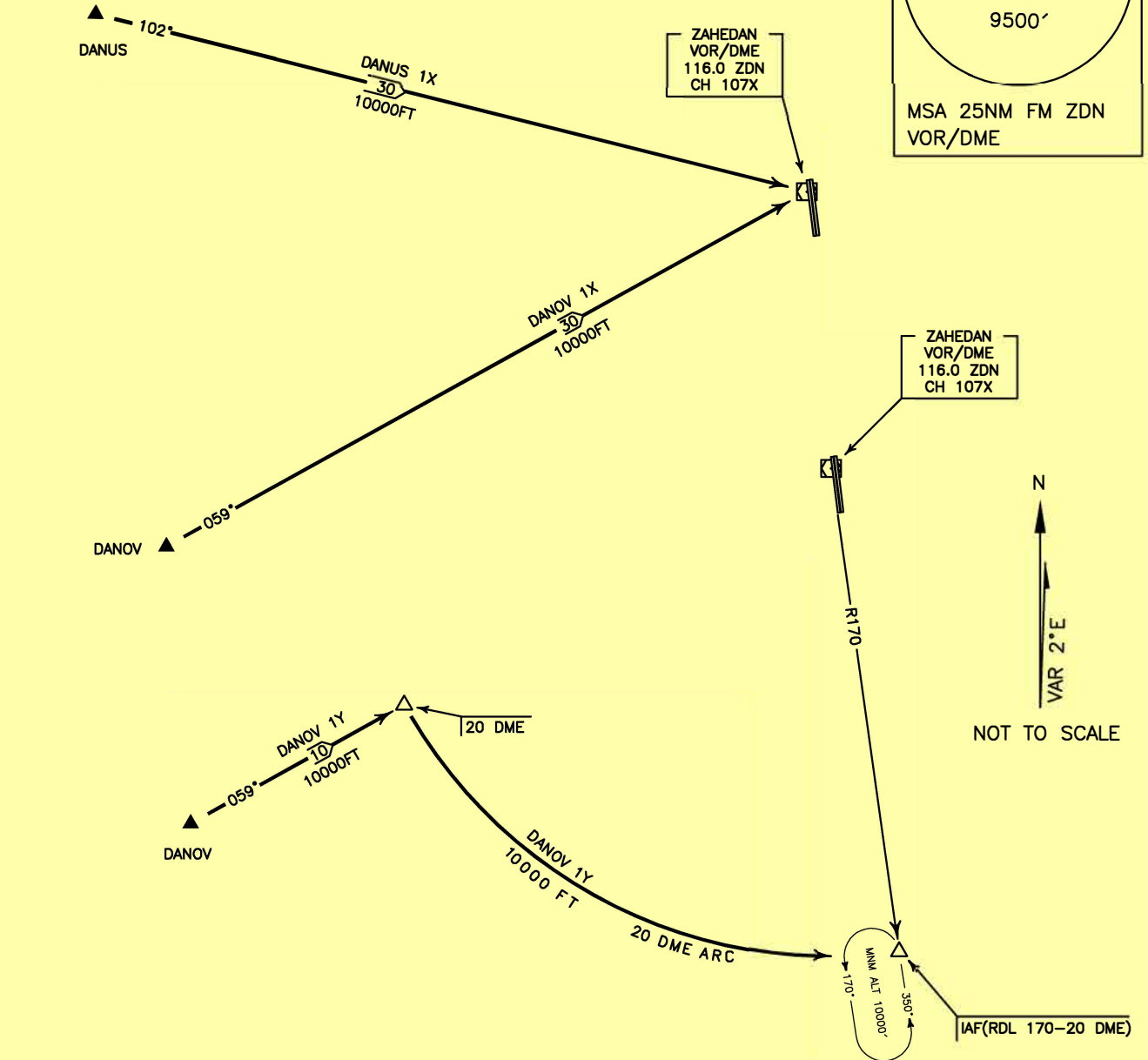
TRANSITION ALTITUDE
11000 FT

TWR 118.100, 119.400
121.900
ATIS 128.450

ZAHEDAN
RWY 35L/R, 17L/R
DANOV 1X/1Y
DANUS 1X

ALL DIRECTIONS ARE MAGNETIC.
LEVEL AND ELEVATIONS ARE IN FEET.
DISTANCES ARE IN NAUTICAL MILES.

CTR and ATZ class "D".



DANOV 1X ARR:

FM DANOV proceed to ZDN VOR/DME, MAG TR 059, DIST 30 NM, MNM ALT 10000 FT.

DANOV 1Y ARR:

FM DANOV proceed to IAF (RDL 170-20 DME), MAG TR 059°, DIST 10 NM, at 20 DME turn right for 20 DME arc to IAF. MNM ALT 10000 FT.

DANUS 1X ARR:

FM DANUS proceed to ZDN VOR/DME, MAG TR 102°, DIST 30 NM, MNM ALT 10000 FT.

STANDARD ARRIVAL CHART-
INSTRUMENT (STAR)-ICAO

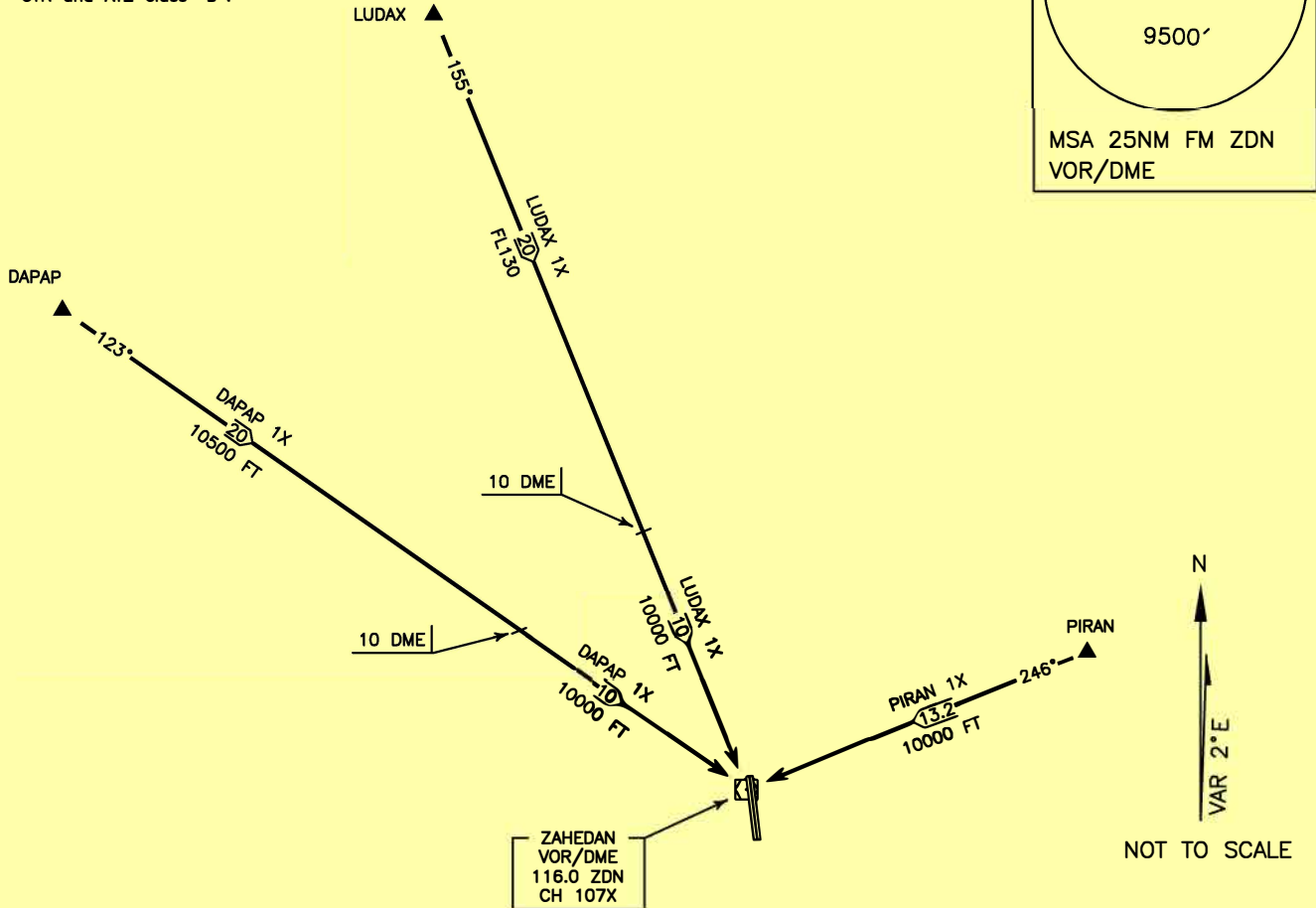
TRANSITION ALTITUDE
11000 FT

TWR 118.100, 119.400
121.900
ATIS 128.450

ZAHEDAN
RWY 35L/R, 17L/R
DAPAP 1X/ LUDAX 1X
PIRAN 1X

ALL DIRECTIONS ARE MAGNETIC.
LEVEL AND ELEVATIONS ARE IN FEET.
DISTANCES ARE IN NAUTICAL MILES.

CTR and ATZ class "D".



DAPAP 1X ARR:

FM DAPAP proceed to ZDN VOR/DME, MAG TR 123°, DIST 30 NM, MNM ALT 10500 FT, after 10 DME
MNM ALT 10000FT.

LUDAX 1X ARR:

FM LUDAX proceed to ZDN VOR/DME, MAG TR 155°, DIST 30 NM, MNM FL 130, after 10 DME,
MNM ALT 10000 FT.

PIRAN 1X ARR:

FM PIRAN proceed to ZDN VOR/DME, MAG TR 246°, DIST 13.2 NM, MNM ALT 10000 FT.

STANDARD ARRIVAL CHART-
INSTRUMENT (STAR)-ICAO

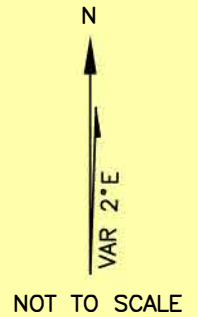
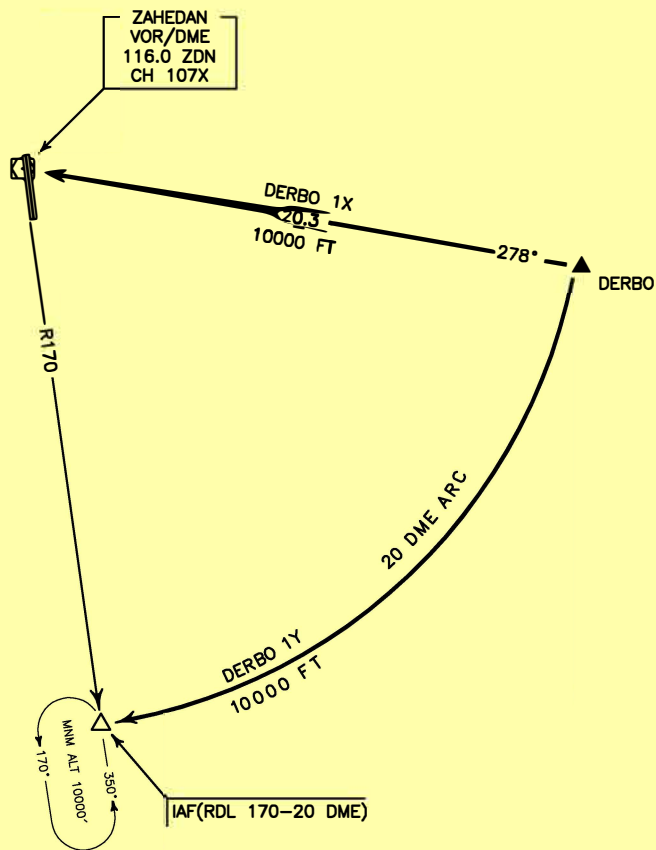
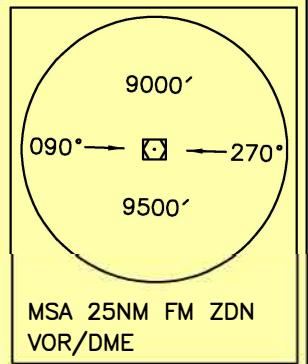
TRANSITION ALTITUDE
11000 FT

TWR 118.100, 119.400
121.900
ATIS 128.450

ZAHEDAN
RWY 35L/R, 17L/R
DERBO 1X/1Y

ALL DIRECTIONS ARE MAGNETIC.
LEVEL AND ELEVATIONS ARE IN FEET.
DISTANCES ARE IN NAUTICAL MILES.

CTR and ATZ class "D".



DERBO 1X ARR:

FM DERBO proceed to ZDN VOR/DME, MAG TR 278°, DIST 20.3 NM, MNM ALT 10000 FT.

DERBO 1Y ARR:

FM DERBO proceed to IAF (RDL 170-20 DME), at 20 DME turn left for 20 DME arc to IAF, MNM ALT 10000 FT.

STANDARD ARRIVAL CHART-
INSTRUMENT (STAR)-ICAO

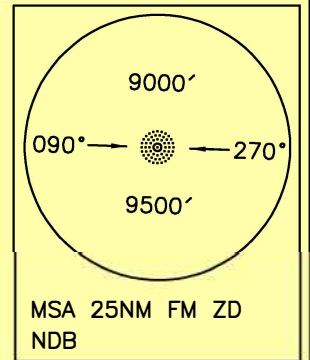
TRANSITION ALTITUDE
11000 FT

TWR 118.100, 119.400
121.900
ATIS 128.450

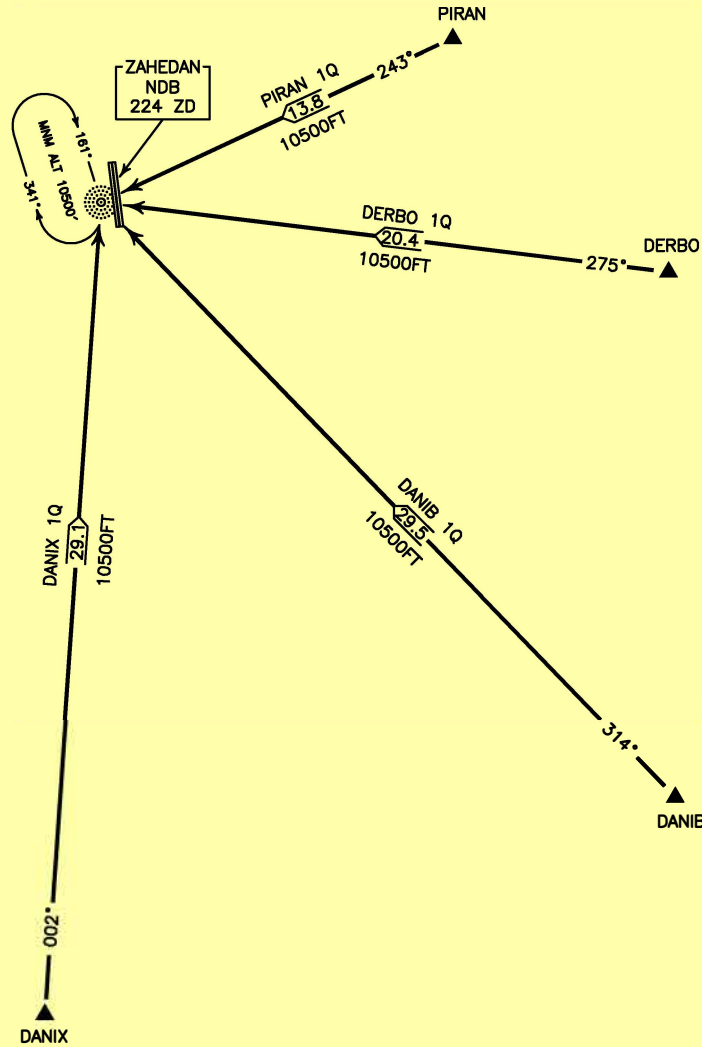
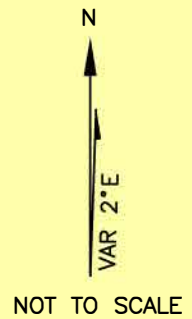
ZAHEDAN
RWY 35L/R, 17L/R
PIRAN 1Q, DERBO 1Q
DANIB 1Q, DANIX 1Q

ALL DIRECTIONS ARE MAGNETIC.
LEVEL AND ELEVATIONS ARE IN FEET.
DISTANCES ARE IN NAUTICAL MILES.

CTR and ATZ class "D".



ACTUAL DESCENT CLEARANCE
WILL BE AS DIRECTED BY ATC.



PIRAN 1Q ARR:

FM PIRAN proceed to overhead ZD NDB, MAG TR 243°, DIST 13.8 NM, MNM ALT 10500 FT.

DERBO 1Q ARR:

FM DERBO proceed to overhead ZD NDB, MAG TR 275°, DIST 20.4 NM, MNM ALT 10500 FT.

DANIB 1Q ARR:

FM DANIB proceed to overhead ZD NDB, MAG TR 314°, DIST 29.5 NM, MNM ALT 10500 FT.

DANIX 1Q ARR:

FM DANIX proceed to overhead ZD NDB, MAG TR 002°, DIST 29.1 NM, MNM ALT 10500 FT.

ISLAMIC REPUBLIC OF IRAN

STANDARD ARRIVAL CHART—
INSTRUMENT (STAR)—ICAO

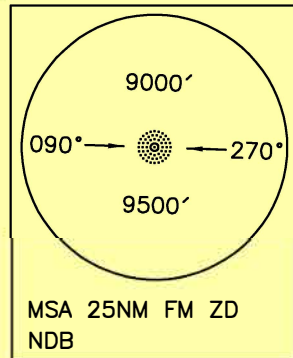
TRANSITION ALTITUDE
11000 FT

TWR 118.100, 119.400
121.900
ATIS 128.450

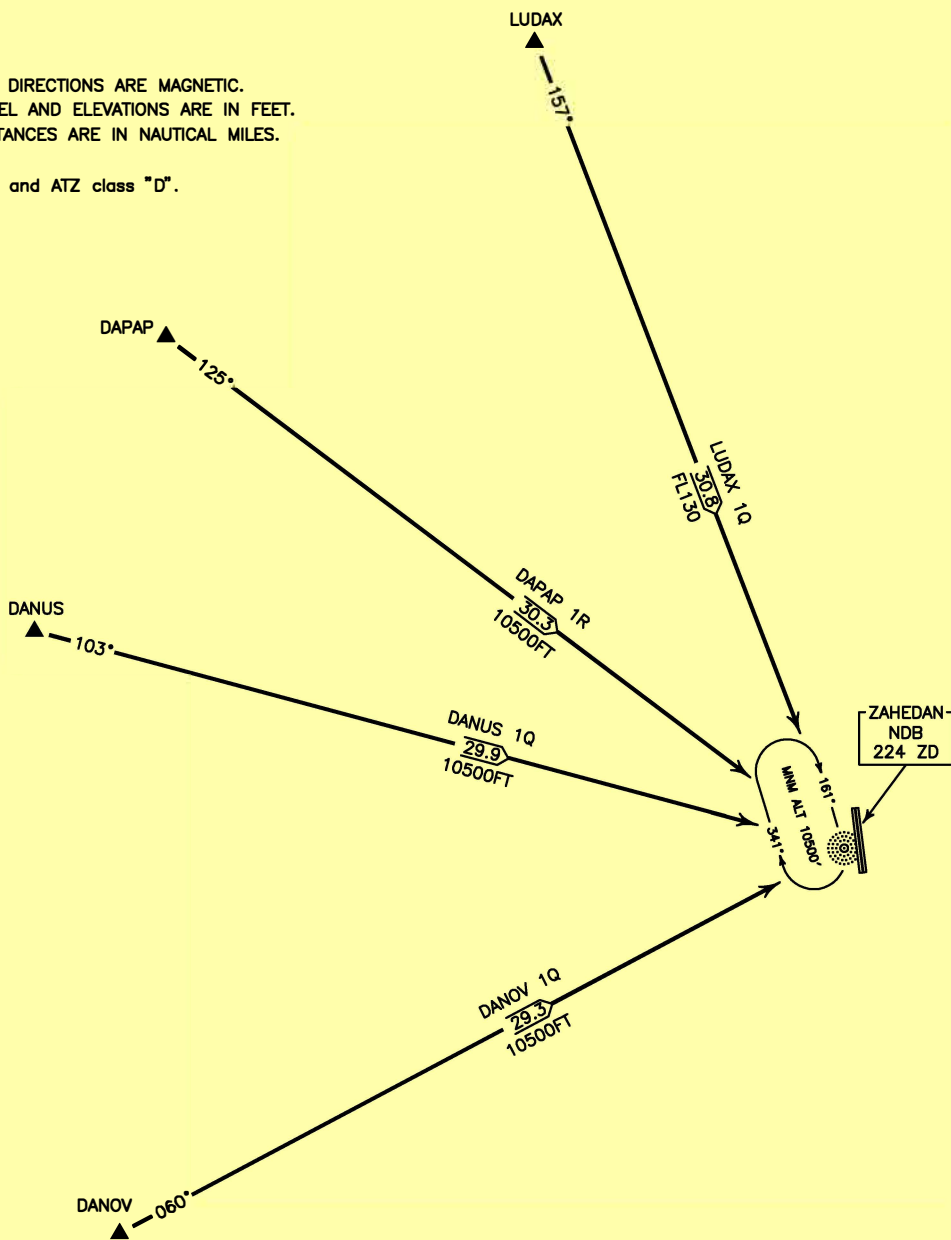
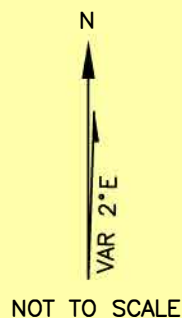
ZAHEDAN
RWY 35L/R, 17L/R
DANOV 1Q, DANUS 1Q
DAPAP 1R, LUDAX 1Q

ALL DIRECTIONS ARE MAGNETIC.
LEVEL AND ELEVATIONS ARE IN FEET.
DISTANCES ARE IN NAUTICAL MILES.

CTR and ATZ class "D".



ACTUAL DESCENT CLEARANCE
WILL BE AS DIRECTED BY ATC.



DANOV 1Q ARR:

FM DANOV proceed to overhead ZD NDB, MAG TR 060°, DIST 29.3 NM, MNM ALT 10500 FT.

DANUS 1Q ARR:

FM DANUS proceed to overhead ZD NDB, MAG TR 103°, DIST 29.9 NM, MNM ALT 10500 FT.

DAPAP 1R ARR:

FM DAPAP proceed to overhead ZD NDB, MAG TR 125°, DIST 30.3 NM, MNM ALT 10500 FT.

LUDAX 1Q ARR:

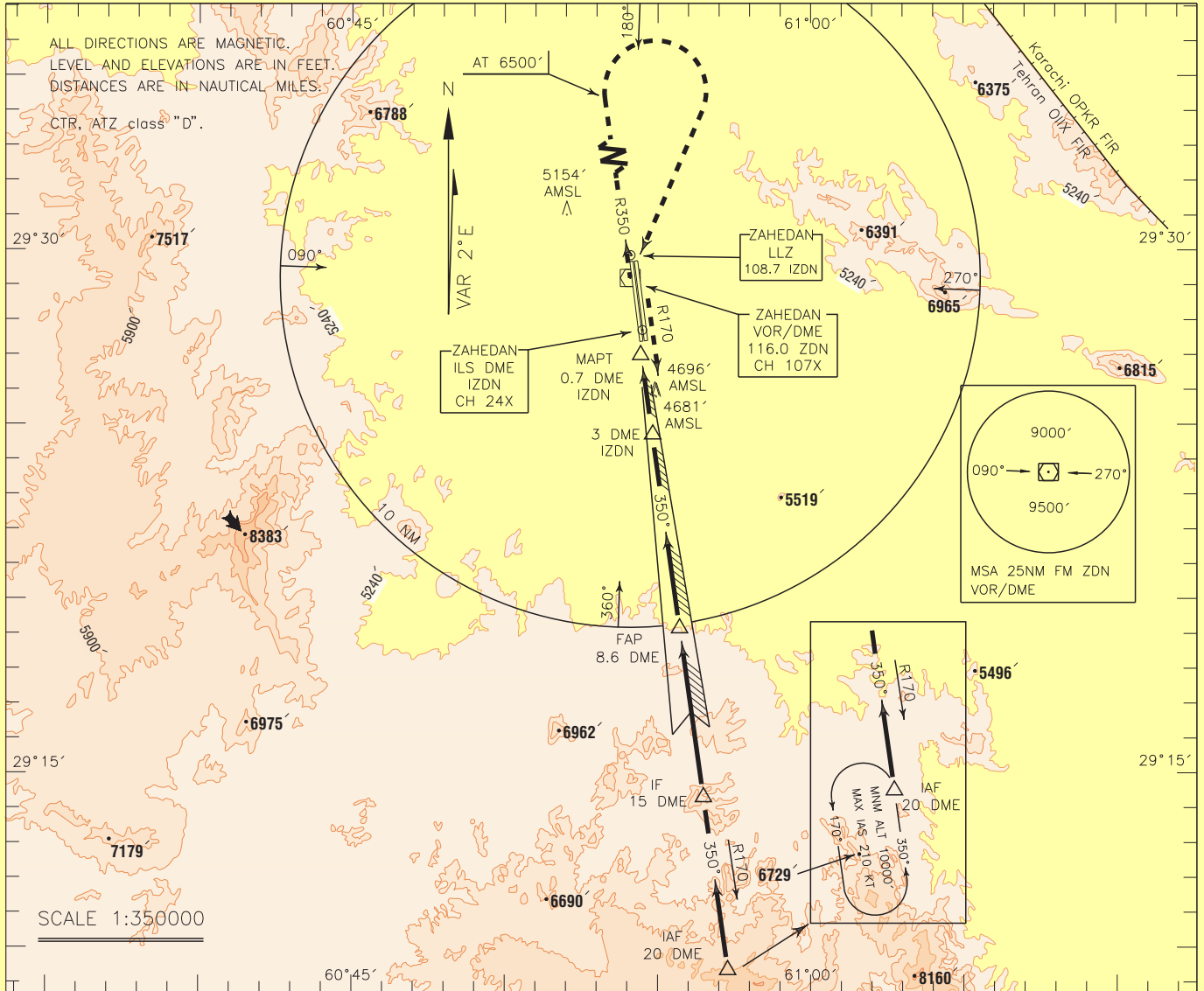
FM LUDAX proceed to overhead ZD NDB, MAG TR 157°, DIST 30.8 NM, MNM level FL 130.

INSTRUMENT
APPROACH
CHART-ICAO

AERODROME ELEV. 4523 FT
HEIGHTS RELATED TO
THR RWY 35L ELEV. 4522 FT

TWR 118.100, 119.400
121.900
ATIS 128.450

ZAHEDAN
ILS 1 RWY 35L
CAT A/B/C/D



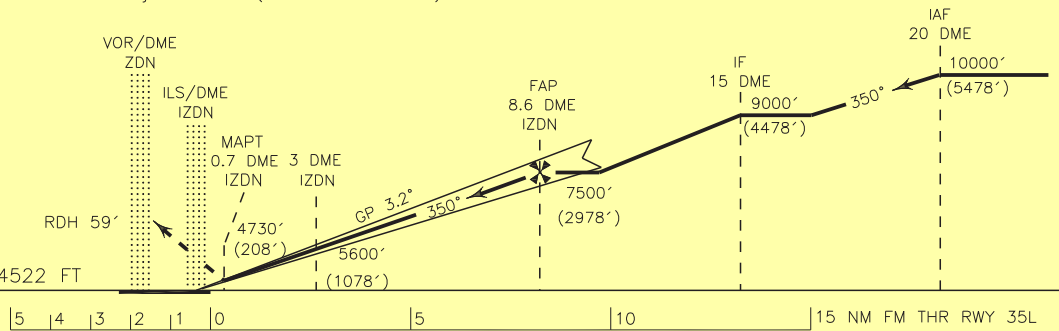
MISSED APPROACH: At 0.7 DME climb on MAG TR 350° (RDL 170) to ZDN VOR/DME, then climb on RDL 350 to 6500 FT, then turn right to cross overhead VOR/DME, then intercept RDL 170 to rejoin HLDG (RDL170-20 DME) at 10000 FT.

TA 11000'

NOTE:

MNM rate of climb
250 FT/NM.
MAX IAS 200kt.

THR RWY 35L ELEV. 4522 FT



NOTE:

- 1-Circling not authorized to the east of the aerodrome BTN RDL 020 and RDL 130 clockwise direction.
- 2-Contour intervals are to be selected at 660 FT (200 M).

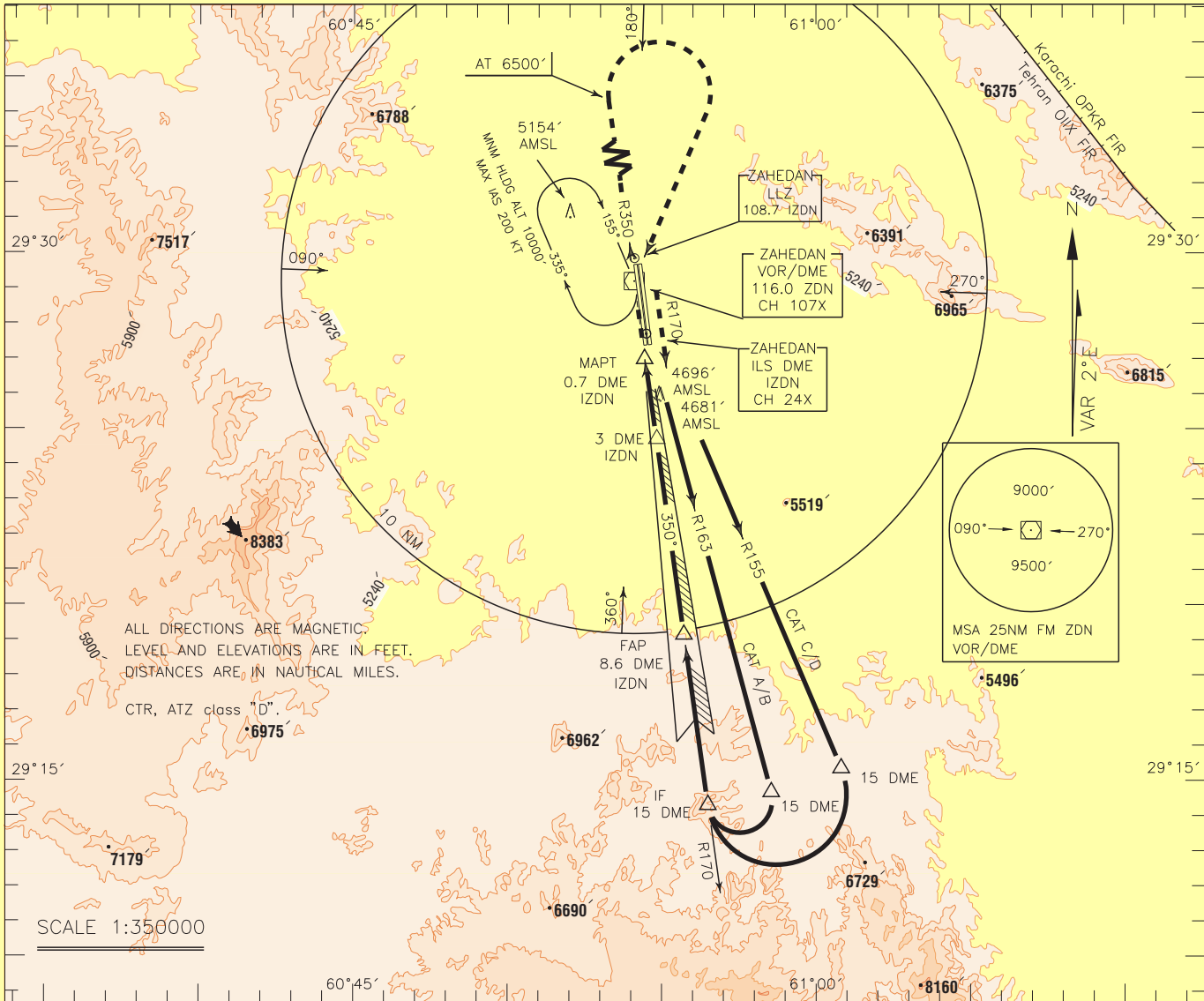
OCA(H)	A	B	C	D
Straight	4730' (208')			
GP INOP	-----			
Circling	5650' (1127')			

INSTRUMENT
APPROACH
CHART-ICAO

AERODROME ELEV. 4523 FT
HEIGHTS RELATED TO
THR RWY 35L ELEV. 4522 FT

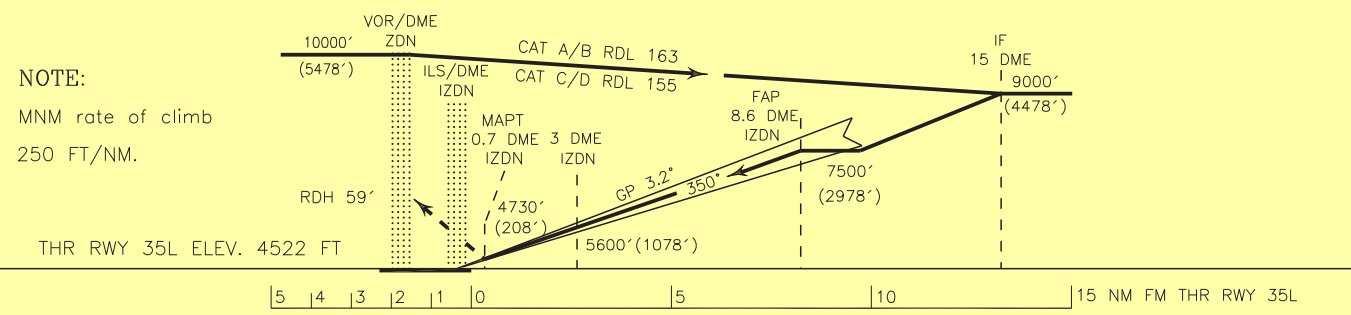
TWR 118.100, 119.400
121.900
ATIS 128.450

ZAHEDAN
ILS 2 RWY 35L
CAT A/B/C/D



MISSED APPROACH: At 0.7 DME climb on MAG TR 350° (RDL 170) to ZDN VOR/DME, then climb on RDL 350 to 6500 FT, then turn right to cross overhead ZDN VOR/DME, then intercept RDL 170 to rejoin HLDG (RDL170-20 DME) at 10000 FT. MAX IAS 200kt.

TA 11000'



NOTE:
MNM rate of climb
250 FT/NM.

OCA(H)	A	B	C	D
Straight		4730' (208')		
GP INOP		-----		
Circling		5650' (1127')		

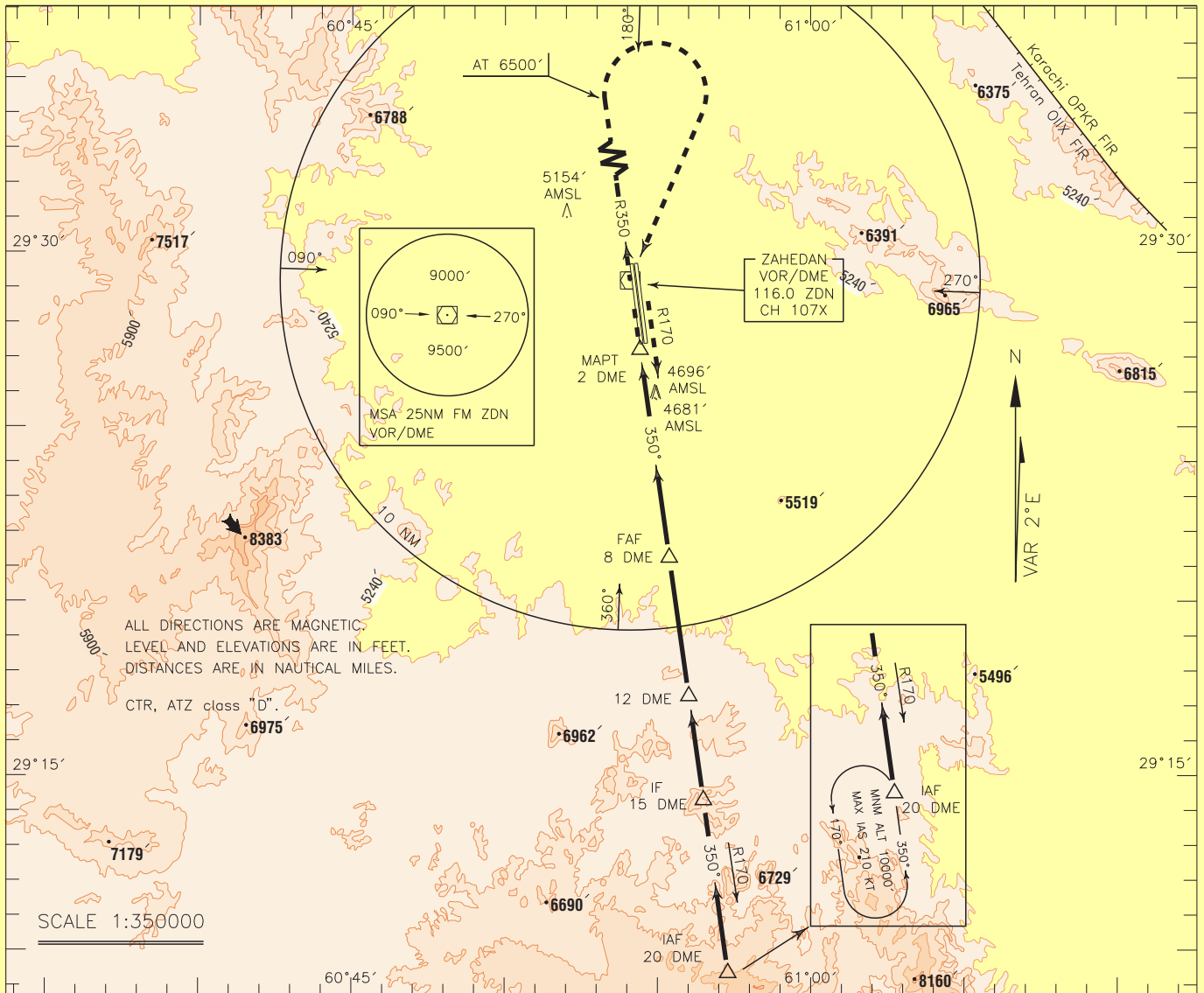
NOTE:
1-Circling not authorized to the east of the aerodrome (BTN RDL 020 and RDL 130 clockwise direction).
2-Contour intervals are to be selected at 660 FT (200 M).

INSTRUMENT
APPROACH
CHART-ICAO

AERODROME ELEV. 4523 FT
HEIGHTS RELATED TO
AERODROME ELEVATION

TWR 118.100, 119.400
121.900
ATIS 128.450

ZAHEDAN
VOR/DME 1 RWY 35L/R
CAT A/B/C/D

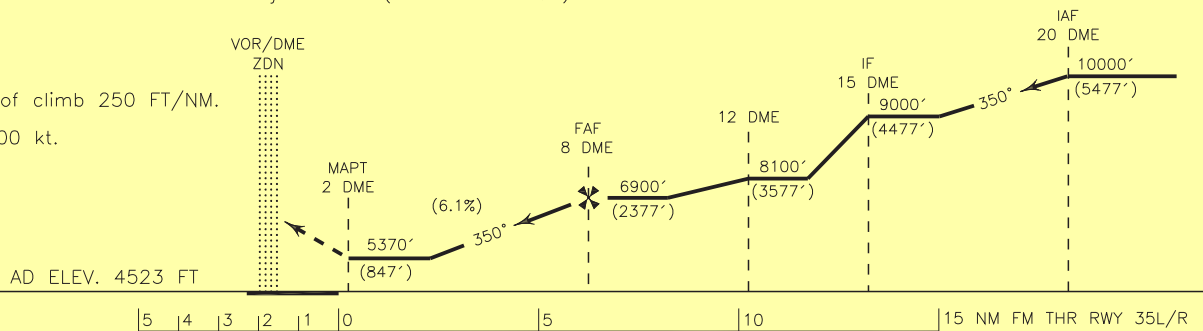


MISSED APPROACH: At 2 DME climb on MAG TR 350° (RDL 170) to ZDN VOR/DME, then climb on RDL 350 to 6500 FT, then turn right to cross overhead VOR/DME, then intercept RDL 170 to rejoin HLDG (RDL170-20 DME) at 10000 FT.

TA 11000'

NOTE:

MNM rate of climb 250 FT/NM.
MAX IAS 200 kt.



NOTE:

- 1-Circling not authorized to the east of the aerodrome (BTN RDL 020 and RDL 130 clockwise direction.)
- 2-Contour intervals are to be selected at 660 FT (200 M).

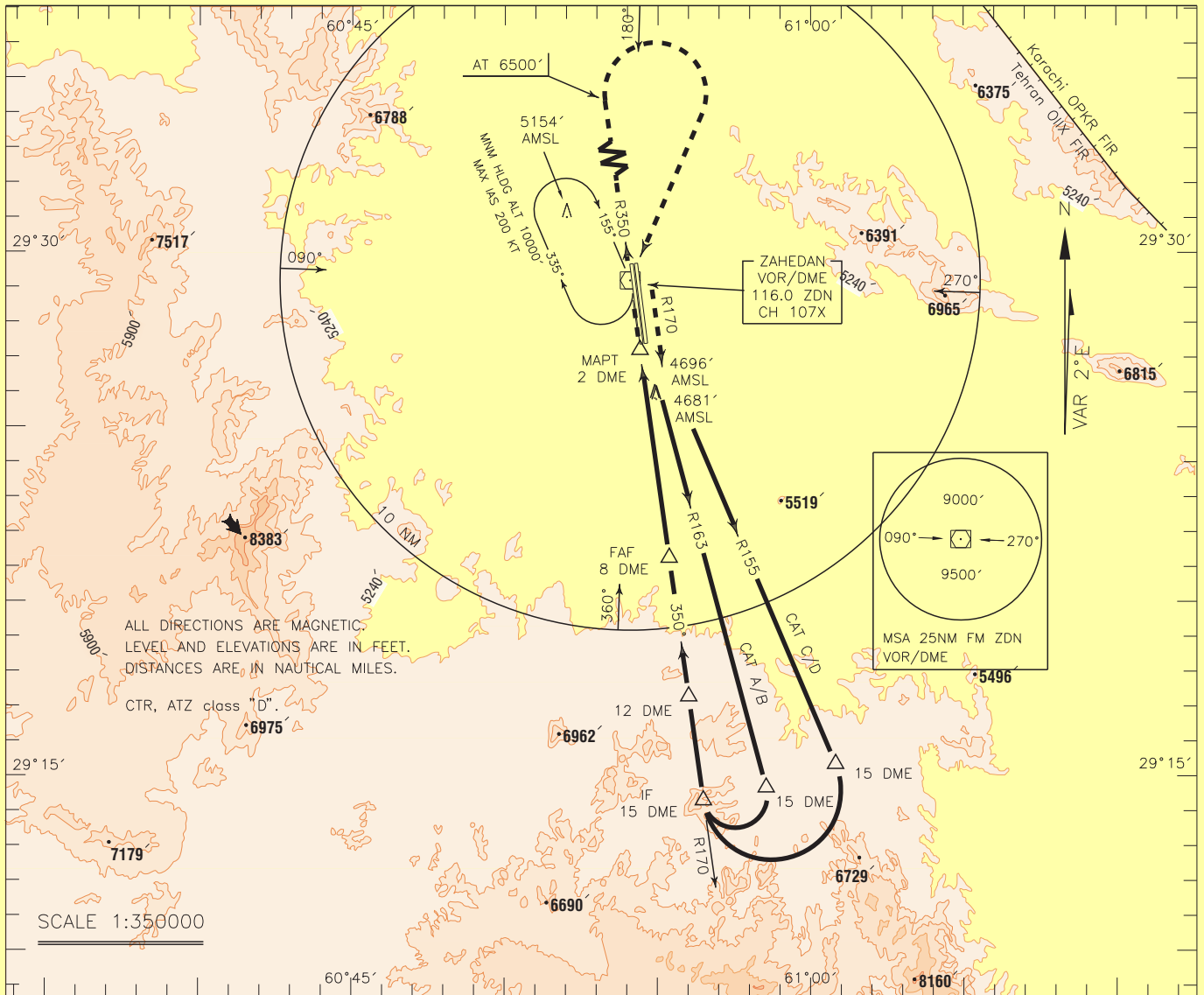
OCA(H)	A	B	C	D
Straight		5370' (847')		
Circling		5650' (1127')		

INSTRUMENT
APPROACH
CHART-ICAO

AERODROME ELEV. 4523 FT
HEIGHTS RELATED TO
AERODROME ELEVATION

TWR 118.100, 119.400
121.900
ATIS 128.450

ZAHEDAN
VOR/DME 2 RWY 35L/R
CAT A/B/C/D

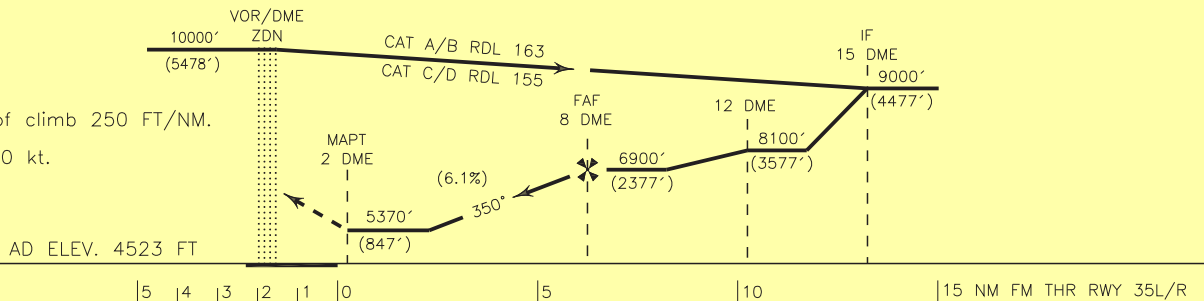


MISSED APPROACH: At 2 DME climb on MAG TR 350° (RDL 170) to ZDN VOR/DME, then climb on RDL 350 to 6500 FT, then turn right to cross overhead VOR/DME, then intercept RDL 170 to rejoin HLDG (RDL170-20 DME) at 10000 FT.

TA 11000'

NOTE:

MNM rate of climb 250 FT/NM.
MAX IAS 200 kt.



NOTE:

- 1-Circling not authorized to the east of the aerodrome (BTN RDL 020 and RDL 130 clockwise direction).
- 2-Contour intervals are to be selected at 660 FT (200 M).

OCA(H)	A	B	C	D
Straight		5370'(847')		
Circling		5650'(1127')		