

STANDARD ARRIVAL CHART-
INSTRUMENT (STAR)-ICAO

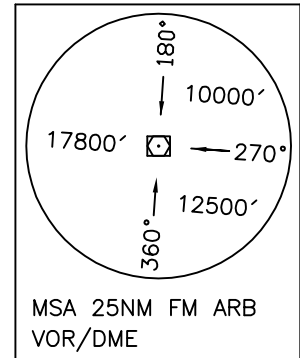
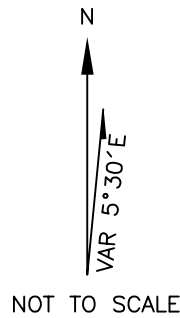
TRANSITION ALTITUDE
11500 FT

TWR 118.150, 121.900
ATIS 126.650

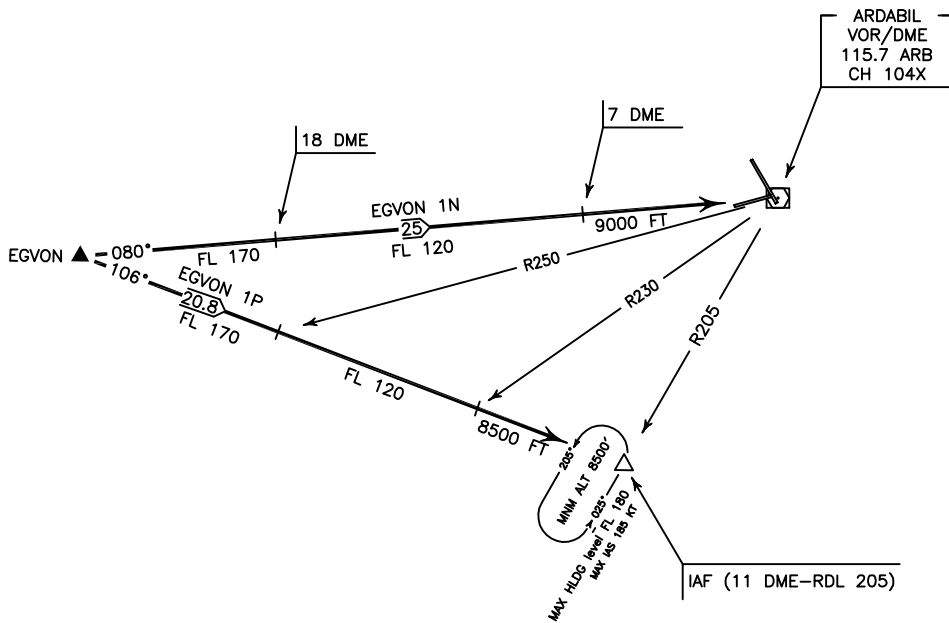
ARDABIL
RWY 15/33
EGVON 1N/1P

ALL DIRECTIONS ARE MAGNETIC,
LEVEL AND ELEVATIONS ARE IN FEET,
DISTANCES ARE IN NAUTICAL MILES.

ATZ class "D".



ACTUAL DESCENT CLEARANCE
WILL BE AS DIRECTED BY ATC.



EGVON 1N ARR:

FM EGVON proceed to ARB VOR/DME, MAG TR 080°, DIST 25 NM, MNM FL 170, at 18 DME MNM FL 120, at 7 DME MNM level 9000 FT.

EGVON 1P ARR:

FM EGVON proceed to IAF (11 DME-RDL 205), MAG TR 106°, DIST 20.8 NM, MNM FL 170, after crossing RDL 250 MNM FL 120, after crossing RDL 230 MNM level 8500 FT.