

STANDARD ARRIVAL CHART-
INSTRUMENT (STAR)-ICAO

TRANSITION ALTITUDE
11500 FT

TWR 118.150, 121.900
ATIS 126.650

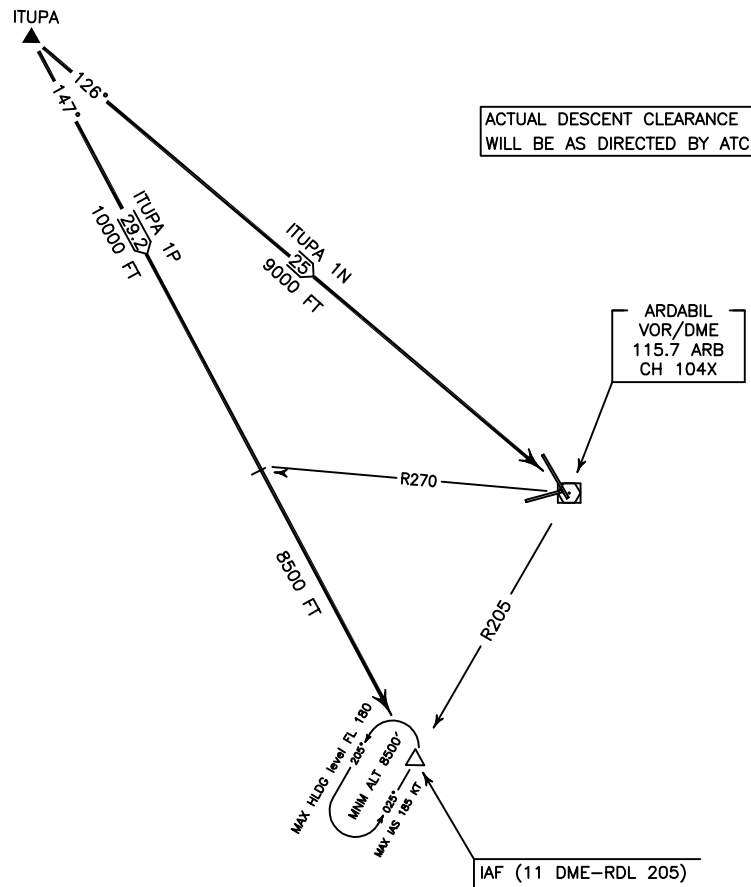
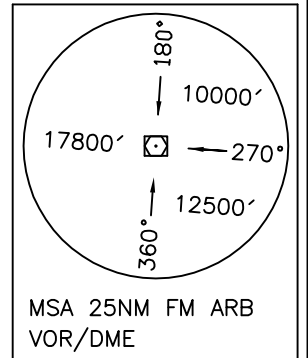
ARDABIL
RWY 15/33
ITUPA 1N/1P

ALL DIRECTIONS ARE MAGNETIC,
LEVEL AND ELEVATIONS ARE IN FEET,
DISTANCES ARE IN NAUTICAL MILES.

ATZ class "D".



NOT TO SCALE



ITUPA 1N ARR:

FM ITUPA proceed to ARB VOR/DME, MAG TR 126°, DIST 25 NM, MNM level 9000 FT.

ITUPA 1P ARR:

FM ITUPA proceed to IAF (11 DME-RDL 205), MAG TR 147°, DIST 29.2 NM, MNM ALT 10000 FT,
after crossing RDL 270 MNM level 8500 FT.