

STANDARD ARRIVAL CHART-  
INSTRUMENT (STAR)-ICAO

TRANSITION ALTITUDE  
11500 FT

TWR 118.150, 121.900  
ATIS 126.650

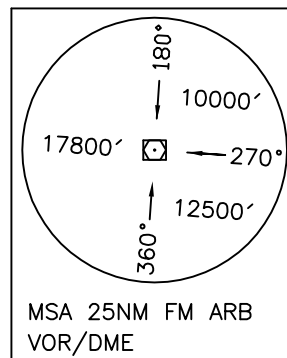
ARDABIL  
RWY 15/33  
EGVON 1Q  
ITUPA 1Q

ALL DIRECTIONS ARE MAGNETIC,  
LEVEL AND ELEVATIONS ARE IN FEET,  
DISTANCES ARE IN NAUTICAL MILES.

ATZ class "D".

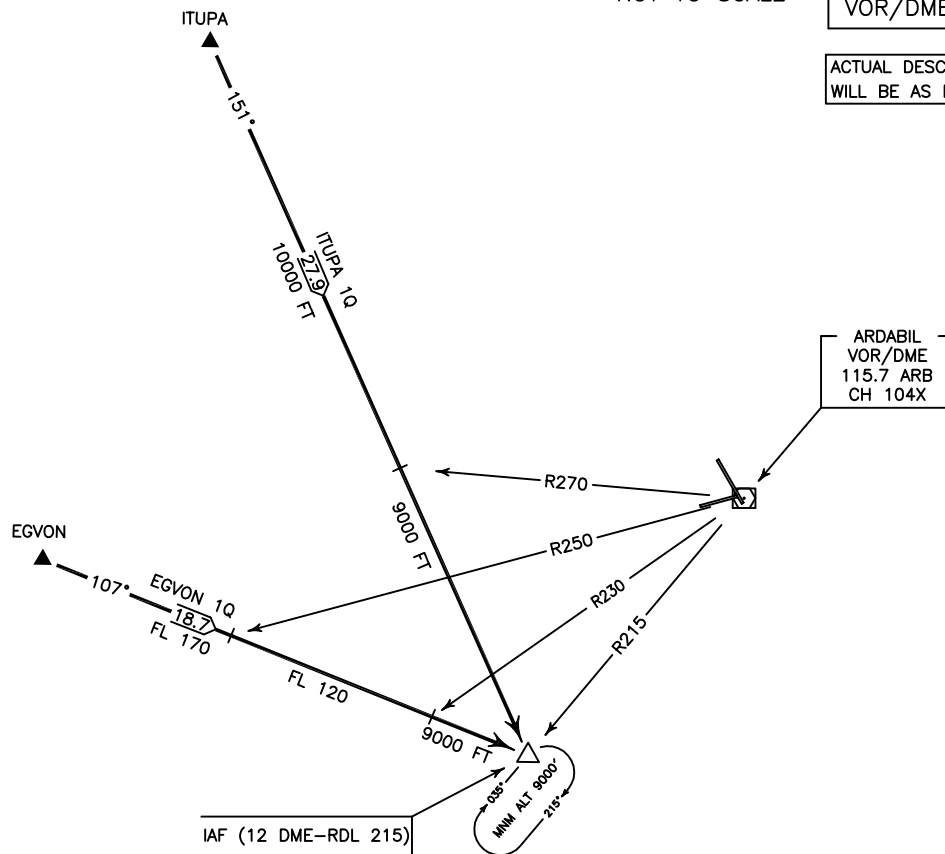


NOT TO SCALE



MSA 25NM FM ARB  
VOR/DME

ACTUAL DESCENT CLEARANCE  
WILL BE AS DIRECTED BY ATC.



**EGVON 1Q ARR:**

FM EGVON proceed to IAF (12 DME-RDL 215), MAG TR 107°, DIST 18.7 NM, MNM FL 170, after crossing RDL 250 MNM FL 120, after crossing RDL 230 MNM 9000 FT.

**ITUPA 1Q ARR:**

FM ITUPA proceed to IAF (12 DME-RDL 215), MAG TR 151°, DIST 27.9 NM, MNM ALT 10000 FT, after crossing RDL 270 MNM 9000 FT.