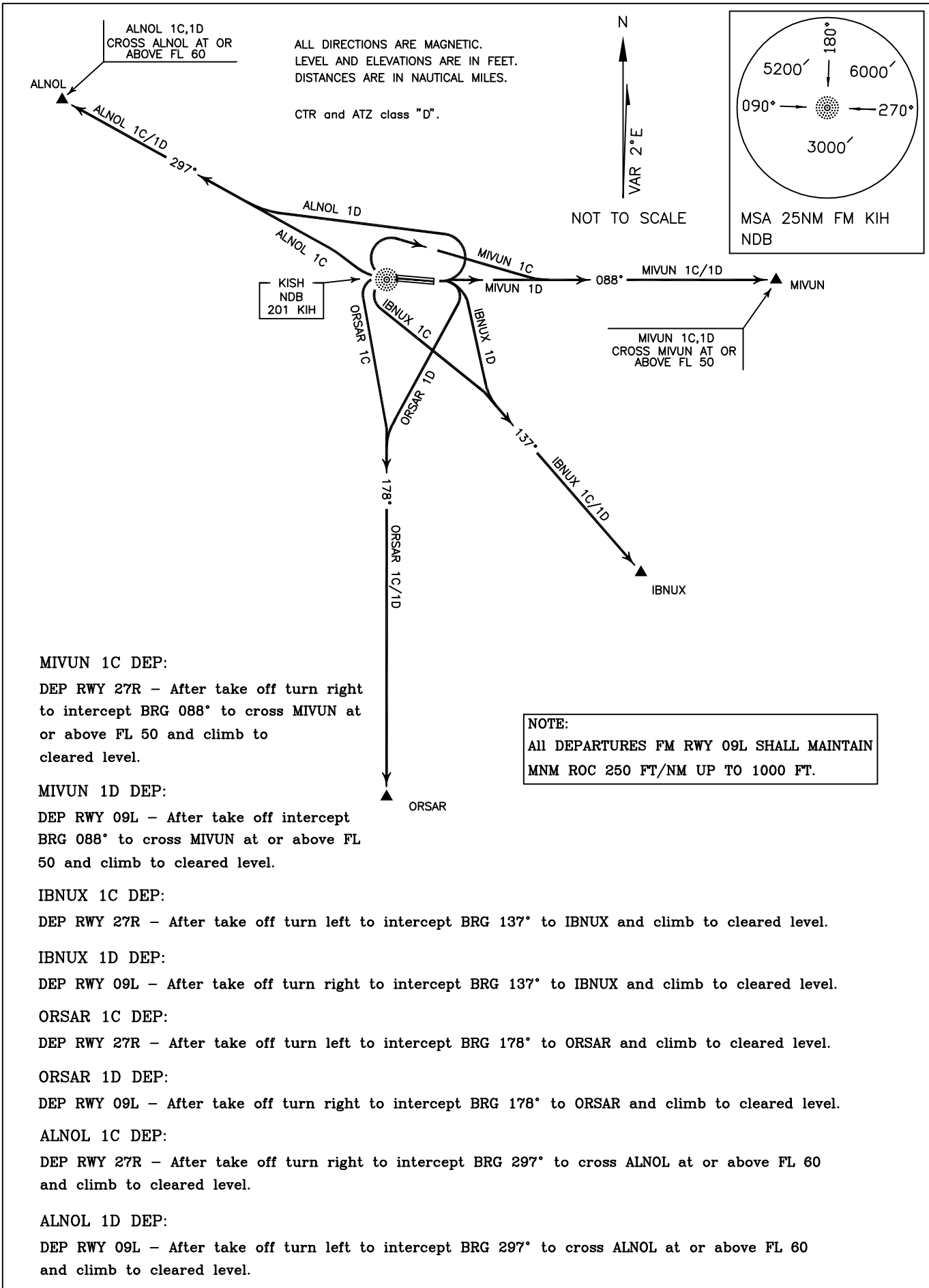


STANDARD DEPARTURE CHART-
INSTRUMENT (SID)-ICAO

TRANSITION ALTITUDE
3000 FT

TWR 118.450, 119.600
121.675
ATIS 128.000

KISH ISLAND/KISH
RWY 27R, 09L
MIVUN 1C/1D, IBNUX 1C/1D
ORSAR 1C/1D, ALNOL 1C/1D



MIVUN 1C DEP:

DEP RWY 27R - After take off turn right to intercept BRG 088° to cross MIVUN at or above FL 50 and climb to cleared level.

MIVUN 1D DEP:

DEP RWY 09L - After take off intercept BRG 088° to cross MIVUN at or above FL 50 and climb to cleared level.

IBNUX 1C DEP:

DEP RWY 27R - After take off turn left to intercept BRG 137° to IBNUX and climb to cleared level.

IBNUX 1D DEP:

DEP RWY 09L - After take off turn right to intercept BRG 137° to IBNUX and climb to cleared level.

ORSAR 1C DEP:

DEP RWY 27R - After take off turn left to intercept BRG 178° to ORSAR and climb to cleared level.

ORSAR 1D DEP:

DEP RWY 09L - After take off turn right to intercept BRG 178° to ORSAR and climb to cleared level.

ALNOL 1C DEP:

DEP RWY 27R - After take off turn right to intercept BRG 297° to cross ALNOL at or above FL 60 and climb to cleared level.

ALNOL 1D DEP:

DEP RWY 09L - After take off turn left to intercept BRG 297° to cross ALNOL at or above FL 60 and climb to cleared level.