

STANDARD ARRIVAL CHART-
INSTRUMENT (STAR)-ICAO

TRANSITION ALTITUDE
3000 FT

TWR 118.450, 119.600
121.675
ATIS 128.000

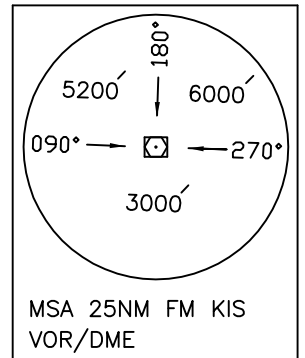
KISH ISLAND/KISH
RWY 27R, 09L
MIVUN 1P/1Q/1V
IBNUX 1P/1Q/1V

ALL DIRECTIONS ARE MAGNETIC.
LEVEL AND ELEVATIONS ARE IN FEET.
DISTANCES ARE IN NAUTICAL MILES.

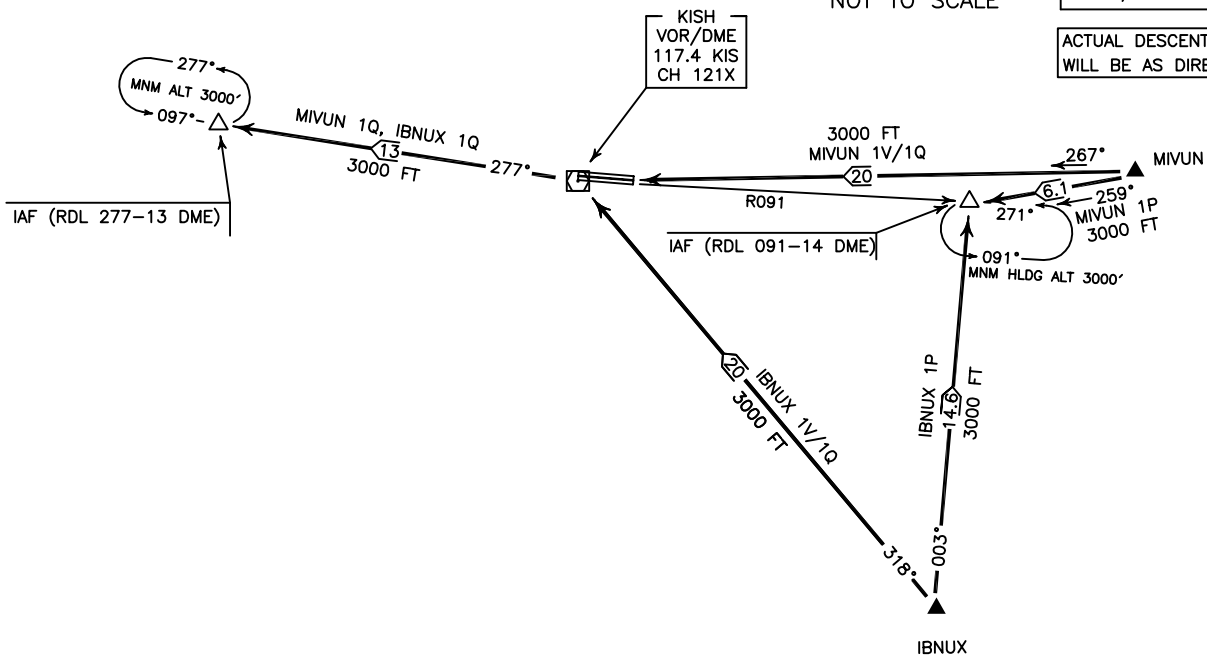
CTR and ATZ class "D".



NOT TO SCALE



ACTUAL DESCENT CLEARANCE
WILL BE AS DIRECTED BY ATC.



MIVUN 1P ARR:

FM MIVUN proceed to IAF 27L (RDL 091-14 DME), MAG TR 259°, DIST 6.1 NM, MNM ALT 3000 FT.

MIVUN 1Q ARR:

FM MIVUN proceed to IAF (RDL 277-13 DME) via overhead KIS VOR/DME, MAG TR 267° up to overhead, DIST 20 NM, then MAG TR 277° to IAF, DIST 13 NM, MNM ALT 3000 FT.

MIVUN 1V ARR:

FM MIVUN proceed to KIS VOR/DME, MAG TR 267°, DIST 20 NM, MNM ALT 3000 FT.

IBNUX 1P ARR:

FM IBNUX proceed to IAF 27L (RDL 091-14 DME), MAG TR 003°, DIST 14.6 NM, MNM ALT 3000 FT.

IBNUX 1Q ARR:

FM IBNUX proceed to IAF 09R (RDL 277-13 DME) via overhead KIS VOR/DME, MAG TR 318° up to overhead, DIST 20 NM, then MAG TR 277° to IAF, DIST 13 NM, MNM ALT 3000 FT.

IBNUX 1V ARR:

FM IBNUX proceed to KIS VOR/DME, MAG TR 318°, DIST 20 NM, MNM ALT 3000 FT.