

STANDARD ARRIVAL CHART-
INSTRUMENT (STAR)-ICAO

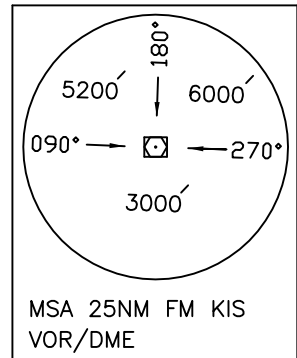
TRANSITION ALTITUDE
3000 FT

TWR 118.450, 119.600
121.675
ATIS 128.000

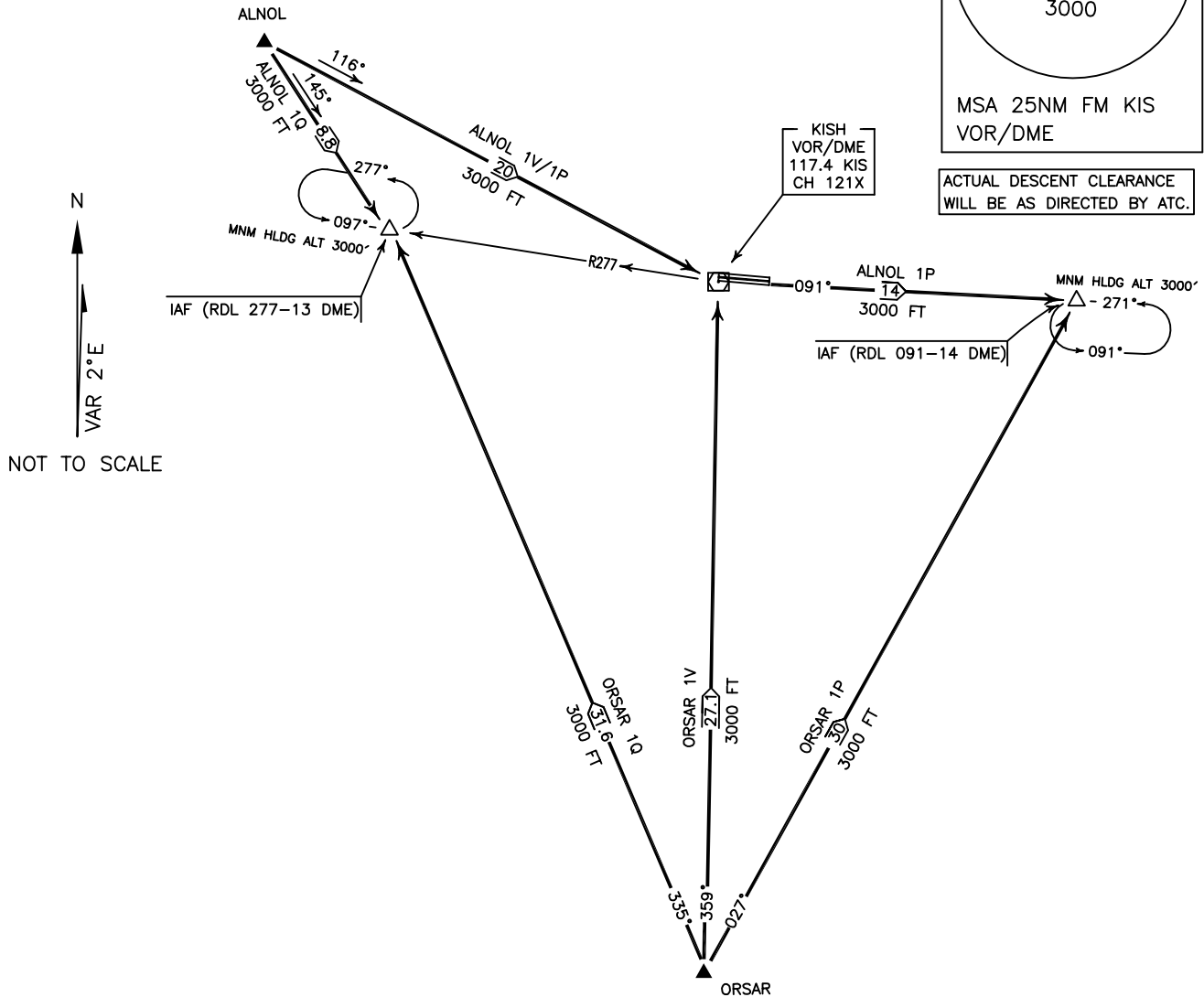
KISH ISLAND/KISH
RWY 27R, 09L
ORSAR 1P/1Q/1V
ALNOL 1P/1Q/1V

ALL DIRECTIONS ARE MAGNETIC.
LEVEL AND ELEVATIONS ARE IN FEET.
DISTANCES ARE IN NAUTICAL MILES.

CTR and ATZ class "D".



ACTUAL DESCENT CLEARANCE
WILL BE AS DIRECTED BY ATC.



ORSAR 1P ARR:

FM ORSAR proceed to IAF (RDL 091-14 DME), MAG TR 027°, DIST 30 NM, MNM ALT 3000 FT.

ORSAR 1Q ARR:

FM ORSAR proceed to IAF (RDL 277-13 DME), MAG TR 335°, DIST 31.6 NM, MNM ALT 3000 FT.

ORSAR 1V ARR:

FM ORSAR proceed to KIS VOR/DME, MAG TR 359°.DIST 27.1 NM, MNM ALT 3000 FT.

ALNOL 1P ARR:

FM ALNOL proceed to IAF (RDL 091-14 DME) via overhead KIS VOR/DME, MAG TR 116° up to overhead, DIST 20 NM, then MAG TR 091° to IAF, DIST 14 NM, MNM ALT 3000 FT.

ALNOL 1Q ARR:

FM ALNOL proceed to IAF (RDL 277-13 DME), MAG TR 145°, DIST 8.8 NM, MNM ALT 3000 FT.

ALNOL 1V ARR:

FM ALNOL proceed to KIS VOR/DME, MAG TR 116°, DIST 20 NM, MNM ALT 3000 FT.