

STANDARD ARRIVAL CHART-
INSTRUMENT (STAR)-ICAO

TRANSITION ALTITUDE
3000 FT

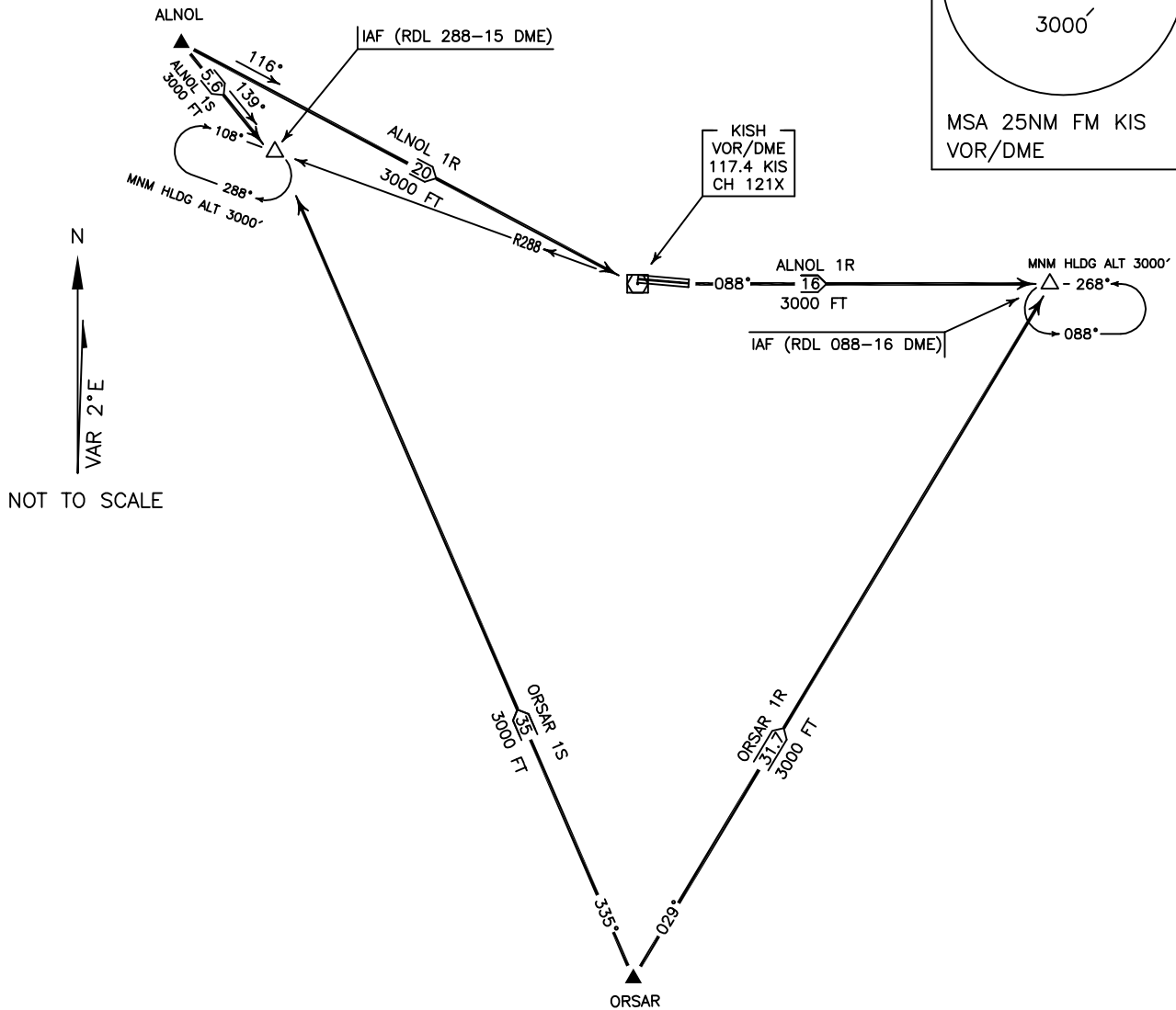
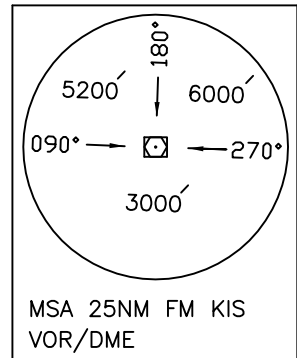
TWR 118.450, 119.600
121.675
ATIS 128.000

KISH ISLAND/KISH
RWY 27R, 09L
ORSAR 1R/1S
ALNOL 1R/1S

ACTUAL DESCENT CLEARANCE
WILL BE AS DIRECTED BY ATC.

ALL DIRECTIONS ARE MAGNETIC.
LEVEL AND ELEVATIONS ARE IN FEET.
DISTANCES ARE IN NAUTICAL MILES.

CTR and ATZ class "D".



ORSAR 1R ARR:

FM ORSAR proceed to IAF (RDL 088-16 DME), MAG TR 029°, DIST 31.7 NM, MNM ALT 3000 FT.

ORSAR 1S ARR:

FM ORSAR proceed to IAF (RDL 288-15 DME), MAG TR 335°, DIST 35 NM, MNM ALT 3000 FT.

ALNOL 1R ARR:

FM ALNOL proceed to IAF (RDL 088-16 DME), via overhead KIS VOR/DME, MAG TR 116° up to overhead, DIST 20 NM, then MAG TR 088° to IAF, DIST 16 NM, MNM ALT 3000 FT.

ALNOL 1S ARR:

FM ALNOL proceed to IAF (RDL 288-15 DME), MAG TR 139°, DIST 5.6 NM, MNM ALT 3000 FT.