

STANDARD ARRIVAL CHART-
INSTRUMENT (STAR)-ICAO

TRANSITION ALTITUDE
3000 FT

TWR 118.450, 119.600
121.675
ATIS 128.000

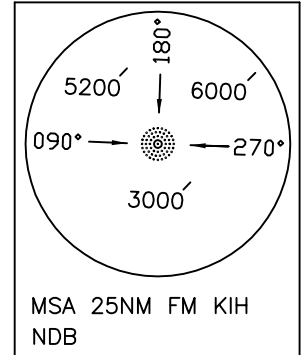
KISH ISLAND/KISH
RWY 27R, 09L
MIVUN 1N, IBNUX 1N
ORSAR 1N, ALNOL 1N

ALL DIRECTIONS ARE MAGNETIC.
LEVEL AND ELEVATIONS ARE IN FEET.
DISTANCES ARE IN NAUTICAL MILES.

CTR and ATZ class "D".

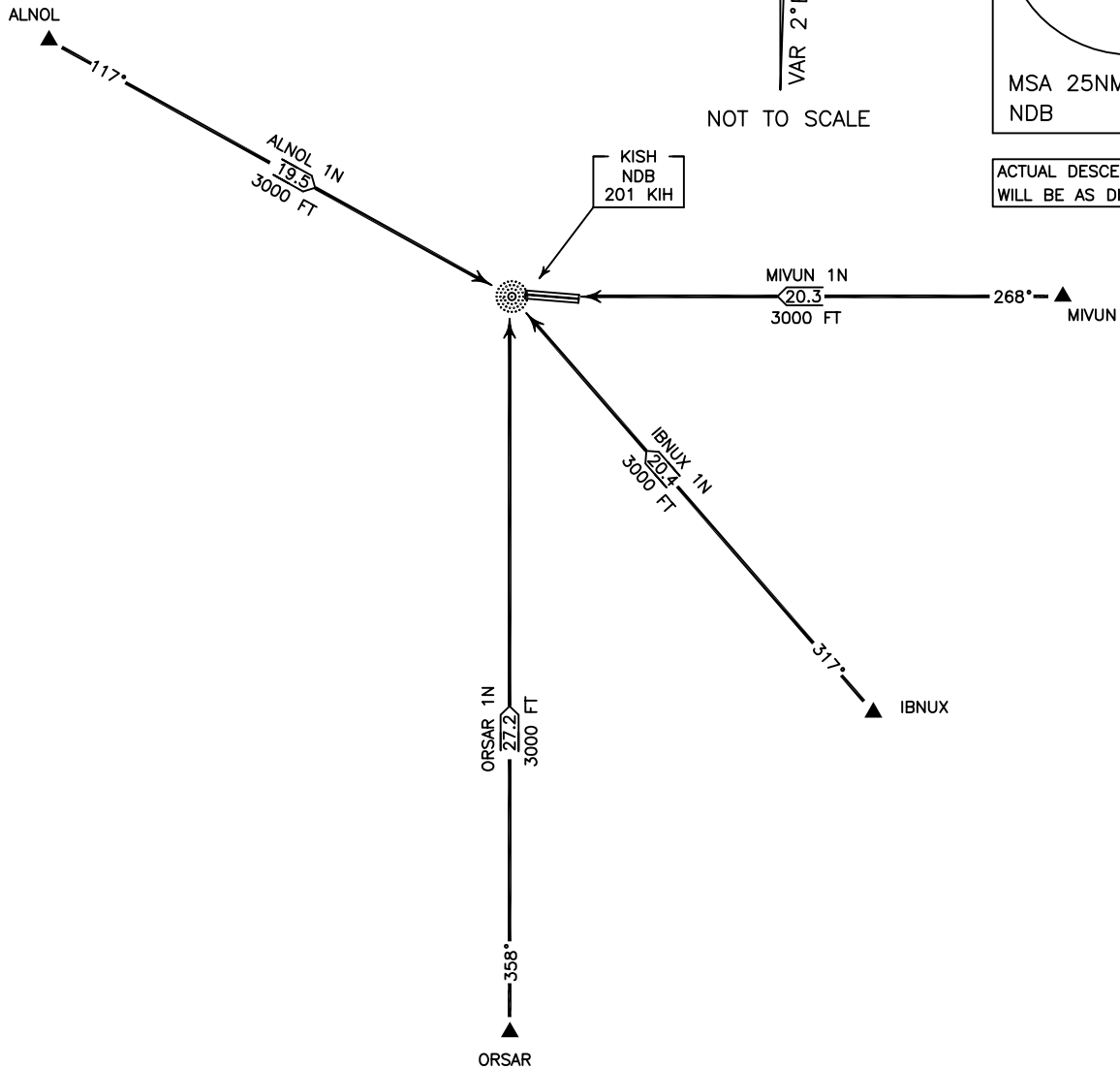


NOT TO SCALE



MSA 25NM FM KIH
NDB

ACTUAL DESCENT CLEARANCE
WILL BE AS DIRECTED BY ATC.



MIVUN 1N ARR:

FM MIVUN proceed to KIH NDB, MAG TR 268°, DIST 20.3 NM, MNM ALT 3000 FT.

IBNUX 1N ARR:

FM IBNUX proceed to KIH NDB, MAG TR 317°, DIST 20.4 NM, MNM ALT 3000 FT.

ORSAR 1N ARR:

FM ORSAR proceed to KIH NDB, MAG TR 358°, DIST 27.2 NM, MNM ALT 3000 FT.

ALNOL 1N ARR:

FM ALNOL proceed to KIH NDB, MAG TR 117°, DIST 19.5 NM, MNM ALT 3000 FT.