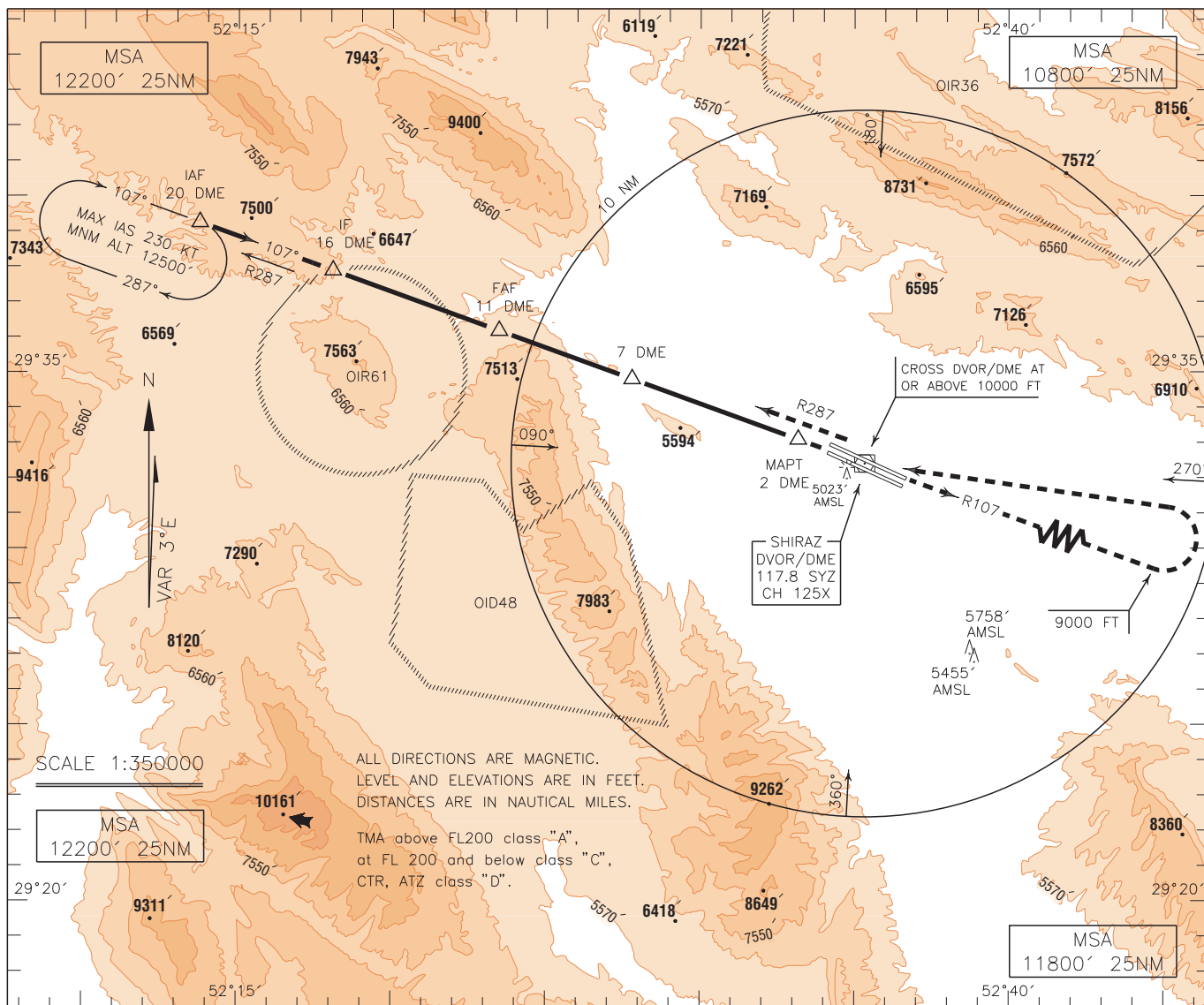


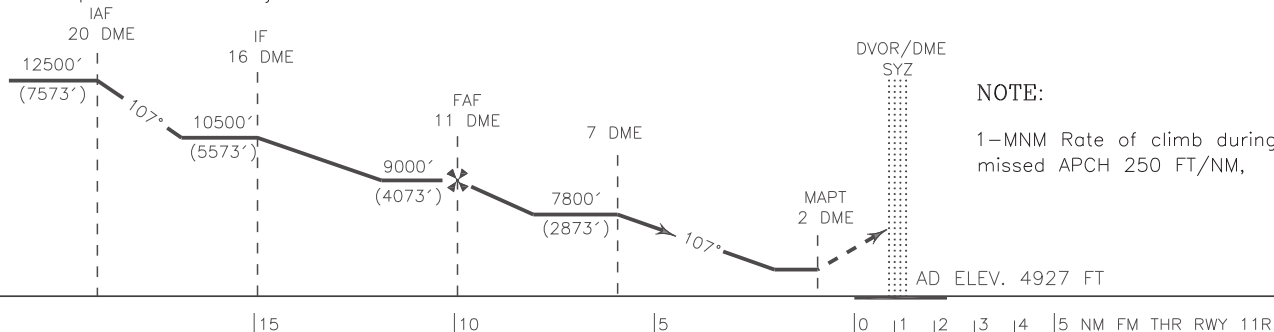
INSTRUMENT AERODROME ELEV. 4927 FT  
APPROACH HEIGHTS RELATED TO AERODROME ELEVATION

RADAR 119.000-125.400  
APP 119.000-125.400  
TWR 118.100  
GND 121.900  
ATIS 127.000

SHIRAZ/SHAHID DASTGHAIB  
CIRCLING VOR/DME 2  
CAT A/B/C/D



MISSED APPROACH: At 2 DME climb straight to SYZ DVOR/DME, after passing overhead SYZ DVOR/DME continue climb on RDL 107 to 9000 FT, then turn left cross overhead SYZ DVOR/DME at or above 10000FT, then intercept RDL 287 to rejoin HLDG at 12500 FT. TA 13000'



NOTE:  
1-MNM Rate of climb during missed APCH 250 FT/NM,

NOTE:  
1- Circle to land not authorized to the north of AD for ACFT CAT C/D.  
2- Contour intervals are to be selected at 990 FT (300 M).

OCA(H)	A	B	C	D
Straight				
Circling	5600'(673')		6200'(1273')	6500'(1573')