

STANDARD DEPARTURE CHART—  
INSTRUMENT (SID)—ICAO

TRANSITION ALTITUDE  
13000 FT

RADAR	119.000-125.400
APP	119.000-125.400
TWR	118.100
GND	121.900
ATIS	127.000

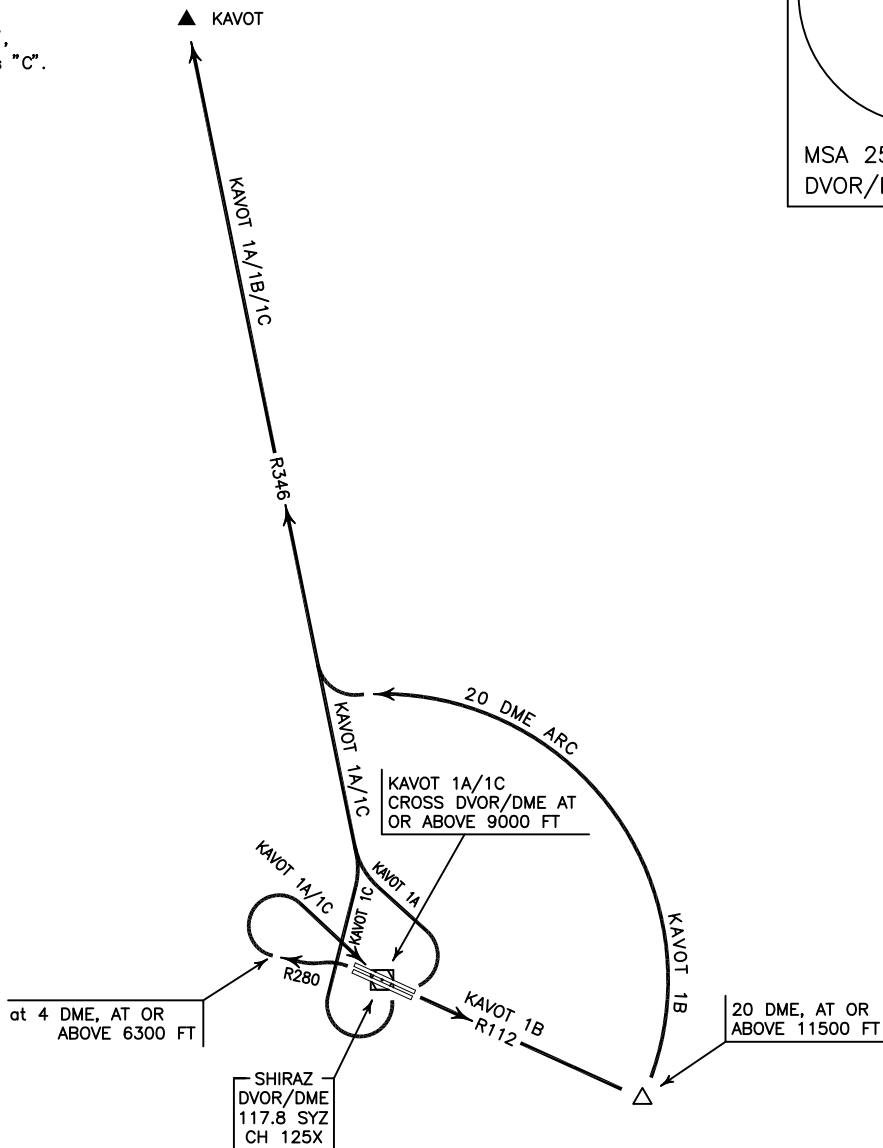
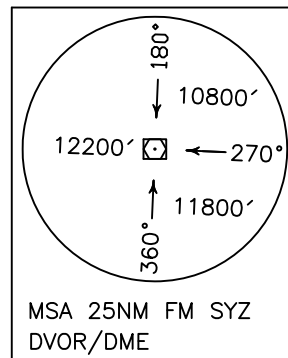
SHIRAZ/SHAHID DASTGHAIB  
RWY 11R/L 29L/R  
KAVOT 1A/1B/1C

ALL DIRECTIONS ARE MAGNETIC.  
LEVEL AND ELEVATIONS ARE IN FEET.  
DISTANCES ARE IN NAUTICAL MILES.

TMA above FL200 class "A",  
at FL 200 and below class "C".  
CTR and ATZ class "D".



NOT TO SCALE



**KAVOT 1A DEP:**

DEP RWY 29L/R – After take off turn left climb on RDL 280 to 6300 FT or above, then turn right (at 4 DME) to cross SYZ DVOR/DME at or above 9000 FT, then turn left to intercept RDL 346 to KAVOT and climb to cleared level.

MNM rate of climb 350 FT/NM up to 12000 FT, MAX IAS up to SYZ DVOR/DME 230 KT.

**KAVOT 1B DEP:**

DEP RWY 11R/L – After take off climb on RDL 112 to 11500 FT or above within 20 DME, at 20 DME turn left to maintain 20 DME arc to intercept RDL 346 to KAVOT and climb to cleared level.

MNM rate of climb 350 FT/NM up to 10000 FT.

**KAVOT 1C DEP:**

DEP RWY 29L/R – After take off turn left climb on RDL 280 to 6300 FT or above, then turn right (at 4 DME) to cross SYZ DVOR/DME at or above 9000 FT, then turn right to intercept RDL 346 to KAVOT and climb to cleared level.

MNM rate of climb 350 FT/NM up to 12000 FT, MAX IAS up to SYZ DVOR/DME 230 KT.