

STANDARD DEPARTURE CHART-
INSTRUMENT (SID)-ICAO

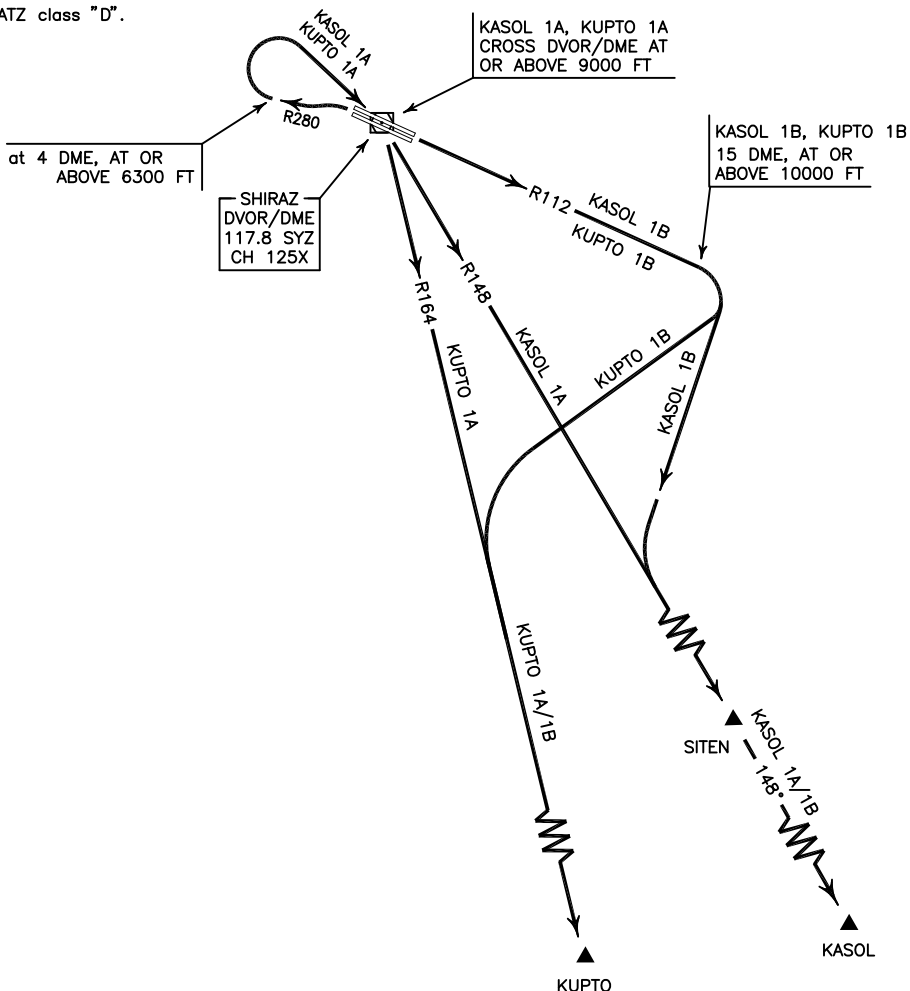
TRANSITION ALTITUDE
13000 FT

| | |
|-------|-----------------|
| RADAR | 119.000-125.400 |
| APP | 119.000-125.400 |
| TWR | 118.100 |
| GND | 121.900 |
| ATIS | 127.000 |

SHIRAZ/SHAHID DASTGHAIB
RWY 11R/L 29L/R
KASOL 1A/1B
KUPTO 1A/1B

ALL DIRECTIONS ARE MAGNETIC.
LEVEL AND ELEVATIONS ARE IN FEET.
DISTANCES ARE IN NAUTICAL MILES.

TMA above FL200 class "A",
at FL 200 and below class "C".
CTR and ATZ class "D".



KASOL 1A DEP:

DEP RWY 29L/R - After take off turn left climb on RDL 280 to 6300 FT or above, then turn right (at 4 DME) to cross SYZ DVOR/DME at or above 9000 FT, then intercept RDL 148 to SITEN, then continue on TR 148° MAG to KASOL and climb to cleared level.

MNM rate of climb 350 FT/NM up to 12000 FT, MAX IAS up to SYZ DVOR/DME 230 KT.

KASOL 1B DEP:

DEP RWY 11R/L - After take off climb on RDL 112 to 10000 FT or above within 15 DME, at 15 DME turn right to intercept RDL 148 to SITEN, then continue on TR 148° MAG to KASOL and climb to cleared level.

MNM rate of climb 350 FT/NM up to 10000 FT.

KUPTO 1A DEP:

DEP RWY 29L/R - After take off turn left climb on RDL 280 to 6300 FT or above, then turn right (at 4 DME) to cross SYZ DVOR/DME at or above 9000 FT, then intercept RDL 164 to KUPTO and climb to cleared level.

MNM rate of climb 350 FT/NM up to 12000 FT, MAX IAS up to SYZ DVOR/DME 230 KT.

KUPTO 1B DEP:

DEP RWY 11R/L - After take off climb on RDL 112 to 10000 FT or above within 15 DME, at 15 DME turn right to intercept RDL 164 to KUPTO and climb to cleared level.

MNM rate of climb 350 FT/NM up to 10000 FT.