

STANDARD DEPARTURE CHART-  
INSTRUMENT (SID)-ICAO

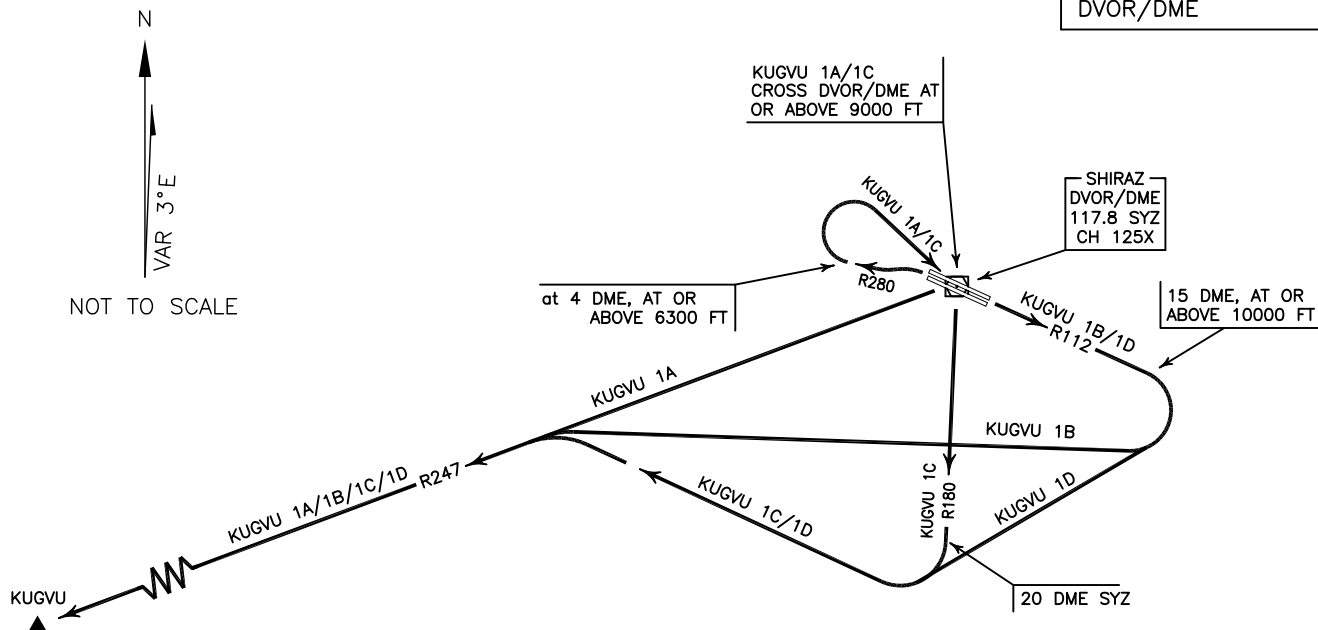
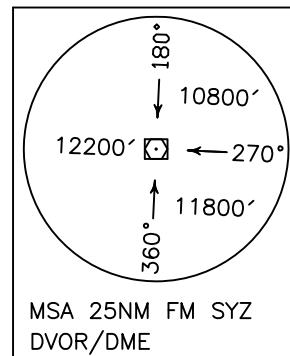
TRANSITION ALTITUDE  
13000 FT

RADAR	119.000-125.400
APP	119.000-125.400
TWR	118.100
GND	121.900
ATIS	127.000

SHIRAZ/SHAHID DASTGHAIB  
RWY 11R/L 29L/R  
KUGVU 1A/1B/1C/1D

ALL DIRECTIONS ARE MAGNETIC.  
LEVEL AND ELEVATIONS ARE IN FEET.  
DISTANCES ARE IN NAUTICAL MILES.

TMA above FL200 class "A",  
at FL 200 and below class "C".  
CTR and ATZ class "D".



**KUGVU 1A DEP:**

DEP RWY 29L/R - After take off turn left climb on RDL 280 to 6300 FT or above, then turn right (at 4 DME) to cross SYZ DVOR/DME at or above 9000 FT, then turn right to intercept RDL 247 to KUGVU and climb to cleared level.

MNM rate of climb 350 FT/NM up to 12000 FT, MAX IAS up to SYZ DVOR/DME 230 KT.

This procedure is not usable when OID48 is active.

**KUGVU 1B DEP:**

DEP RWY 11R/L - After take off climb on RDL 112 to 10000 FT or above within 15 DME, at 15 DME turn right to intercept RDL 247 to KUGVU and climb to cleared level.

MNM rate of climb 350 FT/NM up to 10000 FT.

This procedure is not usable when OID48 is active.

**KUGVU 1C DEP:**

DEP RWY 29L/R - After take off turn left climb on RDL 280 to 6300 FT or above, then turn right (at 4 DME) to cross SYZ DVOR/DME at or above 9000 FT, then turn right to intercept RDL 180, at 20 DME turn right to intercept RDL 247 to KUGVU and climb to cleared level.

MNM rate of climb 350 FT/NM up to 12000 FT, MAX IAS up to SYZ DVOR/DME 230 KT.

**KUGVU 1D DEP:**

DEP RWY 11R/L - After take off climb on RDL 112 to 10000 FT or above within 15 DME, at 15 DME turn right to intercept RDL 247 to KUGVU, cross RDL 180 beyond 20 DME and climb to cleared level.

MNM rate of climb 350 FT/NM up to 10000 FT.