

STANDARD DEPARTURE CHART-  
INSTRUMENT (SID)-ICAO

TRANSITION ALTITUDE  
13000 FT

RADAR	119.000-125.400
APP	119.000-125.400
TWR	118.100
GND	121.900
ATIS	127.000

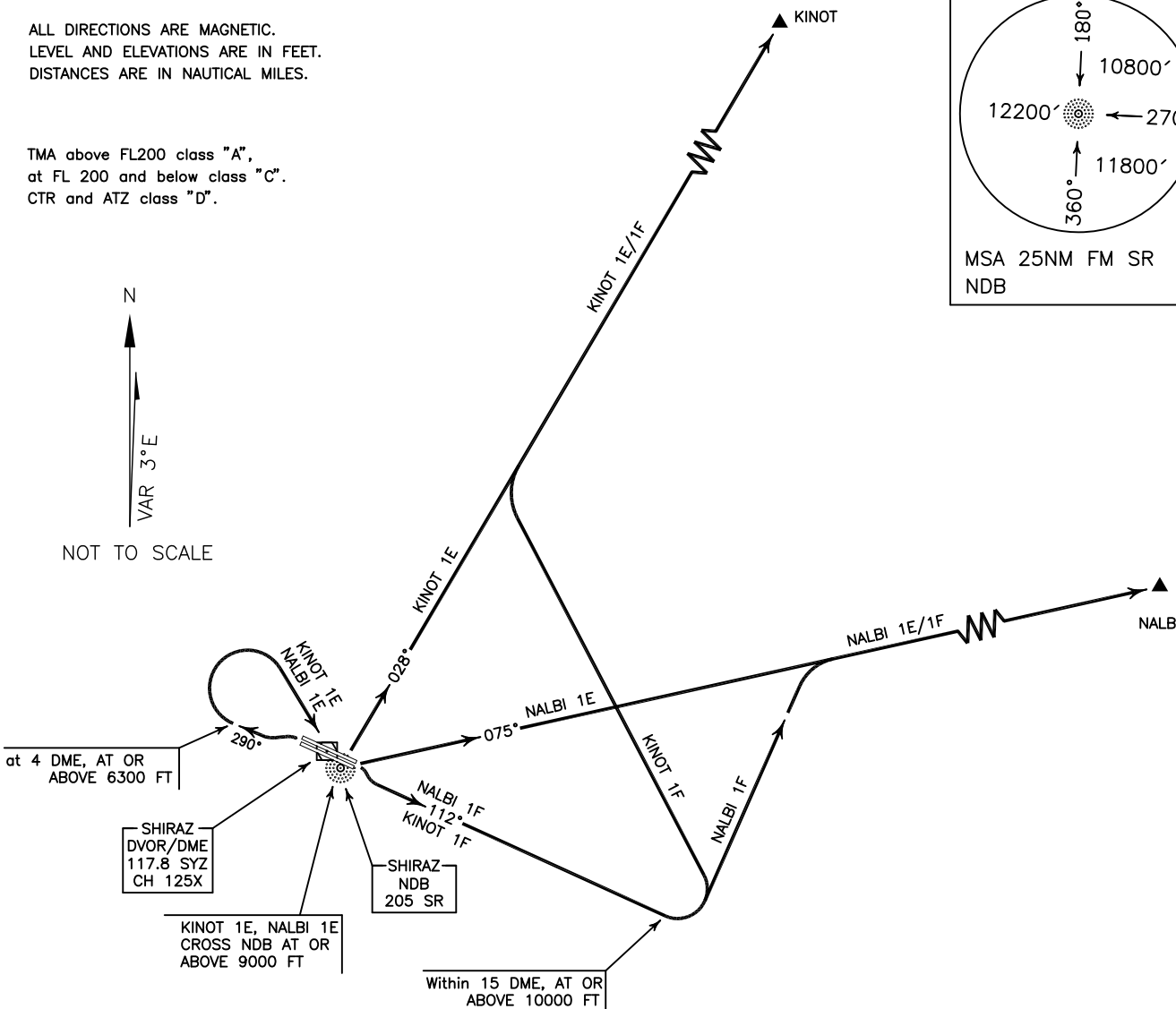
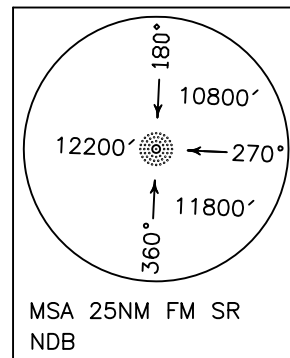
SHIRAZ/SHAHID DASTGHAIB  
RWY 11R/L 29L/R  
KINOT 1E/1F  
NALBI 1E/1F

ALL DIRECTIONS ARE MAGNETIC.  
LEVEL AND ELEVATIONS ARE IN FEET.  
DISTANCES ARE IN NAUTICAL MILES.

TMA above FL200 class "A",  
at FL 200 and below class "C".  
CTR and ATZ class "D".



NOT TO SCALE



**KINOT 1E DEP:**

DEP RWY 29L/R - After take off turn left climb on BRG 290° to 6300 FT or above, then turn right (at 4 DME) to cross SR NDB at or above 9000 FT, then turn left to establish BRG 028° to KINOT and climb to cleared level.

MNM rate of climb 350 FT/NM up to 12000 FT, MAX IAS up to SR NDB 230 KT.

**KINOT 1F DEP:**

DEP RWY 11R/L - After take off climb on BRG 112° to 10000 FT or above, then turn left (within 15 DME) to establish BRG 028° to KINOT and climb to cleared level.

MNM rate of climb 350 FT/NM up to 10000 FT.

**NALBI 1E DEP:**

DEP RWY 29L/R - After take off turn left climb on BRG 290° to 6300 FT or above, then turn right (at 4 DME) to cross SR NDB at or above 9000 FT, then turn left to establish BRG 075° to NALBI and climb to cleared level.

MNM rate of climb 350 FT/NM up to 12000 FT, MAX IAS up to SR NDB 230 KT.

**NALBI 1F DEP:**

DEP RWY 11R/L - After take off climb on BRG 112° to 10000 FT or above, then turn left (within 15 DME) to establish BRG 075° to NALBI and climb to cleared level.

MNM rate of climb 350 FT/NM up to 10000 FT.