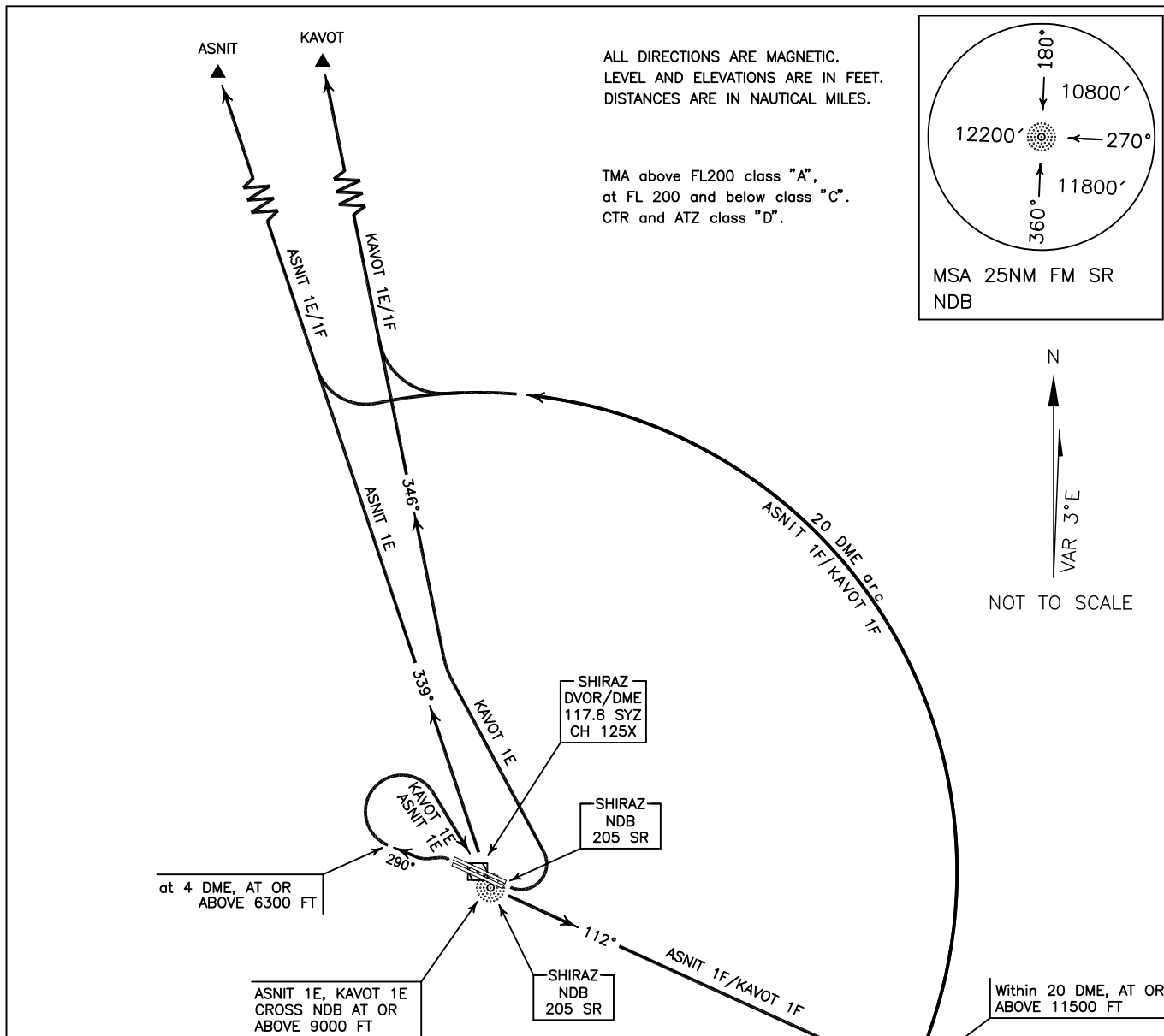


STANDARD DEPARTURE CHART-
INSTRUMENT (SID)-ICAO

TRANSITION ALTITUDE
13000 FT

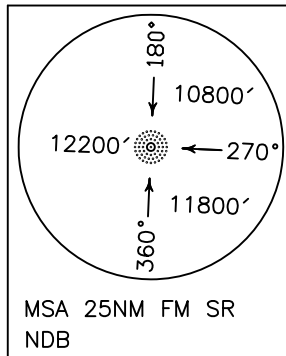
RADAR	119.000-125.400
APP	119.000-125.400
TWR	118.100
GND	121.900
ATIS	127.000

SHIRAZ/SHAHID DASTGHAIB
RWY 11R/L 29L/R
KAVOT 1E/1F
ASNIT 1E/1F



ALL DIRECTIONS ARE MAGNETIC.
LEVEL AND ELEVATIONS ARE IN FEET.
DISTANCES ARE IN NAUTICAL MILES.

TMA above FL200 class "A",
at FL 200 and below class "C".
CTR and ATZ class "D".



N
VAR 3°E
NOT TO SCALE

KAVOT 1E DEP:

DEP RWY 29L/R - After take off turn left climb on BRG 290° to 6300 FT or above, then turn right (at 4 DME) to cross SR NDB at or above 9000 FT, then turn left to establish BRG 346° to KAVOT and climb to cleared level.

MNM rate of climb 350 FT/NM up to 12000 FT, MAX IAS up to SR NDB 230 KT.

KAVOT 1F DEP:

DEP RWY 11R/L - After take off climb on BRG 112° to 11500 FT or above then turn left (within 20 DME) to maintain 20 DME arc to establish BRG 346° to KAVOT and climb to cleared level.

MNM rate of climb 350 FT/NM up to 10000 FT.

ASNIT 1E DEP:

DEP RWY 29L/R - After take off turn left climb on BRG 290° to 6300 FT or above, then turn right (at 4 DME) to cross SR NDB at or above 9000 FT, then turn left to establish BRG 339° to ASNIT and climb to cleared level.

MNM rate of climb 350 FT/NM up to 12000 FT, MAX IAS up to SR NDB 230 KT.

ASNIT 1F DEP:

DEP RWY 11R/L - After take off climb on BRG 112° to 11500 FT or above then turn left (within 20 DME) to maintain 20 DME arc to establish BRG 339° to ASNIT and climb to cleared level.

MNM rate of climb 350 FT/NM up to 10000 FT.