

STANDARD DEPARTURE CHART-
INSTRUMENT (SID)-ICAO

TRANSITION ALTITUDE
13000 FT

RADAR	119.000-125.400
APP	119.000-125.400
TWR	118.100
GND	121.900
ATIS	127.000

SHIRAZ/SHAHID DASTGHAIB
RWY 11R/L 29L/R
KASOL 1E/1F
KUPTO 1E/1F

ALL DIRECTIONS ARE MAGNETIC.
LEVEL AND ELEVATIONS ARE IN FEET.
DISTANCES ARE IN NAUTICAL MILES.

TMA above FL200 class "A",
at FL 200 and below class "C".
CTR and ATZ class "D".

at 4 DME, AT OR
ABOVE 6300 FT



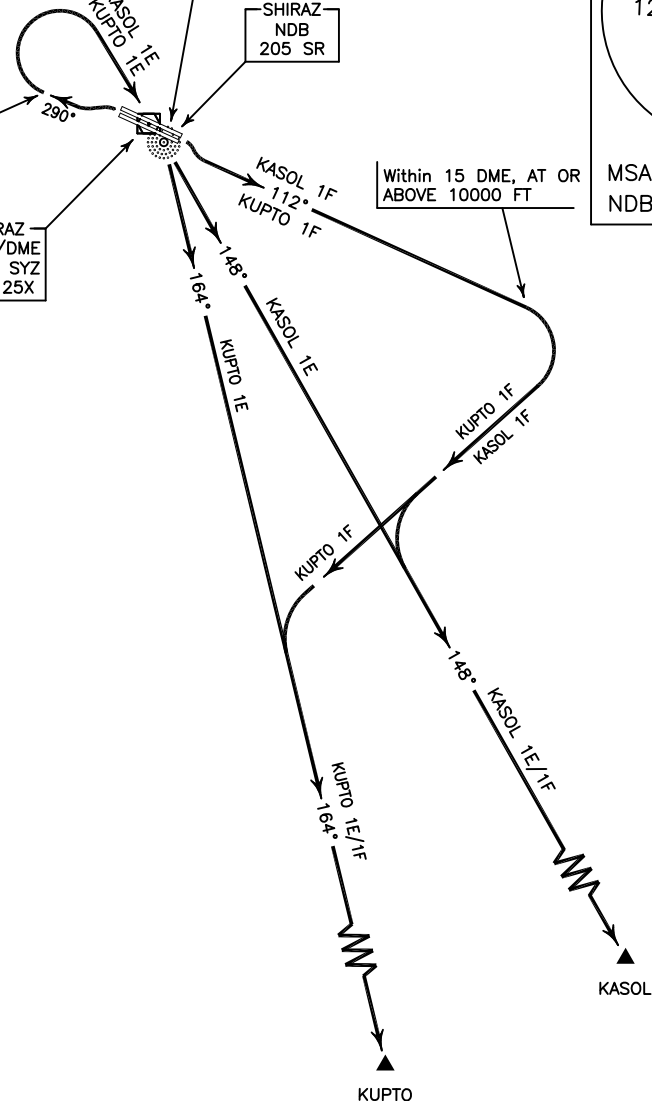
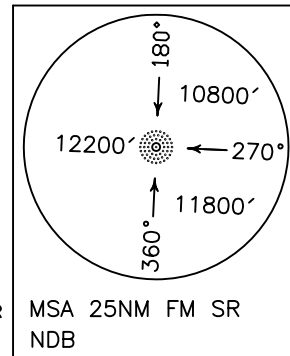
NOT TO SCALE

SHIRAZ
DVOR/DME
117.8 SYZ
CH 125X

KASOL 1E, KUPTO 1E
CROSS NDB AT OR
ABOVE 9000 FT

SHIRAZ
NDB
205 SR

Within 15 DME, AT OR
ABOVE 10000 FT



KASOL 1E DEP:

DEP RWY 29L/R - After take off turn left climb on BRG 290° to 6300 FT or above, then turn right (at 4 DME) to cross SR NDB at or above 9000 FT, then establish BRG 148° to KASOL and climb to cleared level.

MNM rate of climb 350 FT/NM up to 12000 FT, MAX IAS up to SR NDB 230 KT.

KASOL 1F DEP:

DEP RWY 11R/L - After take off climb on BRG 112° to 10000 FT or above, then turn right (within 15 DME) to establish BRG 148° to KASOL and climb to cleared level.

MNM rate of climb 350 FT/NM up to 10000 FT.

KUPTO 1E DEP:

DEP RWY 29L/R - After take off turn left climb on BRG 290° to 6300 FT or above, then turn right (at 4 DME) to cross SR NDB at or above 9000 FT, then establish BRG 164° to KUPTO and climb to cleared level.

MNM rate of climb 350 FT/NM up to 12000 FT, MAX IAS up to SR NDB 230 KT.

KUPTO 1F DEP:

DEP RWY 11R/L - After take off climb on BRG 112° to 10000 FT or above, then turn right (within 15 DME) to establish BRG 164° to KUPTO and climb to cleared level.

MNM rate of climb 350 FT/NM up to 10000 FT.