

STANDARD DEPARTURE CHART-
INSTRUMENT (SID)-ICAO

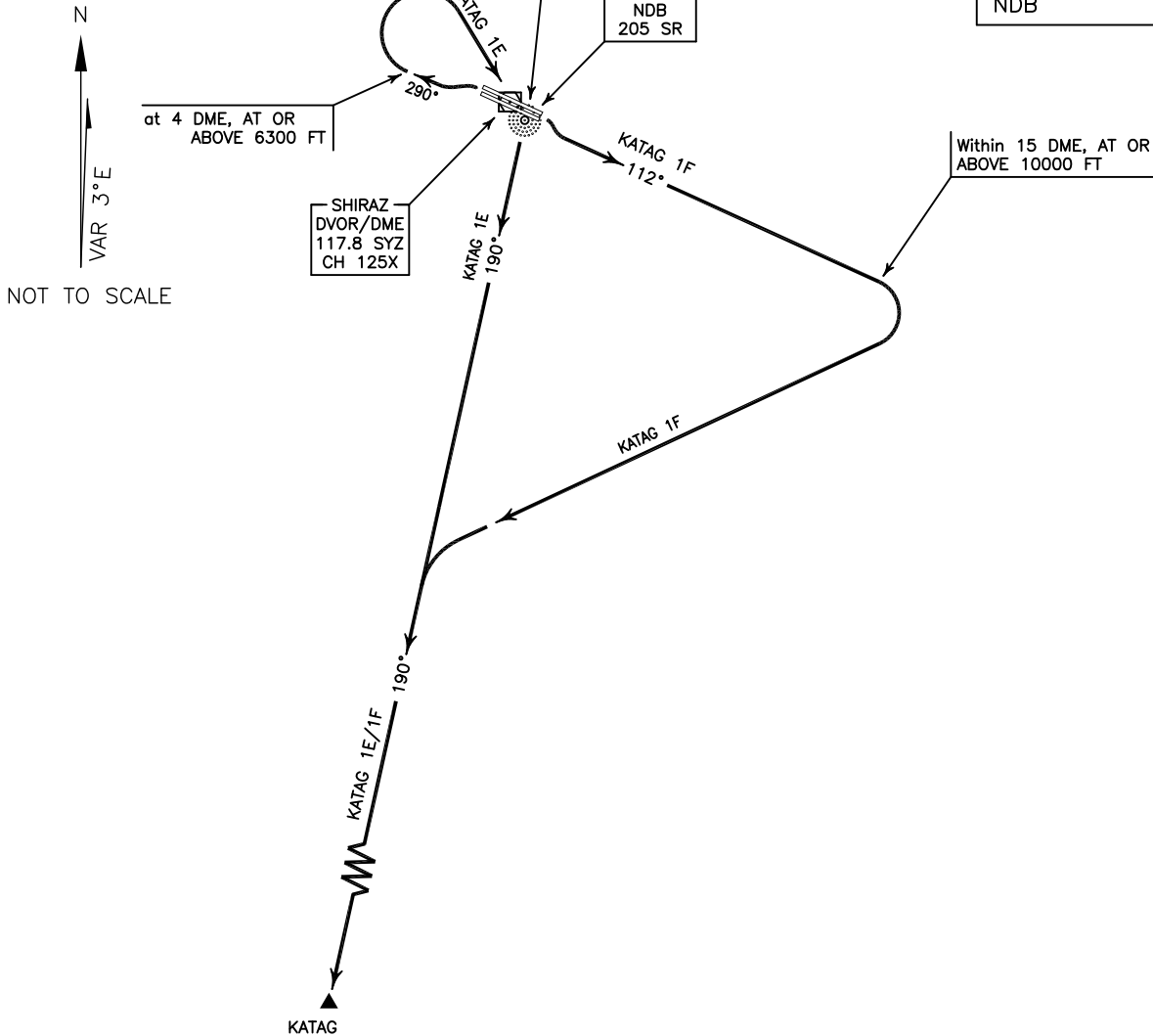
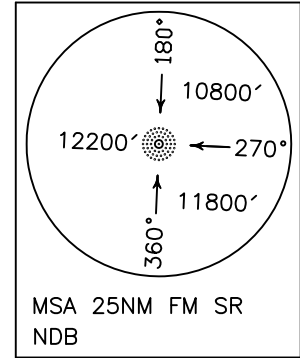
TRANSITION ALTITUDE
13000 FT

RADAR	119.000-125.400
APP	119.000-125.400
TWR	118.100
GND	121.900
ATIS	127.000

SHIRAZ/SHAHID DASTGHAIB
RWY 11R/L 29L/R
KATAG 1E/1F

ALL DIRECTIONS ARE MAGNETIC.
LEVEL AND ELEVATIONS ARE IN FEET.
DISTANCES ARE IN NAUTICAL MILES.

TMA above FL200 class "A",
at FL 200 and below class "C".
CTR and ATZ class "D".



KATAG 1E DEP:

DEP RWY 29L/R - After take off turn left climb on BRG 290° to 6300 FT or above, then turn right (at 4 DME) to cross SR NDB at or above 9000 FT, then turn right to establish BRG 190° to KATAG and climb to cleared level.

MNM rate of climb 350 FT/NM up to 12000 FT, MAX IAS up to SR NDB 230 KT.

KATAG 1F DEP:

DEP RWY 11R/L - After take off climb on BRG 112° to 10000 FT or above, then turn right (within 15 DME) to establish BRG 190° to KATAG and climb to cleared level.

MNM rate of climb 350 FT/NM up to 10000 FT.