



AERODROME CHART - ICAO

ARP 34°20'53" N  
047°09'24" E

AD ELEV 4301 FT

TWR 122.450, 121.900  
ATIS 126.800

KERMANSHAH/SHAHID ASHRAFI ESFAHANI

RWY	Direction	THR	ELEV	Bearing Strength	GUND
11L	Information not available			84/F/C/X/T Asphalt	Information not Available
29R	Information not available			84/F/C/X/T Asphalt	Information not Available
11R	116.09°	342106.63N 0470836.17E	4300.0FT	36/F/C/X/T Asphalt	+26.0 FT
29L	296.09°	342020.75N 0471029.39E	4301.0FT	36/F/C/X/T Asphalt	+26.0 FT

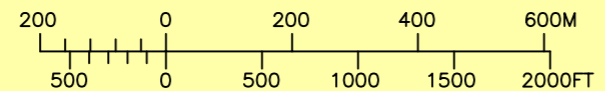
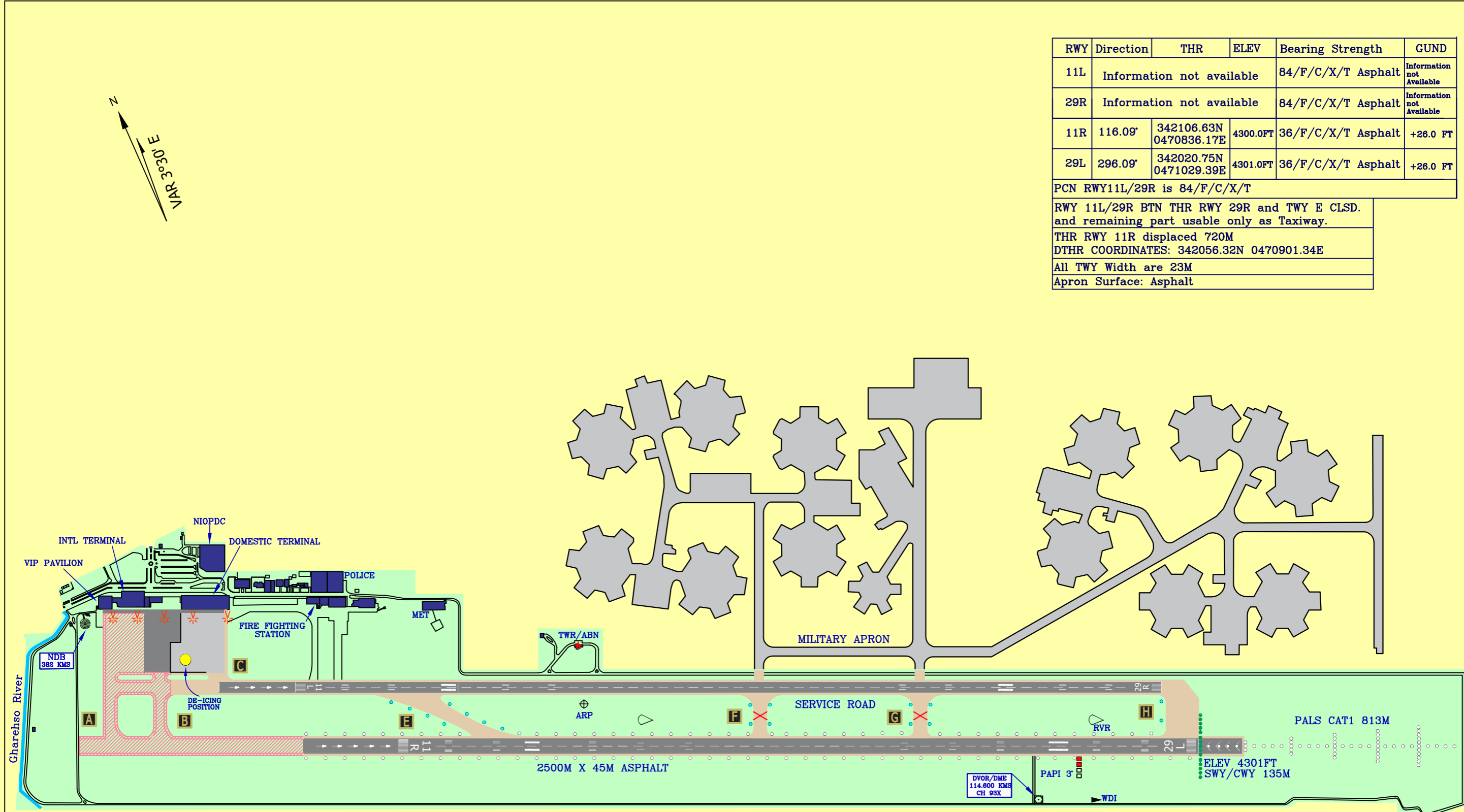
PCN RWY11L/29R is 84/F/C/X/T

RWY 11L/29R BTN THR RWY 29R and TWY E CLSD.  
and remaining part usable only as Taxiway.

THR RWY 11R displaced 720M  
DTHR COORDINATES: 342056.32N 0470901.34E

All TWY Width are 23M

Apron Surface: Asphalt



Scale 1:12000

Building	
Concrete	
Asphalt	
Under Construction	

STANDARD DEPARTURE CHART-  
INSTRUMENT (SID)-ICAO

TRANSITION ALTITUDE  
13000 FT

TWR 122.450  
121.900  
ATIS 126.800

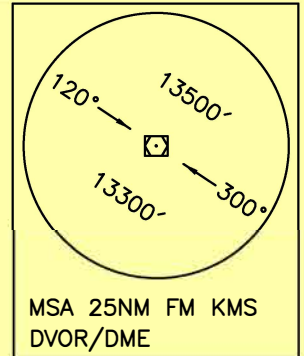
KERMANSHAH/  
SHAHID ASHRAFI ESFAHANI  
RWY 11R/29L  
MOKAB 1A/1B

ALL DIRECTIONS ARE MAGNETIC.  
LEVEL AND ELEVATIONS ARE IN FEET.  
DISTANCES ARE IN NAUTICAL MILES.

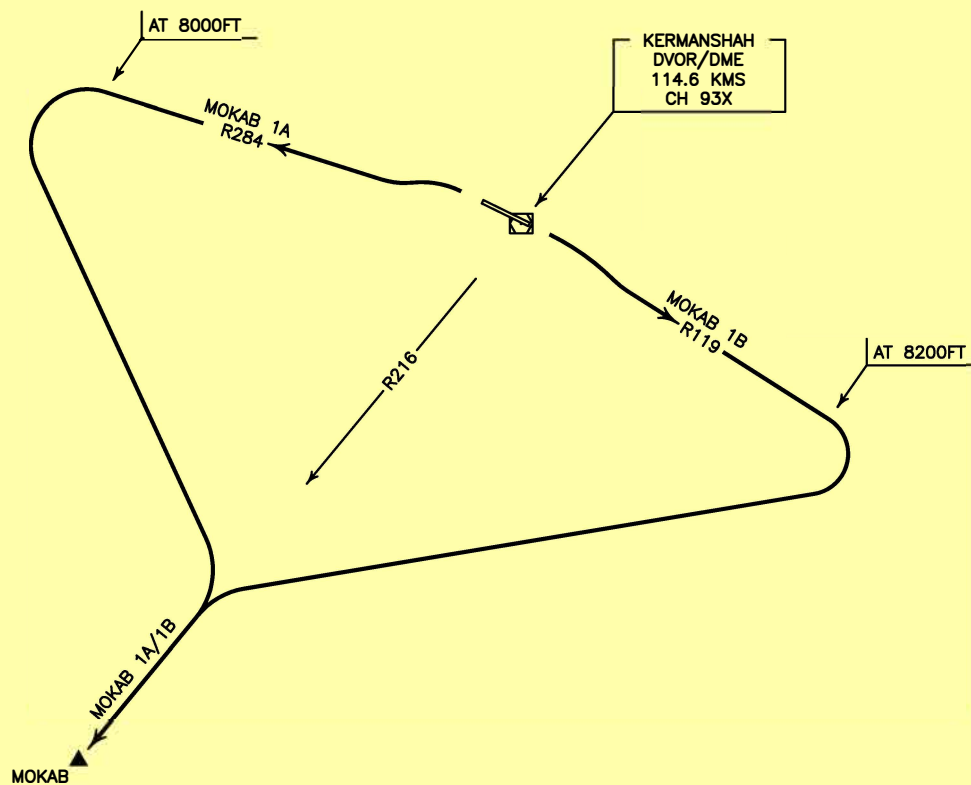
CTR and ATZ class "D".



NOT TO SCALE



MSA 25NM FM KMS  
DVOR/DME



**MOKAB 1A DEP:**

DEP RWY 29L - After take off turn left climb on RDL 284 to 8000 FT, then turn left to intercept RDL 216 to MOKAB and climb to cleared level.  
MNM rate of climb 250 FT/NM.

**MOKAB 1B DEP:**

DEP RWY 11R - After take off turn right climb on RDL 119 to 8200 FT, then turn right to intercept RDL 216 to MOKAB and climb to cleared level.  
MNM rate of climb 305 FT/NM up to 8200 FT.

STANDARD DEPARTURE CHART-  
INSTRUMENT (SID)-ICAO

TRANSITION ALTITUDE  
13000 FT

TWR 122.450  
121.900  
ATIS 126.800

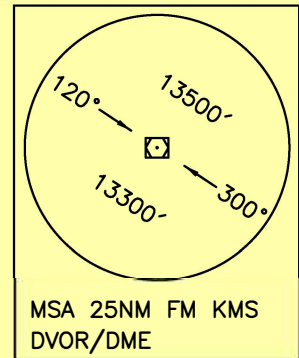
KERMANSHAH/  
SHAHID ASHRAFI ESFAHANI  
RWY 11R/29L  
ASRIL 1A/1B

ALL DIRECTIONS ARE MAGNETIC.  
LEVEL AND ELEVATIONS ARE IN FEET.  
DISTANCES ARE IN NAUTICAL MILES.

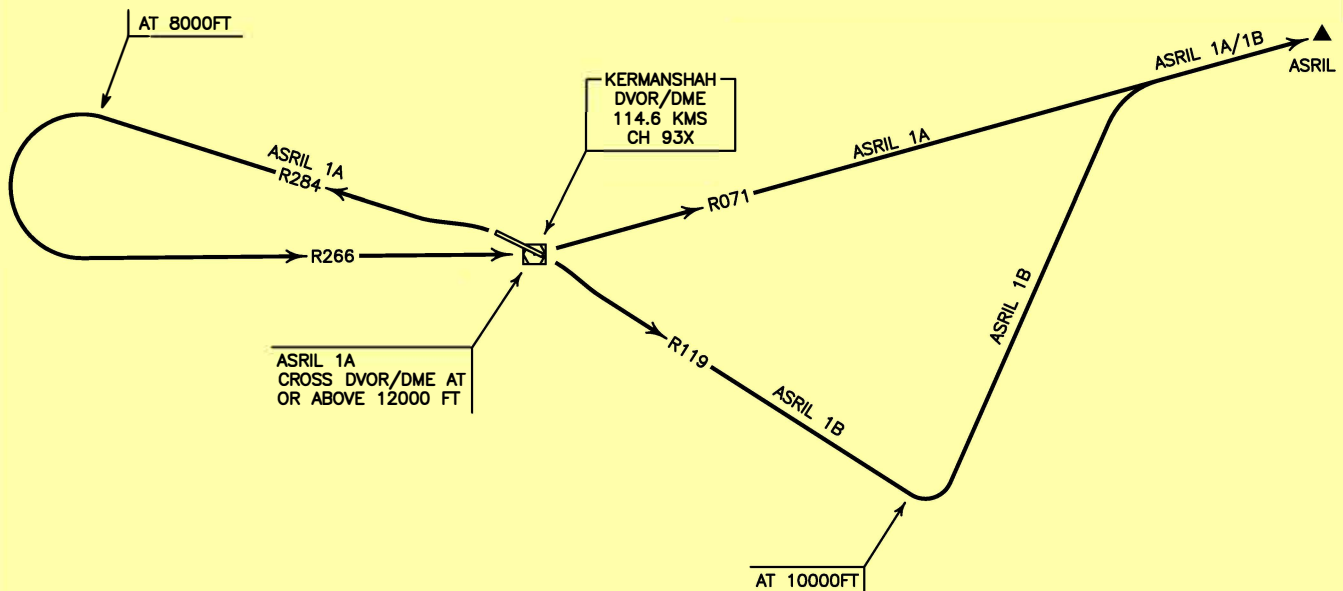
CTR and ATZ class "D".



NOT TO SCALE



MSA 25NM FM KMS  
DVOR/DME



**ASRIL 1A DEP:**

DEP RWY 29L - After take off turn left climb on RDL 284 to 8000 FT, then turn left intercept RDL 266 to cross overhead DVOR/DME at or above 12000 FT, then continue on RDL 071 to ASRIL and climb to cleared level.

**ASRIL 1B DEP:**

DEP RWY 11R - After take off turn right climb on RDL 119 to 10000 FT, then turn left intercept RDL 071 to ASRIL and climb to cleared level. MNM rate of climb 300 FT/NM.

STANDARD DEPARTURE CHART-  
INSTRUMENT (SID)-ICAO

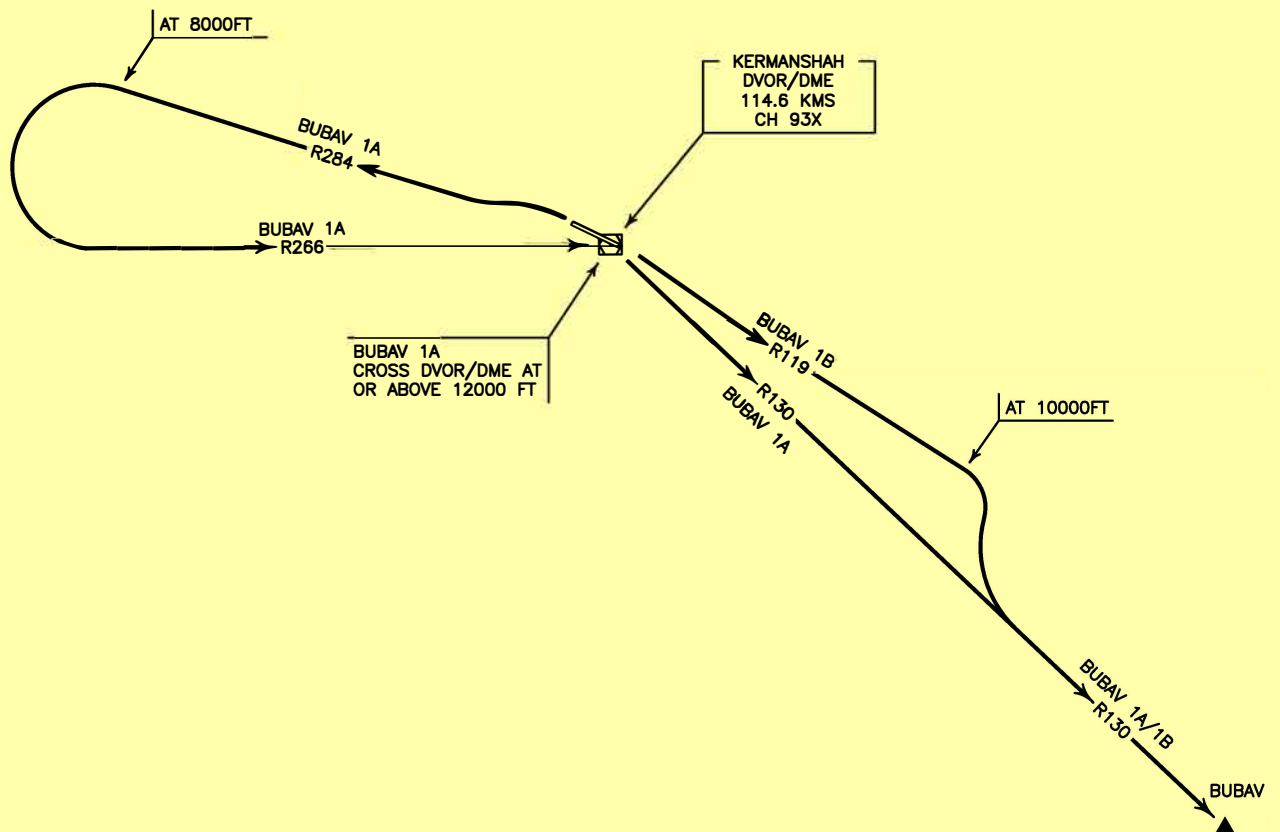
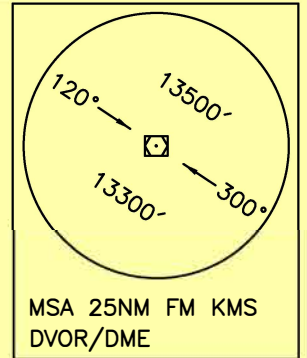
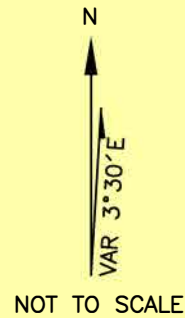
TRANSITION ALTITUDE  
13000 FT

TWR 122.450  
121.900  
ATIS 126.800

KERMANSHAH/  
SHAHID ASHRAFI ESFAHANI  
RWY 11R/29L  
BUBAV 1A/1B

ALL DIRECTIONS ARE MAGNETIC.  
LEVEL AND ELEVATIONS ARE IN FEET.  
DISTANCES ARE IN NAUTICAL MILES.

CTR and ATZ class "D".



**BUBAV 1A DEP:**

DEP RWY 29L - After take off turn left climb on RDL 284 to 8000 FT, then turn left to intercept RDL 266 to cross overhead at or above 12000 FT, then turn right to intercept RDL 130 to BUBAV and climb to cleared level.

**BUBAV 1B DEP:**

DEP RWY 11R - After take off turn right climb on RDL 119 to 10000 FT, then turn right to intercept RDL 130 to BUBAV and climb to cleared level.  
MNM rate of climb 380 FT/NM.

STANDARD DEPARTURE CHART-  
INSTRUMENT (SID)-ICAO

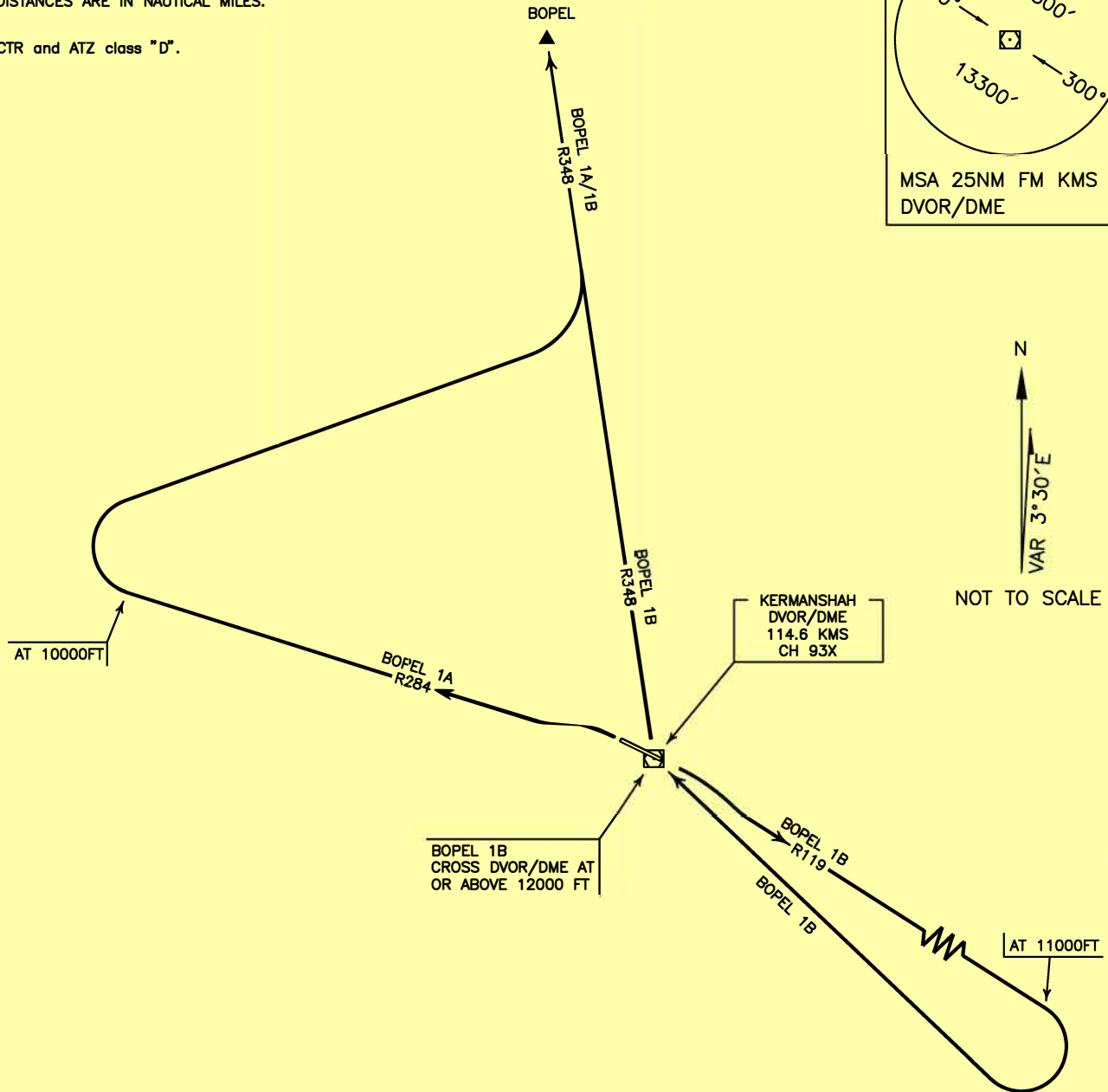
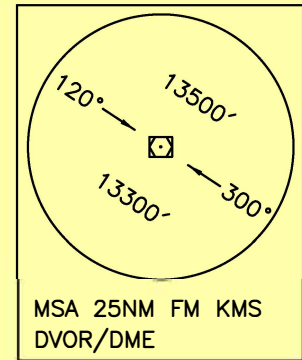
TRANSITION ALTITUDE  
13000 FT

TWR 122.450  
121.900  
ATIS 126.800

KERMANSHAH/  
SHAHID ASHRAFI ESFAHANI  
RWY 11R/29L  
BOPEL 1A/1B

ALL DIRECTIONS ARE MAGNETIC.  
LEVEL AND ELEVATIONS ARE IN FEET.  
DISTANCES ARE IN NAUTICAL MILES.

CTR and ATZ class "D".



**BOPEL 1A DEP:**

DEP RWY 29L - After take off turn left climb on RDL 284 to 10000 FT, then turn right to intercept RDL 348 to BOPEL and climb to cleared level.  
MNM rate of climb 250 FT/NM.

**BOPEL 1B DEP:**

DEP RWY 11R - After take off turn right climb on RDL 119 to 11000 FT, then turn right to cross overhead at or above 12000 FT then intercept RDL 348 to BOPEL and climb to cleared level.  
MNM rate of climb 350 FT/NM up to 11000 FT.

STANDARD DEPARTURE CHART-  
INSTRUMENT (SID)-ICAO

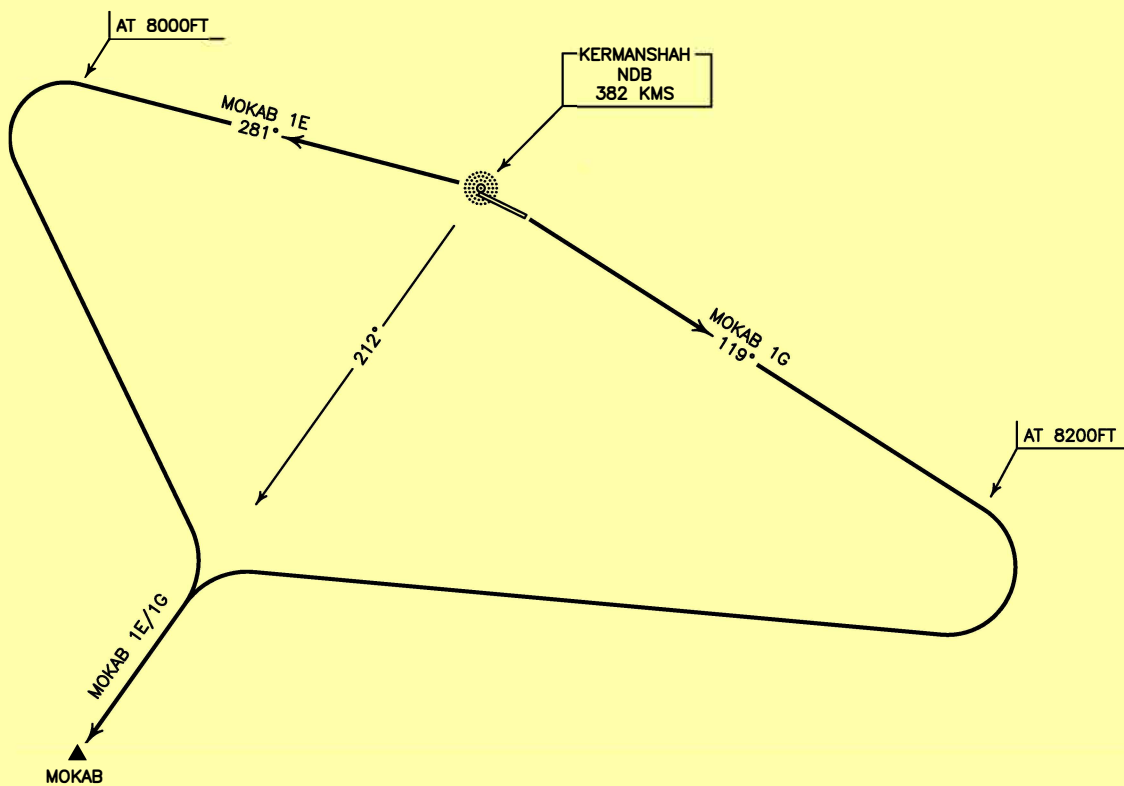
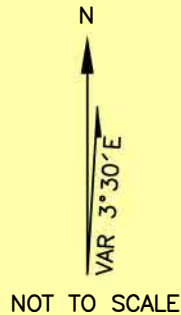
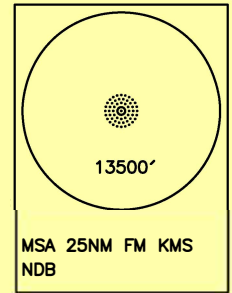
TRANSITION ALTITUDE  
13000 FT

TWR 122.450  
121.900  
ATIS 126.800

KERMANSHAH/  
SHAHID ASHRAFI ESFAHANI  
RWY 11R/29L  
MOKAB 1E/1G

ALL DIRECTIONS ARE MAGNETIC.  
LEVEL AND ELEVATIONS ARE IN FEET.  
DISTANCES ARE IN NAUTICAL MILES.

CTR and ATZ class "D".



**MOKAB 1E DEP:**

DEP RWY 29L - After take off turn left climb on BRG 281° MAG to 8000 FT, then turn left to establish BRG 212° MAG to MOKAB and climb to cleared level.  
MNM rate of climb 250 FT/NM.

**MOKAB 1G DEP:**

DEP RWY 11R - After take off turn right climb on BRG 119° MAG to 8200 FT, then turn right to establish BRG 212° MAG to MOKAB and climb to cleared level.  
MNM rate of climb 305 FT/NM up to 8200 ft.

STANDARD DEPARTURE CHART—  
INSTRUMENT (SID)—ICAO

TRANSITION ALTITUDE  
13000 FT

TWR 122.450  
121.900  
ATIS 126.800

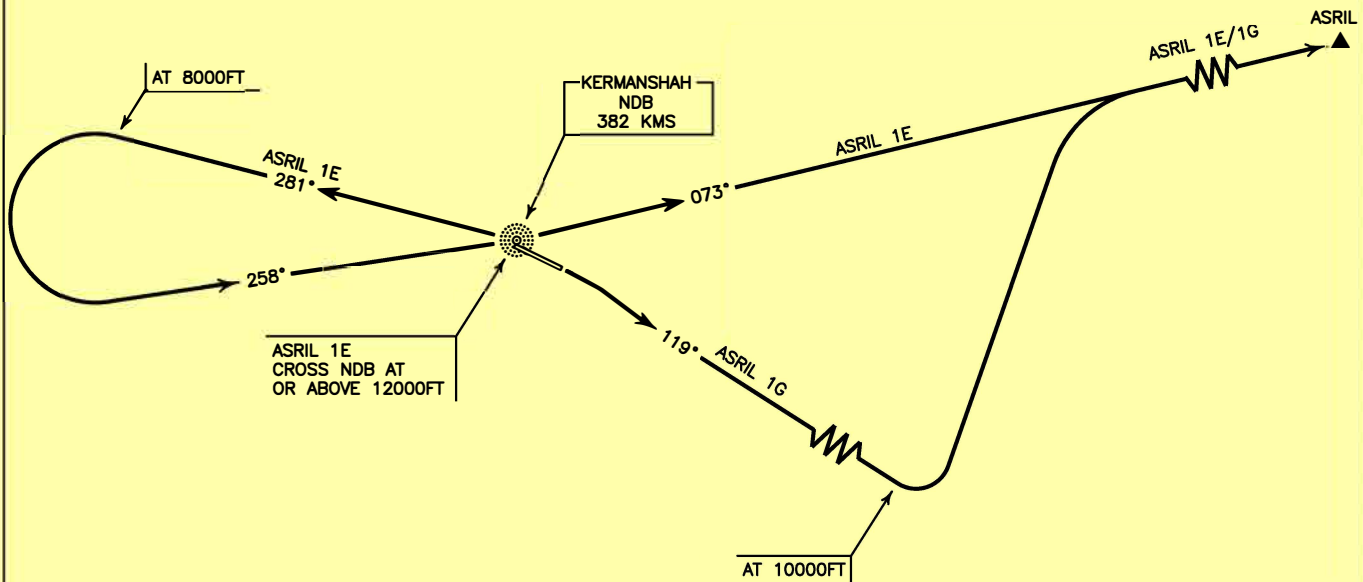
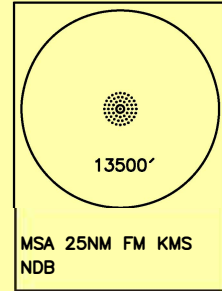
KERMANSHAH/  
SHAHID ASHRAFI ESFAHANI  
RWY 11R/29L  
ASRIL 1E/1G

ALL DIRECTIONS ARE MAGNETIC.  
LEVEL AND ELEVATIONS ARE IN FEET.  
DISTANCES ARE IN NAUTICAL MILES.

CTR and ATZ class "D".



NOT TO SCALE



**ASRIL 1E DEP:**

DEP RWY 29L – After take off turn left climb on BRG 281° MAG to 8000 FT, then turn left to intercept BRG 258° MAG to cross overhead KMS NDB at or above 12000 FT, then climb on BRG 073° MAG to ASRIL and climb to cleared level.

**ASRIL 1G DEP:**

DEP RWY 11R – After take off turn right climb on BRG 119° MAG to 10000 FT, then turn left to intercept BRG 073° MAG to ASRIL and climb to cleared level.  
MNM rate of climb 300 FT/NM.



STANDARD DEPARTURE CHART-  
INSTRUMENT (SID)-ICAO

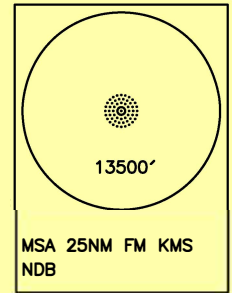
TRANSITION ALTITUDE  
13000 FT

TWR 122.450  
121.900  
ATIS 126.800

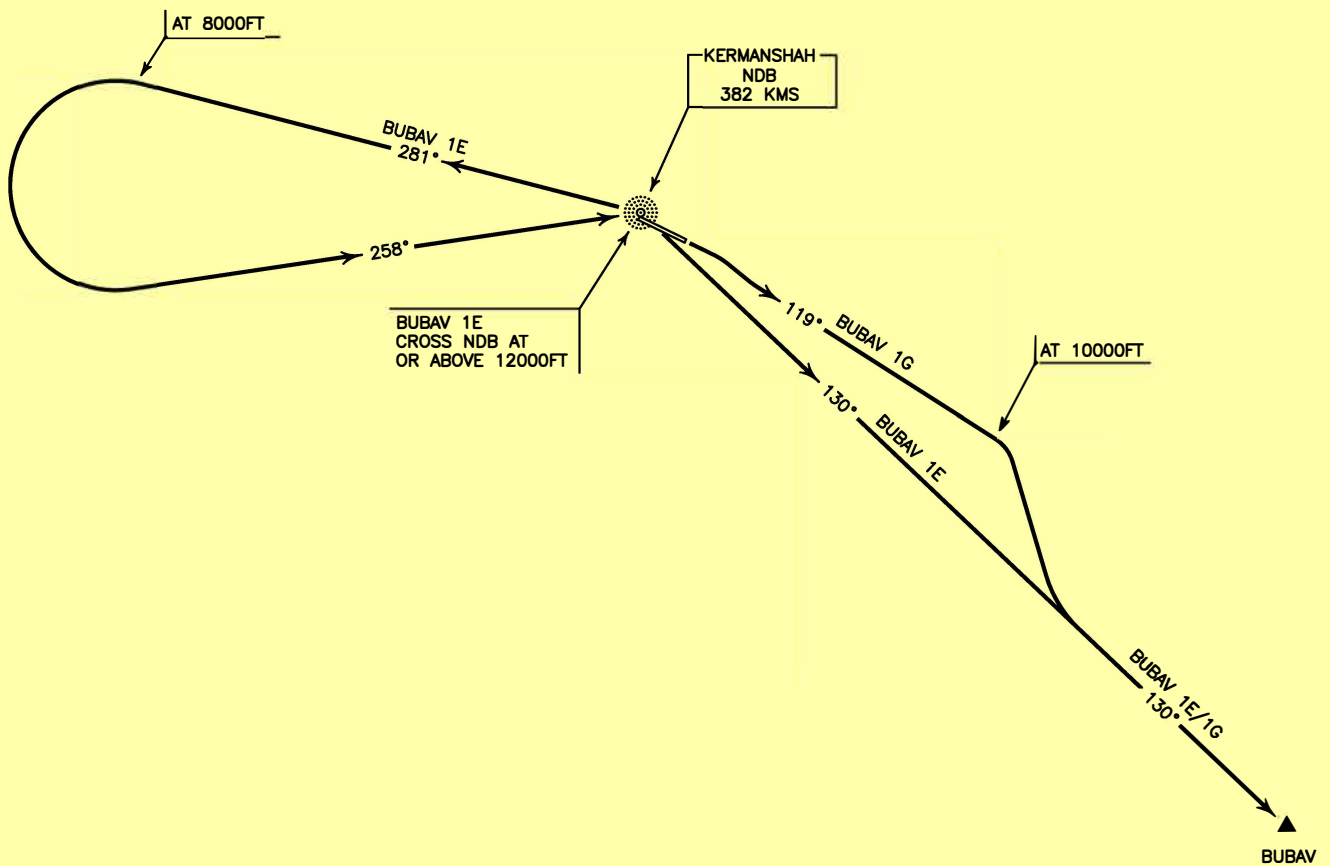
KERMANSHAH/  
SHAHID ASHRAFI ESFAHANI  
RWY 11R/29L  
BUBAV 1E/1G

ALL DIRECTIONS ARE MAGNETIC.  
LEVEL AND ELEVATIONS ARE IN FEET.  
DISTANCES ARE IN NAUTICAL MILES.

CTR and ATZ class "D".



NOT TO SCALE



**BUBAV 1E DEP:**

DEP RWY 29L - After take off turn left climb on BRG 281° MAG to 8000 FT, then turn left to intercept BRG 258° MAG to cross overhead at or above 12000 FT, then turn right to intercept BRG 130° MAG to BUBAV and climb to cleared level.

**BUBAV 1G DEP:**

DEP RWY 11R - After take off turn right climb on BRG 119° MAG to 10000 FT, then turn right to intercept BRG 130° MAG to BUBAV and climb to cleared level.  
MNM rate of climb 380 FT/NM.

STANDARD DEPARTURE CHART-  
INSTRUMENT (SID)-ICAO

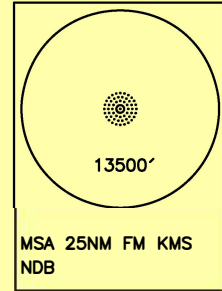
TRANSITION ALTITUDE  
13000 FT

TWR 122.450  
121.900  
ATIS 126.800

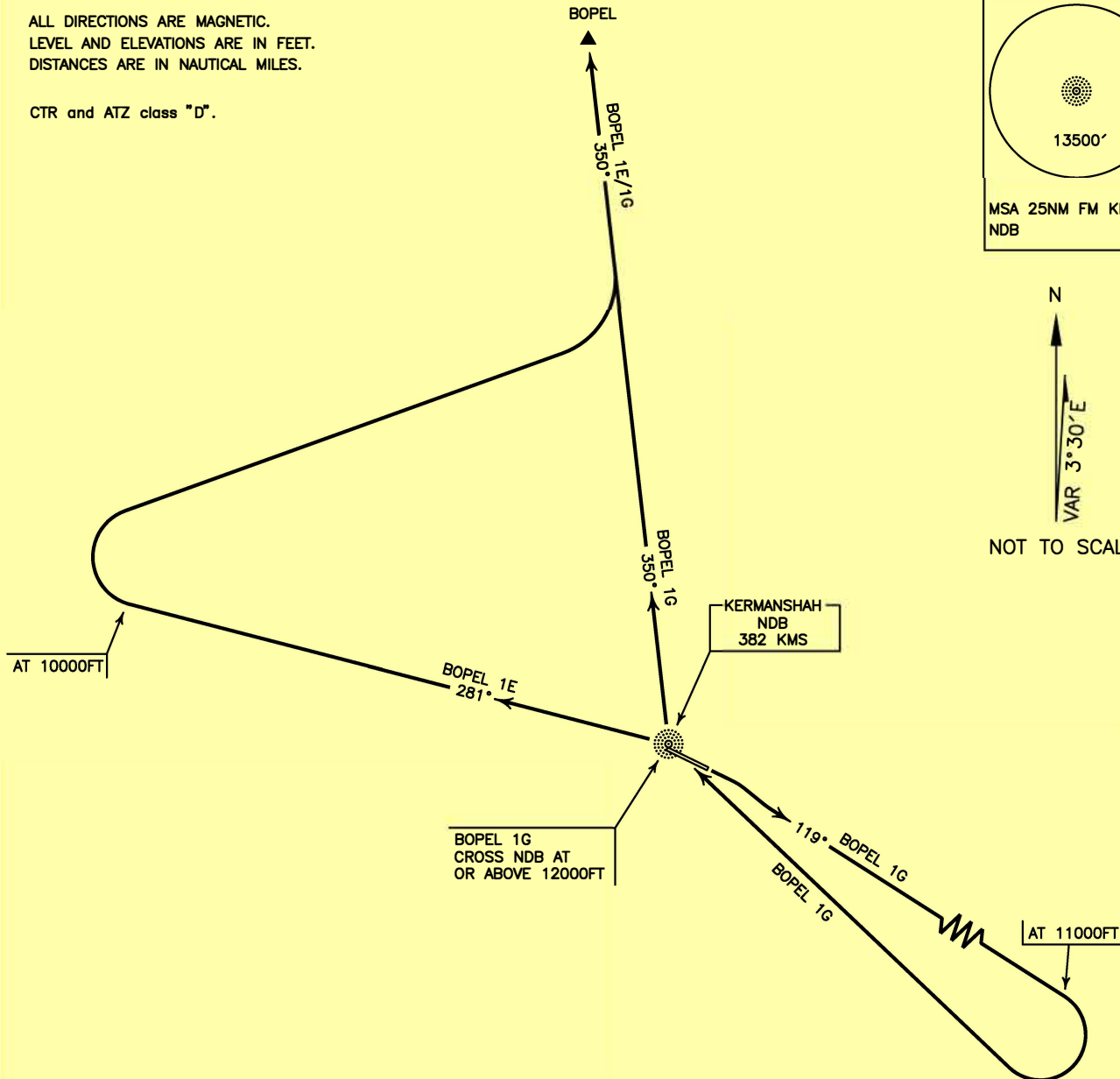
KERMANSHAH/  
SHAHID ASHRAFI ESFAHANI  
RWY 11R/29L  
BOPEL 1E/1G

ALL DIRECTIONS ARE MAGNETIC.  
LEVEL AND ELEVATIONS ARE IN FEET.  
DISTANCES ARE IN NAUTICAL MILES.

CTR and ATZ class "D".



NOT TO SCALE



**BOPEL 1E DEP:**

DEP RWY 29L - After take off turn left climb on BRG 281° MAG to 10000 FT, then turn right to intercept BRG 350° MAG to BOPEL and climb to cleared level.  
MNM rate of climb 250 FT/NM.

**BOPEL 1G DEP:**

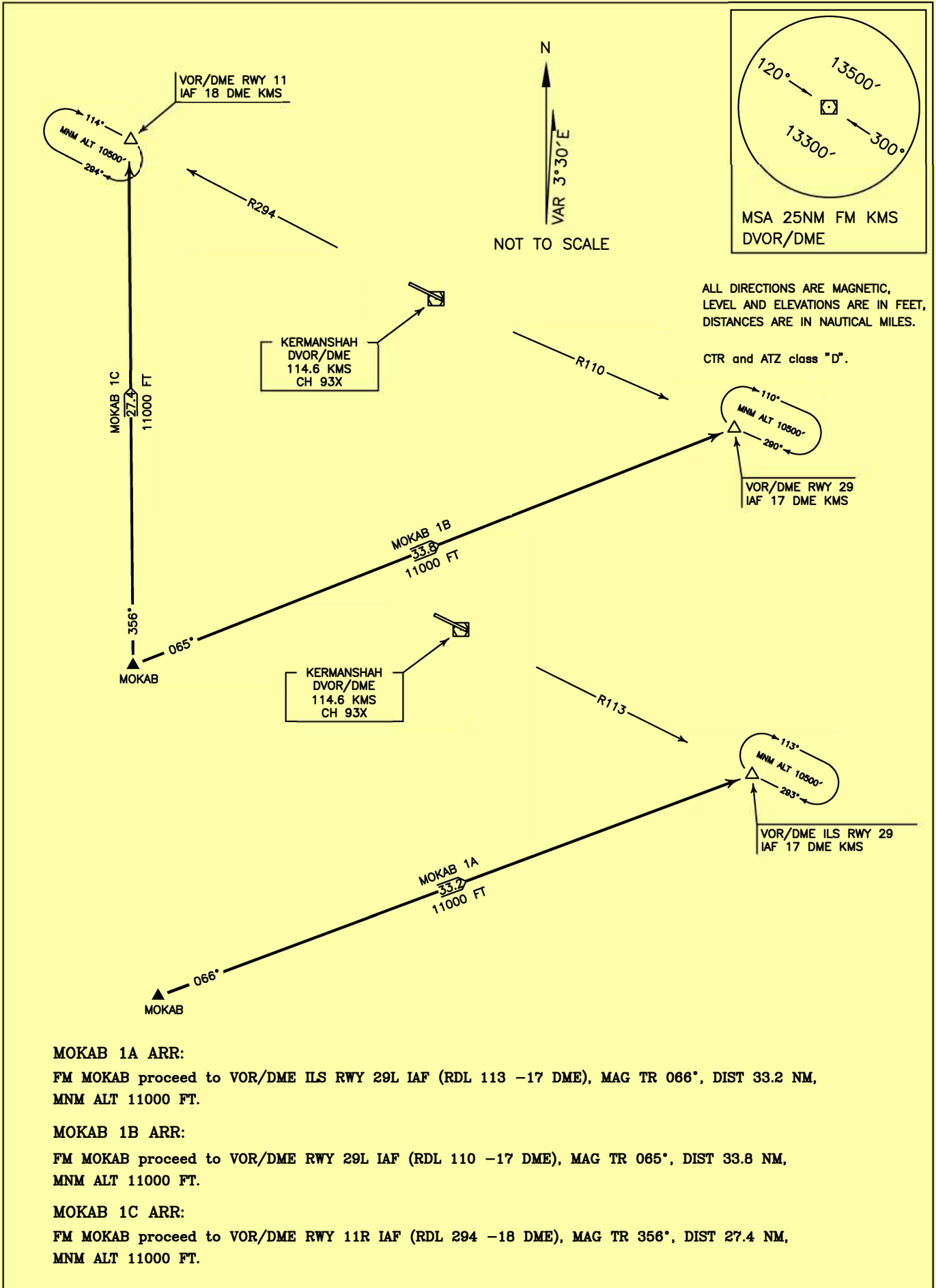
DEP RWY 11R - After take off turn right climb on BRG 119° MAG to 11000 FT, then turn right to cross overhead at or above 12000 FT then intercept BRG 350° MAG to BOPEL and climb to cleared level.  
MNM rate of climb 350 FT/NM up to 11000 FT.

STANDARD ARRIVAL CHART-  
INSTRUMENT (STAR)-ICAO

TRANSITION ALTITUDE  
13000 FT

TWR 122.450  
121.900  
ATIS 126.800

KERMANSHAH/  
SHAHID ASHRAFI ESFAHANI  
RWY 11R/29L  
MOKAB 1A/1B/1C



STANDARD ARRIVAL CHART-  
INSTRUMENT (STAR)-ICAO

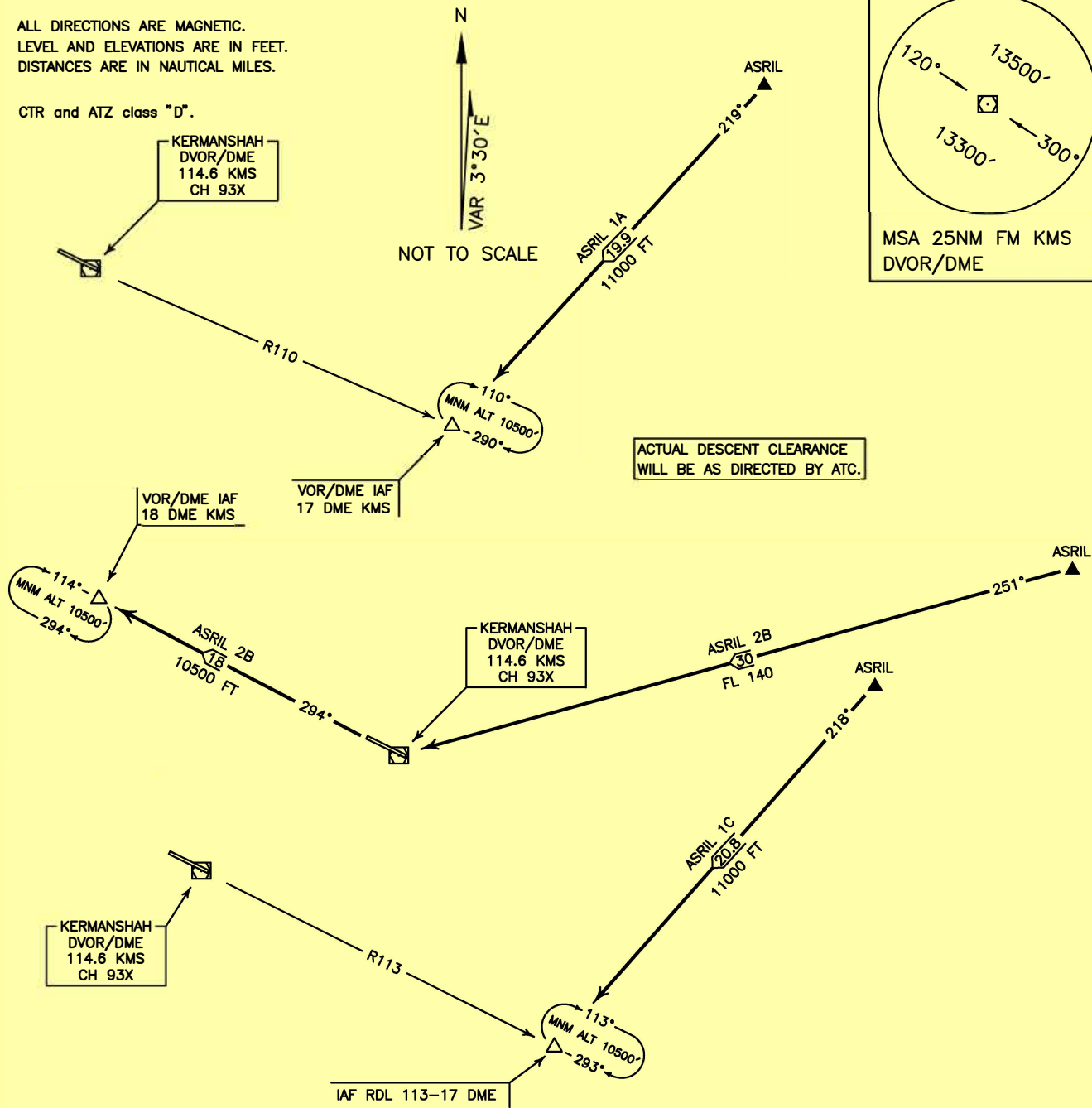
TRANSITION ALTITUDE  
13000 FT

TWR 122.450  
121.900  
ATIS 126.800

KERMANSHAH/  
SHAHID ASHRAFI ESFAHANI  
RWY 11R/29L  
ASRIL 1A/2B/1C

ALL DIRECTIONS ARE MAGNETIC.  
LEVEL AND ELEVATIONS ARE IN FEET.  
DISTANCES ARE IN NAUTICAL MILES.

CTR and ATZ class "D".



**ASRIL 1A ARR:**

FM ASRIL proceed to VOR/DME RWY 29L IAF (RDL 110-17 DME), MAG TR 219°, DIST 19.9 NM, MNM ALT 11000 FT.

**ASRIL 2B ARR:**

FM ASRIL proceed to VOR/DME RWY 11R IAF (RDL 294 - 18 DME) via overhead KMS DVOR/DME, MAG TR 251°, DIST 30 NM, MNM FL 140, then MAG TR 294° to IAF, DIST 18 NM, MNM ALT 10500 FT.

**ASRIL 1C ARR:**

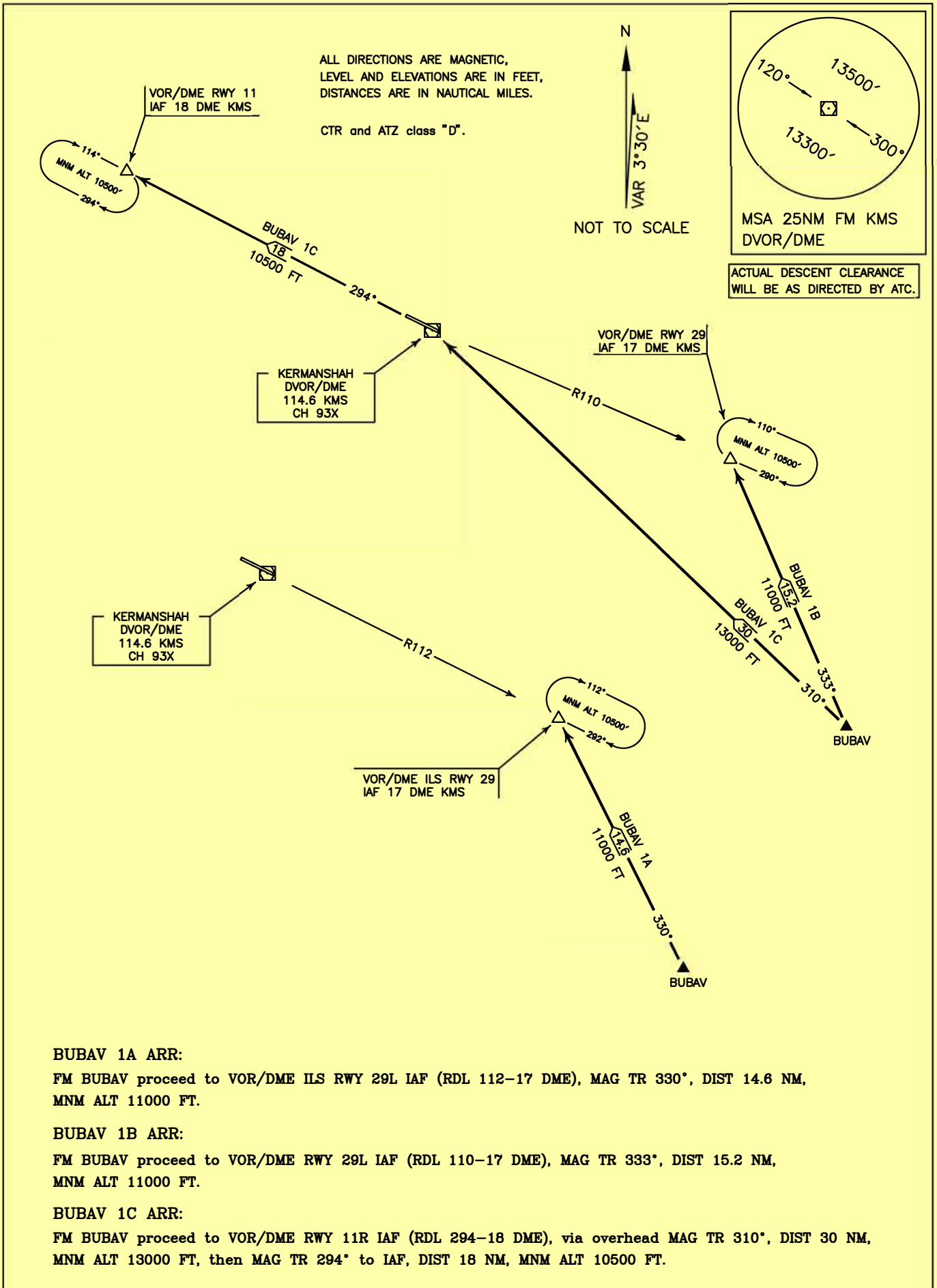
FM ASRIL proceed to VOR/DME ILS 1 RWY 29L IAF (RDL 113-17 DME), MAG TR 218°, DIST 20.8 NM, MNM ALT 11000 FT.

STANDARD ARRIVAL CHART-  
INSTRUMENT (STAR)-ICAO

TRANSITION ALTITUDE  
13000 FT

TWR 122.450  
121.900  
ATIS 126.800

KERMANSHAH/  
SHAHID ASHRAFI ESFAHANI  
RWY 11R/29L  
BUBAV 1A/1B/1C



**BUBAV 1A ARR:**

FM BUBAV proceed to VOR/DME ILS RWY 29L IAF (RDL 112-17 DME), MAG TR 330°, DIST 14.6 NM, MNM ALT 11000 FT.

**BUBAV 1B ARR:**

FM BUBAV proceed to VOR/DME RWY 29L IAF (RDL 110-17 DME), MAG TR 333°, DIST 15.2 NM, MNM ALT 11000 FT.

**BUBAV 1C ARR:**

FM BUBAV proceed to VOR/DME RWY 11R IAF (RDL 294-18 DME), via overhead MAG TR 310°, DIST 30 NM, MNM ALT 13000 FT, then MAG TR 294° to IAF, DIST 18 NM, MNM ALT 10500 FT.

STANDARD ARRIVAL CHART-  
INSTRUMENT (STAR)-ICAO

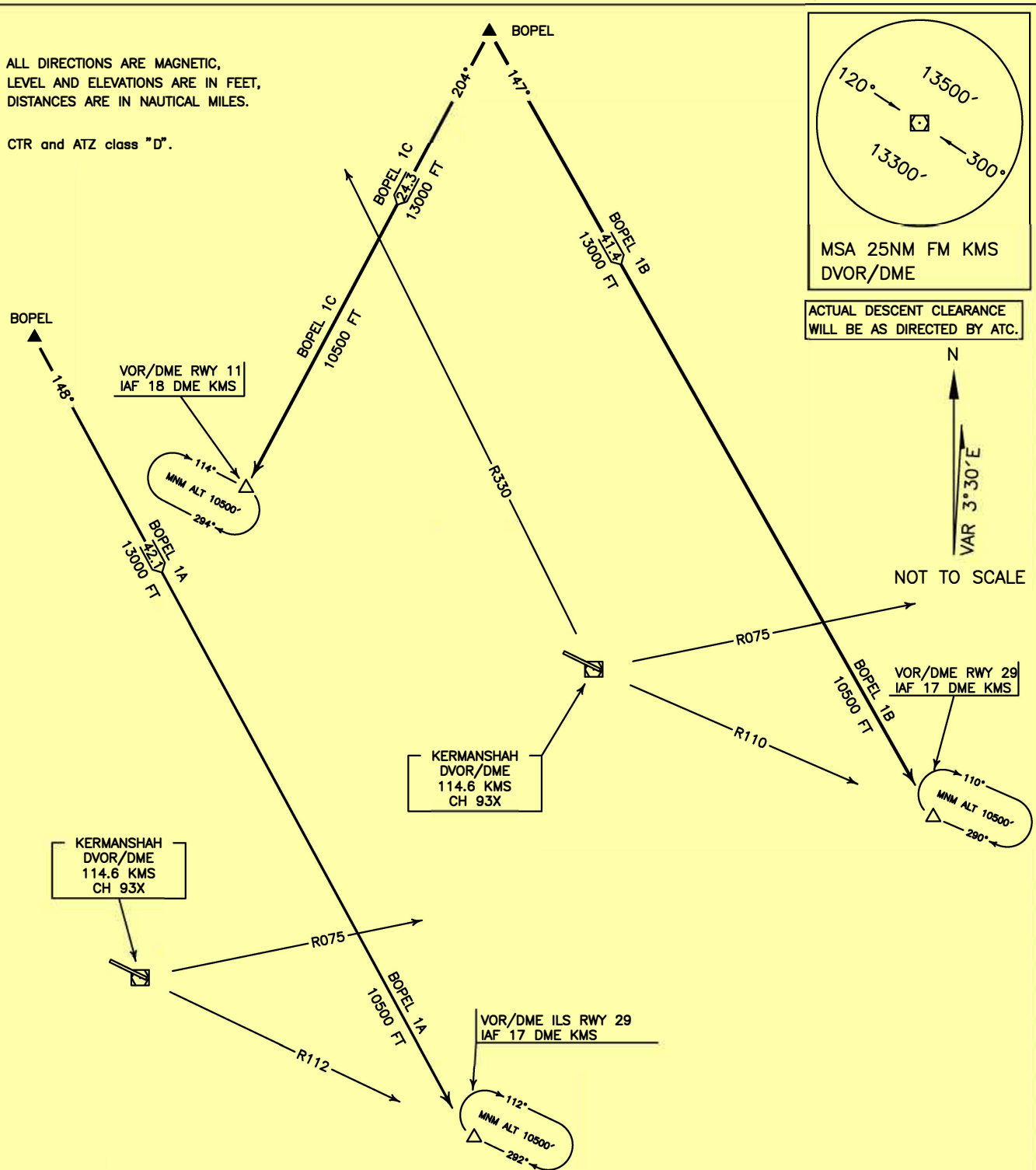
TRANSITION ALTITUDE  
13000 FT

TWR 122.450  
121.900  
ATIS 126.800

KERMANSHAH/  
SHAHID ASHRAFI ESFAHANI  
RWY 11R/29L  
BOPEL 1A/1B/1C

ALL DIRECTIONS ARE MAGNETIC,  
LEVEL AND ELEVATIONS ARE IN FEET,  
DISTANCES ARE IN NAUTICAL MILES.

CTR and ATZ class "D".



**BOPEL 1A ARR:**

FM BOPEL proceed to VOR/DME ILS RWY 29L IAF (RDL 112 -17 DME), MAG TR 148°, DIST 42.1 NM, MNM ALT 13000 FT, after crossing RDL 075 MNM ALT 10500 FT.

**BOPEL 1B ARR:**

FM BOPEL proceed to VOR/DME RWY 29L IAF (RDL 110 -17 DME), MAG TR 147°, DIST 41.4 NM, MNM ALT 13000 FT, after crossing RDL 075, MNM ALT 10500 FT.

**BOPEL 1C ARR:**

FM BOPEL proceed to VOR/DME RWY 11R IAF (RDL 294 -18 DME), MAG TR 204°, DIST 24.3 NM, MNM ALT 13000 FT, after crossing RDL 330, MNM ALT 10500 FT.

STANDARD ARRIVAL CHART—  
INSTRUMENT (STAR)—ICAO

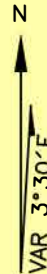
TRANSITION ALTITUDE  
13000 FT

TWR 122.450  
121.900  
ATIS 126.800

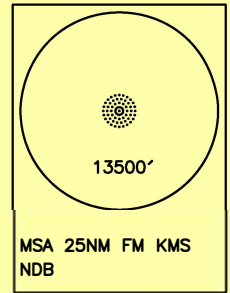
KERMANSHAH/  
SHAHID ASHRAFI ESFAHANI  
RWY 11R/29L  
MOKAB 1H/1J/1K

ALL DIRECTIONS ARE MAGNETIC.  
LEVEL AND ELEVATIONS ARE IN FEET.  
DISTANCES ARE IN NAUTICAL MILES.

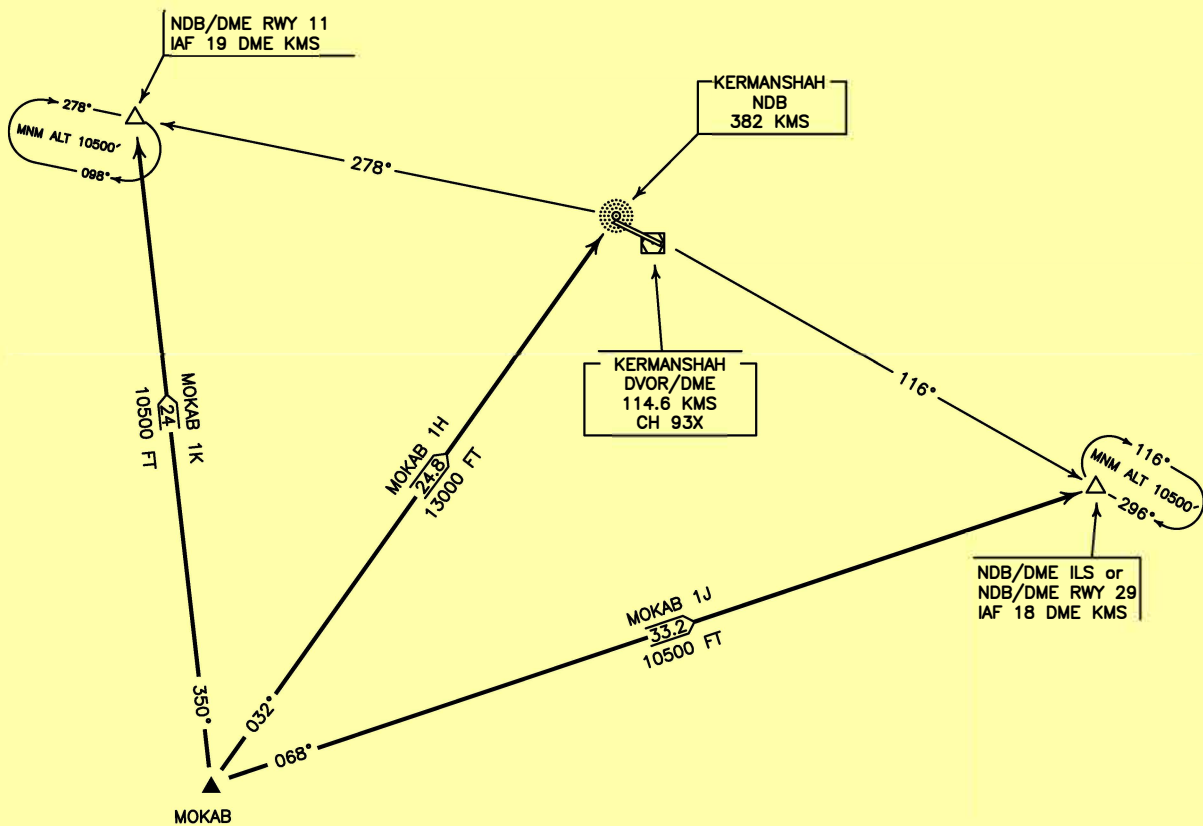
CTR and ATZ class "D".



NOT TO SCALE



ACTUAL DESCENT CLEARANCE  
WILL BE AS DIRECTED BY ATC.



**MOKAB 1H ARR:**

FM MOKAB proceed to overhead KMS NDB, MAG TR 032°, DIST 24.8 NM, MNM ALT 13000 FT.

**MOKAB 1J ARR:**

FM MOKAB proceed to NDB/DME ILS or NDB/DME RWY 29L IAF (BRG 116° MAG-18 DME),  
MAG TR 068°, DIST 33.2 NM, MNM ALT 10500 FT.

**MOKAB 1K ARR:**

FM MOKAB proceed to NDB/DME RWY 11R IAF (BRG 278° MAG-19 DME), MAG TR 350°,  
DIST 24 NM, MNM ALT 10500 FT.

STANDARD ARRIVAL CHART-  
INSTRUMENT (STAR)-ICAO

TRANSITION ALTITUDE  
13000 FT

TWR 122.450  
121.900  
ATIS 126.800

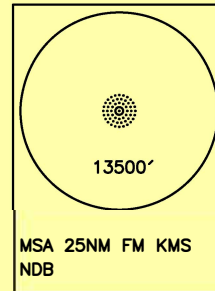
KERMANSHAH/  
SHAHID ASHRAFI ESFAHANI  
RWY 11R/29L  
ASRIL 1H/1J/1K

ALL DIRECTIONS ARE MAGNETIC.  
LEVEL AND ELEVATIONS ARE IN FEET.  
DISTANCES ARE IN NAUTICAL MILES.

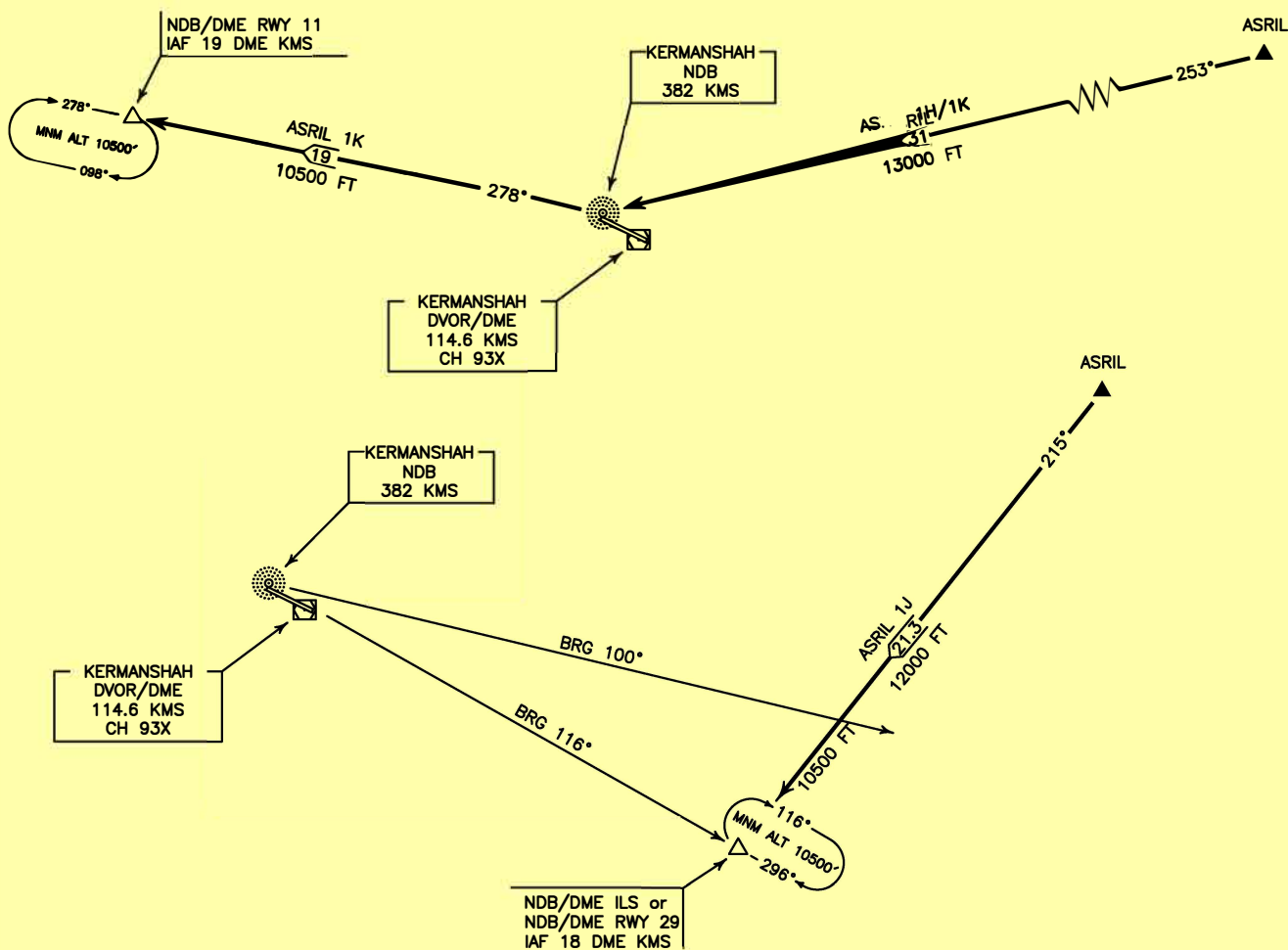
CTR and ATZ class "D".

N  
VAR 3°30'E

NOT TO SCALE



ACTUAL DESCENT CLEARANCE  
WILL BE AS DIRECTED BY ATC.



**ASRIL 1H ARR:**

FM ASRIL proceed to overhead KMS NDB, MAG TR 253°, DIST 31 NM, MNM ALT 13000 FT.

**ASRIL 1J ARR:**

FM ASRIL proceed to NDB/DME ILS or NDB/DME RWY 29L IAF (BRG 116° MAG-18 DME), MAG TR 215°, DIST 21.3 NM, MNM ALT 12000 FT, after crossing BRG 100° MNM level 10500 FT.

**ASRIL 1K ARR:**

FM ASRIL proceed to NDB/DME RWY 11R IAF (BRG 278° MAG-19 DME) via overhead KMS NDB, MAG TR 253°, DIST 31 NM, MNM ALT 13000 FT, then MAG TR 278°, DIST 19 NM, MNM ALT 10500 FT.



STANDARD ARRIVAL CHART—  
INSTRUMENT (STAR)—ICAO

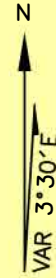
TRANSITION ALTITUDE  
13000 FT

TWR 122.450  
121.900  
ATIS 126.800

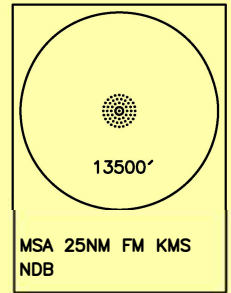
KERMANSHAH/  
SHAHID ASHRAFI ESFAHANI  
RWY 11R/29L  
BUBAV 1H/1J/1K

ALL DIRECTIONS ARE MAGNETIC,  
LEVEL AND ELEVATIONS ARE IN FEET,  
DISTANCES ARE IN NAUTICAL MILES.

CTR and ATZ class "D".



NOT TO SCALE



ACTUAL DESCENT CLEARANCE  
WILL BE AS DIRECTED BY ATC.

NDB/DME RWY 11  
IAF 19 DME KMS



BUBAV 1K  
19  
10500 FT

KERMANSHAH  
NDB  
382 KMS

KERMANSHAH  
DVOR/DME  
114.6 KMS  
CH 93X

BRG 116°

NDB/DME ILS or  
NDB/DME RWY 29  
IAF 18 DME KMS



BUBAV 1J  
13.7  
11000 FT

BUBAV 1H/1K  
31.6  
13000 FT

BUBAV

**BUBAV 1H ARR:**

FM BUBAV proceed to overhead KMS NDB, MAG TR 310°, DIST 31.6 NM, MNM ALT 13000 FT.

**BUBAV 1J ARR:**

FM BUBAV proceed to NDB/DME ILS or NDB/DME RWY 29L IAF (BRG 116° MAG-18 DME), MAG TR 331°, DIST 13.7 NM, MNM ALT 11000 FT.

**BUBAV 1k ARR:**

FM BUBAV proceed to NDB/DME RWY 11R IAF (BRG 278° MAG-19 DME) via overhead MAG TR 310°, DIST 31.6 NM, MNM ALT 13000 FT, then MAG TR 278° to IAF, DIST 19 NM, MNM ALT 10500 FT.

STANDARD ARRIVAL CHART—  
INSTRUMENT (STAR)—ICAO

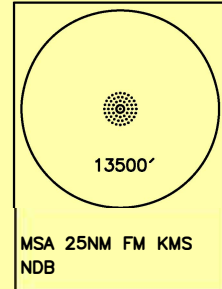
TRANSITION ALTITUDE  
13000 FT

TWR 122.450  
121.900  
ATIS 126.800

KERMANSHAH/  
SHAHID ASHRAFI ESFAHANI  
RWY 11R/29L  
BOPEL 1H/1J/1K

ALL DIRECTIONS ARE MAGNETIC.  
LEVEL AND ELEVATIONS ARE IN FEET.  
DISTANCES ARE IN NAUTICAL MILES.

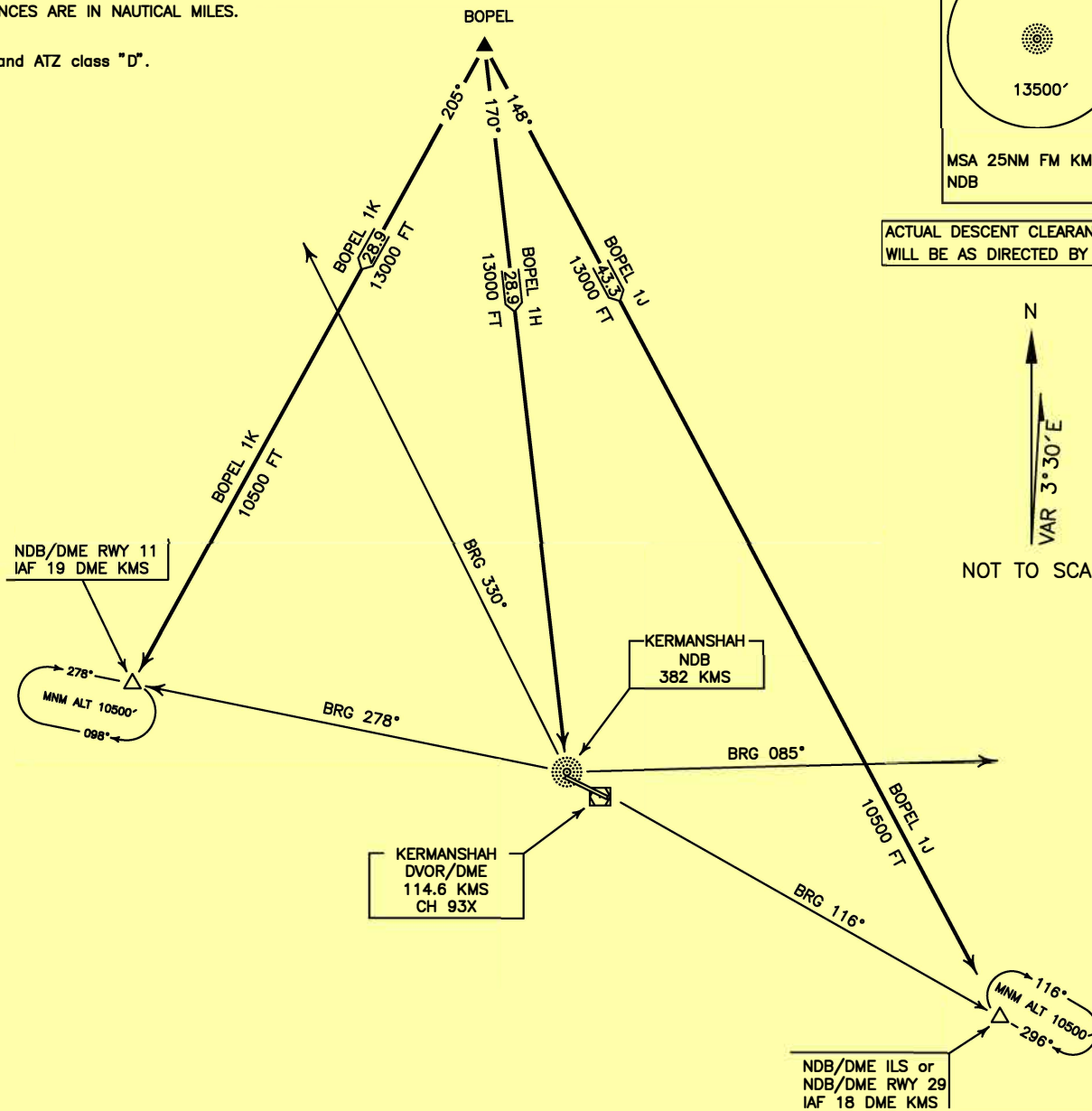
CTR and ATZ class "D".



ACTUAL DESCENT CLEARANCE  
WILL BE AS DIRECTED BY ATC.



NOT TO SCALE



**BOPEL 1H ARR:**

FM BOPEL proceed to overhead KMS NDB, MAG TR 170°, DIST 28.9 NM, MNM ALT 13000 FT.

**BOPEL 1J ARR:**

FM BOPEL proceed to NDB/DME ILS or NDB/DME RWY 29L IAF (BRG 116° MAG-18 DME), MAG TR 148°, DIST 43.3 NM, MNM ALT 13000 FT, after crossing BRG 085° MAG, MNM ALT 10500 FT.

**BOPEL 1K ARR:**

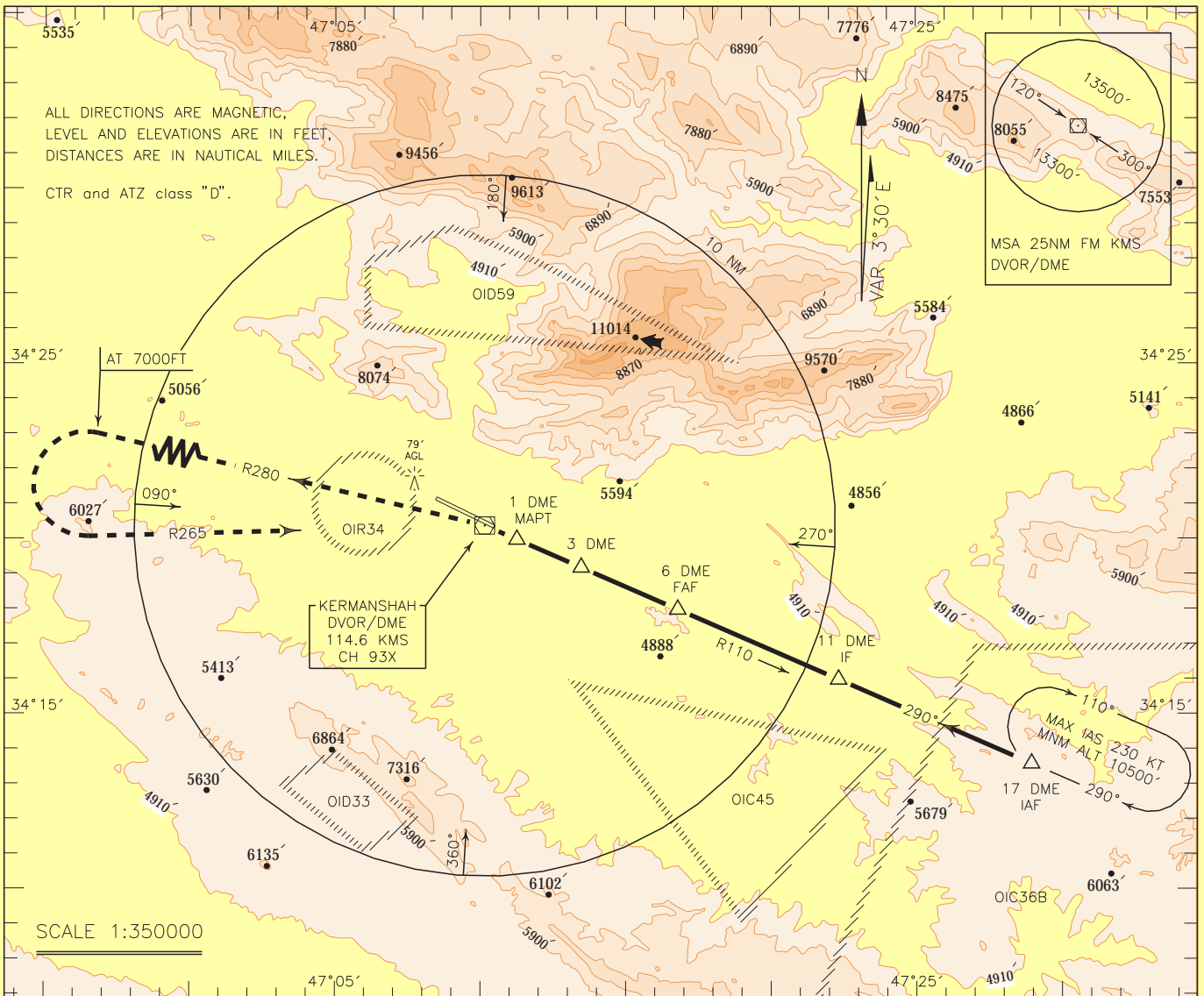
FM BOPEL proceed to NDB/DME RWY 11R IAF (BRG 278° MAG-19 DME), MAG TR 205°, DIST 28.9 NM, MNM ALT 13000 FT, after crossing BRG 330° MAG, MNM ALT 10500 FT.

INSTRUMENT  
APPROACH  
CHART-ICAO

AERODROME ELEV. 4301 FT  
HEIGHTS RELATED TO  
AERODROME ELEVATION

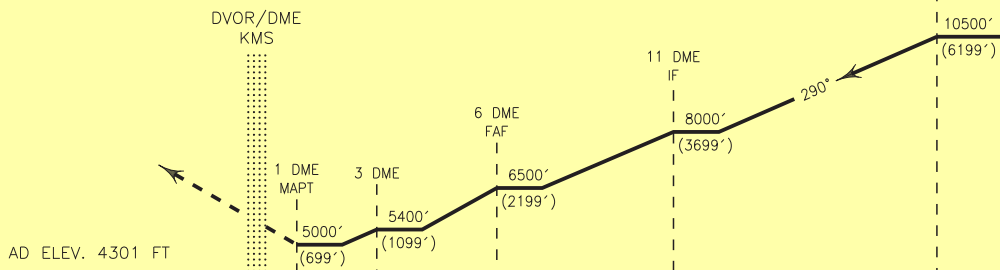
TWR 122.450  
121.900  
ATIS 126.800

KERMANSHAH/  
SHAHID ASHRAFI ESFAHANI  
VOR/DME RWY 29L  
CAT A/B/C/D



**MISSED APPROACH:** At 1 DME climb straight ahead to DVOR/DME, then climb on RDL 280 to 7000 FT, then turn left (MAX IAS 185 KT) climb on RDL 265 to DVOR/DME and rejoin HLDG at 10500 FT.

TA 13000'



5 4 3 2 1 0 5 10 15 NM FM THR RWY 29L

**NOTE:**

- 1-Circling not authorized to the north of AD.
- 2-Contour intervals are to be selected at 990 FT (300 M).

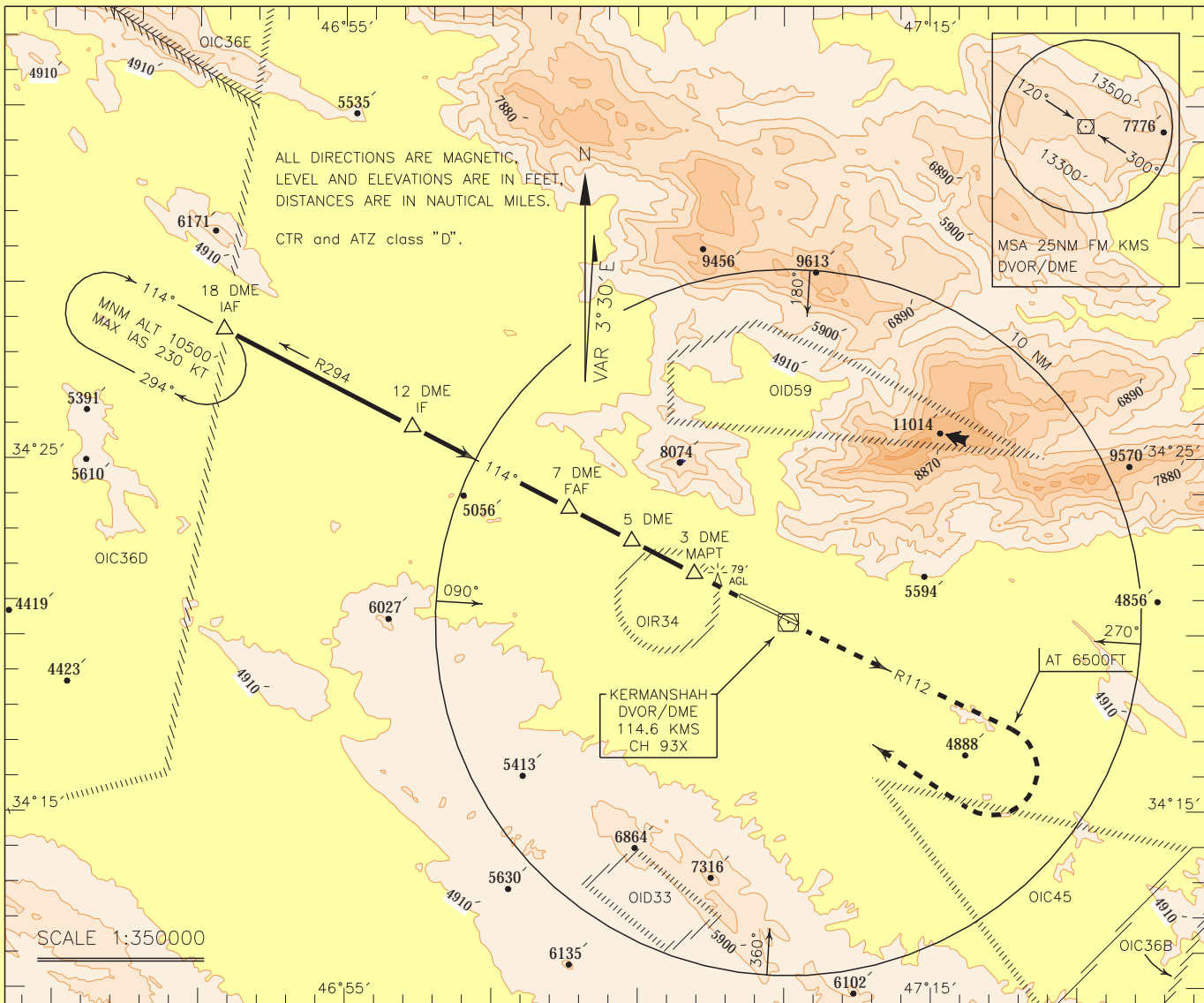
OCA(H)	A	B	C	D
Straight	5000' (699')			
Circling	5100' (799')	5200' (899')	5400' (1099')	5580' (1279')

INSTRUMENT  
APPROACH  
CHART-ICAO

AERODROME ELEV. 4301 FT  
HEIGHTS RELATED TO  
AERODROME ELEVATION

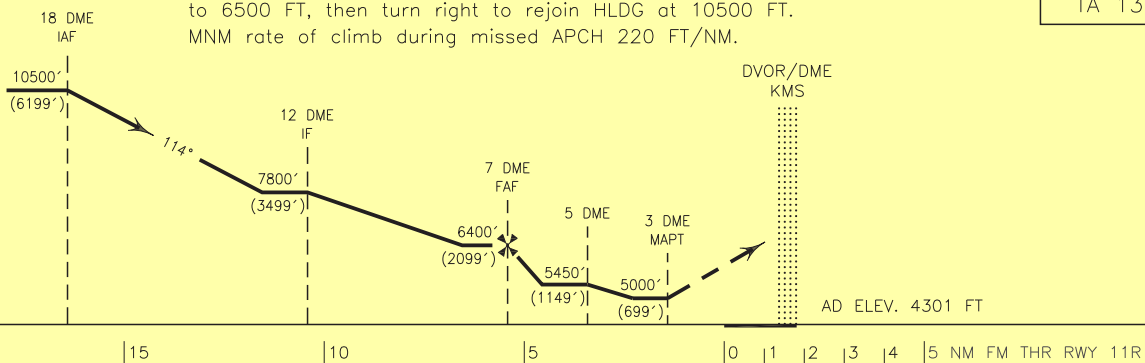
TWR 122.450  
121.900  
ATIS 126.800

KERMANSHAH/  
SHAHID ASHRAFI ESFAHANI  
VOR/DME RWY 11R  
CAT A/B/C/D



MISSED APPROACH: At 3 DME climb straight to over DVOR/DME, intercept RDL 112 and climb to 6500 FT, then turn right to rejoin HLDG at 10500 FT.  
MNM rate of climb during missed APCH 220 FT/NM.

TA 13000'



NOTE:

- 1-Circling not authorized to the north of AD.
- 2-Contour intervals are to be selected at 990 FT (300 M).

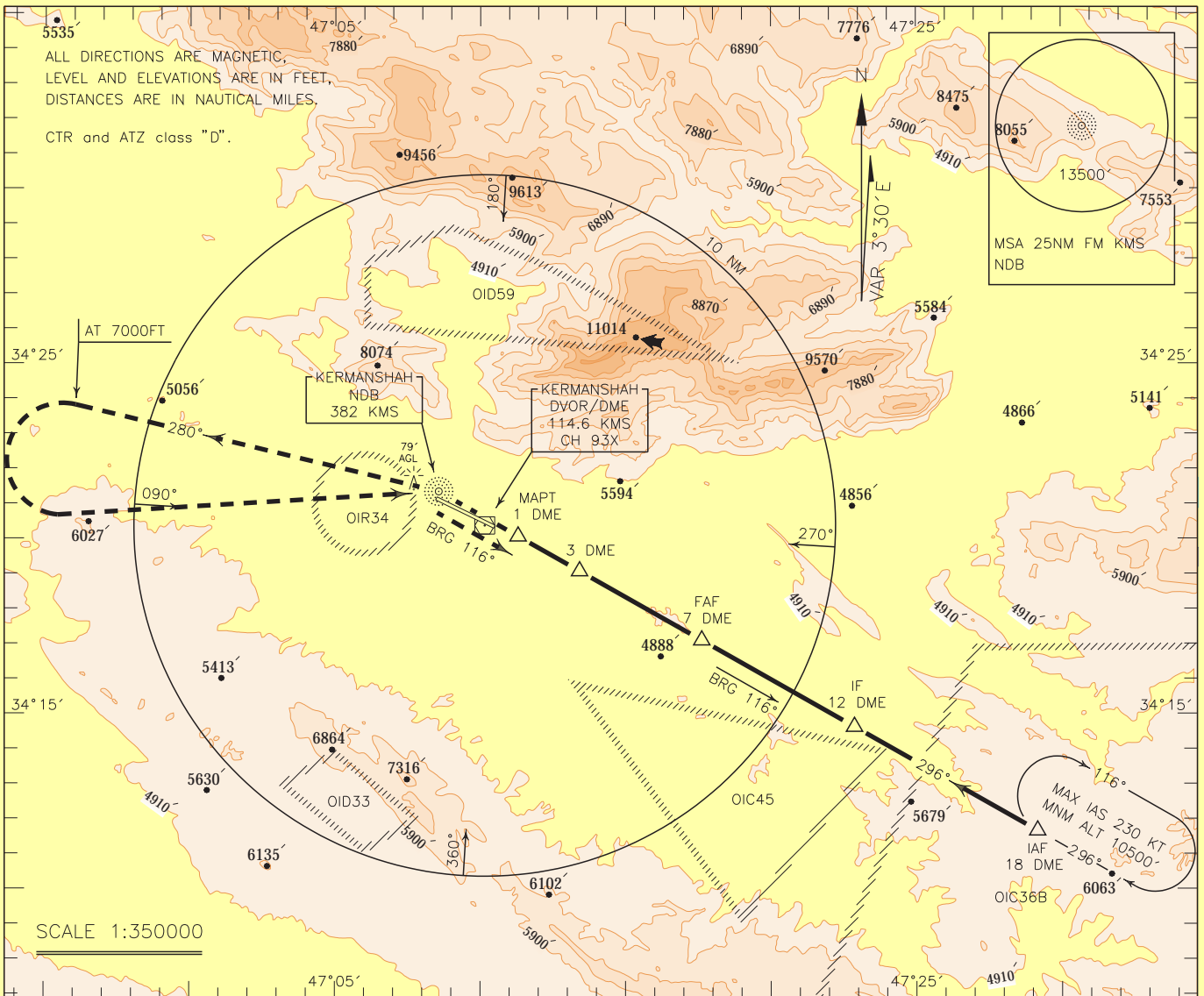
OCA(H)	A	B	C	D
Straight	5000' (699')			
Circling	5100' (799')	5200' (899')	5400' (1099')	5580' (1279')

INSTRUMENT  
APPROACH  
CHART-ICAO

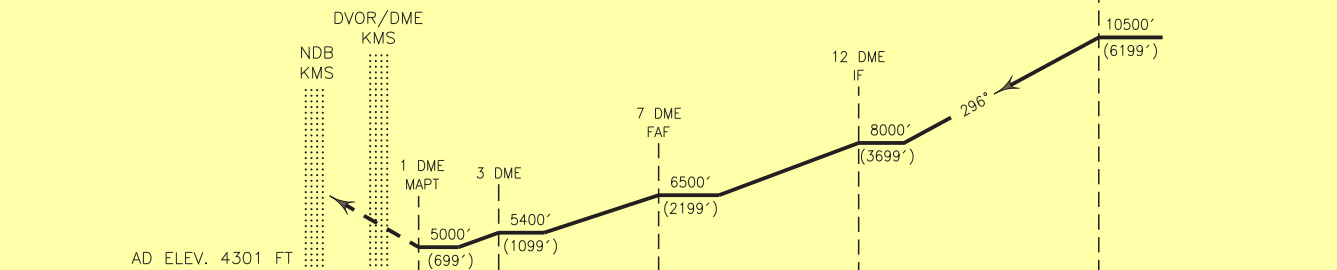
AERODROME ELEV. 4301 FT  
HEIGHTS RELATED TO  
AERODROME ELEVATION

TWR 122.450  
121.900  
ATIS 126.800

KERMANSHAH/  
SHAHID ASHRAFI ESFAHANI  
NDB/DME 1 RWY 29L  
CAT A/B/C/D



MISSED APPROACH: At 1 DME climb to overhead NDB, then climb on BRG 280° MAG to 7000 FT, then turn left to cross overhead NDB to establish BRG 116° MAG to rejoin HLDG at 10500 FT. TA 13000'



NOTE:  
1-Circle to land not authorized BTN BRG 315° and BRG 100° clockwise.  
2-Contour intervals are to be selected at 990 FT (300 M).

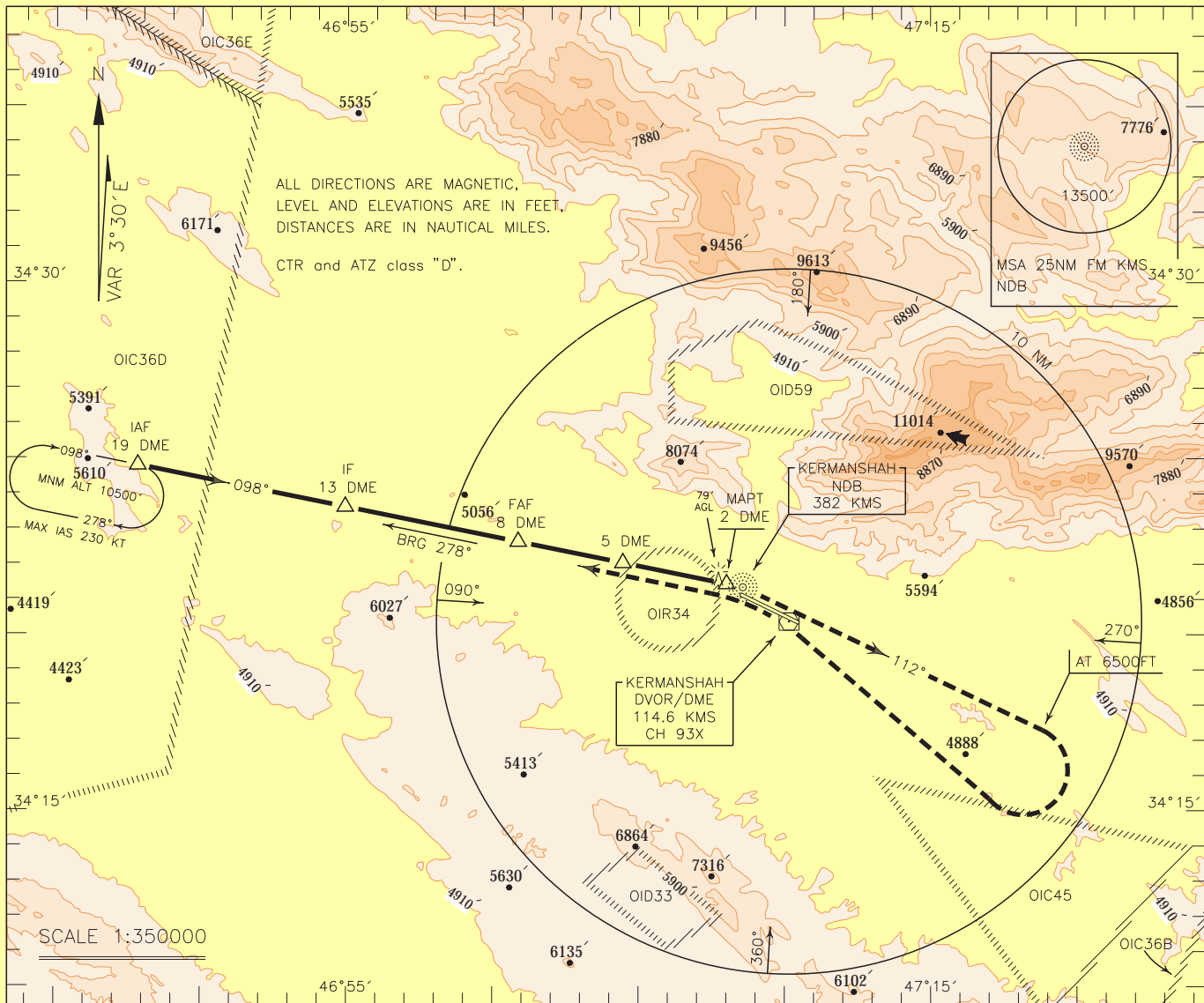
OCA(H)	A	B	C	D
Straight	5000' (699')			
Circling	5100' (799')	5200' (899')	5400' (1099')	5580' (1279')

INSTRUMENT  
APPROACH  
CHART-ICAO

AERODROME ELEV. 4301 FT  
HEIGHTS RELATED TO  
AERODROME ELEVATION

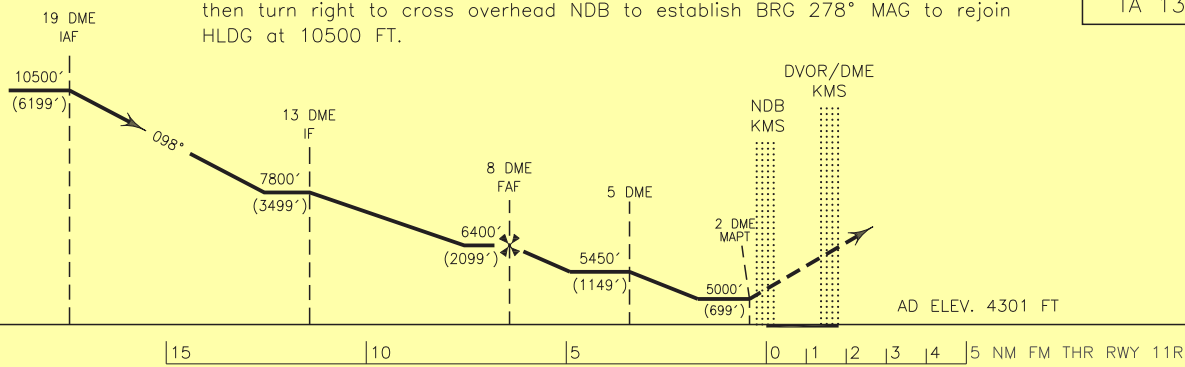
TWR 122.450  
121.900  
ATIS 126.800

KERMANSHAH/  
SHAHID ASHRAFI ESFAHANI  
NDB/DME 2 RWY 11R  
CAT A/B/C/D



**MISSED APPROACH:** At 2 DME climb to overhead NDB, then climb on BRG 112° MAG to 6500 FT, then turn right to cross overhead NDB to establish BRG 278° MAG to rejoin HLDG at 10500 FT.

TA 13000'



**NOTE:**  
1-Circle to land not authorized BTN BRG 315° and BRG 100° clockwise.  
2-Contour intervals are to be selected at 990 FT (300 M).

OCA(H)	A	B	C	D
Straight	5000' (699')			
Circling	5100' (799')	5200' (899')	5400' (1099')	5580' (1279')

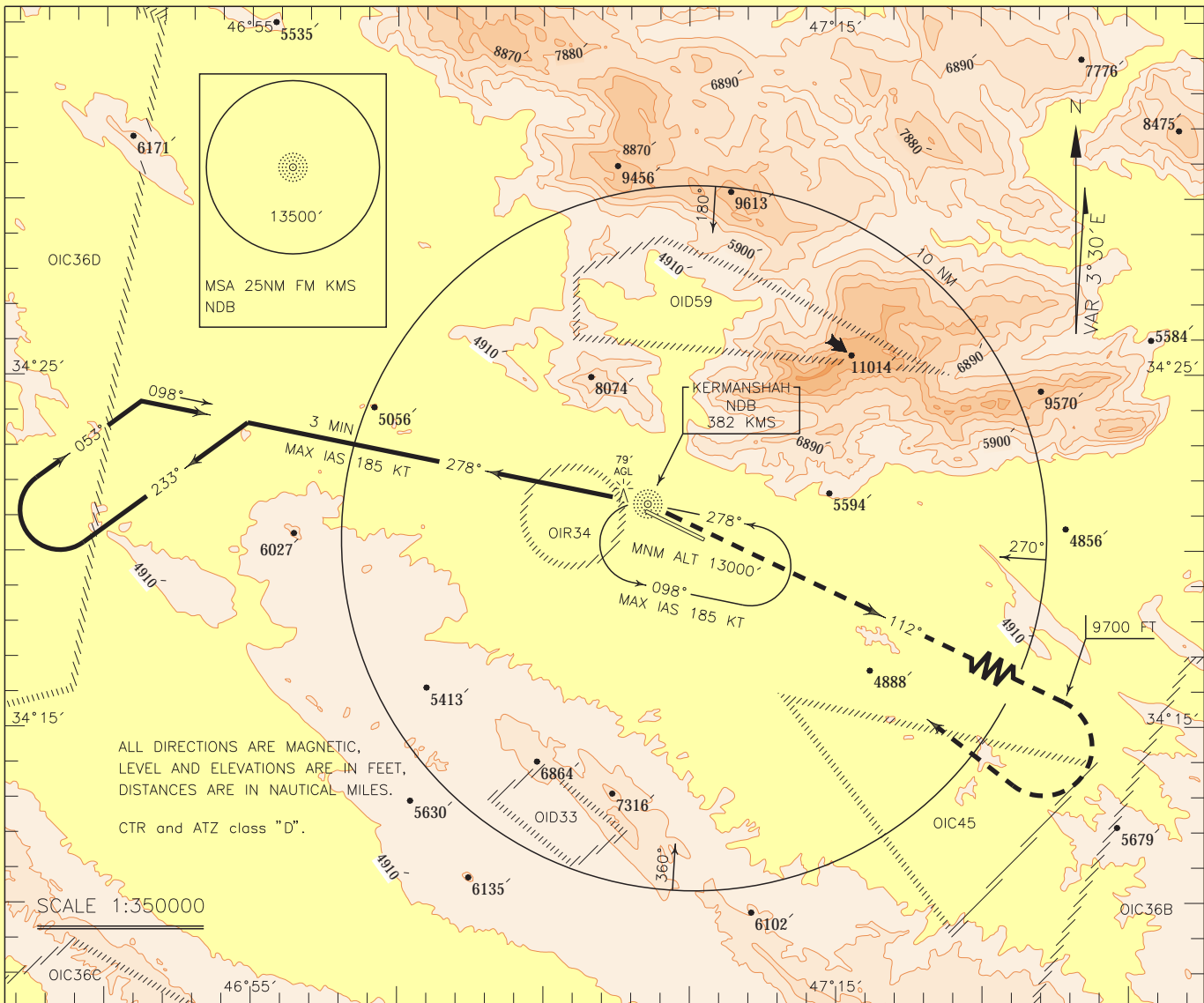


INSTRUMENT  
APPROACH  
CHART-ICAO

AERODROME ELEV. 4301 FT  
HEIGHTS RELATED TO  
AERODROME ELEVATION

TWR 122.450  
121.900  
ATIS 126.800

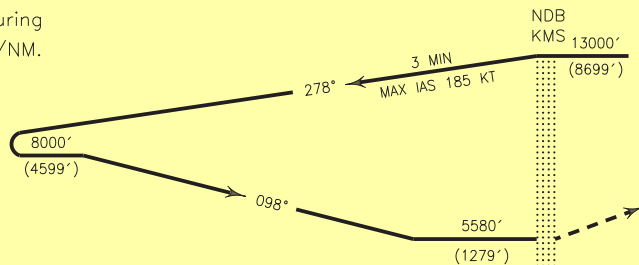
KERMANSHAH/  
SHAHID ASHRAFI ESFAHANI  
CIRCLING NDB 2  
CAT C/D



MISSED APPROACH: Over NDB climb on BRG 112° MAG to 9700 FT, then turn right to rejoin HLDG at 13000 FT.

TA 13000'

NOTE:  
MNM rate of climb during missed APCH 220 FT/NM.



15 | 10 | 5 | 0 | 1 | 2 | 3 | 4 | 5 NM FM THR RWY 11R

NOTE:  
1-Circle to land not authorized BTN BRG 315° and BRG 100° clockwise.  
2-Contour intervals are to be selected at 990 FT (300 M).

OCA(H)	A	B	C	D
Straight				
Circling			5580' (1279')	