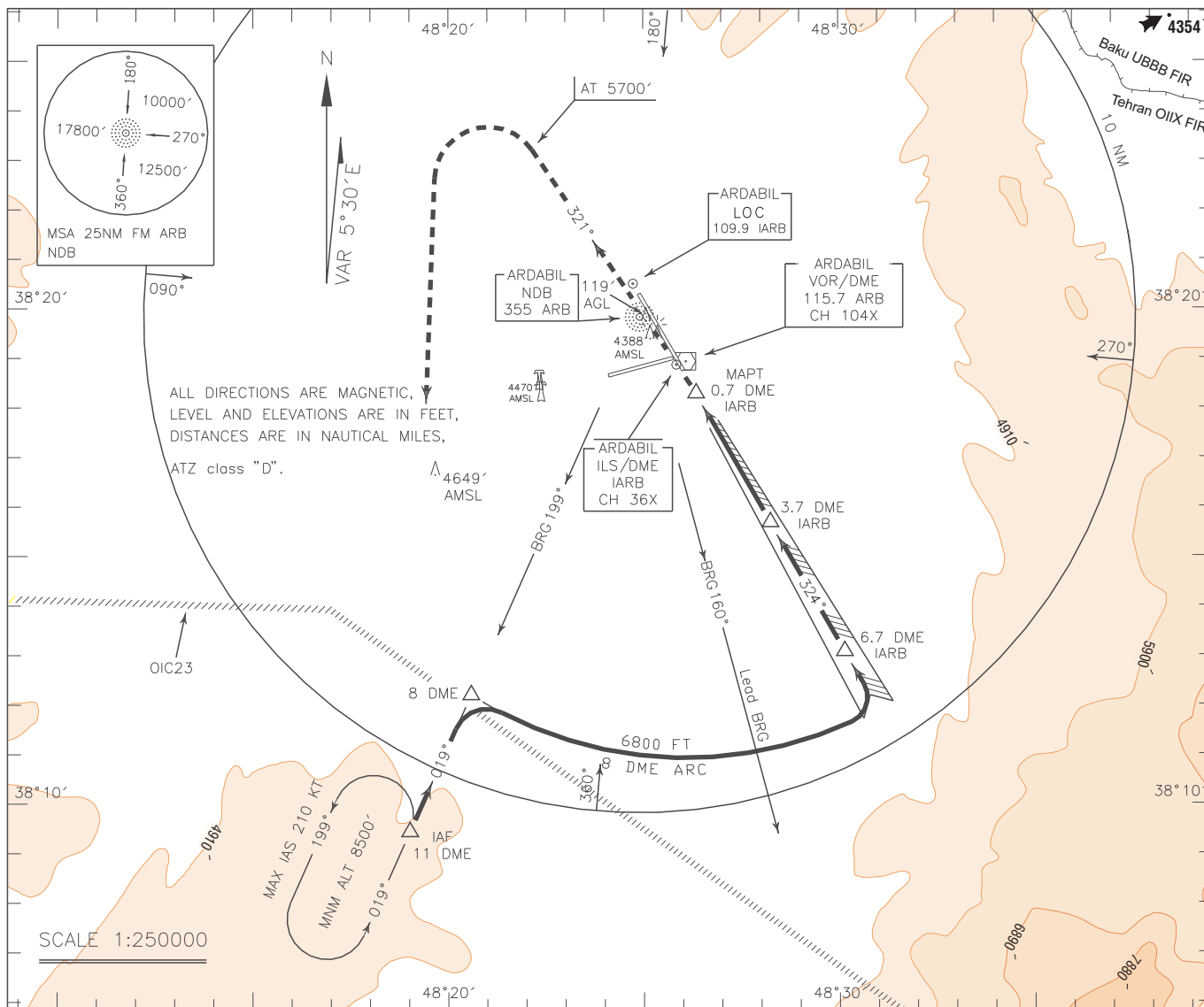


INSTRUMENT
APPROACH
CHART-ICAO

AERODROME ELEV. 4319 FT
HEIGHTS RELATED TO
THR RWY 33 ELEV. 4303 FT

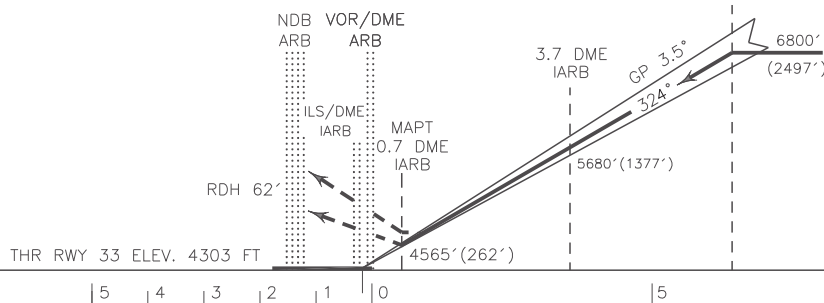
TWR 118.150, 121.900
ATIS 126.650

ARDABIL
ILS Y RWY 33
CAT A/B/C/D



MISSED APPROACH: AT 0.7 DME IARB climb straight to NDB, then establish BRG 321° to 5700 FT, then turn left to rejoin HLDG at 8500 FT.

TA 11500'



NOTE:

- 1- Caution Azerbaijanian border approximately 10 NM NE of airport.
- 2- This procedure lies within OIC23.
- 3- Contour intervals are to be selected at 990 FT (300 M).

OCA(H)	A	B	C	D
Straight		4565' (262')		
GP INOP		4800' (497')		
Circling	5100' (781')		5600' (1281')	