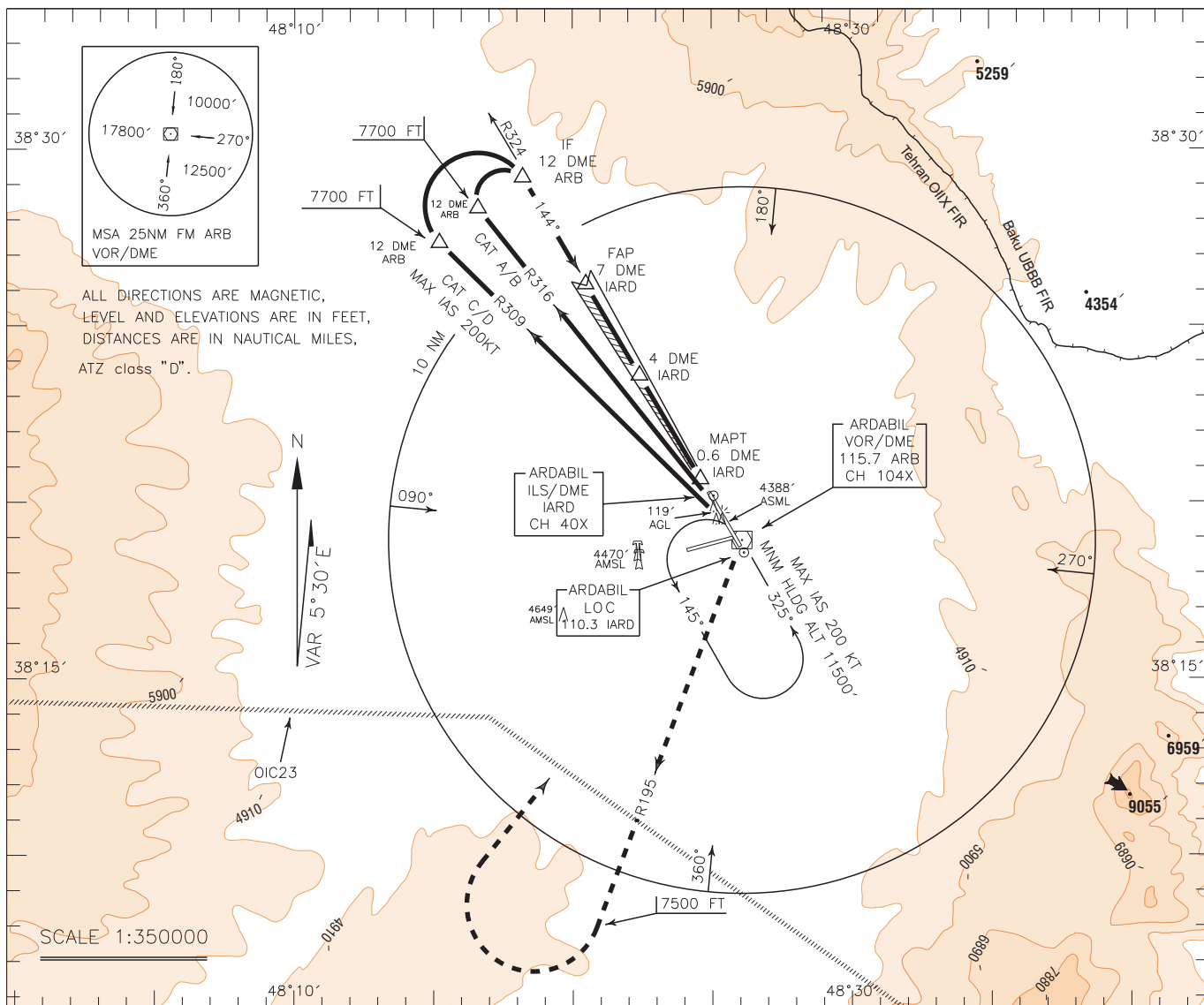


INSTRUMENT
APPROACH
CHART-ICAO

AERODROME ELEV. 4319 FT
HEIGHTS RELATED TO
THR RWY 15 ELEV. 4296 FT

TWR 118.150, 121.900
ATIS 126.650

ARDABIL
ILS Z RWY 15
CAT A/B/C/D

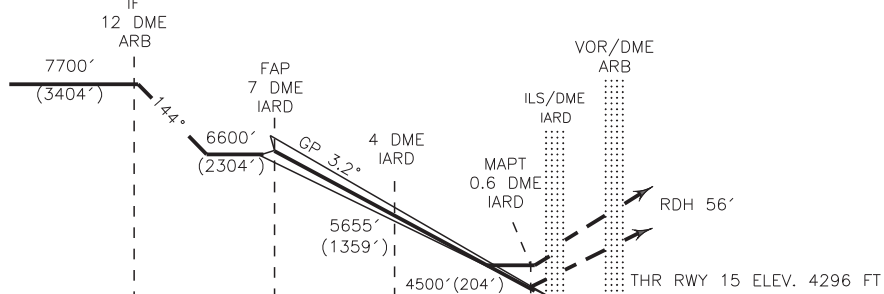


MISSED APPROACH: AT 0.6 DME IARD proceed to ARB VOR/DME, then turn right climb on RDL 195 to 7500 FT, then turn right to rejoin HLDG at 11500 FT.

TA 11500'

NOTE:

MNM rate of climb during missed APCH 230 FT/NM.



15 10 5 0 1 2 3 4 5 NM FM THR RWY 15

NOTE:

- 1- Caution Azerbaijanian border approximately 10 NM NE of airport.
- 2- This procedure lies within OIC23.
- 3- Contour intervals are to be selected at 990 FT (300 M).

OCA(H)	A	B	C	D
Straight	4500'(204')			
GP INOP	4850'(554')			
Circling	5100'(781')		5600'(1281')	