

STANDARD ARRIVAL CHART-  
INSTRUMENT (STAR)-ICAO

TRANSITION LEVEL FL 160
TRANSITION ALTITUDE 14000 FT

INFO 118.800 121.600
-------------------------

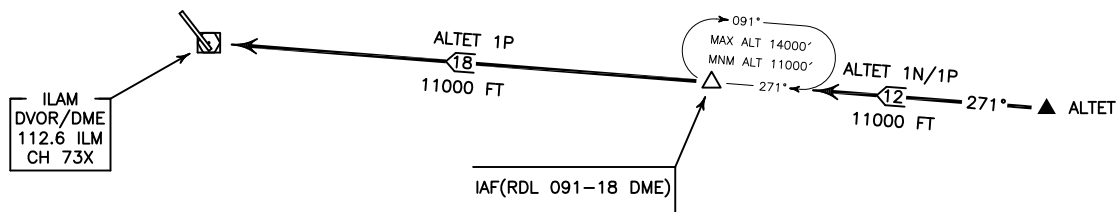
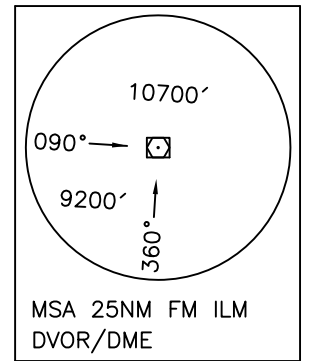
ILAM  
RWY 14/32  
ALTET 1N/1P

ALL DIRECTIONS ARE MAGNETIC,  
LEVEL AND ELEVATIONS ARE IN FEET,  
DISTANCES ARE IN NAUTICAL MILES.

ATZ class "G".



NOT TO SCALE



**ALTET 1N ARR:**

FM ALTET proceed to IAF (RDL 091-18 DME), MAG TR 271°, DIST 12 NM, MNM ALT 11000 FT.

**ALTET 1P ARR:**

FM ALTET proceed to DVOR/DME, MAG TR 271°, DIST 30 NM, MNM ALT 11000 FT.