

STANDARD DEPARTURE CHART-  
INSTRUMENT (SID)-ICAO

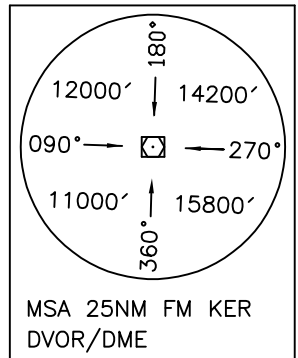
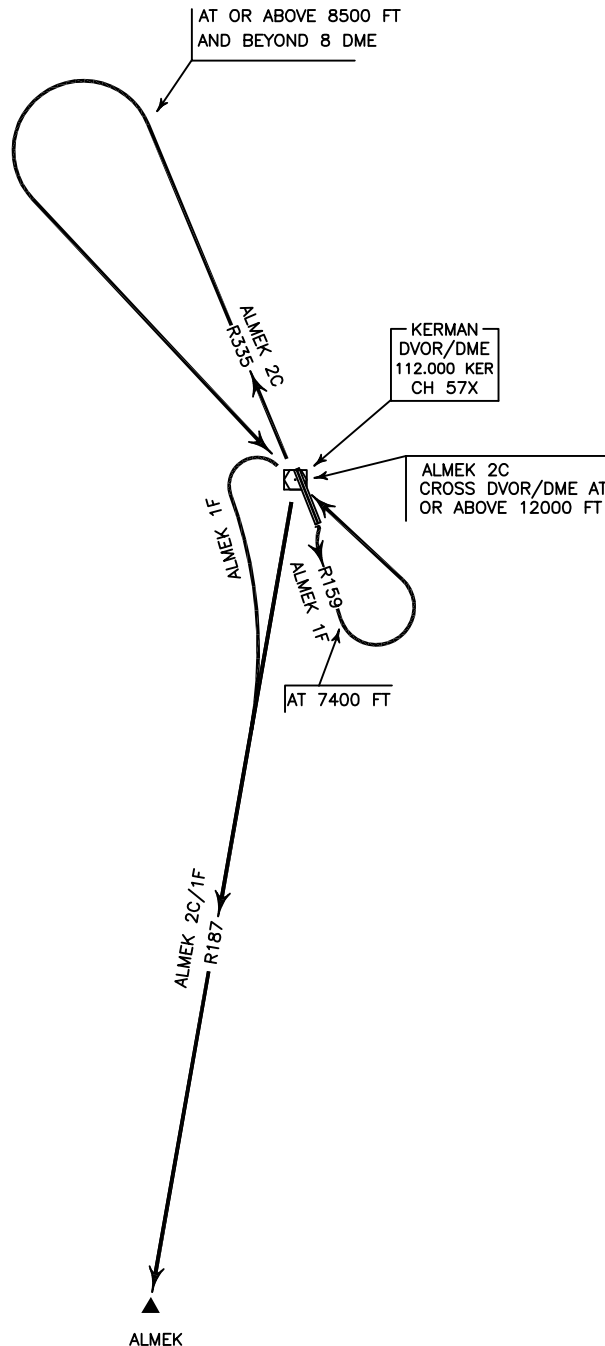
TRANSITION ALTITUDE  
15000 FT

TWR 118.250, 121.900  
ATIS 127.250

KERMAN  
RWY 16R/34L  
ALMEK 2C/1F

ALL DIRECTIONS ARE MAGNETIC,  
LEVEL AND ELEVATIONS ARE IN FEET,  
DISTANCES ARE IN NAUTICAL MILES.

CTR and ATZ class "D".



MSA 25NM FM KER  
DVOR/DME

N  
VAR 3°E  
NOT TO SCALE

**ALMEK 2C DEP:**

DEP RWY 34L - After take off intercept RDL 335, at or above 8500 FT and beyond 8 DME FM KER DVOR/DME turn left to cross overhead at KER DVOR/DME at or above 12000 FT, then intercept RDL 187 to ALMEK and climb to cleared level.

**ALMEK 1F DEP:**

DEP RWY 16R - After take off intercept RDL 159, at 7400 FT turn left to overhead KER DVOR/DME then turn left to intercept RDL 187 to ALMEK and climb to cleared level.  
MNM rate of climb 280 FT/NM.