

STANDARD DEPARTURE CHART-
INSTRUMENT (SID)-ICAO

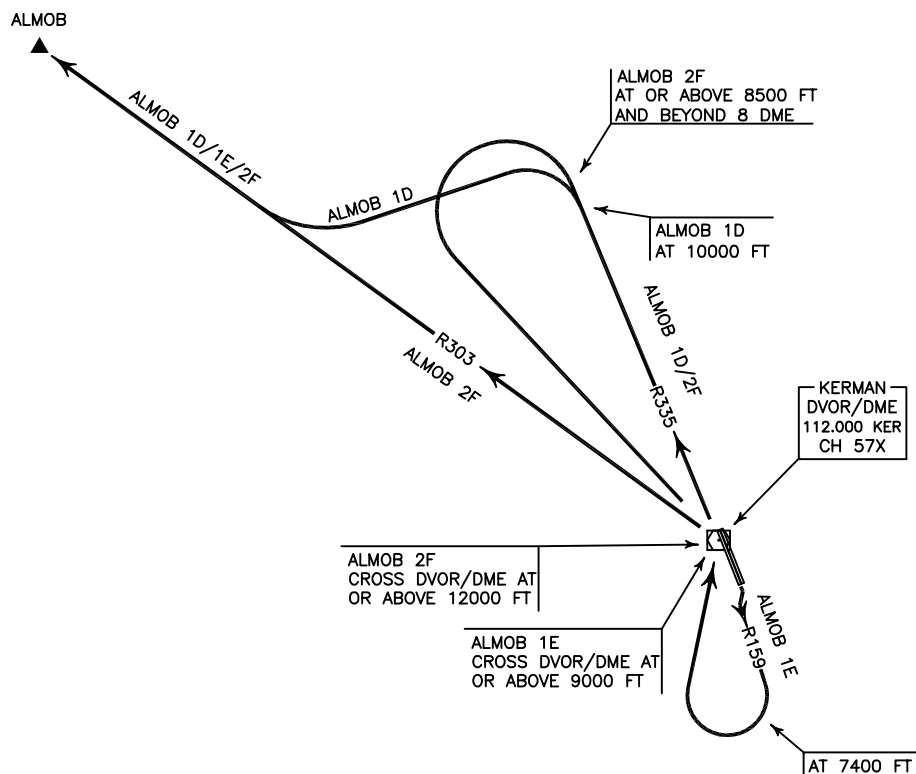
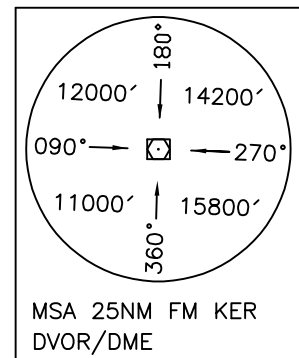
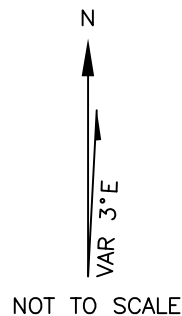
TRANSITION ALTITUDE
15000 FT

TWR 118.250, 121.900
ATIS 127.250

KERMAN
RWY 16R/34L
ALMOB 1D/1E/2F

ALL DIRECTIONS ARE MAGNETIC,
LEVEL AND ELEVATIONS ARE IN FEET,
DISTANCES ARE IN NAUTICAL MILES.

CTR and ATZ class "D".



ALMOB 1D DEP:

DEP RWY 34L - After take off intercept RDL 335, at 10000 FT turn left to intercept RDL 303 to ALMOB and climb to cleared level.
MNM rate of climb 330 FT/NM.

ALMOB 1E DEP:

DEP RWY 16R - After take off intercept RDL 159, at 7400 FT turn right to cross overhead KER DVOR/DME at or above 9000 FT, then turn left to intercept RDL 303 to ALMOB and climb to cleared level.
MNM rate of climb 310 FT/NM.

ALMOB 2F DEP:

DEP RWY 34L - After take off intercept RDL 335, at 8500 FT and beyond 8 DME FM KER DVOR/DME turn left to cross overhead KER DVOR/DME at or above 12000 FT, then turn left intercept RDL 303 to ALMOB and climb to cleared level.