

STANDARD ARRIVAL CHART-  
INSTRUMENT (STAR)-ICAO

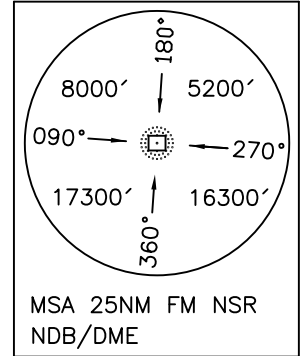
TRANSITION ALTITUDE  
11500 FT

TWR 118.250  
121.700

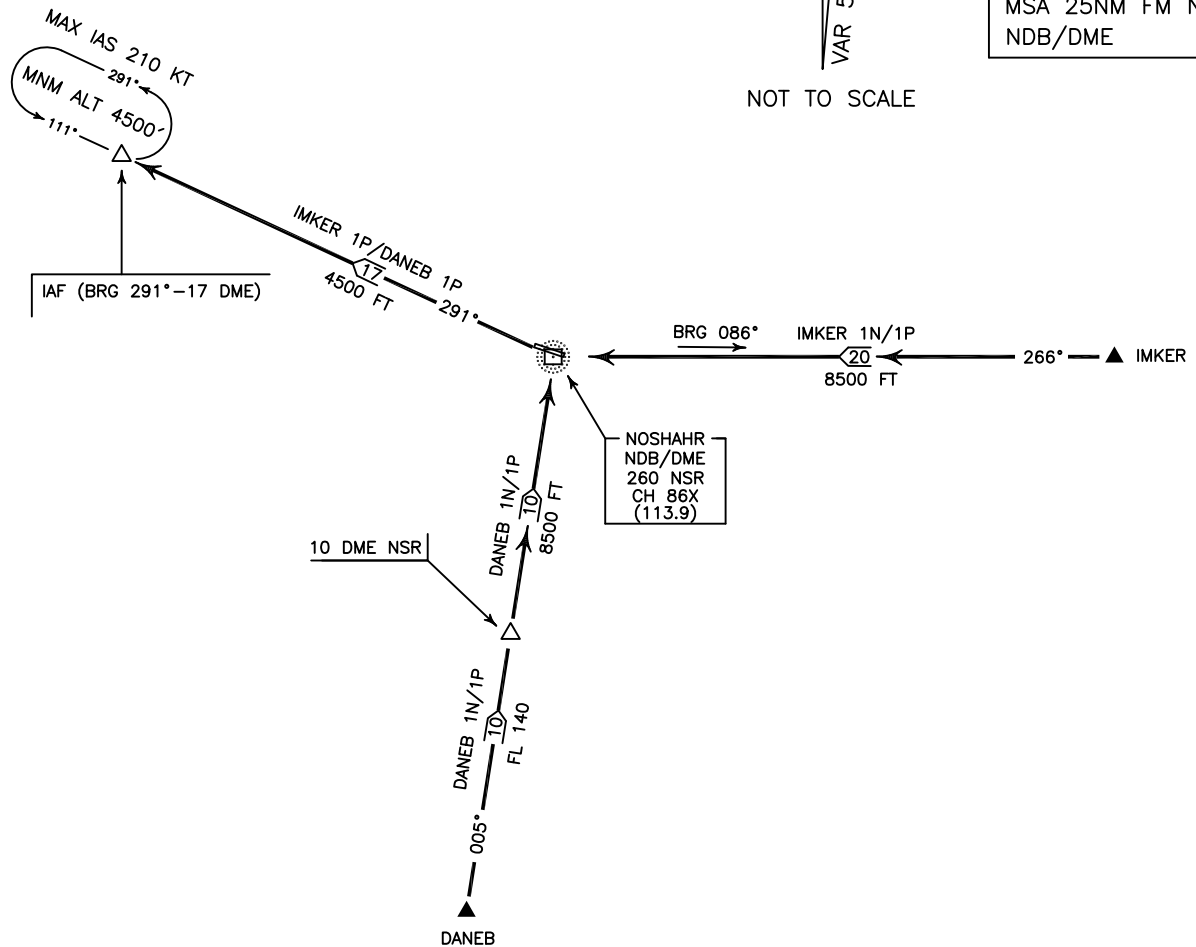
NOSHAHR  
IMKER 1N/1P  
DANEB 1N/1P

ALL DIRECTIONS ARE MAGNETIC,  
LEVEL AND ELEVATIONS ARE IN FEET,  
DISTANCES ARE IN NAUTICAL MILES.

CTR,ATZ class "D".



N  
VAR 5°E  
NOT TO SCALE



**IMKER 1N ARR:**

FM IMKER proceed to overhead NSR NDB/DME, MAG TR 266°, DIST 20 NM, MNM ALT 8500 FT.

**IMKER 1P ARR:**

FM IMKER proceed to IAF (BRG 291°-17 DME) via overhead NSR NDB/DME, MAG TR 266°, DIST 20 NM, MNM ALT 8500, after overhead MAG TR 291°, DIST 17 DME, MNM ALT 4500 FT.

**DANEB 1N ARR:**

FM DANEB proceed to overhead NSR NDB/DME, MAG TR 005°, DIST 20 NM, MNM FL 140 up to 10 DME then MNM ALT 8500 FT.

**DANEB 1P ARR:**

FM DANEB proceed to IAF (BRG 291°-17 DME) via overhead NSR NDB/DME MAG TR 005°, DIST 20 NM, MNM FL 140 up to 10 DME, then MNM ALT 8500 FT, after overhead MAG TR 291°, DIST 17 DME, MNM ALT 4500 FT.