

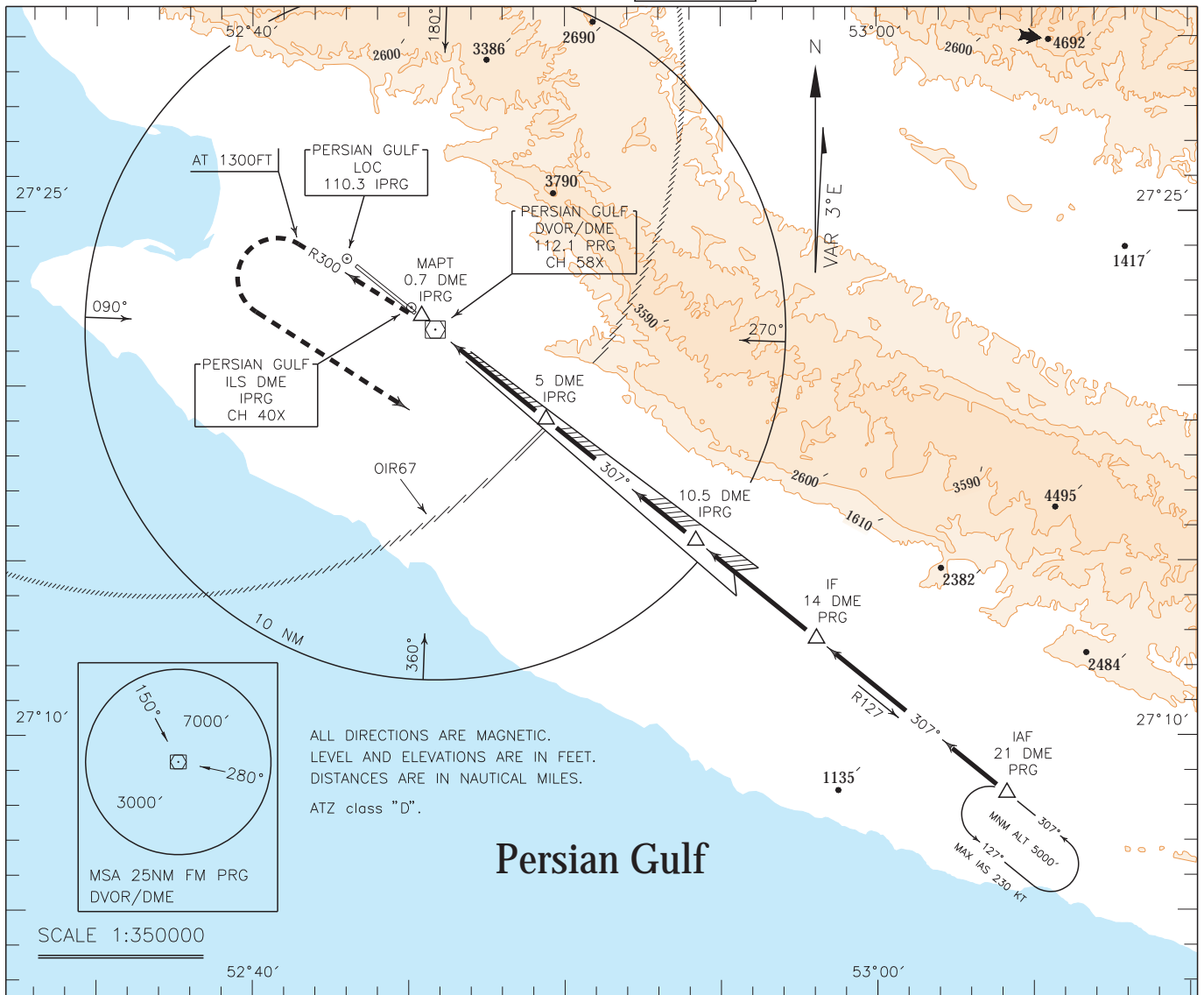
PARS SPECIAL ENERGY ECONOMY ZONE/PERSIAN GULF

INSTRUMENT  
APPROACH  
CHART-ICAO

AERODROME ELEV. 22 FT  
HEIGHTS RELATED TO  
THR RWY 31 ELEV. 22 FT

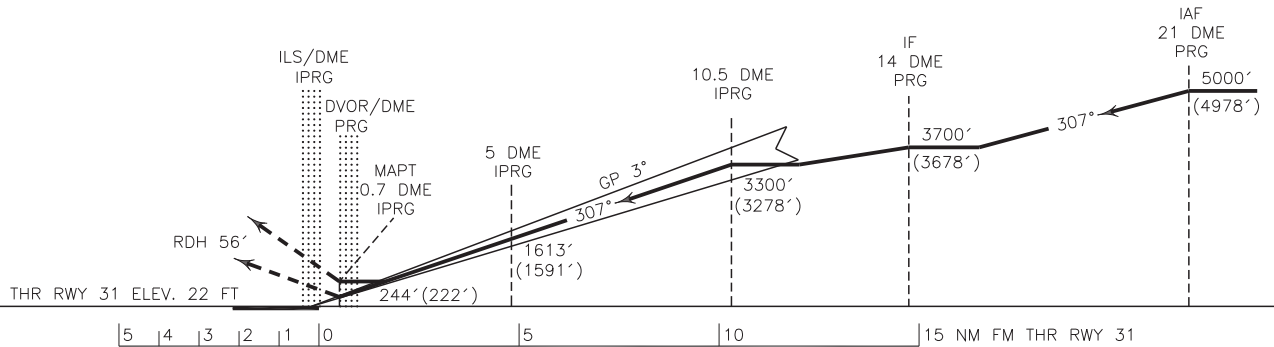
TWR 118.125  
121.725  
ATIS 126.600

ILS Z RWY 31  
CAT A/B/C/D



MISSED APPROACH: At 0.7 DME IPRG climb on RDL 300 to 1300 FT, then turn left to rejoin HDLG at 5000 FT.

TA 7000'



OCA(H)	A	B	C	D
Straight		244' (222')		
GP INOP		600' (578')		
Circling		720' (698')		

NOTE:  
1-Circling not authorized north of AD.  
2-Contour intervals are to be selected at 990 FT (300 M).