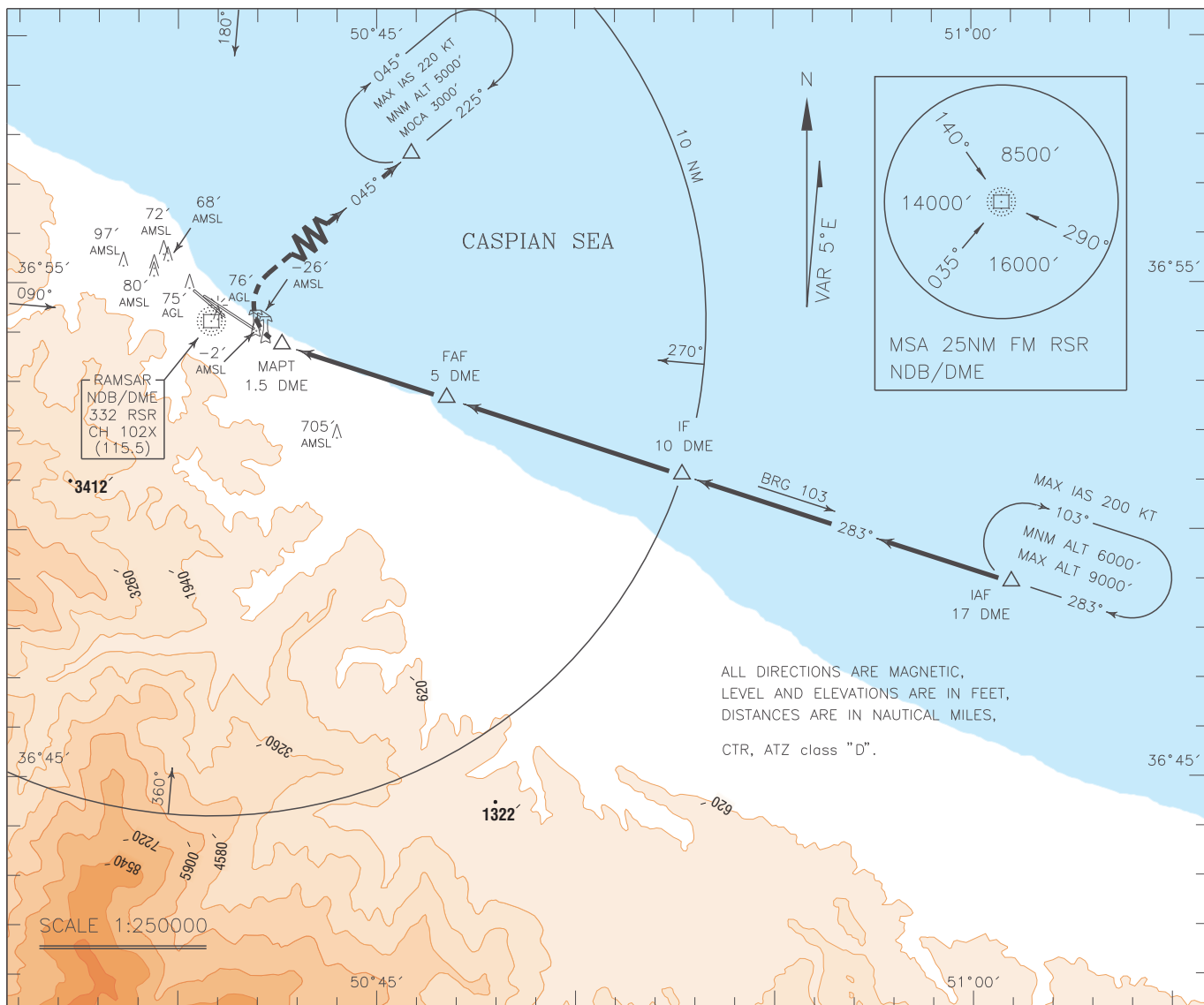


INSTRUMENT  
APPROACH  
CHART-ICAO

AERODROME ELEV. -66 FT  
HEIGHTS RELATED TO  
AERODROME ELEVATION

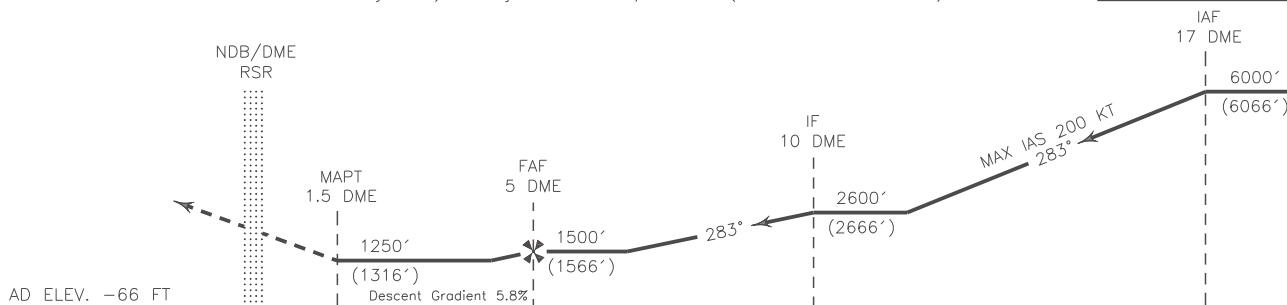
TWR 122.900  
121.900

RAMSAR  
NDB/DME 1 RWY 30  
CAT A/B/C



MISSED APPROACH: At 1.5 DME turn right to establish BRG 045° climb to 3000 FT (Expect 5000 FT by ATC) and join IAF NDB/DME 2 (BRG 045 -10 DME).

TA 16000'



NOTE:

- 1- Circling not authorized west and south of AD.
- 2- HLDG penetrates in NSR CTR.
- 3- In case of missed approach leave IAF at 3000 FT.
- 4- Contour intervals are to be selected at 1320 FT (400 M).

OCA(H)	A	B	C	D
Straight		1250' (1316')		
Circling		1450' (1516')		