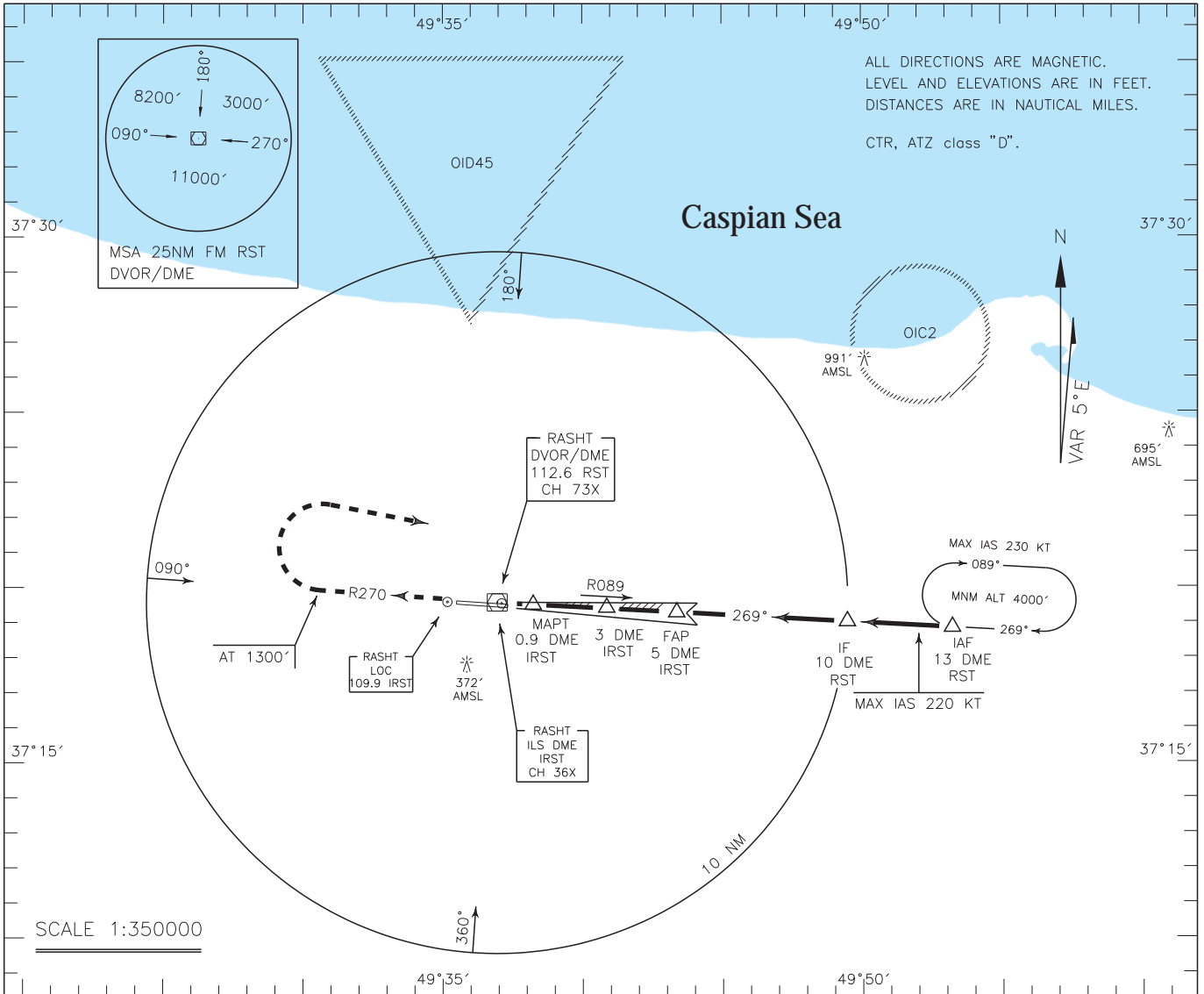


INSTRUMENT
APPROACH
CHART-ICAO

AERODROME ELEV. -37 FT
HEIGHTS RELATED TO
THR RWY 27 ELEV. -37 FT

TWR 122.700, 121.900
ATIS 126.200

RASHT/SARDAR-E-JANGAL
ILS Z RWY 27
CAT A/B/C/D

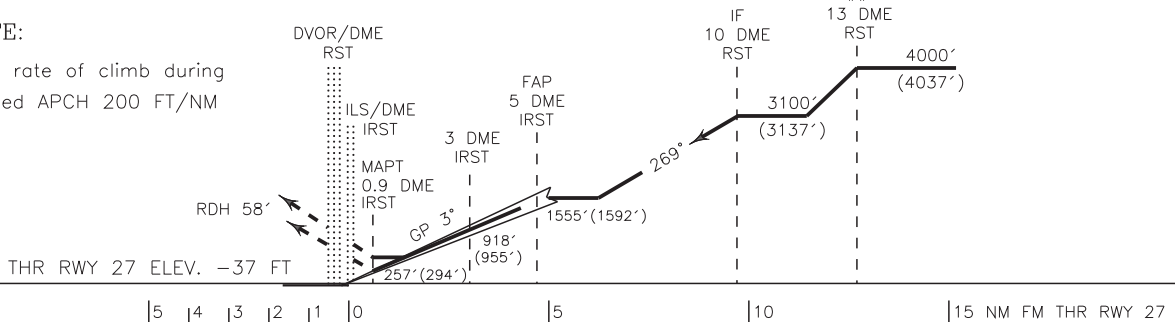


MISSED APPROACH: At 0.9 DME IRST climb on MAG TR 270° to DVOR/DME and intercept RDL 270 to 1300 FT, then turn right to rejoin HLDG.

TA 4000'

NOTE:

MNM rate of climb during missed APCH 200 FT/NM



OCA(H)	A	B	C	D
Straight	257' (294')			
GP INOP	450' (487')			
Circling	470' (507')	570' (607')	660' (697')	

NOTE:

Circling not authorized south of AD.