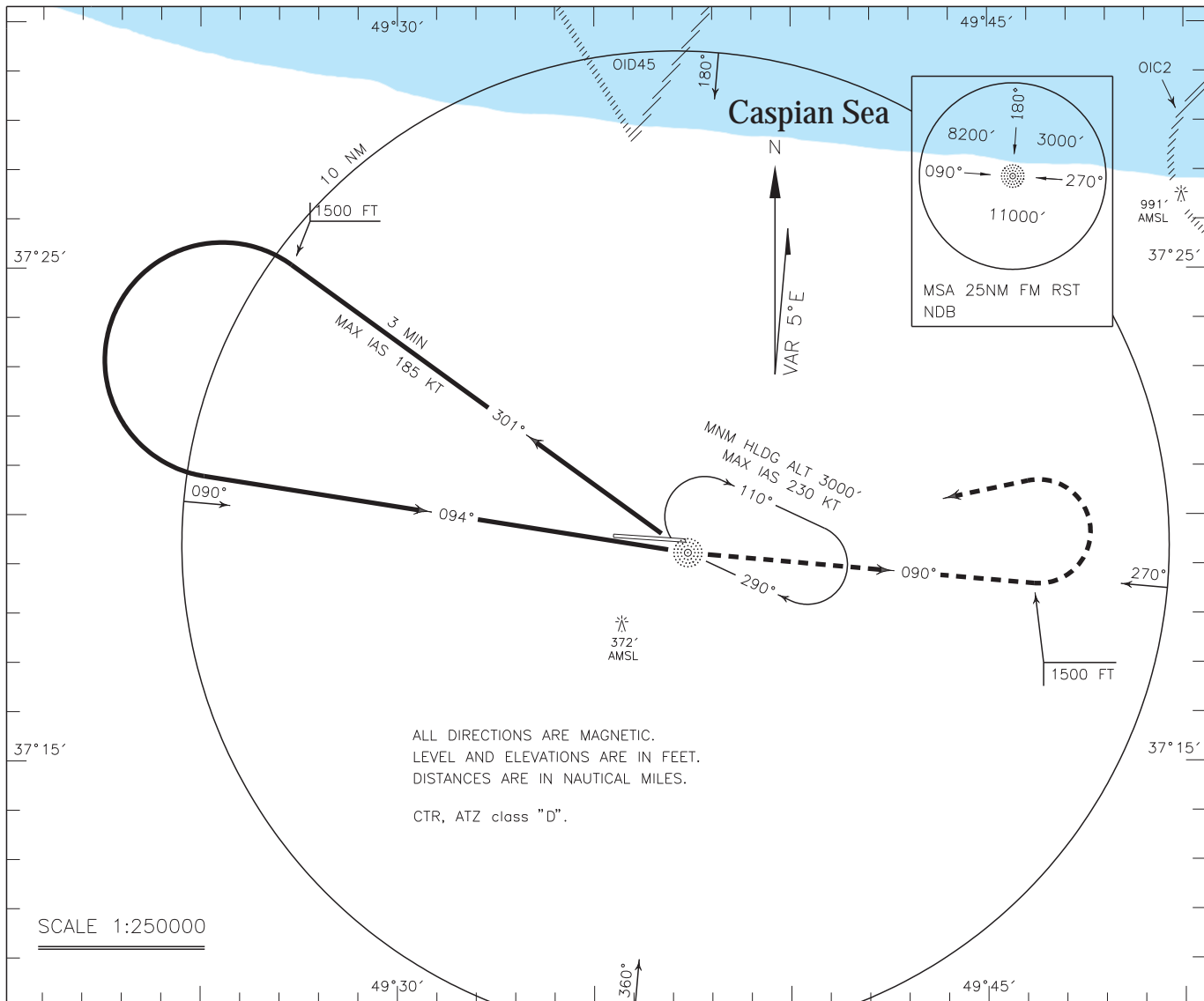


INSTRUMENT
APPROACH
CHART-ICAO

AERODROME ELEV. -37 FT
HEIGHTS RELATED TO
THR RWY 09 ELEV. -51 FT

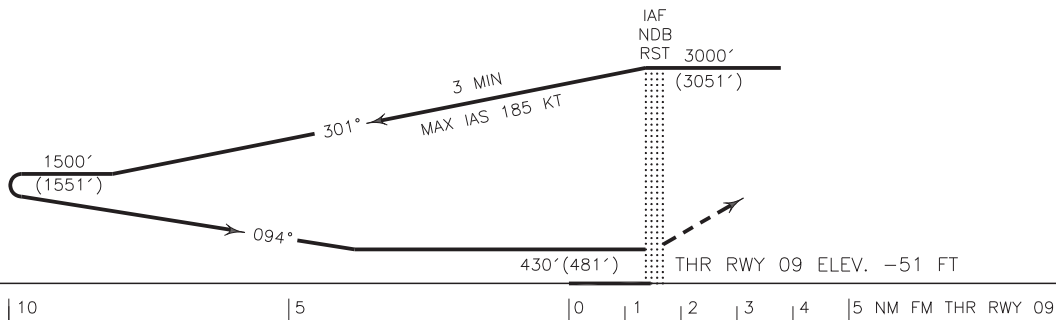
TWR 122.700, 121.900
ATIS 126.200

RASHT/SARDAR-E-JANGAL
NDB RWY 09
CAT C/D



MISSED APPROACH: Over NDB climb on BRG 090° to 1500 FT, then turn left to rejoin HLDG at 3000 FT.

TA 4000'



NOTE:
Circling not authorized south of AD.

OCA(H)	A	B	C	D
Straight			430' (481')	
Circling			700' (737')	