

STANDARD DEPARTURE CHART-
INSTRUMENT (SID)-ICAO

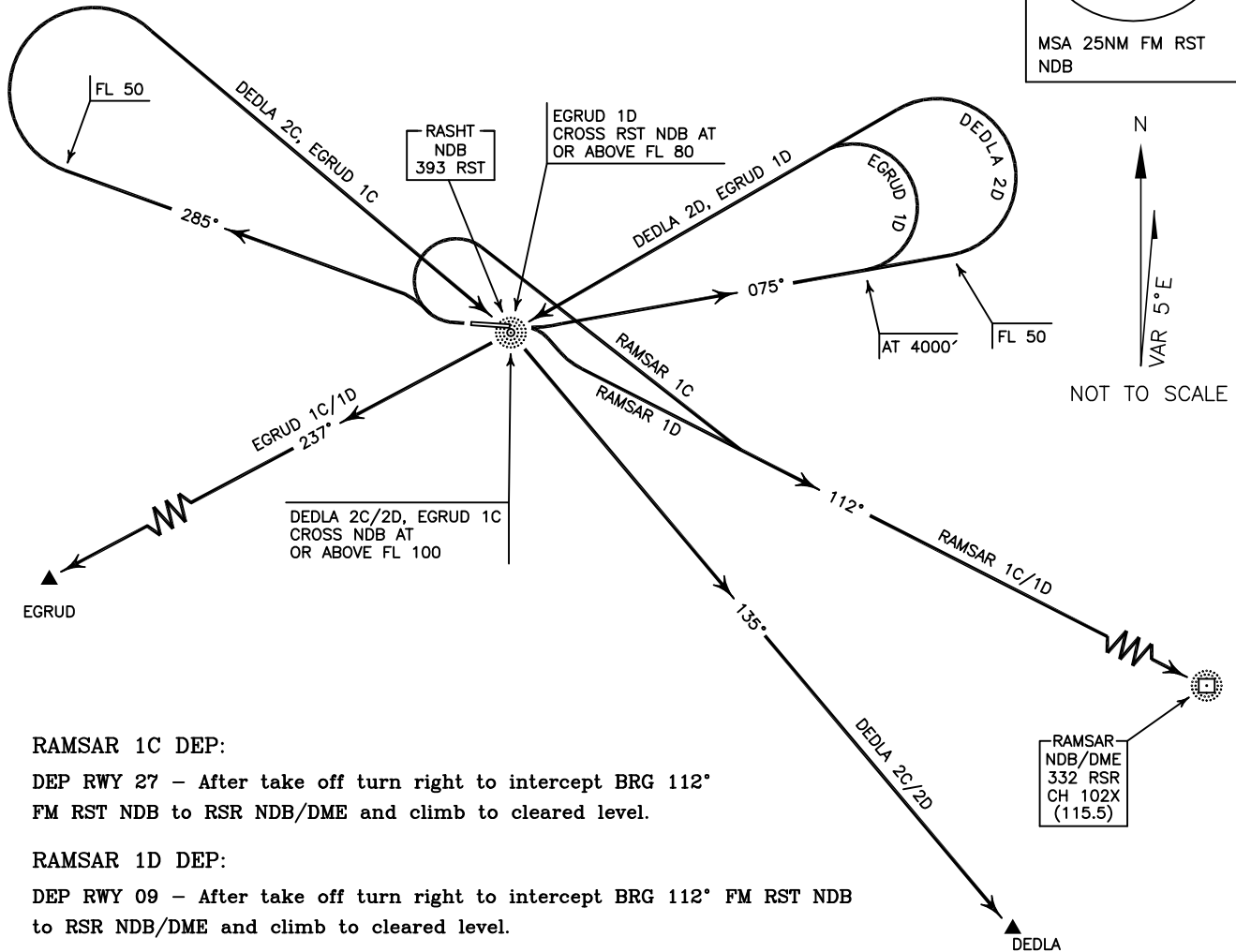
TRANSITION ALTITUDE
4000 FT

TWR 122.700, 121.900
ATIS 126.200

RASHT/SARDAR-E-JANGAL
RWY 09/27
RAMSAR 1C/1D
DEDLA 2C/2D, EGRUD 1C/1D

ALL DIRECTIONS ARE MAGNETIC,
LEVEL AND ELEVATIONS ARE IN FEET,
DISTANCES ARE IN NAUTICAL MILES.

CTR class "D".



RAMSAR 1C DEP:

DEP RWY 27 - After take off turn right to intercept BRG 112° FM RST NDB to RSR NDB/DME and climb to cleared level.

RAMSAR 1D DEP:

DEP RWY 09 - After take off turn right to intercept BRG 112° FM RST NDB to RSR NDB/DME and climb to cleared level.

DEDLA 2C DEP:

DEP RWY 27 - After take off turn right climb on BRG 285° to FL 50, then turn right to cross overhead RST NDB at or above FL 100, then intercept BRG 135° to DEDLA and climb to cleared level. MNM rate of climb 300 FT/NM.

DEDLA 2D DEP:

DEP RWY 09 - After take off turn left climb on BRG 075° to FL 50, then turn left to cross overhead RST NDB at or above FL 100, then intercept BRG 135° to DEDLA and climb to cleared level. MNM rate of climb 300 FT/NM.

EGRUD 1C DEP:

DEP RWY 27 - After take off turn right climb on BRG 285° to FL 50, then turn right to cross overhead RST NDB at or above FL 100, then turn right intercept BRG 237° to EGRUD and climb to cleared level. MNM rate of climb 260 FT/NM up to overhead RST NDB.

EGRUD 1D DEP:

DEP RWY 09 - After take off turn left climb on BRG 075° to 4000 FT, then turn left to cross overhead RST NDB at or above FL 80, then intercept BRG 237° to EGRUD and climb to cleared level.