

STANDARD DEPARTURE CHART-  
INSTRUMENT (SID)-ICAO

TRANSITION ALTITUDE  
4000 FT

TWR 122.700, 121.900  
ATIS 126.200

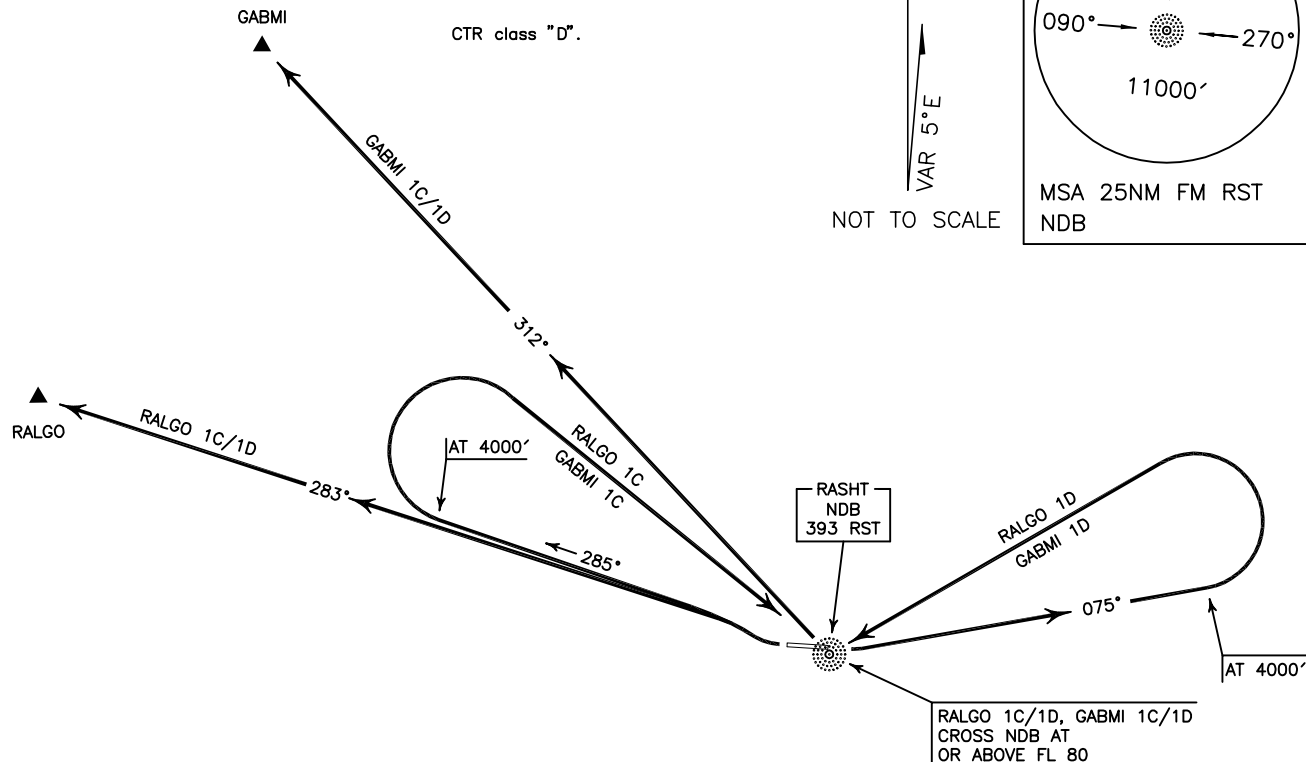
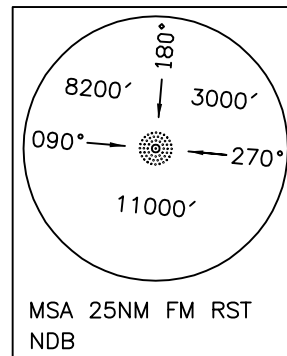
RASHT/SARDAR-E-JANGAL  
RWY 09/27  
RALGO 1C/1D  
GABMI 1C/1D

ALL DIRECTIONS ARE MAGNETIC,  
LEVEL AND ELEVATIONS ARE IN FEET,  
DISTANCES ARE IN NAUTICAL MILES.

CTR class "D".



NOT TO SCALE



**RALGO 1C DEP:**

DEP RWY 27- After take off turn right climb on BRG 285° to 4000 FT, then turn right to cross overhead RST NDB at or above FL 80, then intercept BRG 283° to RALGO and climb to cleared level. MNM rate of climb 300 FT/NM.

**RALGO 1D DEP:**

DEP RWY 09- After take off turn left climb on BRG 075° to 4000 FT, then turn left to cross overhead RST NDB at or above FL 80, then intercept BRG 283° to RALGO and climb to cleared level. MNM rate of climb 300 FT/NM.

**GABMI 1C DEP:**

DEP RWY 27- After take off turn right climb on BRG 285° to 4000 FT, then turn right to cross overhead RST NDB at or above FL 80, then intercept BRG 312° to GABMI and climb to cleared level. MNM rate of climb 300 FT/NM.

**GABMI 1D DEP:**

DEP RWY 09- After take off turn left climb on BRG 075° to 4000 FT, then turn left to cross overhead RST NDB at or above FL 80, then intercept BRG 312° to GABMI and climb to cleared level. MNM rate of climb 300 FT/NM.