

STANDARD ARRIVAL CHART-  
INSTRUMENT (STAR)-ICAO

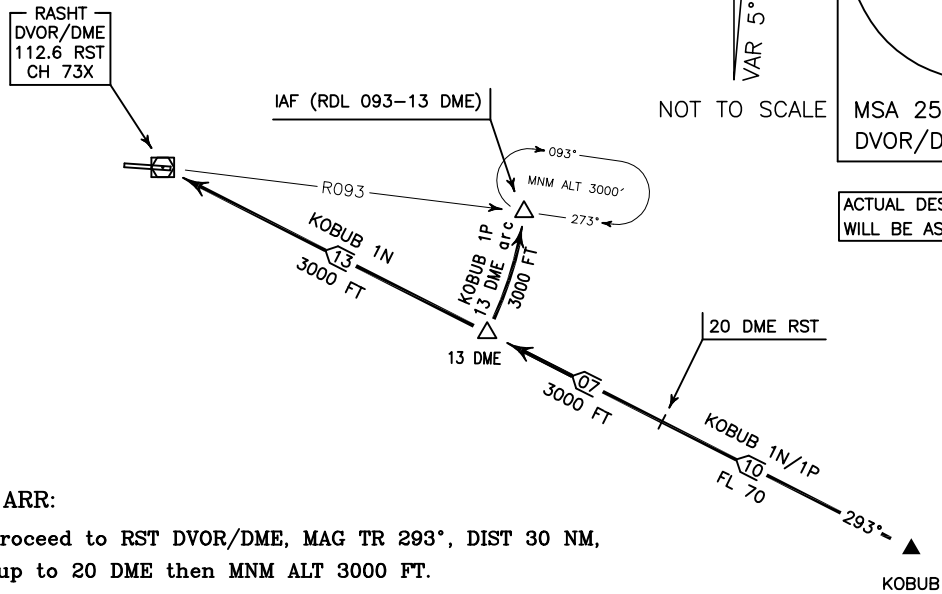
TRANSITION ALTITUDE  
4000 FT

TWR 122.700, 121.900  
ATIS 126.200

RASHT/SARDAR-E-JANGAL  
RWY 09/27  
KOBUB 1N/1P/1Q

ALL DIRECTIONS ARE MAGNETIC,  
LEVEL AND ELEVATIONS ARE IN FEET,  
DISTANCES ARE IN NAUTICAL MILES.

CTR class "D".

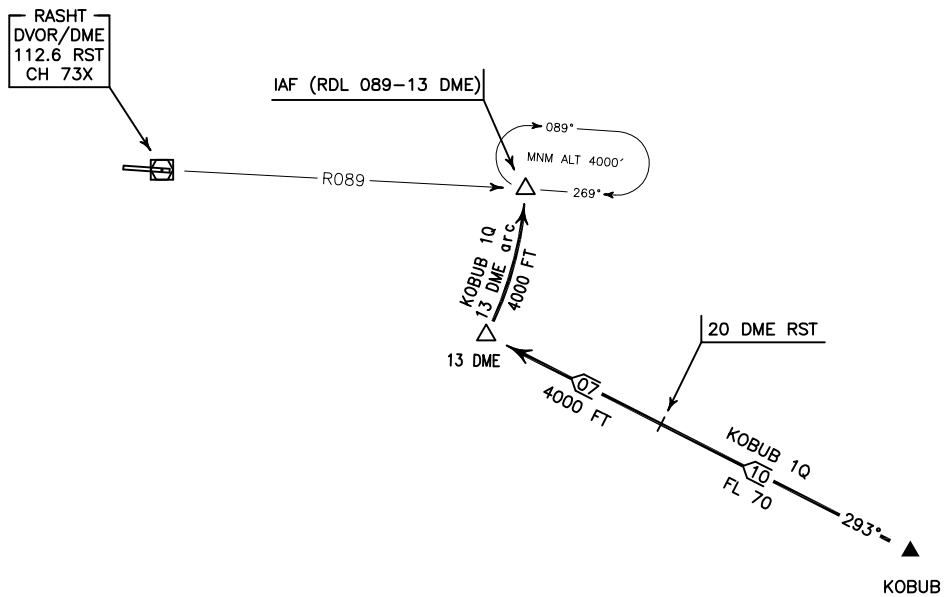


**KOBUB 1N ARR:**

FM KOBUB proceed to RST DVOR/DME, MAG TR 293°, DIST 30 NM,  
MNM FL 70 up to 20 DME then MNM ALT 3000 FT.

**KOBUB 1P ARR:**

FM KOBUB proceed to IAF (RDL 093-13 DME), MAG TR 293°, MNM FL 70 up to  
20 DME then MNM ALT 3000 FT. at 13 DME turn right for 13 DME arc to IAF.



**KOBUB 1Q ARR:**

FM KOBUB proceed to IAF (RDL 089-13 DME), MAG TR 293°, MNM FL 70 up to 20 DME then MNM ALT 4000 FT  
at 13 DME turn right for 13 DME arc to IAF,