

STANDARD ARRIVAL CHART-  
INSTRUMENT (STAR)-ICAO

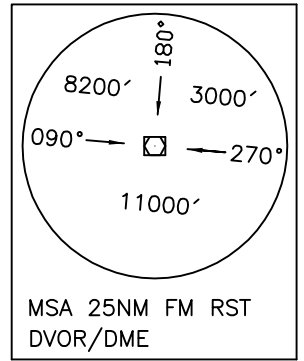
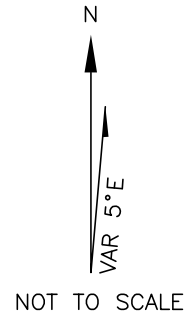
TRANSITION ALTITUDE  
4000 FT

TWR 122.700, 121.900  
ATIS 126.200

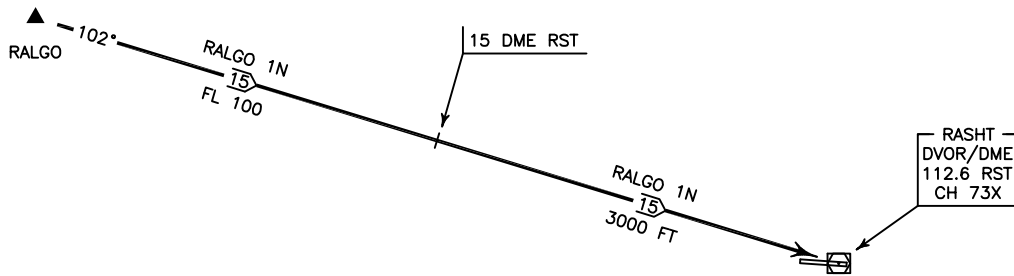
RASHT/SARDAR-E-JANGAL  
RWY 09/27  
RALGO 1N/1P

ALL DIRECTIONS ARE MAGNETIC,  
LEVEL AND ELEVATIONS ARE IN FEET,  
DISTANCES ARE IN NAUTICAL MILES.

CTR class "D".

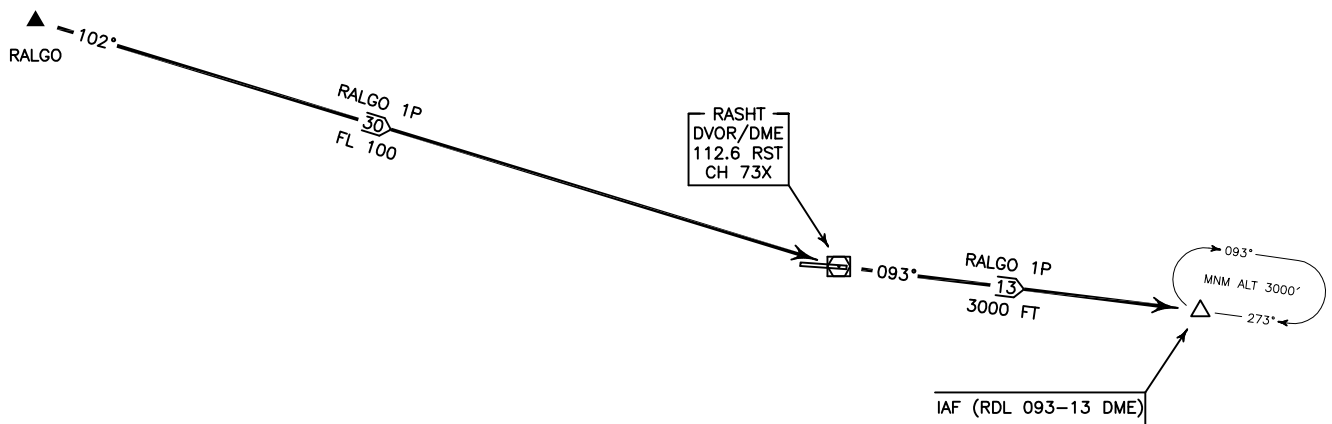


ACTUAL DESCENT CLEARANCE  
WILL BE AS DIRECTED BY ATC.



**RALGO 1N ARR:**

FM RALGO proceed to RST DVOR/DME, MAG TR 102°, DIST 30 NM, MNM FL 100 up to 15 DME, then MNM ALT 3000 FT.



**RALGO 1P ARR:**

FM RALGO proceed to IAF (RDL 093-13 DME) via overhead RST DVOR/DME, MAG TR 102° up to overhead, DIST 30 NM, MNM FL 100, then MAG TR 093° to IAF, DIST 13 NM, MNM ALT 3000 FT.