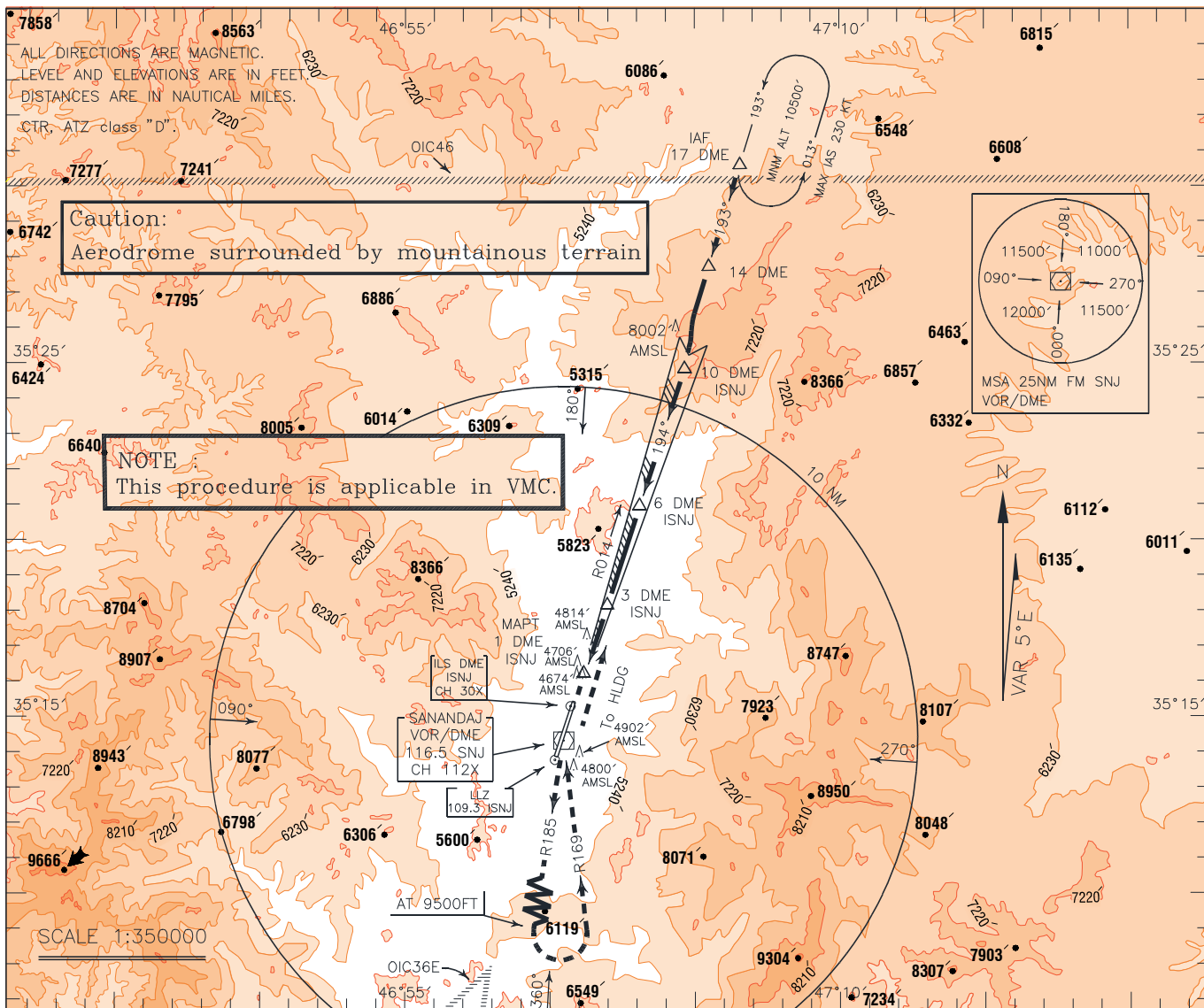


INSTRUMENT  
APPROACH  
CHART-ICAO

AERODROME ELEV. 4528 FT  
HEIGHTS RELATED TO  
THR RWY 19 ELEV. 4528 FT

TWR 122.900, 121.900  
ATIS 128.450

SANANDAJ  
ILS RWY 19  
CAT A/B/C

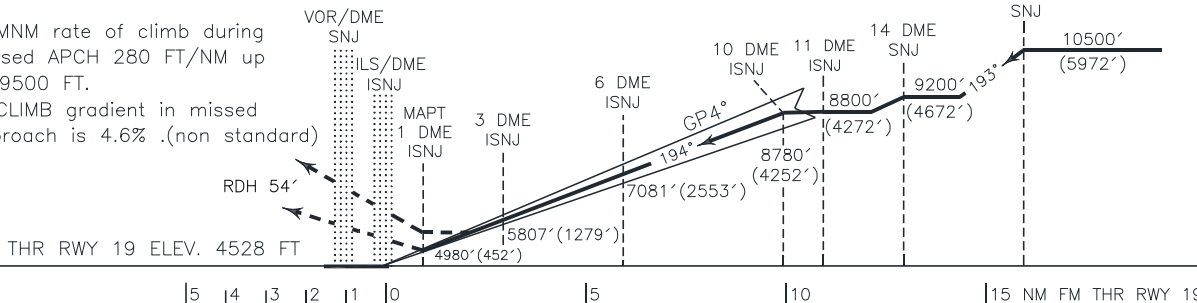


**MISSED APPROACH:** At 1 DME climb straight ahead to VOR/DME, then climb on RDL 185 to 9500 FT, then turn left to establish RDL 169 to overhead VOR/DME, then establish RDL 013 to rejoin HLDG at 10500 FT.

**NOTE:**

1-MNM rate of climb during missed APCH 280 FT/NM up to 9500 FT.

2-CLIMB gradient in missed approach is 4.6% (non standard)



OCA(H)	A	B	C	D
Straight		4980'(452')		
GP INOP		5580'(1052')		
Circling	5960'(1432')	6860'(2332')	8120'(3592')	

**NOTE:**

- 1-Glide path angle is 4°(non standard).
- 2-Contour intervals are to be selected at 990 FT (300 M).