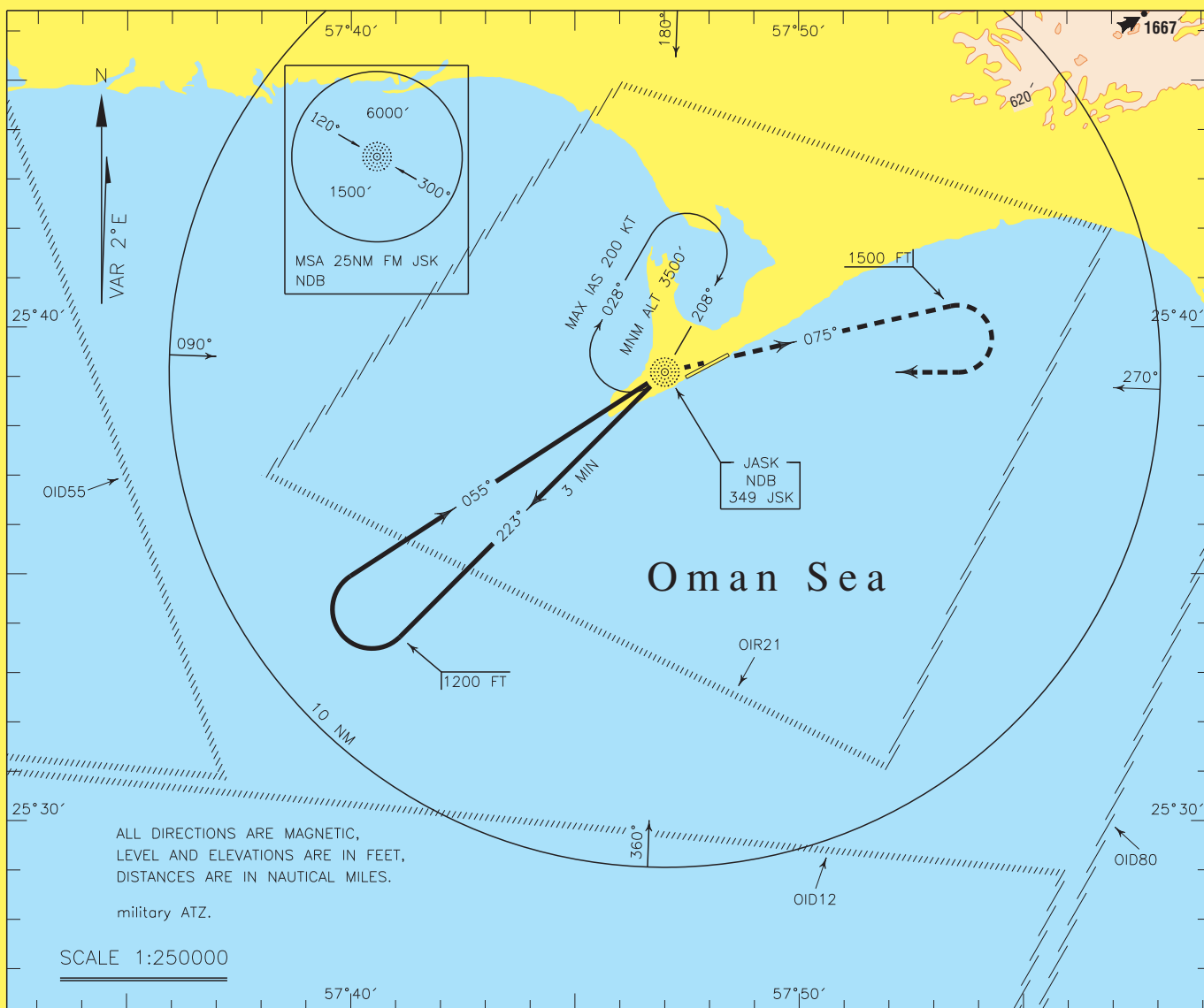


INSTRUMENT
APPROACH
CHART-ICAO

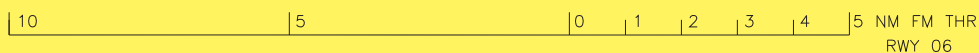
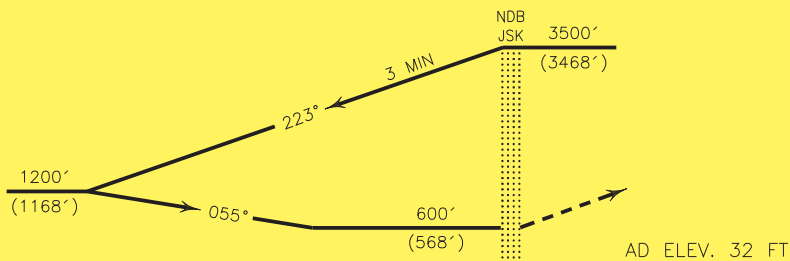
AERODROME ELEV. 32 FT
HEIGHTS RELATED TO
AERODROME ELEVATION

JASK
NDB RWY 06
CAT A/B



MISSED APPROACH: Over JSK NDB climb on BRG 075° to 1500 FT, then turn right to rejoin
HLDG at 3500 FT.

TA 4000'



| OCA(H) | A | B | C | D |
|----------|-------------|---|---|---|
| Straight | 600' (568') | | | |
| Circling | 740' (708') | | | |

NOTE:
Contour intervals are to be selected
at 990 FT (300 M).