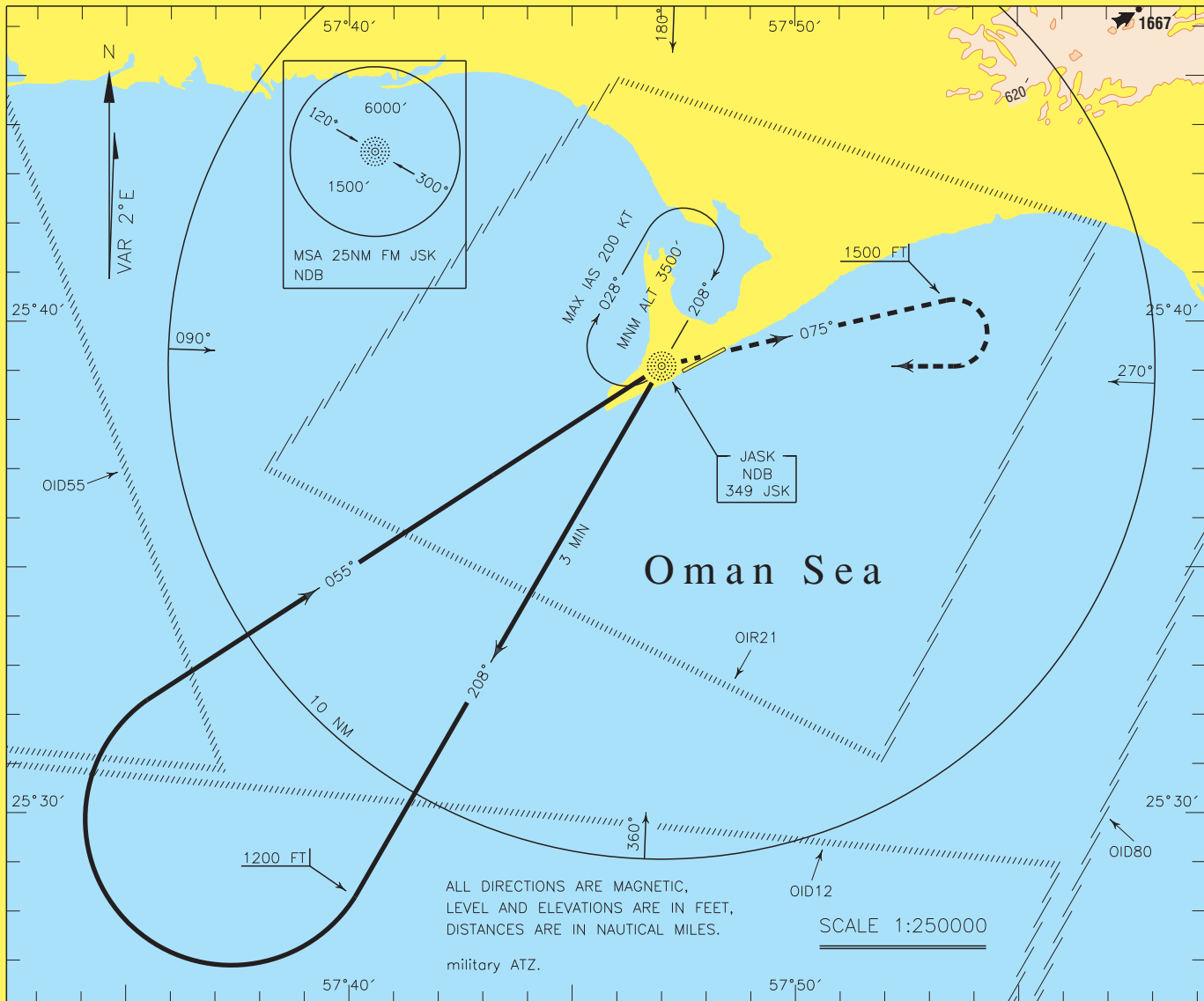


INSTRUMENT
APPROACH
CHART-ICAO

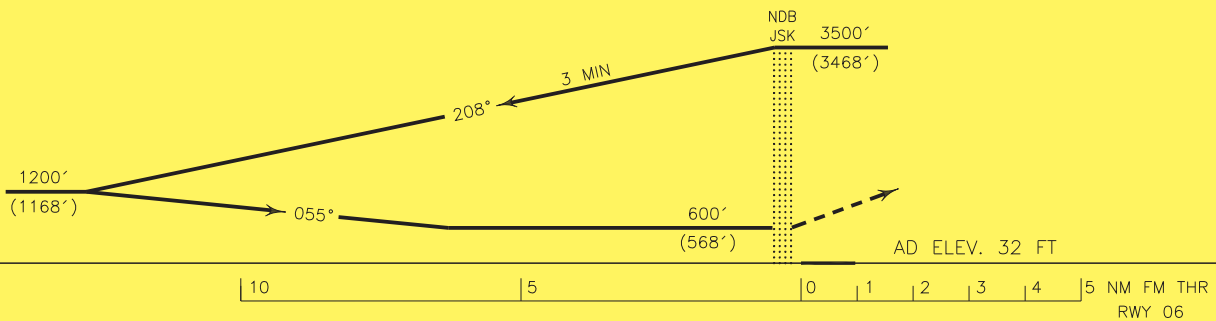
AERODROME ELEV. 32 FT
HEIGHTS RELATED TO
AERODROME ELEVATION

JASK
NDB RWY 06
CAT C



MISSED APPROACH: Over JSK NDB climb on BRG 075° to 1500 FT, then turn right to rejoin HLDG at 3500 FT.

TA 4000'



OCA(H)	A	B	C	D
Straight			600' (568')	
Circling			840' (808')	

NOTE:
Contour intervals are to be selected at 990 FT (300 M).