

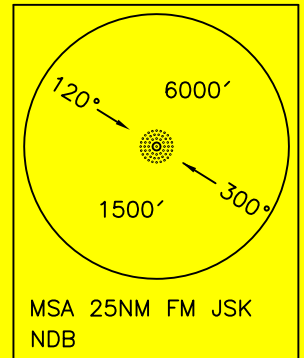
STANDARD DEPARTURE CHART-
INSTRUMENT (SID)-ICAO

TRANSITION ALTITUDE
4000 FT

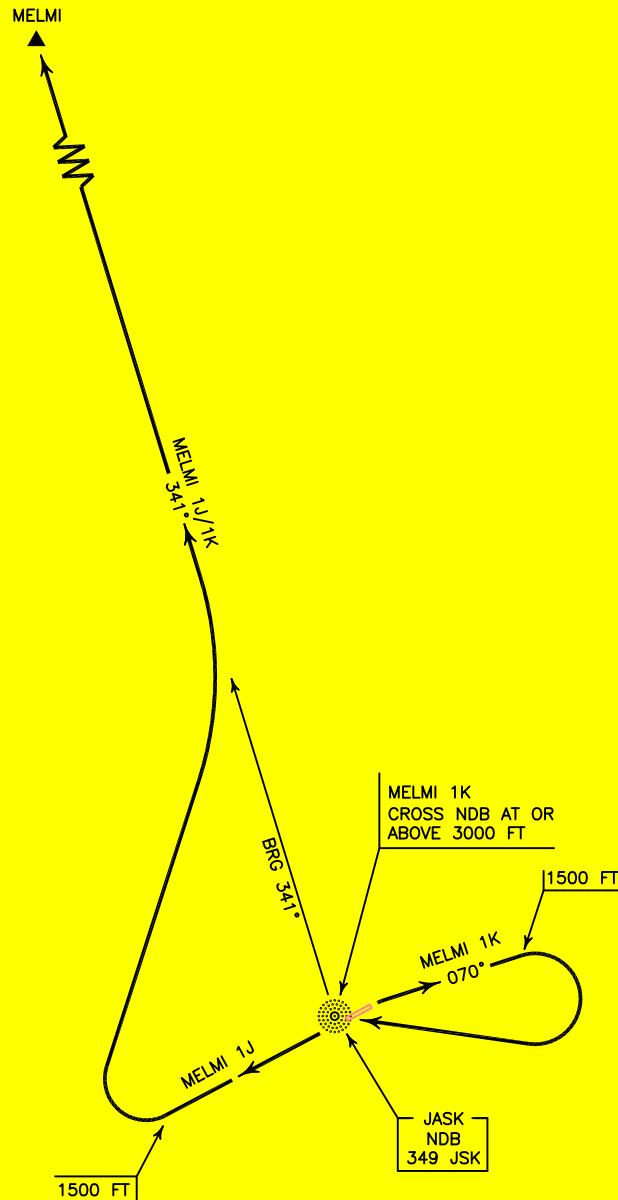
JASK
RWY 06/24
MELMI 1J/1K

ALL DIRECTIONS ARE MAGNETIC,
LEVEL AND ELEVATIONS ARE IN FEET,
DISTANCES ARE IN NAUTICAL MILES.

military ATZ.



NOT TO SCALE



MELMI 1J DEP:

DEP RWY 24 - After take off climb on RWY heading to 1500 FT, then turn right to establish BRG 341° to MELMI and climb to cleared level.

Note: This procedure penetrate within C43.

MELMI 1k DEP:

DEP RWY 06 - After take off climb on BRG 070° to 1500 FT, then turn right to cross overhead JSK NDB at or above 3000 FT, then establish BRG 341° to MELMI and climb to cleared level.

Note: This procedure penetrate within C43.