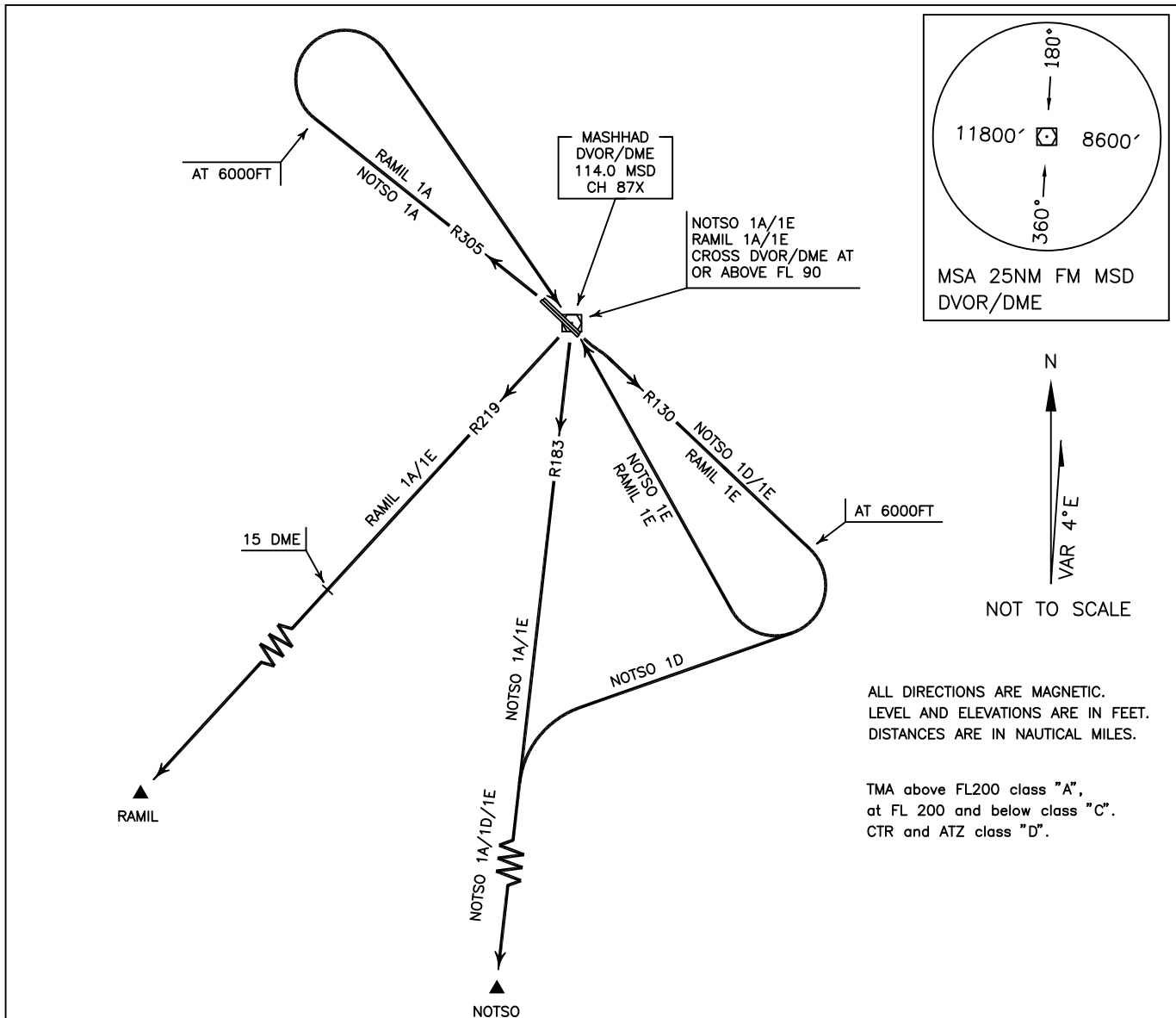


STANDARD DEPARTURE CHART—
INSTRUMENT (SID)—ICAO

TRANSITION ALTITUDE
8000 FT

APP	127.300
RADAR	127.300
TWR	118.100, 121.900
GND	121.700
ATIS	126.400

MASHHAD/
SHAHID HASHEMI NEJAD
RWY 13L/R, 31R/L
NOTSO 1A/1D/1E, RAMIL 1A/1E



ALL DIRECTIONS ARE MAGNETIC.
LEVEL AND ELEVATIONS ARE IN FEET.
DISTANCES ARE IN NAUTICAL MILES.

TMA above FL200 class "A",
at FL 200 and below class "C".
CTR and ATZ class "D".

NOTSO 1A DEP:

DEP RWY 31R/L - After take off climb on RDL 305 to 6000 FT, then turn right to cross overhead MSD DVOR/DME at or above FL 90, then intercept RDL 183 to NOTSO and climb to cleared level.

NOTSO 1D DEP:

DEP RWY 13L/R - After take off climb on RDL 130 to 6000 FT, then turn right to intercept RDL 183 to NOTSO and climb to cleared level.

MNM rate of climb 300 FT/NM up to 8000 FT.

NOTSO 1E DEP:

DEP RWY 13L/R - After take off climb on RDL 130 to 6000 FT, then turn right to cross overhead MSD DVOR/DME at or above FL 90, then intercept RDL 183 to NOTSO and climb to cleared level.

RAMIL 1A DEP:

DEP RWY 31L/R - After take off climb on RDL 305 to 6000 FT, then turn right to cross overhead MSD DVOR/DME at or above FL 90, then intercept RDL 219 to RAMIL and climb to cleared level.

RAMIL 1E DEP:

DEP RWY 13L/R - After take off climb on RDL 130 to 6000 FT, then turn right to cross overhead MSD DVOR/DME at or above FL 90, then intercept RDL 219 to RAMIL and climb to cleared level.