

STANDARD DEPARTURE CHART-
INSTRUMENT (SID)-ICAO

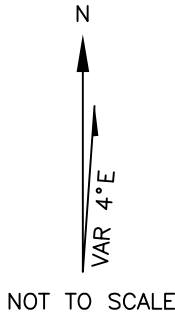
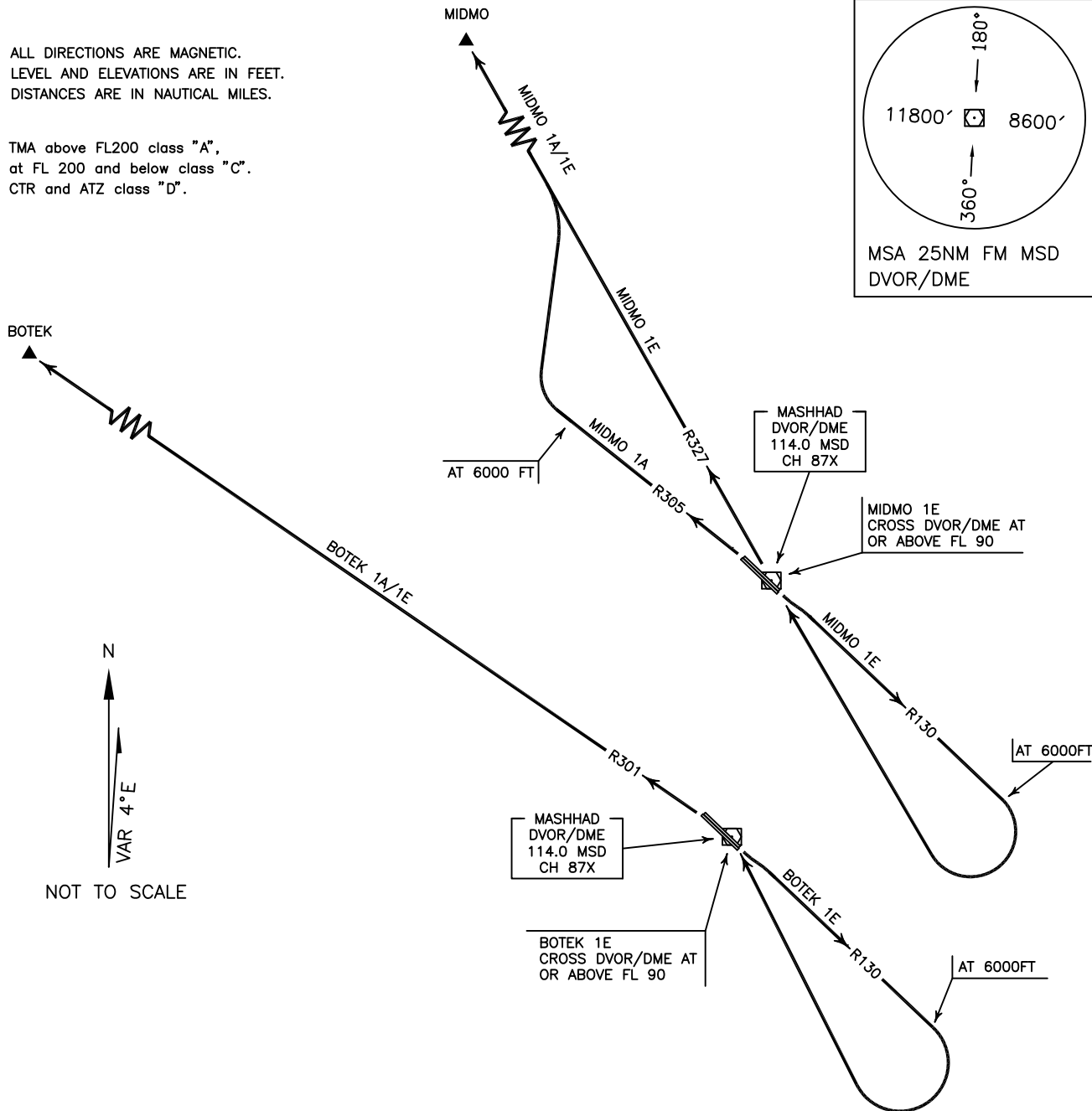
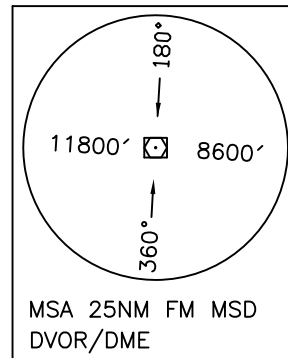
TRANSITION ALTITUDE
8000 FT

APP	127.300
RADAR	127.300
TWR	118.100, 121.900
GND	121.700
ATIS	126.400

MASHHAD/
SHAHID HASHEMI NEJAD
RWY 13L/R, 31R/L
BOTEK 1A/1E, MIDMO 1A/1E

ALL DIRECTIONS ARE MAGNETIC.
LEVEL AND ELEVATIONS ARE IN FEET.
DISTANCES ARE IN NAUTICAL MILES.

TMA above FL200 class "A",
at FL 200 and below class "C".
CTR and ATZ class "D".



BOTEK 1A DEP:

DEP RWY 31R/L - After take off climb on RDL 301 to BOTEK and climb to cleared level. MNM ROC 220 FT/NM.

BOTEK 1E DEP:

DEP RWY 13R/L - After take off climb on RDL 130 to 6000 FT, then turn right to cross overhead DVOR/DME at or above FL 90, then intercept RDL 301 to BOTEK and climb to cleared level.

MIDMO 1A DEP:

DEP RWY 31R/L - After take off climb on RDL 305 to 6000 FT, then turn right to intercept RDL 327 to cross MIDMO at or above FL 160.

MIDMO 1E DEP:

DEP RWY 13R/L - After take off climb on RDL 130 to 6000 FT, then turn right to cross overhead MSD DVOR/DME at or above FL 90, then intercept RDL 327 to MIDMO and climb to cleared level.