

STANDARD DEPARTURE CHART—
INSTRUMENT (SID)—ICAO

TRANSITION ALTITUDE
8000 FT

APP	127.300
RADAR	127.300
TWR	118.100, 121.900
GND	121.700
ATIS	126.400

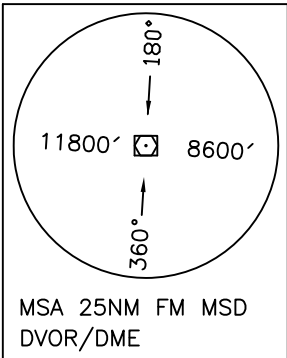
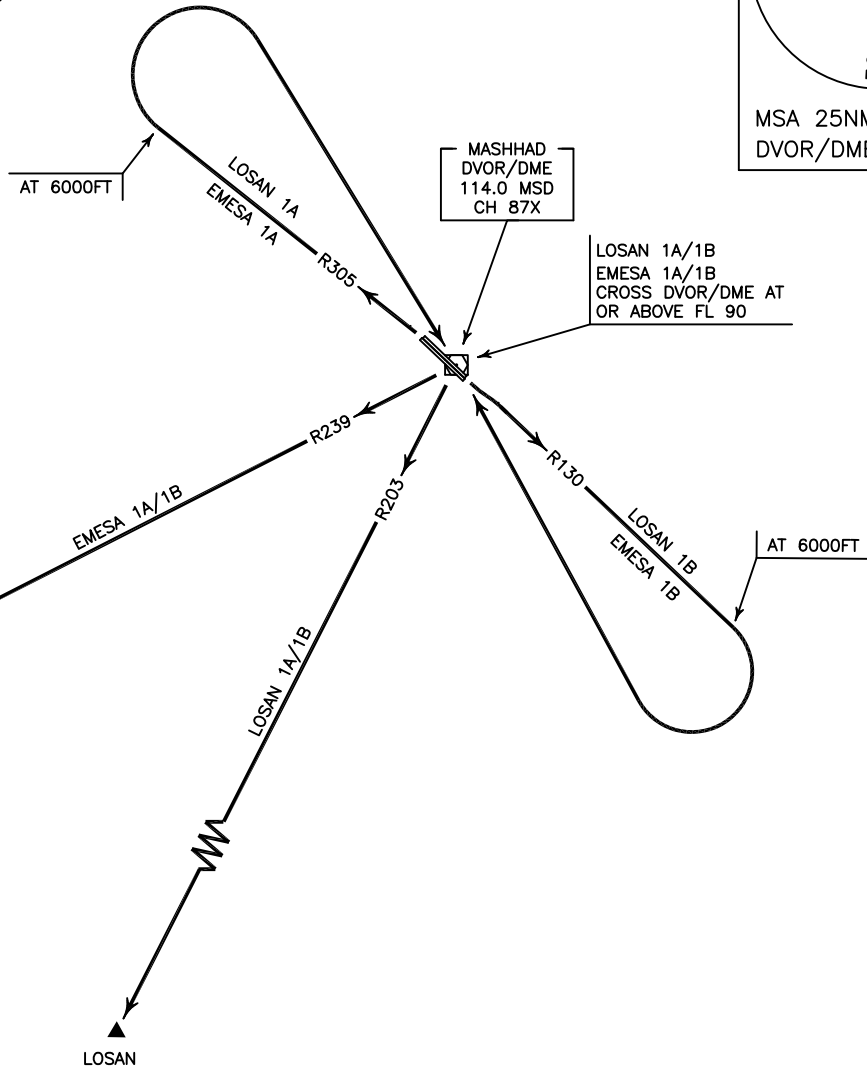
MASHHAD/
SHAHID HASHEMI NEJAD
RWY 13L/R, 31R/L
LOSAN 1A/1B, EMESA 1A/1B

ALL DIRECTIONS ARE MAGNETIC.
LEVEL AND ELEVATIONS ARE IN FEET.
DISTANCES ARE IN NAUTICAL MILES.

TMA above FL200 class "A",
at FL 200 and below class "C".
CTR and ATZ class "D".



NOT TO SCALE



LOSAN 1A DEP:

DEP RWY 31R/L - After take off climb on RDL 305 to 6000 FT, then turn right to cross overhead MSD DVOR/DME at or above FL 090, then intercept RDL 203 to LOSAN and climb to cleared level.

LOSAN 1B DEP:

DEP RWY 13R/L - After take off climb on RDL 130 to 6000 FT, then turn right to cross overhead MSD DVOR/DME at or above FL 090, then intercept RDL 203 to LOSAN and climb to cleared level.

EMESA 1A DEP:

DEP RWY 31R/L - After take off climb on RDL 305 to 6000 FT, then turn right to cross overhead MSD DVOR/DME at or above FL 090, then intercept RDL 239 to EMESA and climb to cleared level.

EMESA 1B DEP:

DEP RWY 13R/L - After take off climb on RDL 130 to 6000 FT, then turn right to cross overhead MSD DVOR/DME at or above FL 090, then intercept RDL 239 to EMESA and climb to cleared level.